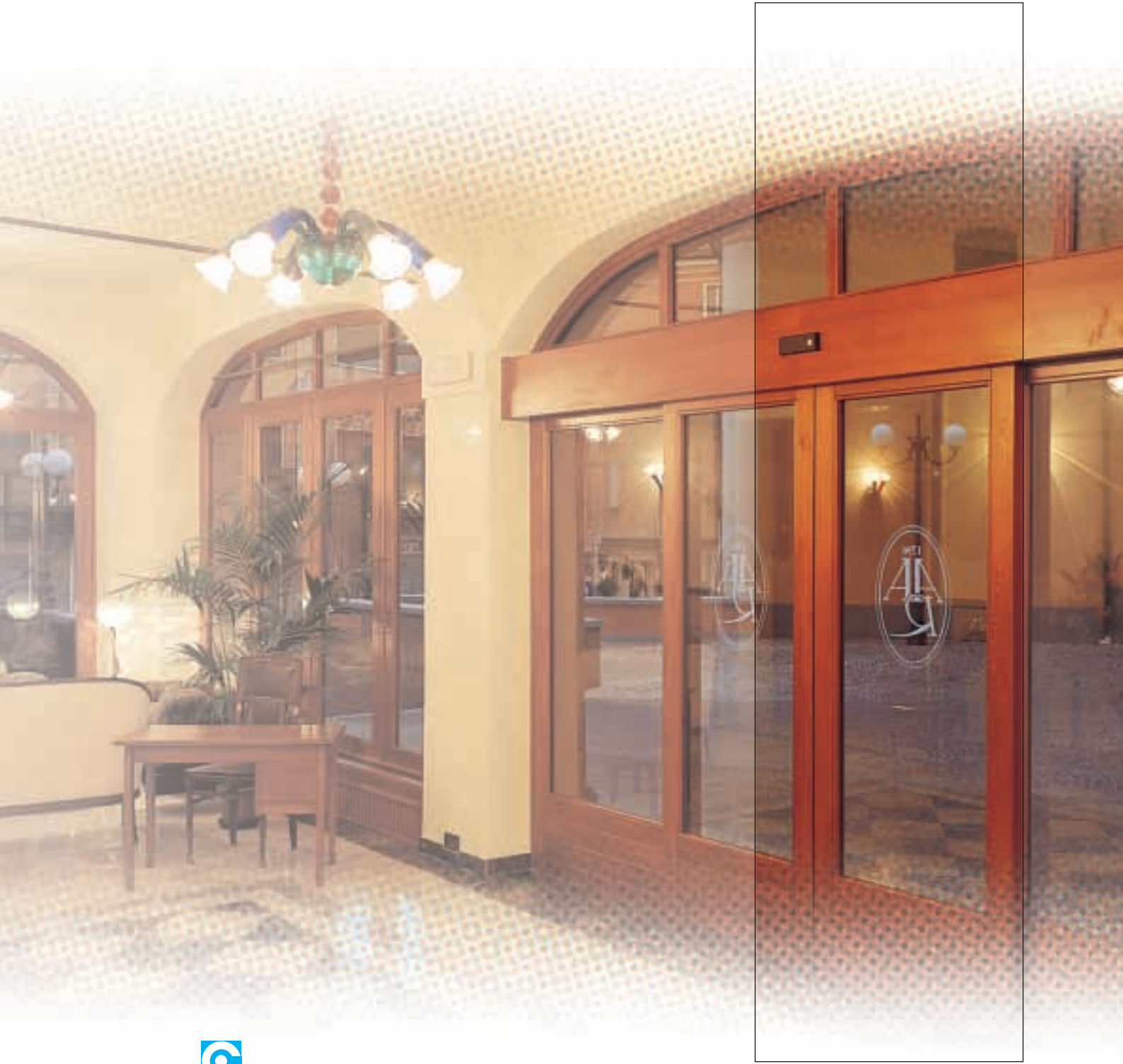



Uniclass L4181	EPIC D181
C1/SfB  (31.59)  X	
JANUARY 2004	

# Coburn Automatic Operators



  
**COBURN**  
SLIDING SYSTEMS

# Coburn

## Automatic Operators

**This comprehensive range of COBURN Automatic Door Operators offers simple, cost-effective solutions for specifiers and contractors looking for ways to automate interior doors. Although developed to provide ease of access for wheelchair users the range offers products for residential and commercial sliding and hinged doors that can be used on all types of projects.**

This unique range has been specially created to allow simple installation by any qualified electrician although installation can be arranged if preferred. With the requirements for improved access for the physically disabled, COBURN Automatic Door Operators allow ease of operation through a variety of opening alternatives. Pushbutton panels, PIR sensors, floor mats and self-programming transmitter/receivers are all options to suit the degree of sophistication required.

Where a sliding operation is required three alternatives are available. The S40 and S100 come as complete kits for simplicity of installation. Optional clip-on covers provide a modern finishing touch. The COBURN COMPACT Automatic Operator is ideal for automating residential or light use doors where continuous use is not required, and is particularly appropriate when retro-fitting to an existing door.

For hinged doors three operators are offered, the H80 for doors up to 80kg and, for doors subject to constant use, the H100 and the H150. With options of a Low Energy mode or Push and Go function the H80 is at the leading edge of electronic door control technology. The H150 offers most of the same facilities and is the top of the range in spring-operated door closers. The H100 offers a basic heavy-duty closer at a budget price. Spring-operated closing means that both this model and the H150 are suitable for use on fire doors in hospital wards and wherever there are people with restricted movement.

**2** All COBURN Automatic Operators are available from Architectural Ironmongers and Builders merchants.

## H80, H100 & H150

### Hinged Door Operators

#### HINGED DOOR OPERATORS

##### Features:

- ▶ Microprocessor logic electronic control board
- ▶ Automatic limit switch (with encoder on H80 & H150)
- ▶ Accident-prevention system with anti-crush device
- ▶ Articulated and sliding arm options
- ▶ Full range of accessories available

All COBURN Automatic Operators are available with either a sliding arm (S) or an articulated arm (A). In both cases the operator is fitted above the door. The sliding arm version is fitted where the door opens inwards towards the operator side of the door (pull) and the articulated arm version when the door is pushed away from the operator. The articulated arm should always be used where the recess is in excess of 100mm.

#### H80 HINGED DOOR OPERATOR

The H80 is intended for light service swing door operation for doors up to 80kg. Of truly innovative design it has many features including battery back up in the event of power failure, an easily accessible on/off switch and the ability to select Push and Go or Low Energy operating modes.

The Low Energy facility makes the H80 particularly suitable where disabled access is required and the Dip Switch Push and Go option is ideal when the use of detection devices is not recommended. A particular safety feature on the H80 ensures that if it meets an obstruction on its closing cycle it will immediately re-open before automatically closing slowly whilst 'searching' for the obstruction. On the opening cycle the reverse occurs.

Offering magnificent value for money, the H80 is supplied in a sturdy black ABS case as standard. Other colours are available by negotiation subject to quantities required.



The H80 Hinged door operator

## H100 HINGED DOOR OPERATOR

The H100 is for doors up to 100kg which are subjected to continuous use and is particularly suitable for use in hospitals or public buildings where disabled access is required. Its geared motor with its opening/closing speed adjustment is under constant control with an anti-crush feature for maximum safety. With motor-driven opening and spring-operated closing, the H100 can be used for fire doors and is ideal for installations requiring gentle and easy movement rather than great force.

## H150 HINGED DOOR OPERATOR

The H150 offers a sophisticated version of the H100 and is suitable for doors in continuous use up to 150kg. Quick and easy to mount, the H150 can also be used on fire doors and its built-in 'brain' incorporating an anti-crush feature as standard ensures maximum safety at all times.

The H100 & H150 come in an elegantly designed anodised aluminium case.

	H80	H100	H150
Dimensions (mm)	450x80x90	116x127x560	116x127x560
Maximum weight (with 1000mm wide leaf)	80kg	100kg	150kg (Heavy use) 250kg (Light use)
Operation	Light duty	Continuous duty	Continuous duty
Box/housing	Black ABS	Extruded aluminium with plastic side panels	Extruded aluminium with plastic side panels
Opening system	Motor	Motor	Motor
Closing system	Motor	Spring	Spring
Opening speed	1.5-3 seconds	3-5 seconds	3-5 seconds
Closing speed	Set to about 70% of full opening speed	4-8 seconds (adjustable)	Set to about 70% of full opening speed
Power supply	230v 50Hz	230v 50Hz	230v 50Hz
Power input	0.2A max.	1A max.	1A max.
Motor	12V	24V	24V
Emergency power supply	Built-in	Optional extra	Optional extra
Electric lock power supply	1.2A	1.2A	1.2A
Anti-crush device	Standard	Intrinsic safety thanks to very gentle contact during opening and closing	Standard
Limit-switch system	Standard	During opening	Standard
Adjustments	Automatic closing speed of movement	Automatic closing Opening speed Closing speed	Automatic closing Force adjustment Speed of movement
Power supply for accessories	24V=0.15A max	24V=0.5A max	24V=0.5A max
Controls	Automatic closing, opening, closing safety reverse, stop, reset	Opening	Automatic closing, opening, closing safety reverse, stop, reset
Push & Go	Dip switch selection	Dip switch selection	Dip switch selection
Low energy	Dip switch selection	Yes	No



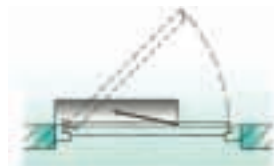
H100 Hinged door operators



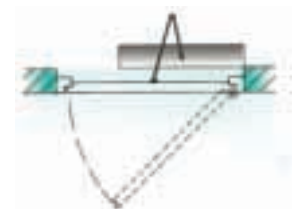
H100 Operator



H80 Operator



H100 Sliding arm (pull)



H100 Articulated arm (push)



H80 Articulated arm (push)



H80 Sliding arm (pull)

# S40 & S100

## Sliding Door Operating Kits

### SLIDING DOOR OPERATING KITS

#### Features:

- ▶ 24Vdc motor
- ▶ Electronic board with microprocessor-controlled logic for the management of all automatic functions
- ▶ Electronic anti-crush device with encoder
- ▶ Smart extruded aluminium track  
(with matching cover option)
- ▶ Quiet, smooth operating hanger assemblies
- ▶ Transmission by toothed belt in resilient synthetic material
- ▶ Full range of accessories available for security and safety (P.I.R.s, photocells, pressure mats, pushbuttons, electronic access control and operating mode selectors etc.)
- ▶ Coupling options for framed and glass doors
- ▶ Photocell complete with amplifier, projector, receiver capable of processing the signals of an additional projector/receiver unit (S100 only)

Please note that additional hangers are required for two-leaf operation.

### S40 SLIDING DOOR OPERATING KIT

The S40 is designed to operate doors of up to 40kg (or two doors up to 30kg per leaf). It has been developed to cater for the growing market for automated lighter use doors in homes, offices, sheltered accommodation, nurseries etc.. Particularly suitable for use where there are people with restricted movement or where home automation is required, the S40 provides pedestrian door automation at a budget price for the first time.

A particular safety feature of the S40 ensures that if it meets an obstruction on its closing cycle it will immediately re-open before automatically closing slowly



#### S40 Technical features

Operation	Light duty
Maximum weight	40 Kgs (1 leaf), 60 Kgs (2 leaves)
Drive	Toothed belt
Speed (1leaf)	0.4 m/s during opening, 0.2 m/s during closing
Power supply	230Vac with 1.5mm cable
Motor	24Vdc with encoder, reversible, without lock
Force	30N
Electronic control board	Built-in, with microprocessor
Behaviour upon obstacle detection	Reversal of movement during closing, and stop during opening
Safety devices	Possibility of connecting photocells with opening function only
Limit switch	Automatic upon obstacle detection
Outputs	24V - max. 0.15A
Controls	Low-voltage, with telephone-type plug-in connectors
Opening	Pushbutton or radar, photocells, etc.
Closing	Pushbutton or timed



S40 Hanger assembly (shown with optional supporting bar)



S40 Drive unit



S40 Kit (shown with optional supporting bar)

# S40 & S100

## Sliding Door Operating Kits

whilst 'searching' for the obstruction. On the opening cycle the reverse occurs. Once it is satisfied that the obstruction has moved the operation returns to normal.

The S40 kit incorporates the COBURN COMPACT operating unit, comes complete with a pushbutton control panel and automatic closing speed adjustment and includes:

- ▶ Track assembly\* in S.A.A. finish with drive unit
- ▶ One hanger set with 1.5m drive belt
- ▶ Automatic Closing Adjuster
- ▶ Pushbutton Panel

\* Available in 2.0m and 3.5m kits for cutting to required width

A range of compatible accessories is also available.

### S100 SLIDING DOOR OPERATING KIT

The S100 is designed for continuous use doors up to 100kg (70kg per leaf where two leaves are required). As with all COBURN Automatic Operators, the S100 is extremely easily installed by any competent electrician. The drive unit and electronic control board have been combined to reduce installation time to a minimum. The standard built-in battery ensures that the automatic system will continue working even in the case of power failure. The S100 includes a photocell (amplifier + projector + receiver) and is designed to allow the mounting of an additional projector/receiver unit if required.

The S100 includes a partial opening feature and a battery fail-safe open/shut facility plus the following components:

- ▶ Track assembly\* in S.A.A. finish with drive unit
- ▶ One hanger set with 1.5m drive belt
- ▶ Automatic Closing Adjuster
- ▶ Pushbutton Panel

\* Available in 2.6m and 4.0m kits for cutting to required width



### S100 Technical features

Operation	Continuous duty
Maximum weight	100 Kgs (1 leaf) - 140 Kgs (2 leaves)
Slide	On reinforced nylon wheels
Drive	Toothed belt in synthetic electroconducting material
Casing profile	Extruded aluminium
Casing profile dimensions (base x height)	100x160 mm
Minimum length	2200 mm
Maximum length	6600 mm
Maximum opening speed	0.5 m/s (1 leaf) - 1.0 m/s (2 leaves) for opening
Closing speed	Set at about 70% of full speed
Approach speed	0.1 m/s
Standard maximum clear opening	3,200mm
Power supply	230Vac/50Hz
Motor	24dc with encoder
Emergency operation	Built-in 24Vdc battery
Maximum absorbed current 230V	1 A
Electronic control board	Microprocessor logic control card with built-in photocell amplifier
Power supply for accessories	24V - max 0.15A
Anticrush device	Electronic with encoder (standard)
Controls	Manual/Automatic. One/two-ways. Door open/closed. Total/partial opening
Settings	Manual and automatic with trimmer and dip switch
Manually adjustable functions	Drive force. Dwell time during opening (0-30). Partial opening
Self-adjusting functions	Maximum opening/closing limits.



S100 Electronic control board



S100 Hanger assembly (shown with optional supporting bar)



S100 Kit (shown with extra leaf hanger set and optional supporting bars)

# Coburn Compact

## Sliding Door Operator

The COBURN COMPACT Automatic Door Operator is leading-edge design at a competitive price. Suitable for doors of up to 40kg (or two doors up to 30kg per leaf), this drive unit incorporates intelligent technology to keep movements under control at all times. The self-seeking memory locates open and closed positions and recognises obstructions. Movement is smooth and regular at all times. The COBURN COMPACT can be used as a retrofit product for existing sliding doors and can also be used to automate HIDEAWAY™ Pocket Doors. Being fully reversible the COBURN COMPACT allows the door to be opened manually in the event of deactivation.

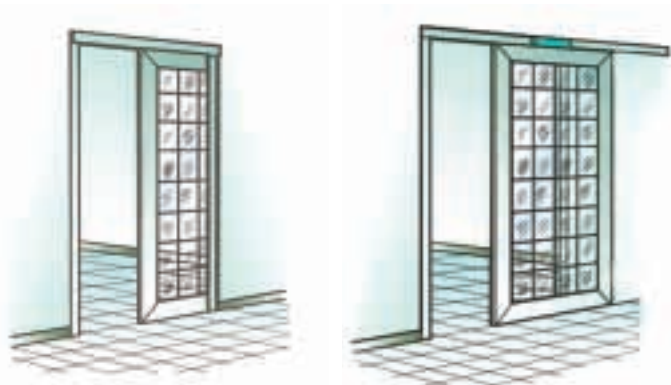
The COBURN COMPACT C1 comprises:

- ▶ Drive unit
- ▶ 1.5m drive belt
- ▶ Two belt couplings
- ▶ An Automatic Closing Adjuster
- ▶ A Pushbutton Panel

Additional loose parts such as P.I.R. and Pushbutton Panels are also available.

The COBURN COMPACT C2 includes the C1 components as listed above plus a Passive Infra-red Detector

*Note: If used with a pocket door, allowance must be made for access to the belt.*



HIDEAWAY™ Pocket Door with concealed automation

Indoor exposed door with exposed automation

### Coburn Compact

Maximum weight	Max 40Kg under ideal manual sliding conditions
Dimensions	305 x 73 x 76mm
Travel	Min. 300mm • max. 3500mm
Speed (1 leaf)	0.4m/s during opening 0.2m/s during closing
Power supply	To mains, 230V/50Hz with 1.5mm cable
Power input	0.2A
Motor	24Vdc with encoder
Force	30N
Electric board	Built-in, with microprocessor (Type 63)
Connections	<ul style="list-style-type: none"> <li>• to mains: 1.5m long cable with Schuko plug</li> <li>• between pushbutton panel and geared motor: telephone type connectors</li> </ul>
Limit switch	Automatic encoders
Lock	Not available
Behaviour upon obstacle detection	Movement reversal in case of obstacle being encountered during closing; stop during opening
Safety devices	Possibility of linking up photocells with opening function
Control connections	Telephone-type connectors
Outputs	24V/1.5A
Controls	Pushbutton, radar or other type of contact
Opening system	Pushbutton with radar, photocells, etc.
Closing system	Pushbutton or automatic (timer controlled)
Other features	External trimmers for automatic closing time adjustment. Possibility of selecting direction of movement from outside



COBURN COMPACT components

# Accessories

## ELECTRONIC ACCESSORIES

### Miniaturised Photocells:

amplifier, projector, receiver, 7m range  
Product No. 62-603

### Push Pads

Product No. 62-605  
Product No. 62-606

### Active and Passive Infra-red Detectors:

Product No. 62-601  
Product No. 62-604  
Product No. 62-608  
Product No. 62-609

### Large Pressure Pad

Product No. 62-602

### Self-programming Transmitter/Receiver Set

Product No. 62-607



## KIT ACCESSORIES

### Hangar Assemblies:

S40, S100  
Product No. 62-205  
Product No. 62-305

### Supporting Bars:

1000mm, 2000mm, 3000mm  
Product No. 62-306  
Product No. 62-307  
Product No. 62-308

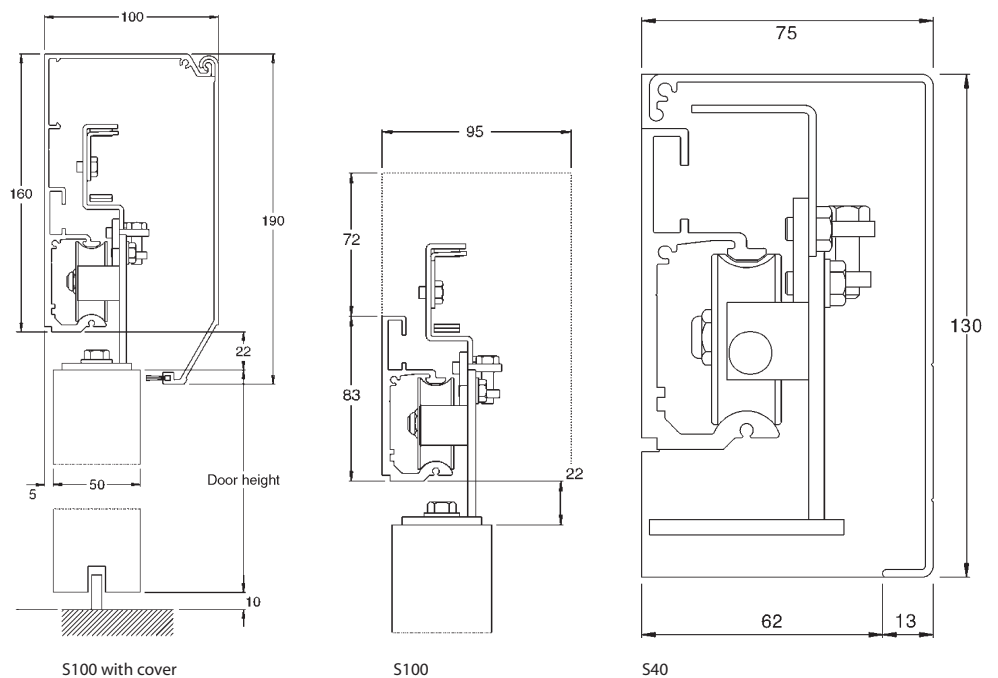
### S100 Glass Fitting Strips (S.A.A.):

1000mm, 2000mm, 3000mm  
Product No. 62-309  
Product No. 62-310  
Product No. 62-311

### Plastic Guides:

pack of 10  
Product No. 62-312 (Glass Doors)  
Product No. 63-313 (Timber Doors)

## VERTICAL SECTIONS



Floor mats



Opening detector



Safety detector



Photocells



Pushbutton panels

Hillaldam Coburn has a history of commitment to quality and technical developments. Products are always produced to the appropriate British Standards and the company was one of the first in the industry to have operating procedures approved under BS EN ISO 9001.

Constant testing ensures that quality is maintained and a programme of product improvement is regularly reviewed and updated. The company is an active member of the Association of Builders' Hardware Manufacturers. Today Hillaldam Coburn is proud to remain in the forefront of the industry as we take a leading role in working with the British Standards Institute to develop the new European standards (CEN). The following range of literature is available on request:

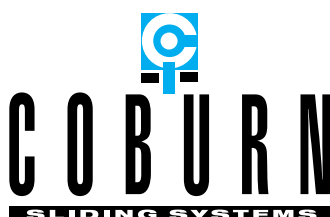
### SLIDING DOOR GEAR

- Glassmaster 100
- Straightaway Door Gear
- Foldaside & Cornaway
- Interior Sliding Systems
- Centafold & Foldaside
- The Buyers Guide
- Supplementary Door Gears
- HIDEAWAY™ Pocket Door Kit

### OTHER COBURN PRODUCTS

- Movable Walls & Partitions
- GLIDEMASTER™ Sliding Closures

Hillaldam Coburn Ltd. also offers an extensive range of Acoustic products for walls and floors through its subsidiary, Trim Acoustics. Comprehensive literature is available on request.



INVESTOR IN PEOPLE



Certificate No. FS 14679

The products designed and supplied by Hillaldam Coburn Ltd are covered by a Quality Assurance system in accordance with BS EN ISO 9001:2000

### HILLALDAM COBURN LIMITED

#### HEAD OFFICE

Unit 6, Wyvern Estate,  
Beverley Way, New Malden,  
Surrey, KT3 4PH, England.

**Telephone:** 020 8336 1515

**International:** +44 20 8336 1515

**Facsimile:** 020 8336 1414

**Sales Freefax:** 0800 616623

**e-mail:** sales@hillaldam.co.uk

**Web:** www.coburn.co.uk

#### SCOTLAND

Unit 25 Baillieston Distribution Centre,  
Glasgow, G69 6UL, Scotland.

**Telephone:** 0141 771 6165

**Facsimile:** 0141 773 1693

**Sales Freefax:** 0800 318904

*The company reserves the right from time to time to make such alterations in design and manufacture as they consider necessary without notice. Drawings, specifications, illustrations, tables and other details are not binding in detail. Conditions of sale are as those published on the Company's tender forms.*