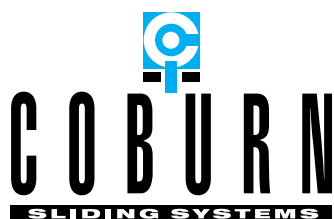


Uniclass L41103/4	EPIC D1111/2
CI/SfB (32.54) X	
OCTOBER 2003	

Coburn Wallmaster

Bottom Rolling Movable Walls



Coburn Wallmaster B Series

B240, B243, B245, B249

The Coburn Wallmaster B series of bottom rolling and acoustic sliding folding movable walls is designed to give ease of operation and creates a rigid and stable wall when closed. Offering superior acoustic performance up to Rw 49dB, Wallmaster is ideal for schools, community centres and offices, where space is at a premium and flexibility is a key issue.

Designed for new or existing buildings, the Wallmaster Series is particularly appropriate where the structure of the building precludes the use of a top-hung system.

Being the ultimate in quality, COBURN WALLMASTER movable walls can withstand many years of use without losing their smart appearance and reliable operation. Only the highest quality components are used ensuring that the products can be specified with complete confidence.



OPERATION

A series of custom built panels joined with purpose made bright aluminium hinges with loose pins making it easy to dismantle. Alternate panels contain an espagnolette bolt operated with a detachable handle at a convenient height from the floor. The locking pin engages the floor rail to ensure the folding panels close flat, flush and are rigid. Pass doors are fitted with flush pulls and roller catches. A lock can also be fitted as an optional extra.

PANELS

Panels are made with surface treated 12mm chipboard on a solid frame, with an interior insulating layer of mineral wool and bitumen matting where greater noise reduction is required. Walls of non-combustible chipboard can be supplied. Panels are 80mm finished thickness and have a satin anodised aluminium edge profile on all four sides.

TOP GUIDING

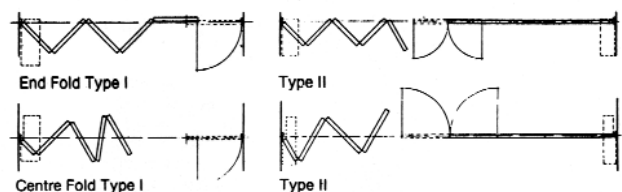
The lateral stability of the folding panels is achieved with a self-lubricating nylon roller running in a white powder-coated aluminium ceiling track. The track is adjustable by +/- 30mm to compensate for minor variances in height. The ceiling track is normally fitted to a continuous head timber – no direct loading – and is exposed below the suspended ceiling. It contains continuous hollow silicon rubber seals which brush on the top of the panels.

WALL JAMBS

Wall jambs are profiled white powder-coated aluminium with one jamb being adjustable by +/-25mm to compensate for minor variations in plumb or opening width. Alternative timber jambs can be supplied for veneered panel finishes upon request.

FLEXIBILITY

COBURN WALLMASTER folding walls are made entirely to customers' specifications as far as dimensions, number of panels and surface finish are concerned. There are four versions with differing degrees of sound attenuation.



COVERING

Panels can be clad with melamine, laminate or factory spray paint from our standard range, Muraspec vinyls, wood veneers, primer board for on site decoration (by others) or free issue wall coverings.

SEALING

Silicon rubber seals are inserted in the long edges of each panel and vertical profiles are channelled to receive an exposed grey PVC perforated seal to absorb and reduce sound transmission. Butyl rubber channel seals fitted to the bottom of each panel brush only on the rail surface, thus preventing drag and wear on the surface of the carpet. Silicon rubber seals are incorporated into the top track.



BOTTOM ROLLER

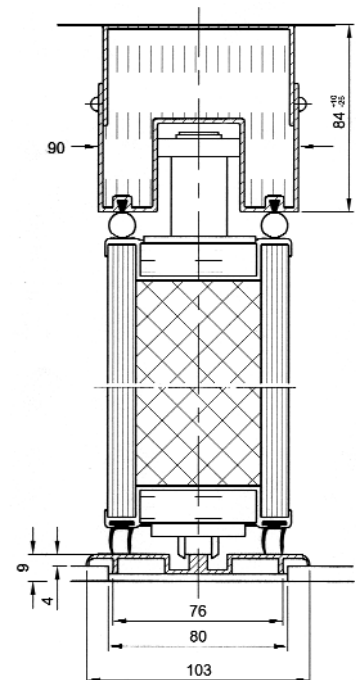
Rollers are fitted to alternate sections. To ensure trouble-free service, axial and radial ball bearings are dimensioned to bear greater loads than actually occur.

FLOOR RAIL

The anodised aluminium floor rail sits on top of the floor screed or raised floor, which must be level. The rail is 9mm deep overall and projects 4mm above the finished floor surface.

RANGE	B240	B243	B245	B249
Acoustic performance	Rw 40dB	Rw 43dB	Rw 45dB	Rw 49dB
Approx. weight per sq. m.	24kg	26kg	28kg	35kg
Max. clear opening height	6000mm	6000mm	6000mm	6000mm
Max. opening width	15m	15m	15m	15m
Max. panel width	1000mm*	1000mm*	1000mm*	1000mm*
Panel thickness	80mm	80mm	80mm	80mm

* Panel width between 700mm and 900mm recommended



Hillaldam Coburn has a history of commitment to quality and technical developments. Products are always produced to the appropriate British Standards and the company was one of the first in the industry to have operating procedures approved under BS EN ISO 9001.

SOUND ATTENUATION

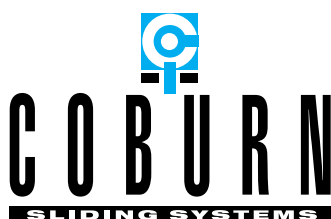
Standard sound reduction is Rw 40dB with a choice of three higher levels when required. Sound test certificates are available upon request.

All sound attenuation figures given are laboratory test results carried out under ideal conditions. It is generally accepted that in-situ site readings would give approx. 5dB reduction in a good installation with further reductions where pass doors and vision panels are included.

COBURN SLIDING SYSTEMS

Hillaldam Coburn Limited also supply a wide range of complementary sliding systems including:

- COBURN WALLMASTER M SERIES – a superior range of top hung acoustic movable walls
- COBURN CONCERTINA – expanding partitions for space division and minimal sound attenuation
- COBURN GLIDEMASTER™ – a simple, decorative maintenance-free alternative to roller shutters
- FOLDASIDE & CENTAFOLD – fittings for interior timber folding partitions



INVESTOR IN PEOPLE



Certificate No. FS 14679

The products designed and supplied by Hillaldam Coburn Ltd are covered by a Quality Assurance system in accordance with BS EN ISO 9001:2000

HILLALDAM COBURN LIMITED

HEAD OFFICE

Unit 6, Wyvern Estate,
Beverley Way, New Malden,
Surrey, KT3 4PH, England.

Telephone: 020 8336 1515

International: +44 20 8336 1515

Facsimile: 020 8336 1414

Sales Freefax: 0800 616623

e-mail: sales@hillaldam.co.uk

Web: www.coburn.co.uk

SCOTLAND

Unit 25 Baillieston Distribution Centre,
Glasgow, G69 6UL, Scotland.

Telephone: 0141 771 6165

Facsimile: 0141 773 1693

Sales Freefax: 0800 318904

The company reserves the right from time to time to make such alterations in design and manufacture as they consider necessary without notice. Drawings, specifications, illustrations, tables and other details are not binding in detail. Conditions of sale are as those published on the Company's tender forms.