



# Flat track 100

## Sliding & Folding Door Systems



### Product Overview

The Flat Track 100 sliding hardware offers a traditional rustic look and is ideal for barn conversions, cottages or renovations on listed buildings, for doors up to 100kg.

The exposed hardware is available in a black powder coated finish as standard finish and its nylon bearing wheels ensure the hangers move smoothly and silently across the flat bar.

### Features

- Durable steel strap hangers with PA6 6 nylon wheels run effortlessly and silently across a solid flat track
- Nylon wheels supplied with precision sealed ball bearings
- Anti-jump blocks prevent door from being removed from track
- Soft closing available, concealed behind the flat bar track
- Easy to install
- Choice of hanger styles and finishes available
- For internal use only

### Technical Specifications

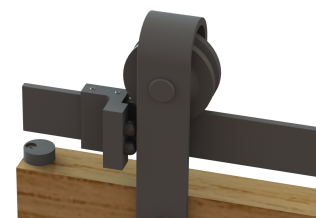
- Maximum Door Weight: 100kg
- Minimum Door Width: 550mm
- Maximum Door Width: 1500mm
- Door Thickness: 36 – 44mm



Soft closer  
(Fitted behind track)



Hanger



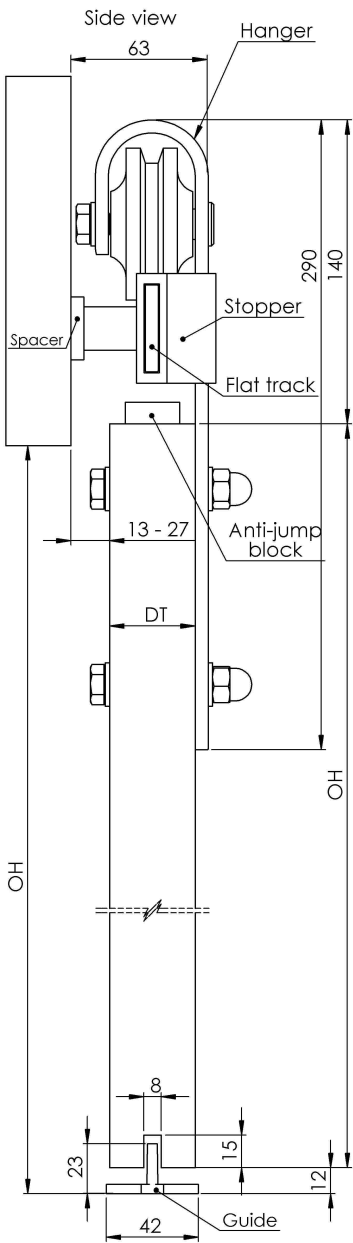
Track stop and anti-jump block



Guide



Flat track 100



Maximum door weight 100kg

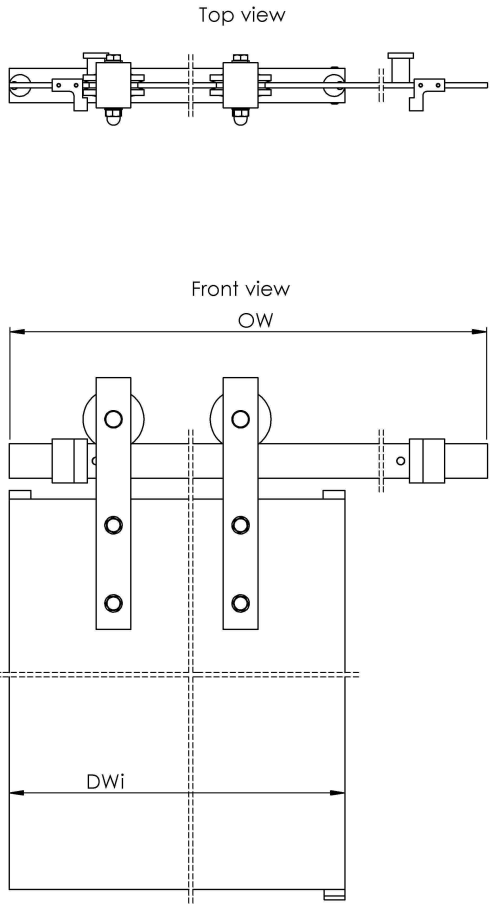
DH - Door height

DWi - Door width, between 550mm - 1500mm

DT - Door thickness, between 36mm and 44mm

OW - Opening width

OH - Opening height

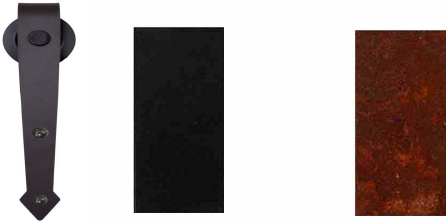


Hanger Types

Straight



Arrowhead



Wagon wheel



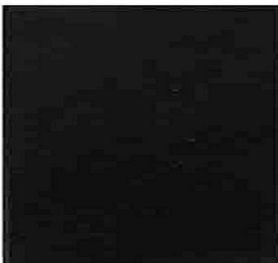
Top Mount



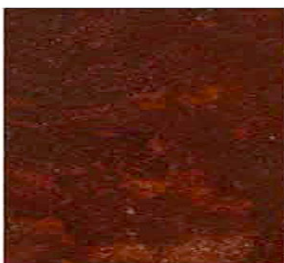
Finishes Available



Black



Rust



\*Brushed



\*\* Material: 304 Stainless Steel

Dealer Stamp

Blank area for Dealer Stamp.

For further information on our products and services:  
Tel: +44 (0)20 8545 6680 sales@coburn.co.uk www.coburn.co.uk

**Coburn Sliding Systems**  
Unit 1, Cardinal West, Cardinal Way, Cardinal Distribution Park,  
Godmanchester, Huntingdon, Cambridgeshire, PE29 2XN United Kingdom.