



## House One Residential Sliding & Folding Door Systems

### Door Specifications

- Maximum Door Weight: 45kg
- Door Thickness: 30-44mm
- Door Construction:  
Suitable for timber doors
- Maximum Door Width: 1050mm
- Maximum Door Height: 2100mm
- Track Dimensions: 20mm (w) x 34mm (h)

### Hardware Specifications

- Anodised aluminium top track drilled and countersunk for side fixing
- Smooth and quiet operation due to nylon wheeled hangers
- No recessed bottom tracks required, door guide fixed to the reveal leaving a clear threshold
- For internal single door applications
- Can be soffit fixed with additional brackets

# House One

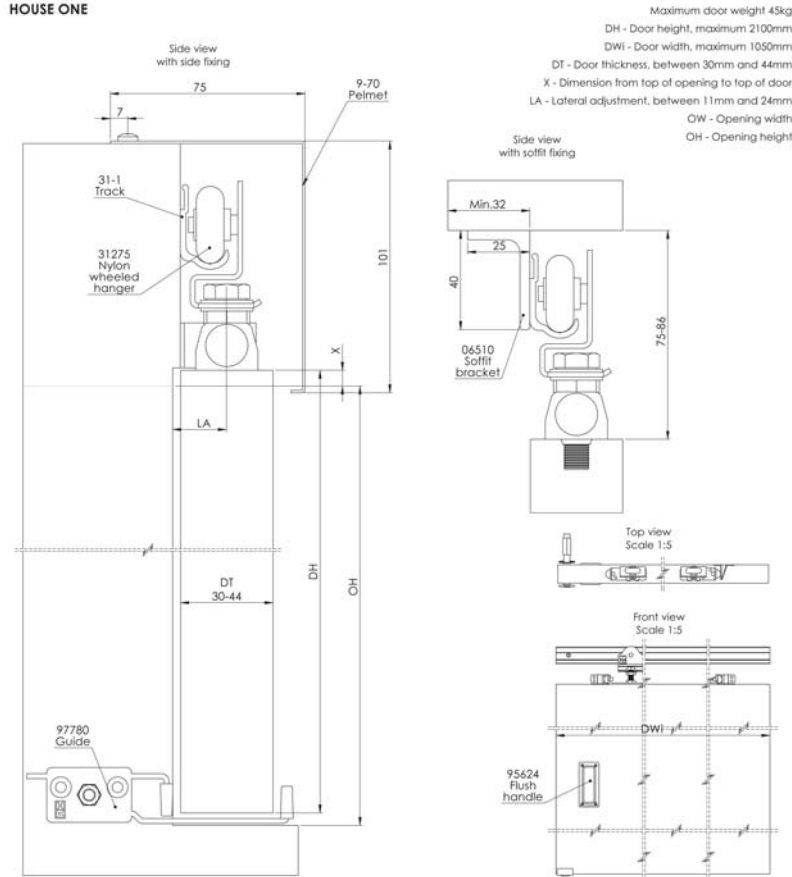
## Residential Sliding & Folding Door Systems

### Product Overview

House One is a simple internal system for room entrance doors up to 45kg. This quiet system needs virtually no maintenance, is effortless to operate and highly durable.

### Technical Specification

HOUSE ONE



| Article No. | Description   | Image |
|-------------|---|-------|
| 01001       | Trackset for one door 600mm-750mm   |       |
| 01002       | Trackset for one door 750mm-900mm   |       |
| 01003       | Trackset for one door 900mm-1050mm  |       |
| 311         | Anodised aluminium top track available in 1.2, 1.5 and 1.8m lengths   |       |
| 06510       | Pack of six soffit brackets   |       |
| 31275       | Nylon wheeled hanger  |       |
| 97780       | Adjustable guide for jamb fixing for interior doors up to 1.5m, 30-45mm thick                                 |       |
| 97018       | Galvanised steel pelmet 1.8m  |       |
| 97024       | Galvanised steel pelmet 2.4m  |       |
| 95615       | Rectangular flush handle, 50mm x 100mm, polished brass<br>(For our full range of accessories see pages 96-97) |       |

**Trackset contents:** Aluminium top track, pair of adjustable hangers, door guide, door stops and all woodscrews.



For further information please contact us:  
 Tel: +44 (0)20 8545 6680 sales@coburn.co.uk www.coburn.co.uk

