



Double 60 X Commercial Sliding & Folding Door Systems

Door Specifications

- Maximum Door Weight: 27kg
- Door Thickness: 36-44mm
- Door Construction:
Door width quarter height minimum, handle two thirds from bottom for best results.
- Maximum Door Width: 1000mm
- Maximum Door Height: 2000mm
- Track Dimensions:
63mm (w) x 27mm (h)

Hardware Specifications

- One piece anodised aluminium double top track
- Top track soffit fixed
- Bottom guides may be rebated, surface fixed or a recess routed into the bottom of the door to allow guide to be offered.
- Smooth and quiet in operation

- Minimal maintenance
- Can be used with Coburn soft closer kit

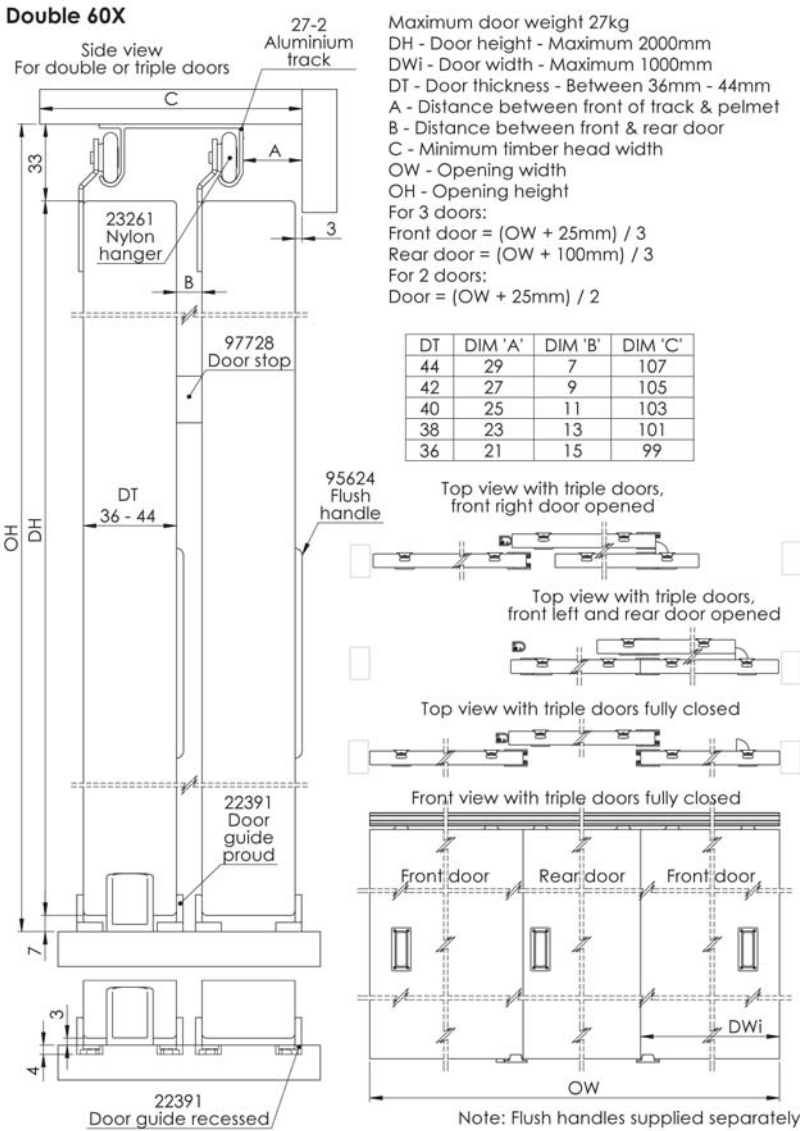
Double 60 X

Commercial Sliding & Folding Door Systems

Product Overview

Double 60 X is an internal sliding door system for thicker wardrobe doors and other storage units. It is suited to applications such as hotel wardrobes and cupboards and is a reliable and durable system which operates easily with minimal maintenance.

Technical Specification



Article No.	Description	Image
06054	Trackset for two doors within a 1200mm opening	
06055	Trackset for two doors within a 1500mm opening	
06056	Trackset for two doors within a 1800mm opening	
06058	Trackset for three doors within a 2400mm opening	
06021	Single component pack	
272	Anodised aluminium track available in 1.2, 1.5, 1.8 and 2.4m lengths	
23261	Pair of hangers	
30627	Soft closer kit (one per door needed)	
95624	Rectangular flush handle, 40mm x 90mm, aluminium (For our full range of accessories see pages 96-97)	

Trackset contents: Double piece top track, hangers, nylon guides, door stop and all woodscrews.

Component pack contents: Hangers, nylon guides, door stop and all woodscrews.



For further information please contact us:
 Tel: +44 (0)20 8545 6680 sales@coburn.co.uk www.coburn.co.uk

