



Straightaway 710 Commercial Sliding & Folding Door Systems

Door Specifications

- Maximum Door Weight: 180kg
- Door Thickness: 30-60mm
- Maximum Door Height: 3000mm
- Top Channel Dimensions: 45mm (w) x 29mm (h)

● Door Construction:

Door thickness 30 to 60mm, width one third height minimum, handle height three fifths from bottom for best results.

The sliding panel when fully open should project a minimum of 65mm to avoid fingers becoming trapped between handle and fixed panel. Bottom rail should be of sufficient depth to house roller casing.

Hardware Specifications

- Steel top guide safety pattern track galvanised to BS EN 10346
- Stainless steel floor track drilled and countersunk for woodscrews, set proud or flush
- Die cast casings on rollers, steel wheels with ball bearings
- Top channel fixed directly to soffit without the aid of brackets

Straightaway 710

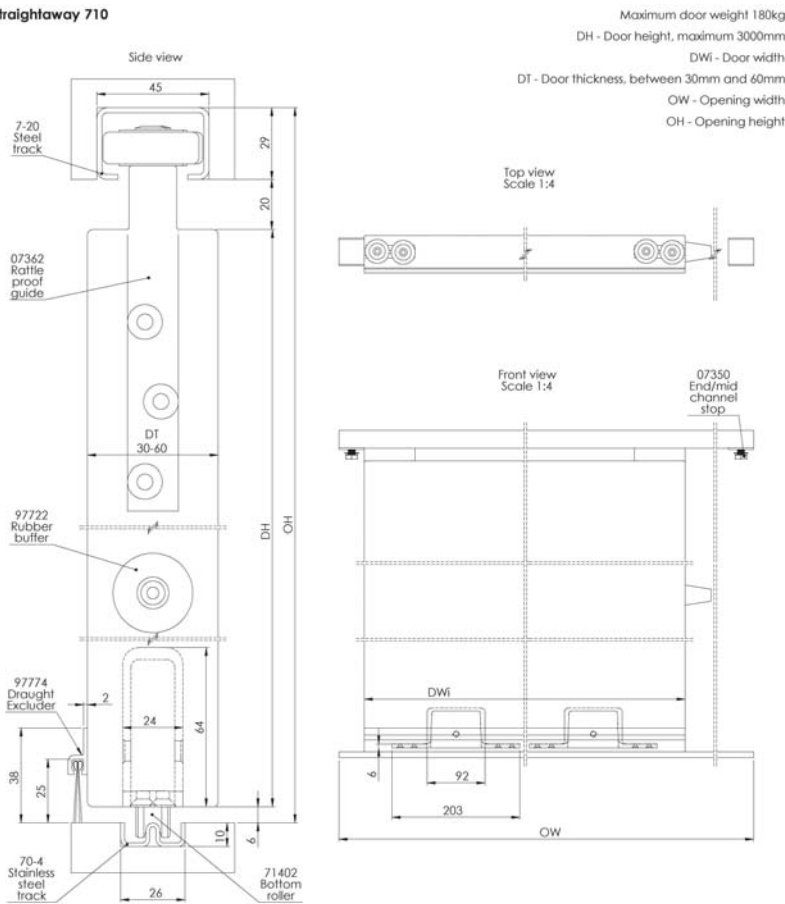
Commercial Sliding & Folding Door Systems

Product Overview

Straightaway 710 is a bottom rolling sliding door system for internal or external doors. It is ideal for windows, patio doors etc. and is suited to applications such as hotels, hospitals and residences. Straightaway 710 is a reliable and hardwearing system that can be used where there is not sufficient overhead support for a top hung system.

Technical Specification

Straightaway 710



For further information please contact us:
 Tel: +44 (0)20 8545 6680 sales@coburn.co.uk www.coburn.co.uk

Article No.	Description	Image
720	Galvanised steel top channel available in 1.8, 2.1, 2.4 and 3.0m lengths	
704	Stainless steel bottom track available in 2.4 and 3.0m lengths	
07362	Rattleproof top guide (pair)	
71402	Bottom roller – mortice fixing – pair	
97774	Draught excluder – Brush welt with aluminium retaining strip 2.4m	
97722	Rubber buffer	
07350	End/mid channel stop	
95612	Rectangular flush handle, 50mm x 100mm, stainless steel. Depth 16mm, consider thickness of doors when fixing back to back	
95624	Rectangular flush handle, 40mm x 90mm x 10mm, aluminium (For our full range of accessories see pages 96-97)	

