

Dreamfold External Door Systems



Product Overview

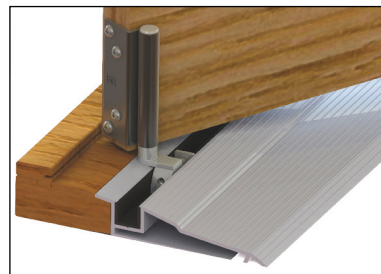
Dreamfold is a highly durable hardware system meticulously designed for external timber folding doors, where a high level of corrosion resistance and weather proofing is required. The system operates with effortless ease enabling the folding doors to fully open either outwards or inwards to allow the user to enjoy the great outdoors.

Features

- Cast stainless steel hangers c/w delrin nylon outer wheels and precision stainless steel bearings ensure optimum corrosion resistance
- Precision made components guarantee smooth and silent operation
- Door and frame seals provide superior weatherproofing
- Suitable for up to 6 door leaves in a single direction
- Variable height and sideways adjustment in doors
- Aluminium threshold and other accessories available

Technical Specifications

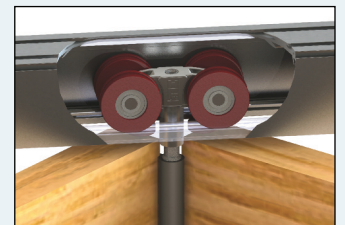
- Maximum door weight: 85kg
- Maximum door height: 3300mm
- Maximum door width: 1000mm
- Door Thickness: 35 – 70mm
- Track Dimensions: 51mm (w) x 55mm (h)



Bottom pivot assembly c/w polypropylene channel and aluminium threshold



Top pivot assembly



Intermediate 4 wheel hanger



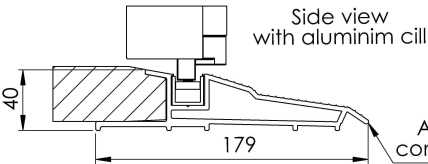
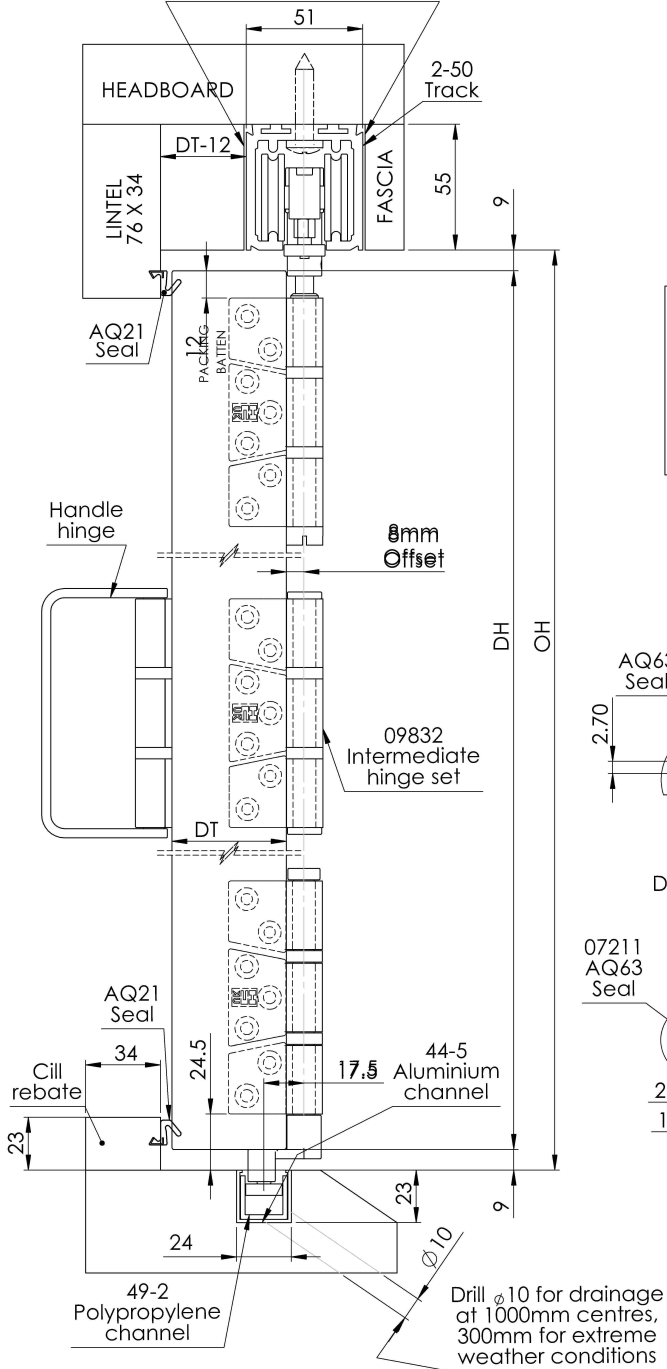
Intermediate bottom guide



Dreamfold

1mm gap each side for movement between 2 different materials. Fill with clear silicon sealant

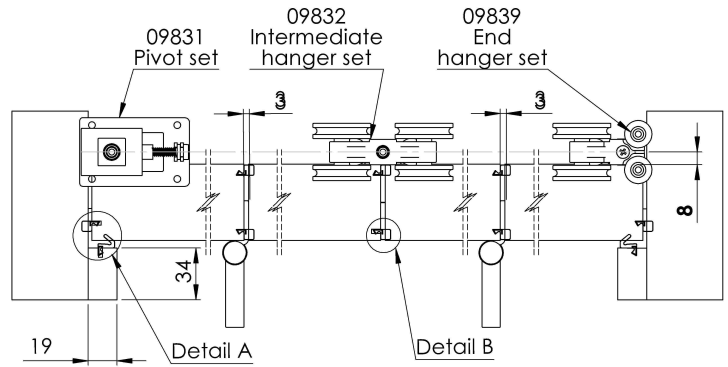
Side view



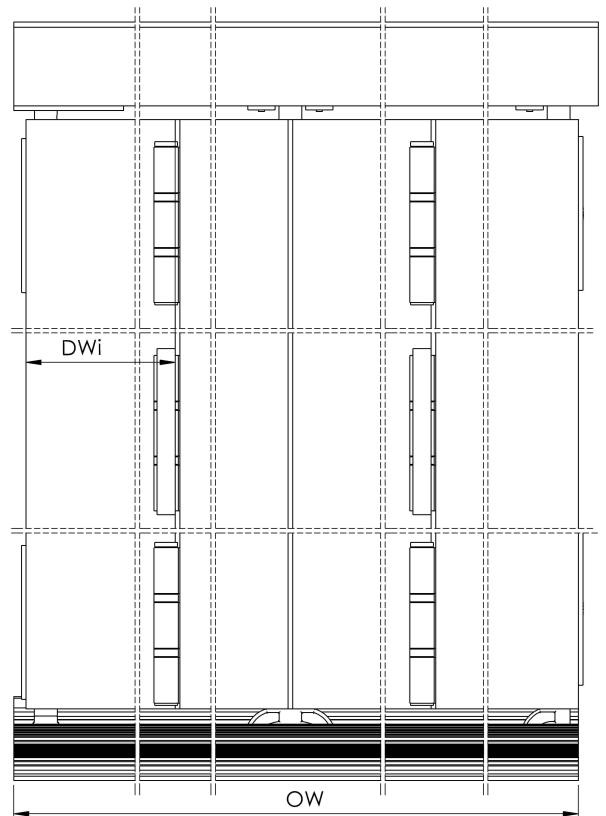
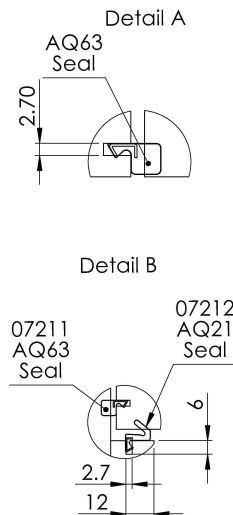
Alternative aluminium cill threshold by Coburn, comes complete with predrilled holes for drainage

Maximum door weight 85kg
 DH - Door height, maximum door height 3300mm
 DWi - Door width, maximum 1000mm
 DT - Door thickness between 35mm and 70mm
 OW - Opening width
 OH - Opening height

Top view Scale 1:3



Top view Scale 1:3



For further information on our products and services:

Tel: +44 (0)20 8545 6680 sales@coburn.co.uk

www.coburn.co.uk

7cVi fb 'G'X]b['GnHYa g@a]HX

Unit 1, Cardinal West, Cardinal Way, Cardinal Distribution Park,
 Godmanchester, Huntingdon, Cambridgeshire, PE29 2XN United Kingdom.

