

Eternal 130 External Door Systems



Product Overview

The Eternal 130 top hung sliding door system is manufactured using cutting edge technology, which has been developed to maximise longevity of the sliding door system. The system is also available with soft closing and simultaneous opening features.

The system is ideal for external sliding doors which are to be installed in locations where the severest weather conditions are prevalent and where doors are exposed to high levels of corrosion.

Features

- Tracks can be ceiling mounted or face fixed
- Suitable for timber, aluminium or metal doors
- Cast SS316 stainless steel hangers c/w delrin nylon outer wheels and precision stainless steel bearings ensure optimum corrosion resistance
- Smooth and silent running
- No recessed floor tracks necessary
- Soft closing available
- Simultaneous opening (synchro) optional

Technical Specifications

- Maximum door weight: 130kg
- Maximum door height: 3000mm
- Door Thickness: 20 – 50mm
- Track Dimensions: 38mm (w) x 41mm (h)



Soft close single damper kit



Wall fixed track c/w hanger and apron plate for timber doors



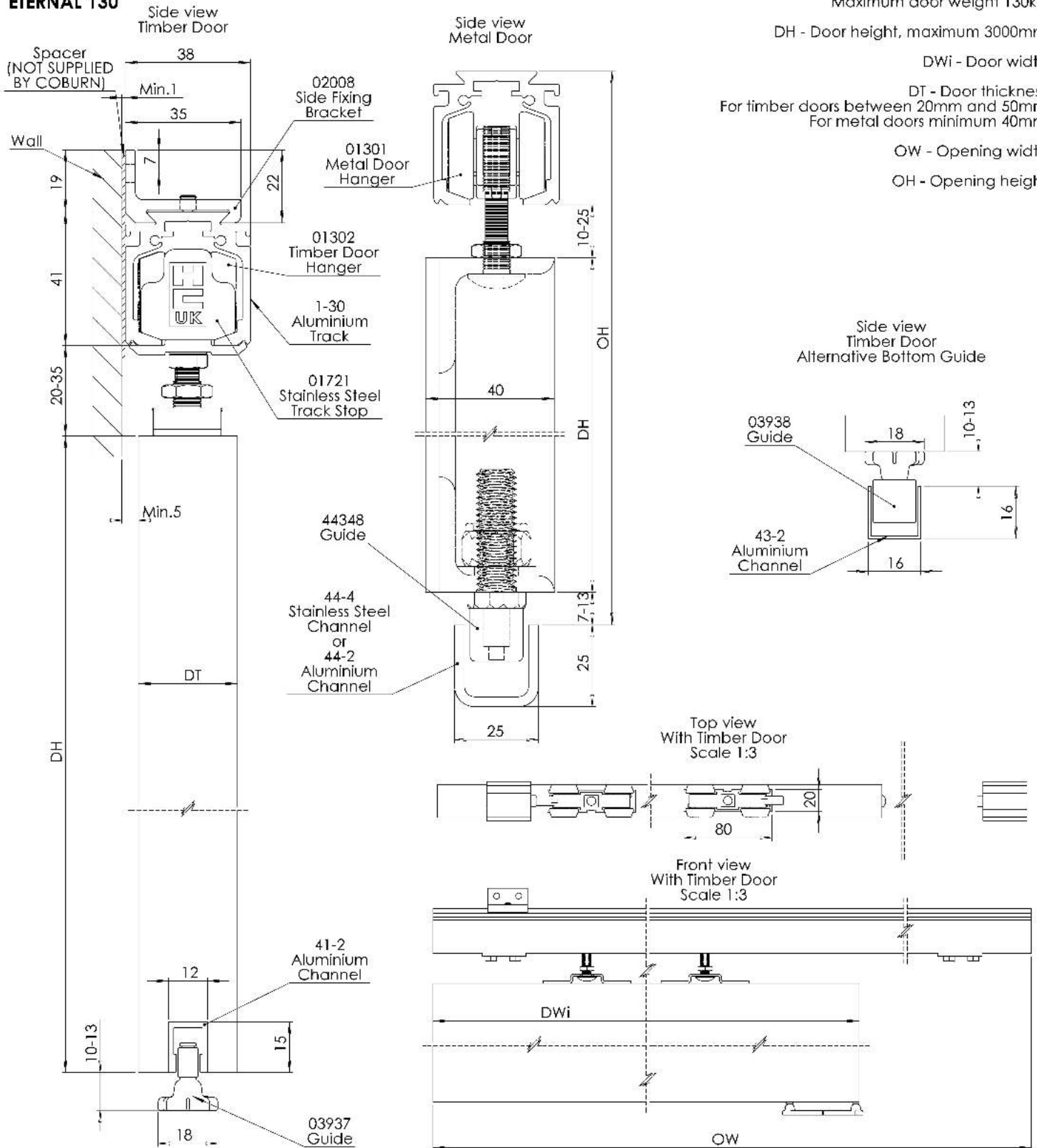
Soffit fixed track c/w hanger for metal doors



Adjustable rattle proof floor guide



ETERNAL 130



Maximum door weight 130kg

DH - Door height, maximum 3000mm

DWi - Door width

DT - Door thickness
For timber doors between 20mm and 50mm
For metal doors minimum 40mm

OW - Opening width

OH - Opening height



For further information on our products and services:

Tel: +44 (0)20 8545 6680 sales@coburn.co.uk www.coburn.co.uk

7cVi fb 'G'X]b['GnhYa g'@a]hX

Unit 1, Cardinal West, Cardinal Way, Cardinal Distribution Park,
Godmanchester, Huntingdon, Cambridgeshire, PE29 2XN United Kingdom.

Dealer Stamp