

# Straightaway G130 Glass Door Systems



## Product Overview

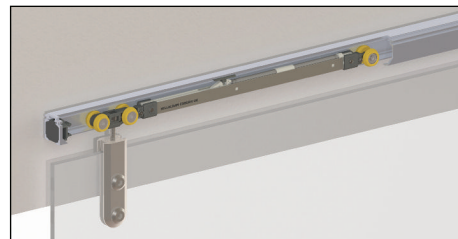
The Straightaway G130 is a sleek and efficient straight sliding system suitable for heavier duty interior frameless glass doors. A compact top track, which can be ceiling mounted, recessed within a ceiling void or fitted directly to a face of a wall, combined with attractive stainless steel patch fittings and an inconspicuous guide at floor level, help create a minimalistic and sophisticated look.

## Features

- Tracks can be ceiling mounted or face fitted
- Smooth and quiet running
- Patch fittings supplied in brushed stainless steel finish
- No recessed floor tracks required

## Technical Specifications

- Maximum Door Weight: 130kg
- Maximum Door Height: 3000mm
- Glass Thickness: 10mm or 12mm
- Track Dimensions: 38mm (w) x 40mm (h)



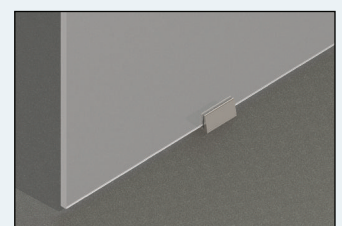
130 hanger c/w integrated soft closer



Patch fitting with pre-drilled holes in glass



Patch fitting c/w hanger and cover plate



Glass floor guide



STRAIGHTAWAY G130

Maximum door weight 130kg

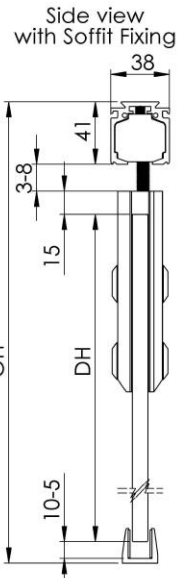
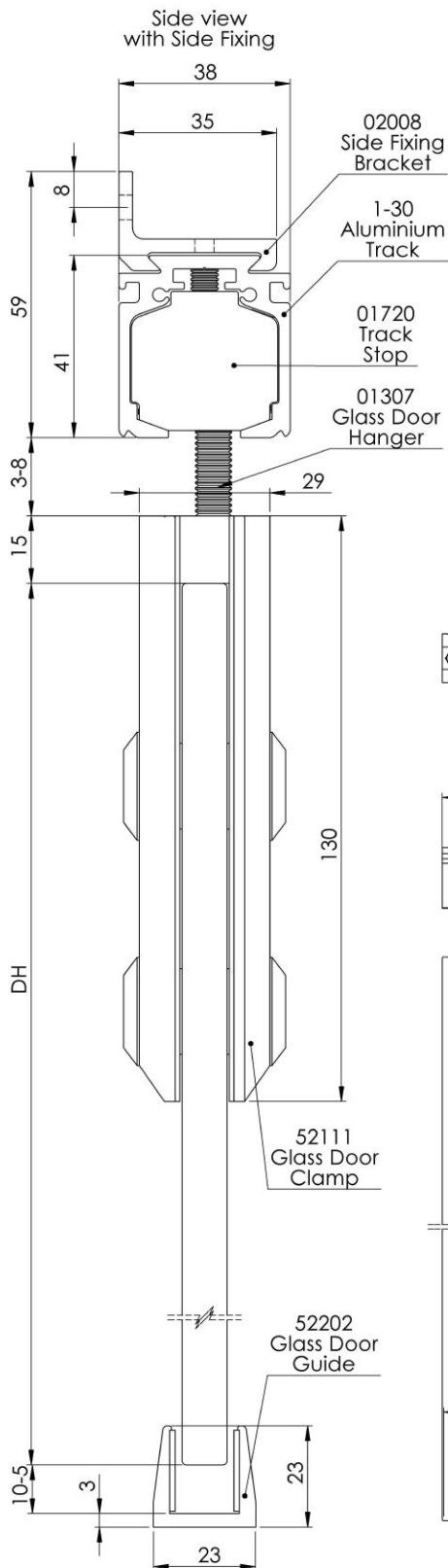
DH - Door height, maximum 3000mm

DWi - Door width

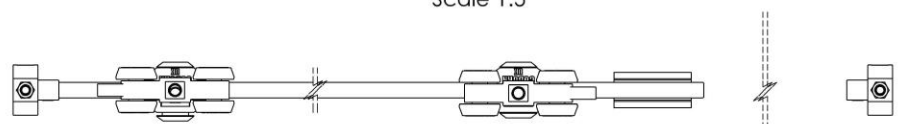
DT - Door thickness, 10mm or 12mm

OW - Opening width

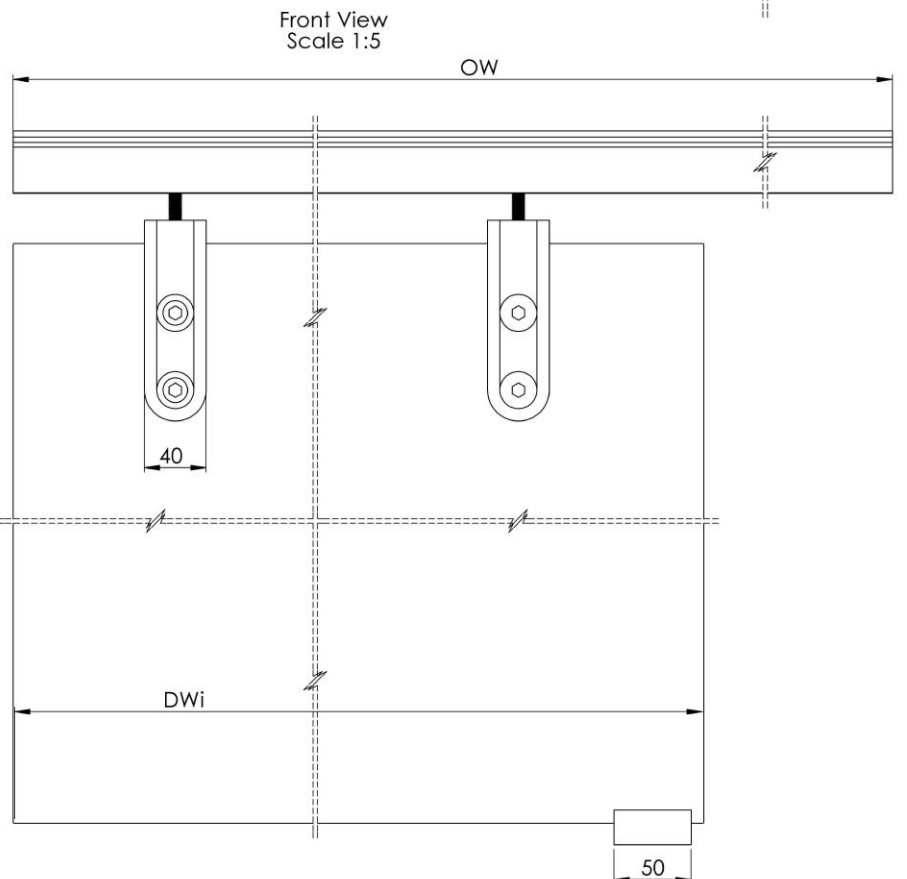
OH - Opening height



Top View Scale 1:5



Front View Scale 1:5



For further information on our products and services:

Tel: +44 (0)20 8545 6680 sales@coburn.co.uk www.coburn.co.uk

7cVi fb 'G'X]b[ 'GnhYa g@a ]HX

Unit 1, Cardinal West, Cardinal Way, Cardinal Distribution Park, Godmanchester, Huntingdon, Cambridgeshire, PE29 2XN United Kingdom.

