

COBURN SLIDING SYSTEMS LTD UNIT-1 CARDINAL WAY GODMANCHESTER PE29 2XN UK

MAXIMUM DOOR WEIGHT
22KG (ODD LEAF SYSTEMS)

MAXIMUM DOOR WEIGHT
30KG (EVEN LEAF SYSTEMS)

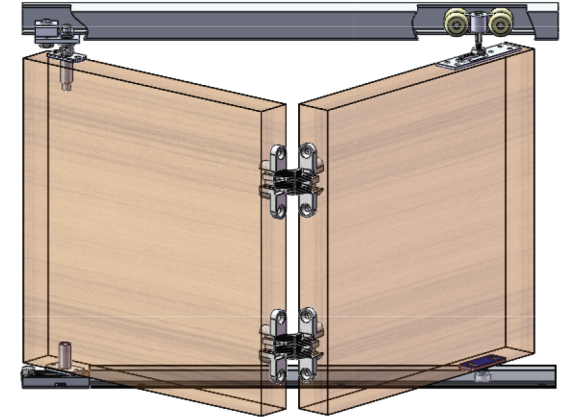
DOOR THICKNESS 20-40mm

MAXIMUM DOOR WIDTH
600mm, HEIGHT 2500mm

DOORS OVER 2100mm
REQUIRED 4 HINGES.

MAXIMUM OPENING 3600mm

KITS AVAILABLE AS 2, 3 AND
4 DOOR LEAFSYSTEM

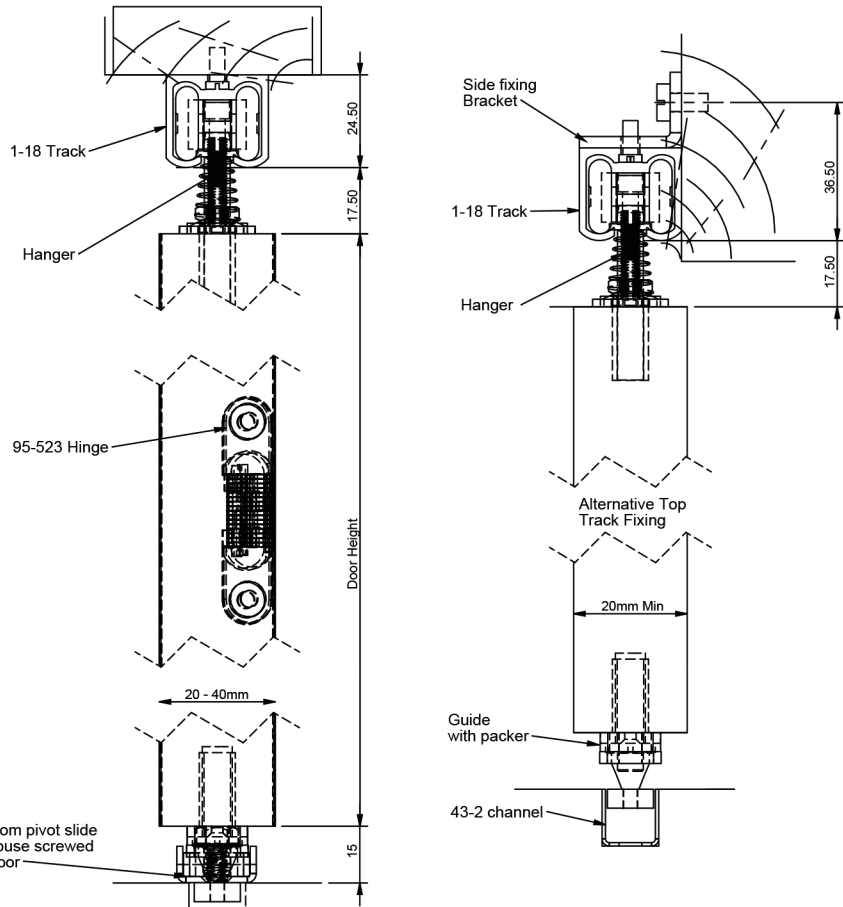
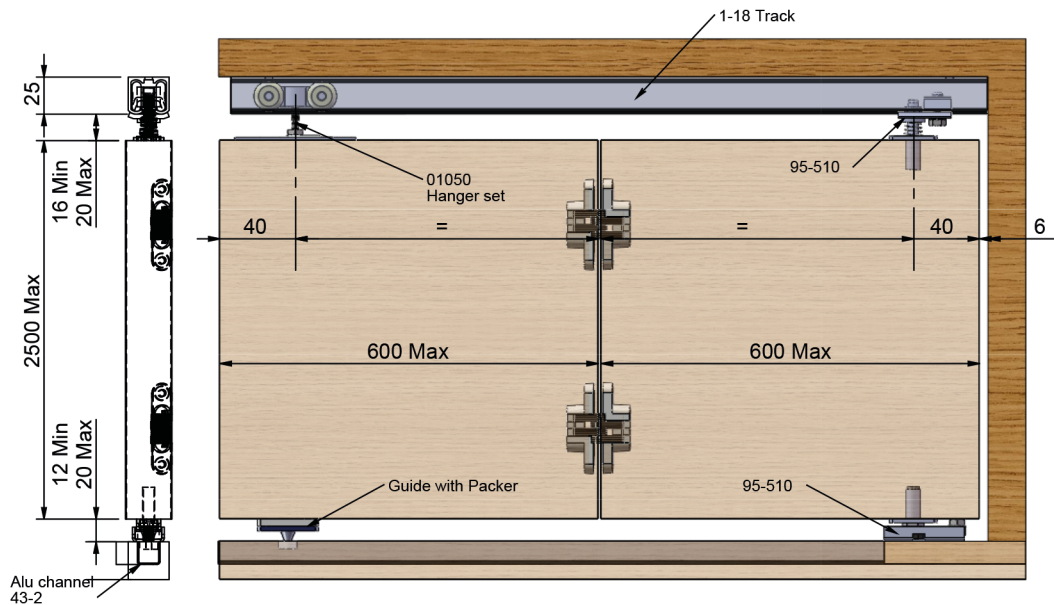


CAT NO: 01211



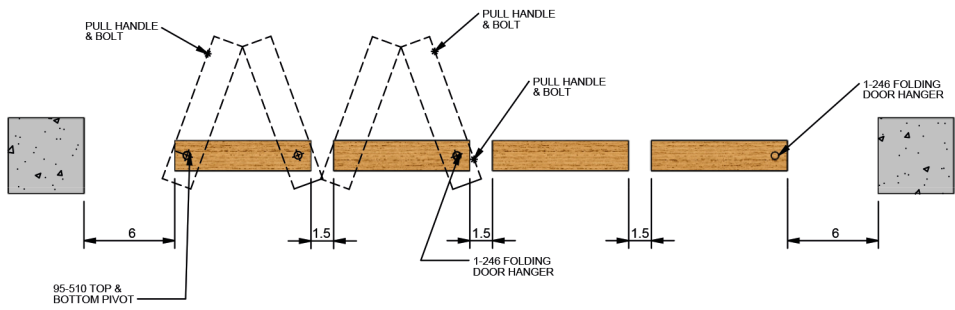
CAT NO: 01212

CAT NO: 01213

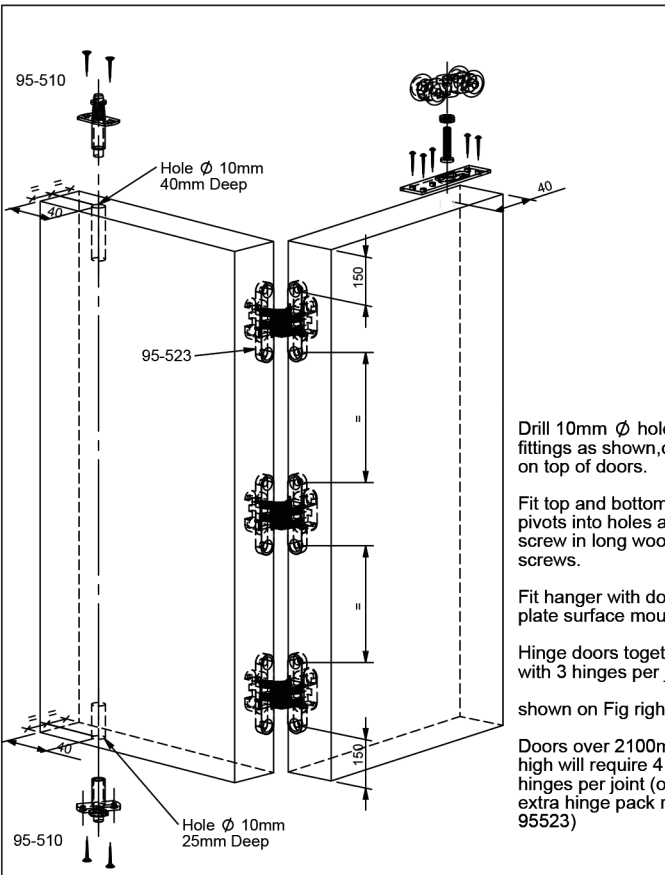


SECTION THROUGH OPENING

BOTTOM GUIDING FOR
DOORS OVER 450mm WIDE



PLAN SHOWING FOUR LEAVES TO ONE SIDE



Drill 10mm \varnothing holes for fittings as shown, central on top of doors.

Fit top and bottom pivots into holes and screw in long wood screws.

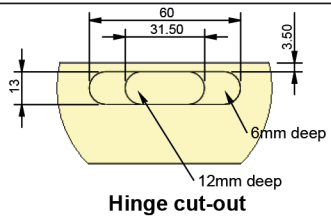
Fit hanger with door plate surface mounted.

Hinge doors together with 3 hinges per joint

shown on Fig right.

Doors over 2100mm high will require 4 hinges per joint (order extra hinge pack ref: 95523)

TRACK LENGTH (mm)	PITCH "A" (mm)	NO. OF HOLES
1200	272	5
1800	241	8
2400	229	11



Hinge cut-out

First drill \varnothing 5mm holes with pitch centres as shown on the table above for the different track lengths

Fit track to wall with the brackets and screws or directly through the track to the top support using suitable fixings.

Assemble top pivot as shown and enter end of track, securing bolt finger tight.

Locate top pivot centre line, 46mm from jamb, plumb down locate and fix bottom pivot to floor.

Carefully slide doors in a folded position into the track from the opposite end of the pivot fixings.

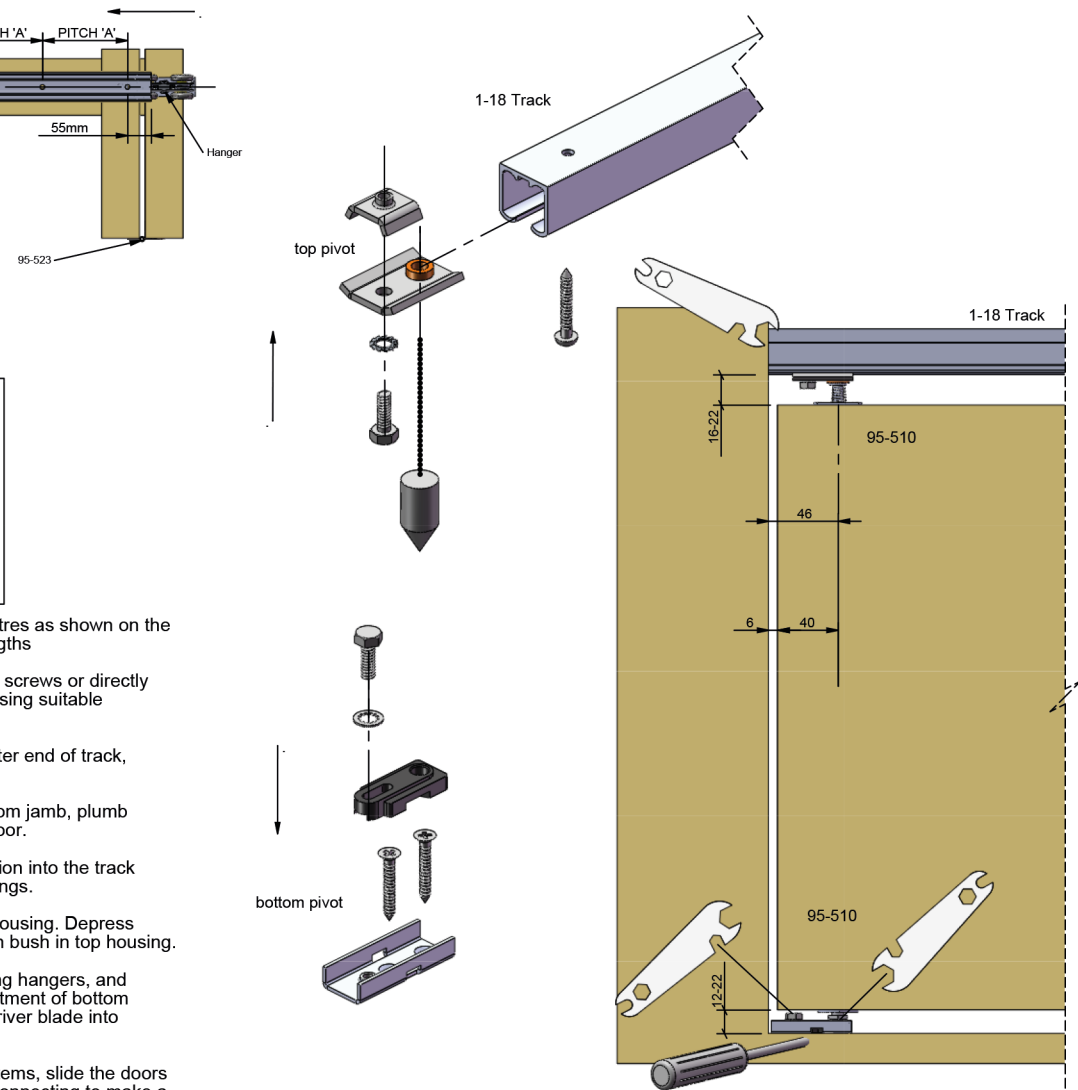
Engage bottom door pivot into floor housing. Depress spring loaded top pivot and engage in bush in top housing.

Adjust vertically and laterally, including hangers, and tighten all lock nuts. NB. lateral adjustment of bottom pivot is assisted by engaging screwdriver blade into side of housing.

NOTE: When installing four door systems, slide the doors into the track hinged in pairs before connecting to make a four door set.

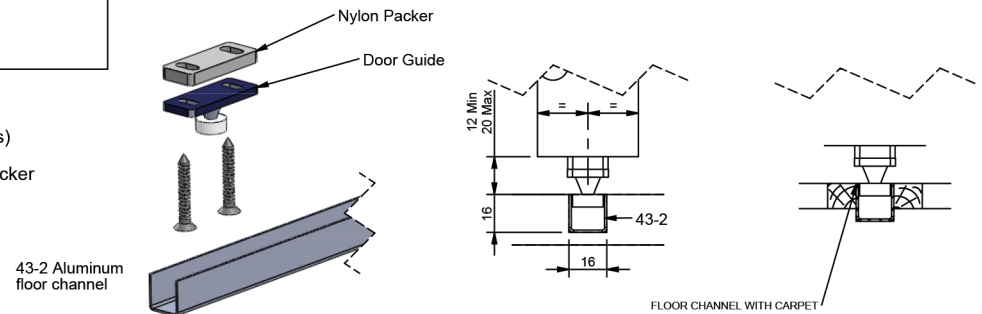
Safety Advice: Assistance in supporting doors makes locating the pivots easier and safer.

Doors over 450mm wide, or with weight in excess of 15kg, need stabilizing with door guide fitted plumb under top hanger(s) and engaging 43-2 floor channel. Guide needs to be packed with a nylon packer (01052.01) as shown in picture.



	1-18	1200mm	1800mm	2400mm
	Item no	01211	01212	01213
	01050.02 01050.03	1 each (01050.02)	1 each (01050.02)	1 each (01050.03)
	95-510T	1 no	1 no	1 no
	95-510B	1 no	1 no	1 no
	95-523 Pack	1 pack	2 packs	3 packs
	Nylon packer (01052.01)	1 no	1 no	2 no
	43-2	1200mm	1800mm	2400mm

Note: 95-523 hinge pack includes 3 hinges.



43-2 Aluminum floor channel

FLOOR CHANNEL WITH CARPET