

SLYDE 40

FITTING INSTRUCTIONS

SLYDE 40

Maximum door weight 40kg

DH - Door height, between 700mm and 1500mm

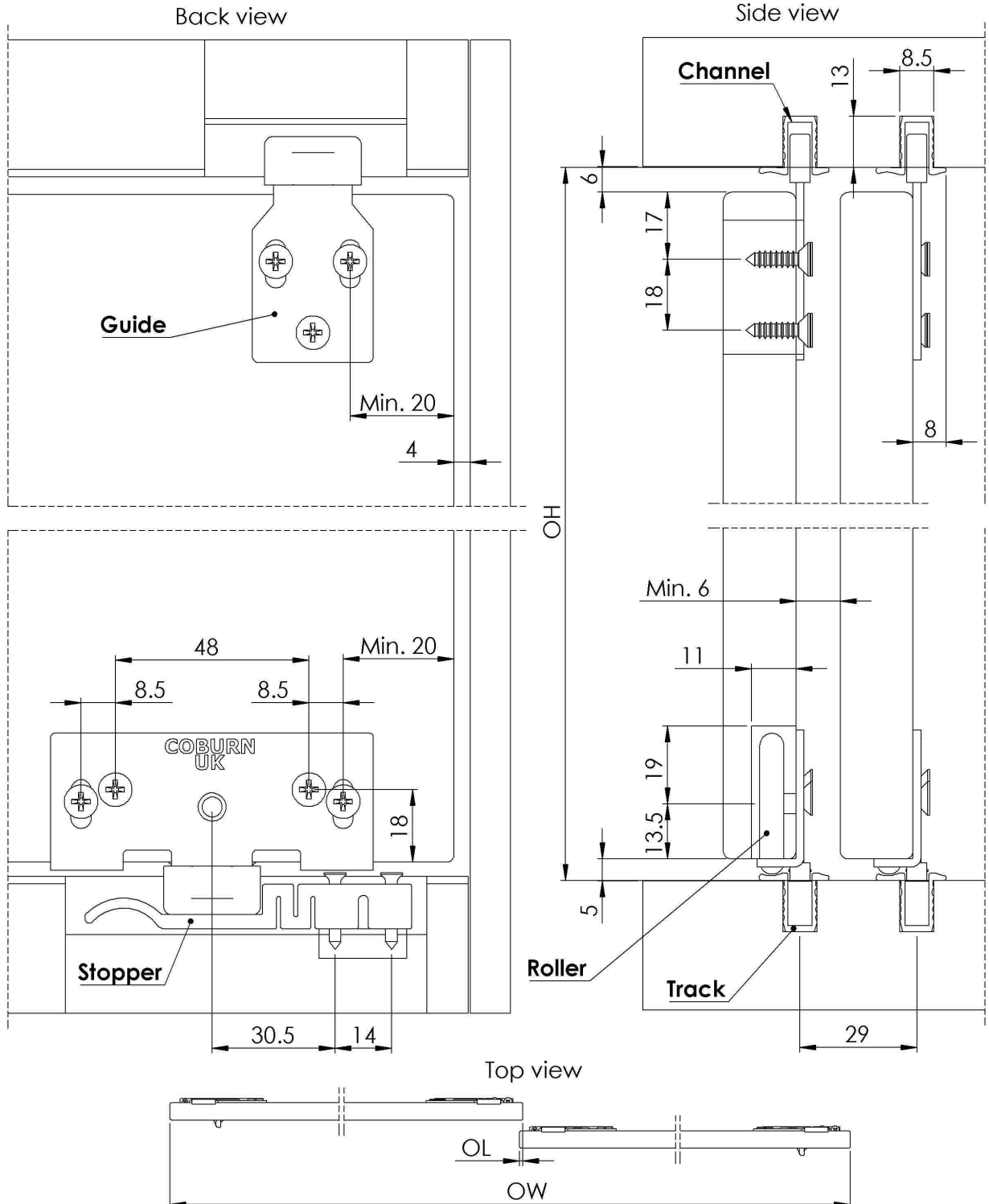
DWi - Door width, between 400mm and 1000mm

DT - Door thickness, between 18mm and 20mm

OL - Door overlap

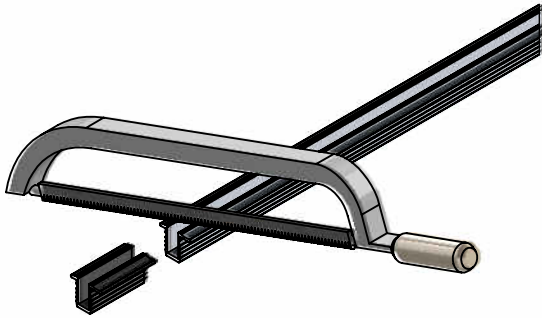
OW - Opening width

OH - Opening height



1

Cut tracks to required length

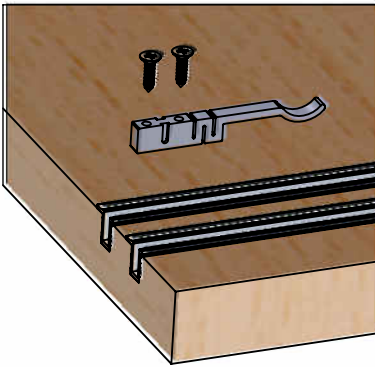


2

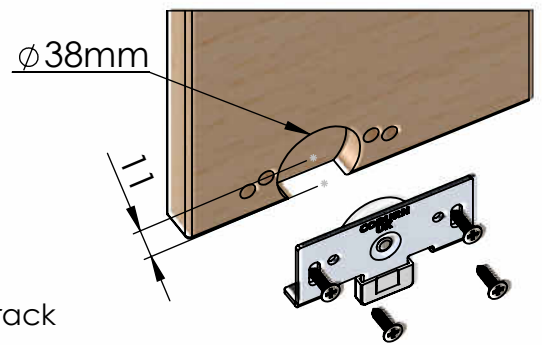
Insert the track in the top and bottom cut outs



3

Place the stopper and fix it with screws ($\varnothing 3.5 \times 30\text{mm}$)

4

Prepare the door, position the rollers and fix them with screws ($\varnothing 4 \times 15\text{mm}$)

5

Offer door on to the track



6

Insert the door and slide the guides into profile. Tighten the screws ($4 \times 15\text{mm}$, wood screws)