

INSERTOR POCKET DOOR SYSTEM ASSEMBLY INSTRUCTIONS



Systems for 100mm finished wall are suitable for doors up to 40mm thick.

Systems for 125mm finished wall are suitable for doors up to 55mm thick.

The screws supplied with the system are suitable for the 12.5mm plasterboard. Holes should be drilled to correspond with the raised corrugations of the pocket side panels. Only screws less than 15mm in length should be used with 12.5mm plasterboard.

IMPORTANT!

Opening height must be measured from finished floor level (taking account of any flooring)

Opening must be square, plumb with studs and level.

Please read through the instructions before commencing installation.

INSERTOR

Maximum door weight 120kg

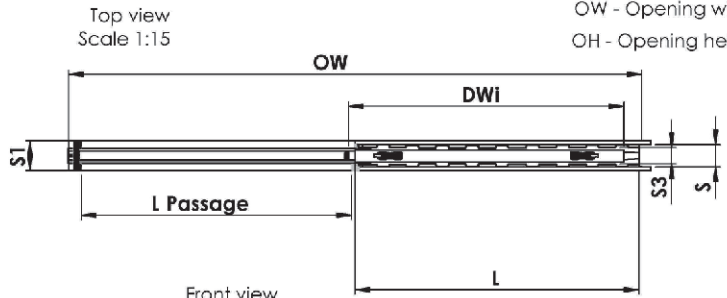
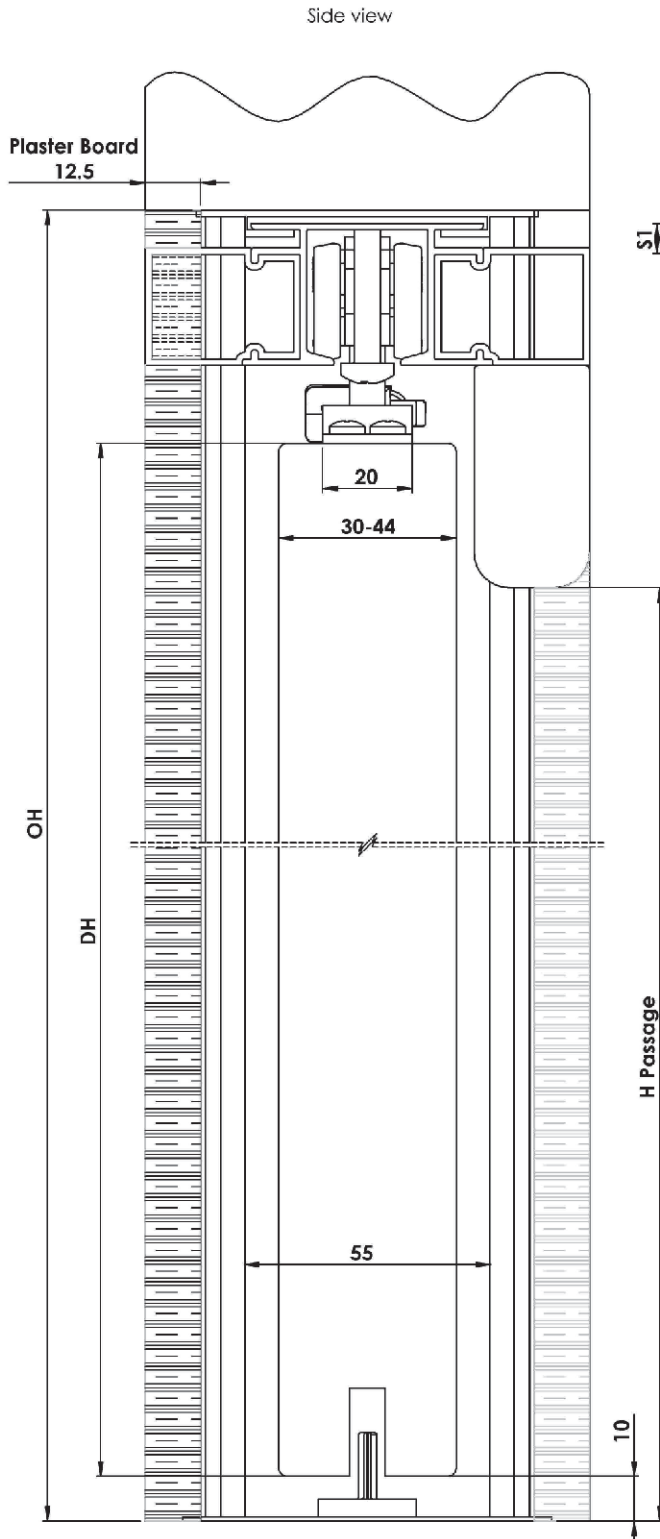
DH - Door height, 3000mm

DWi - Door width, maximum 2000mm

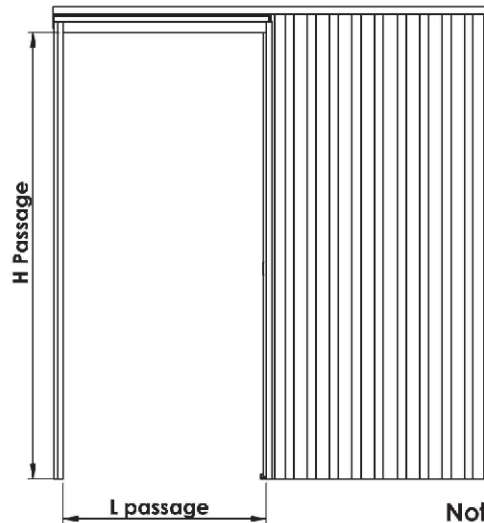
DT - Door thickness, between 30mm and 44mm

OW - Opening width

OH - Opening height



Front view
Scale 1:20

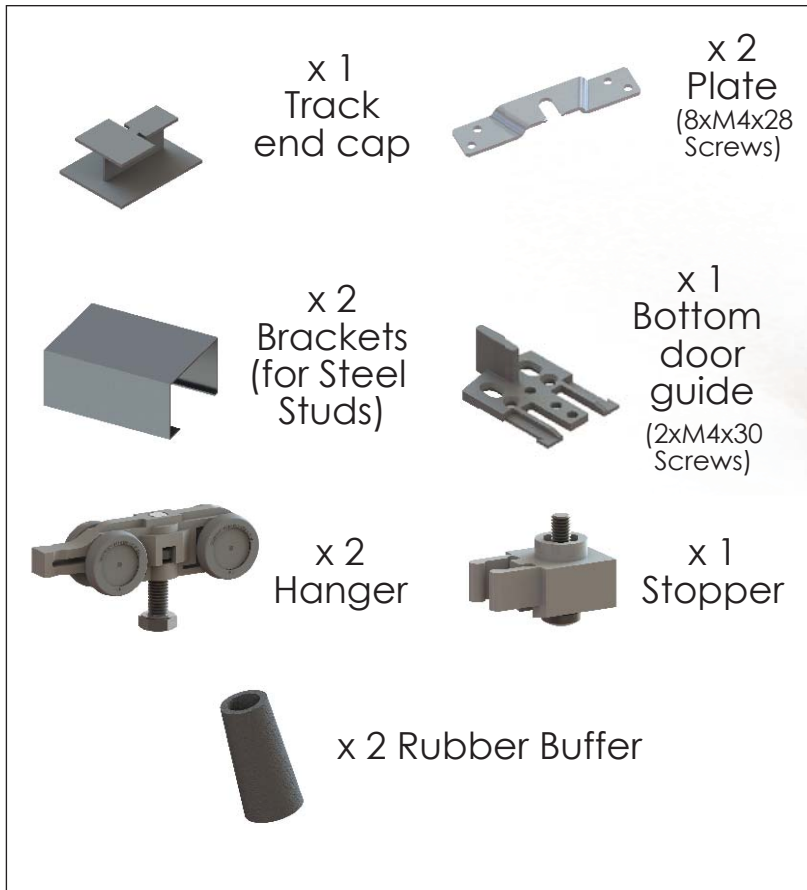


Note: Other sizes available on request

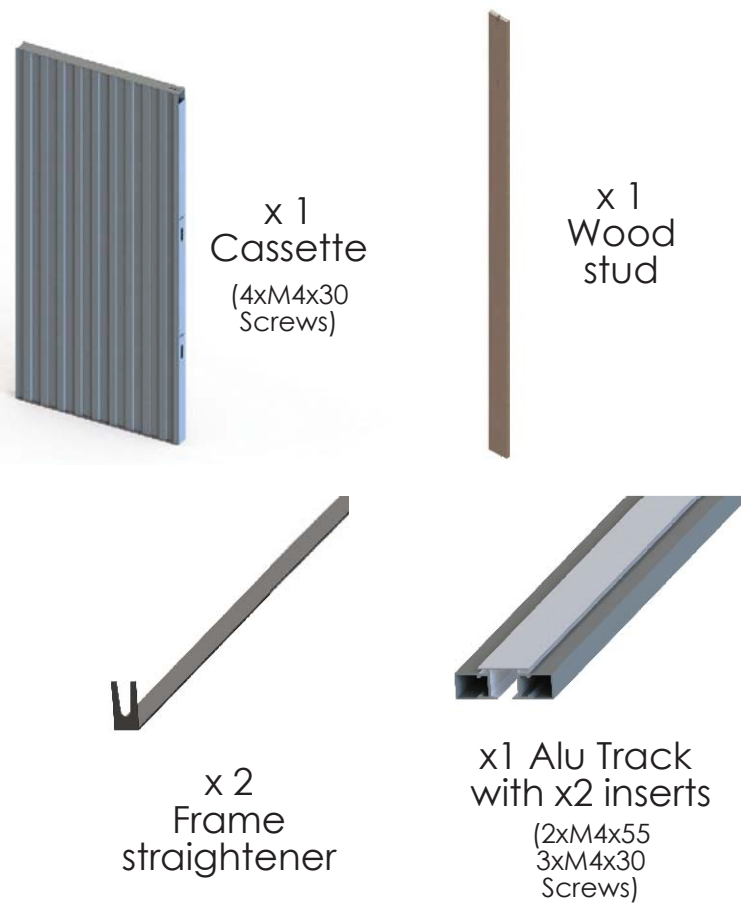
SINGLE DOOR VERSION - FINISHED WALL THICKNESS 100 OR 125 (MM)

S	S1	S3	DWi	DH	L _{passage}	H _{passage}	L	OW	OH
75	100	55	610	1981	595	1971	663	1330	2060
75	100	55	686	1981	660	1971	765	1490	2060
75	100	55	762	1981	736	1971	866	1670	2060
75	100	55	838	1981	800	1971	866	1730	2060
75	100	55	914	1981	900	1971	968	1940	2060
75	100	55	626	2040	600	2030	663	1330	2120
75	100	55	726	2040	700	2030	765	1530	2120
75	100	55	826	2040	800	2030	866	1710	2120
75	100	55	926	2040	900	2030	968	1940	2120
75	100	55	1026	2040	1000	2030	1070	2140	2120
75	100	55	1126	2040	1100	2030	1171	2340	2120
75	100	55	1226	2040	1200	2030	1272	2540	2120
100	125	80	610	1981	595	1971	663	1330	2060
100	125	80	686	1981	660	1971	765	1490	2060
100	125	80	762	1981	736	1971	866	1670	2060
100	125	80	838	1981	800	1971	866	1730	2060
100	125	80	914	1981	900	1971	968	1940	2060
100	125	80	626	2040	600	2030	663	1330	2120
100	125	80	726	2040	700	2030	765	1530	2120
100	125	80	826	2040	800	2030	866	1740	2120
100	125	80	926	2040	900	2030	968	1940	2120
100	125	80	1026	2040	1000	2030	1070	2140	2120
100	125	80	1126	2040	1100	2030	1171	2340	2120
100	125	80	1226	2040	1200	2030	1272	2540	2120

Components Pack



Frame Parts

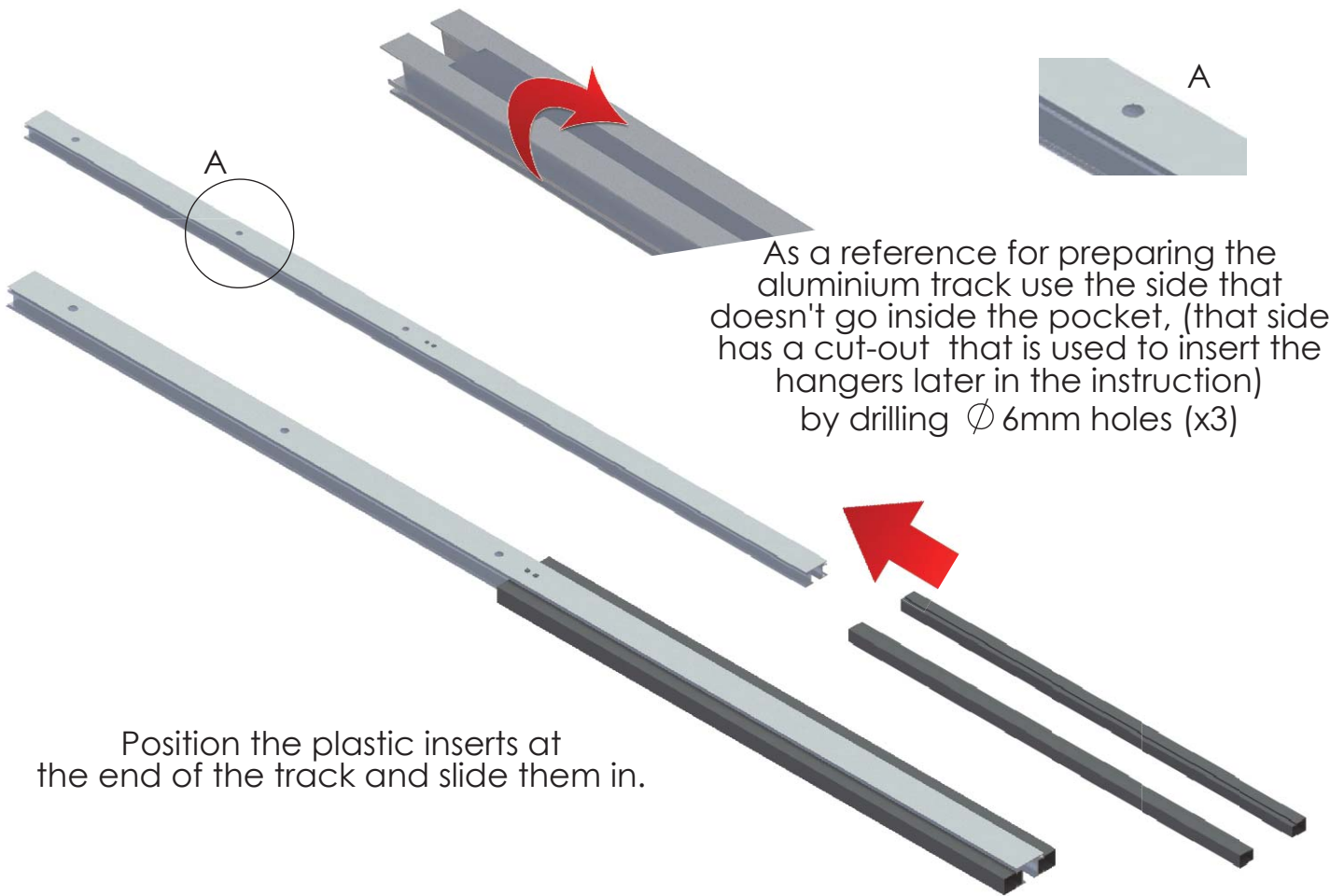


Components packed in the jamb kits

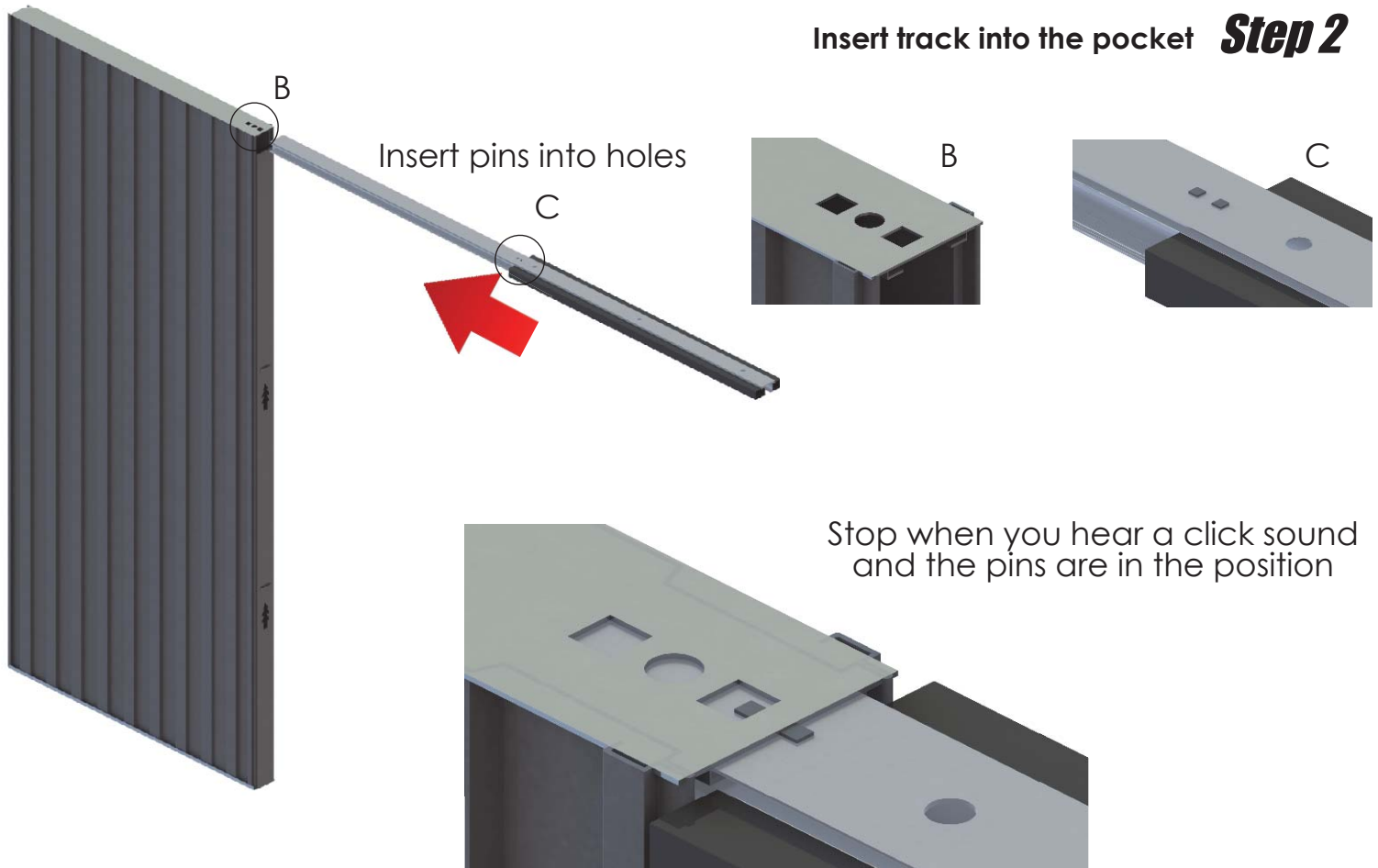


POCKET FRAME PREPARATION

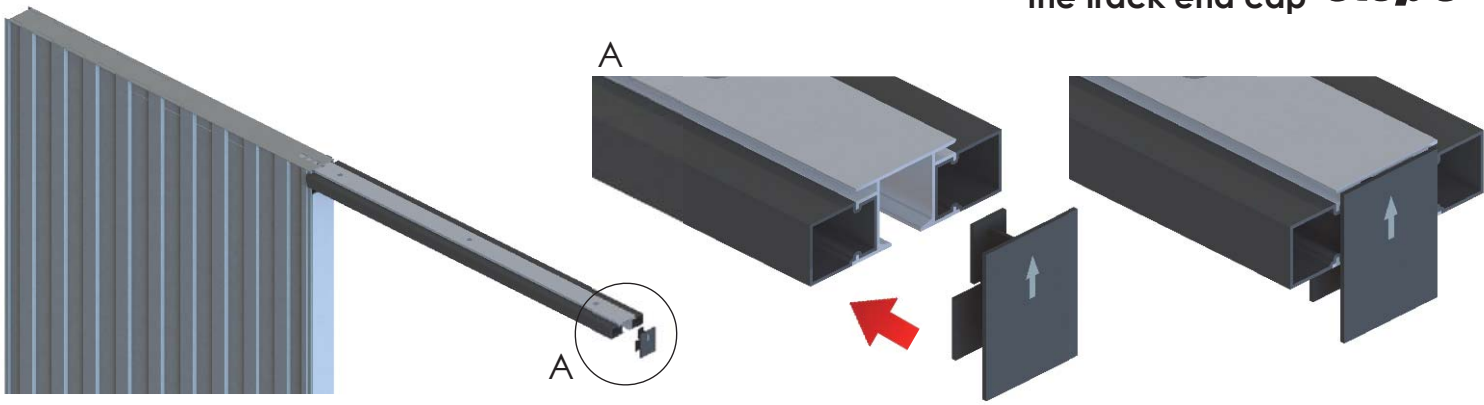
Prepare Aluminium Track **Step 1**



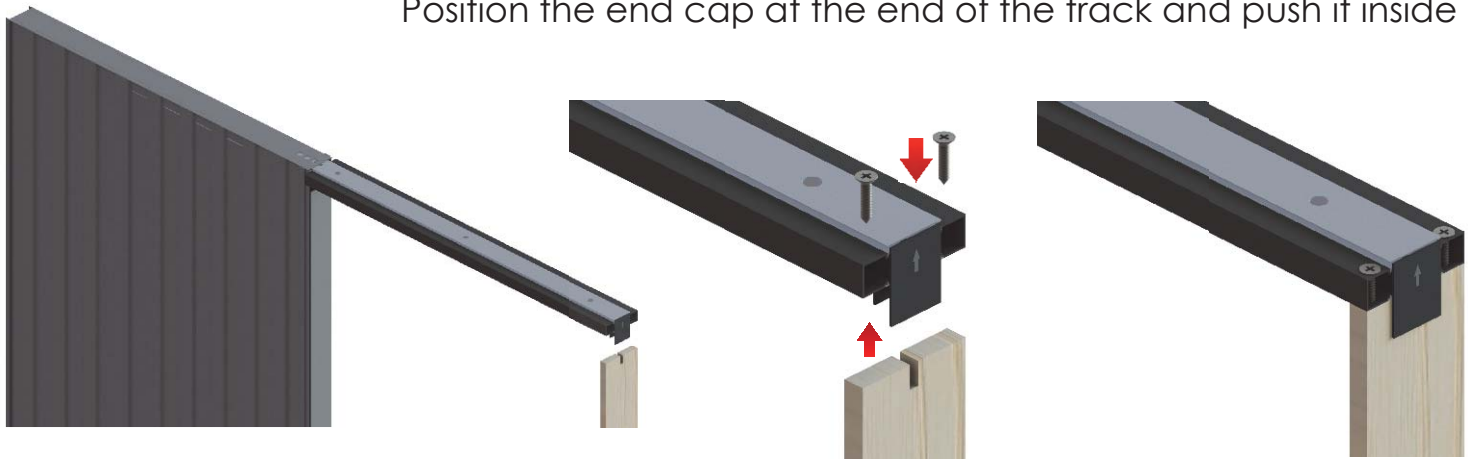
Insert track into the pocket **Step 2**



Mount the wood stud and the track end cap **Step 3**

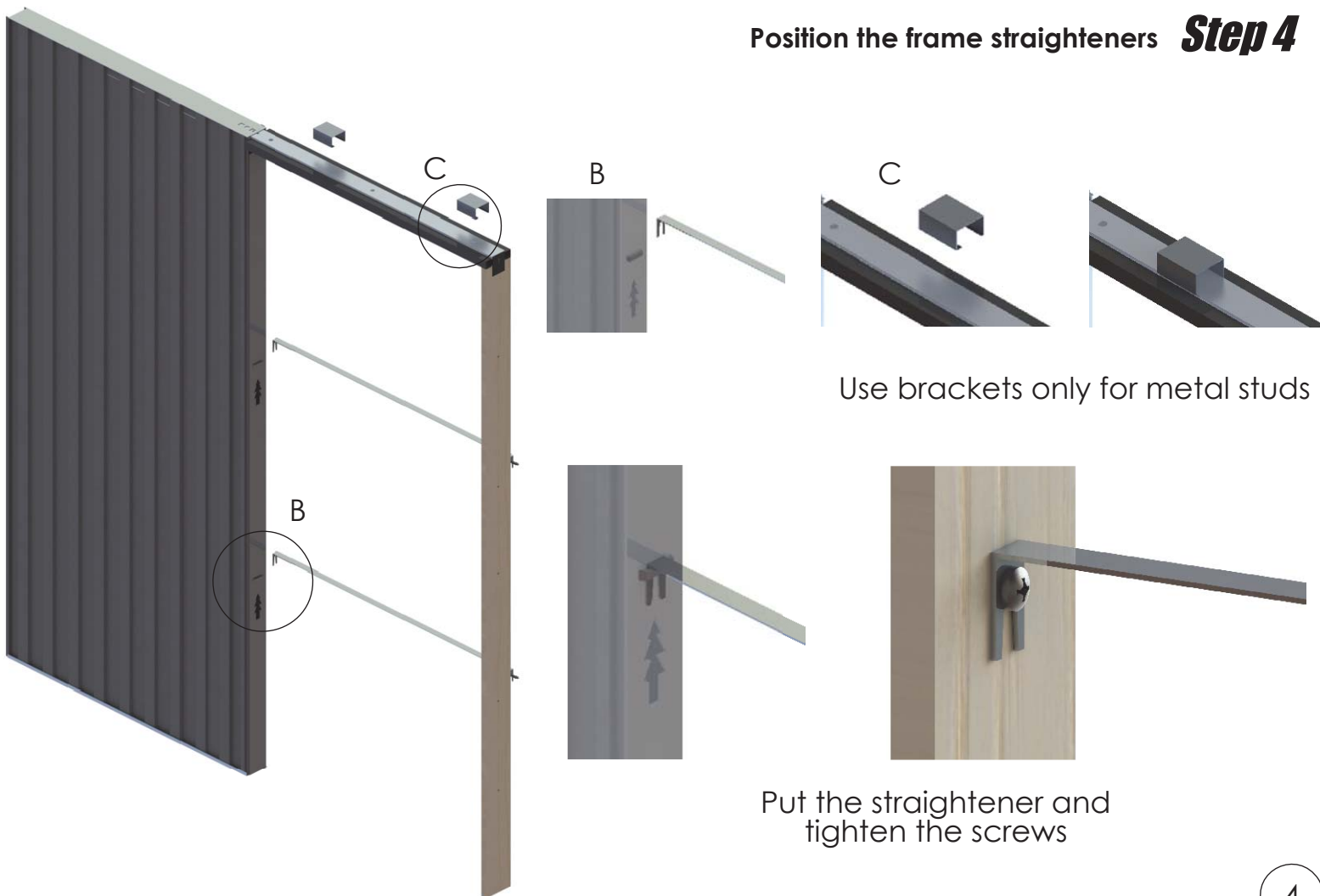


Position the end cap at the end of the track and push it inside



Position the wood stud under the end cap, push it fully in and secure it with screws (2xM4x55 supplied)

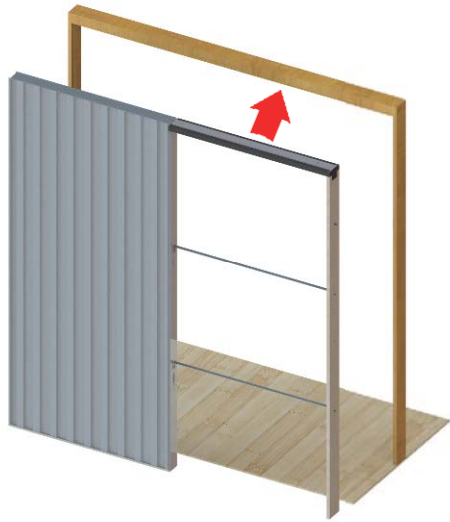
Position the frame straighteners **Step 4**



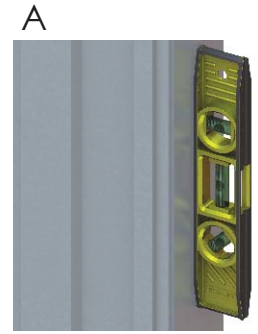
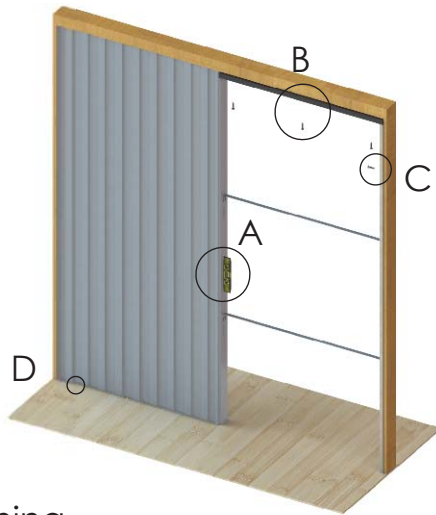
Use brackets only for metal studs

Put the straightener and tighten the screws

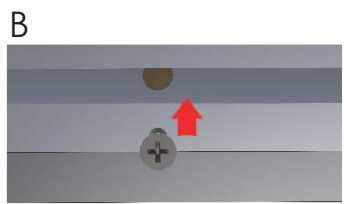
Pocket frame installation in the opening **Step 5**



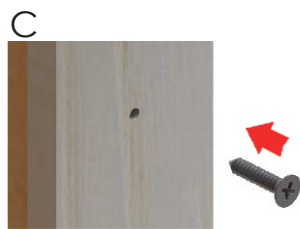
Insert pocket frame into the opening



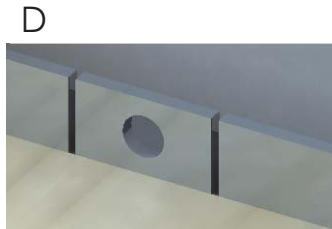
Ensure the frames level



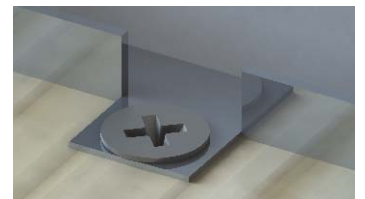
Secure the track with screws (3xM4x30 supplied)



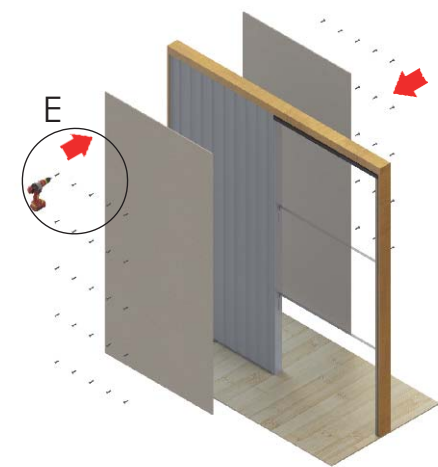
Secure the stud with screws



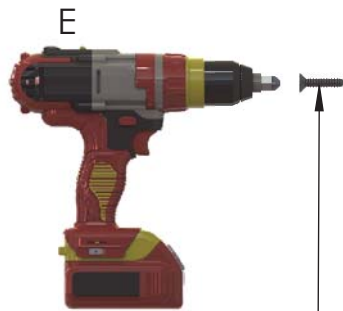
Bend the fixing lugs and



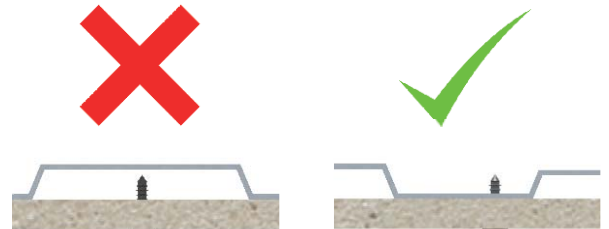
Secure the pocket with 2 screws on each side



(15mm plaster board screws supplied)



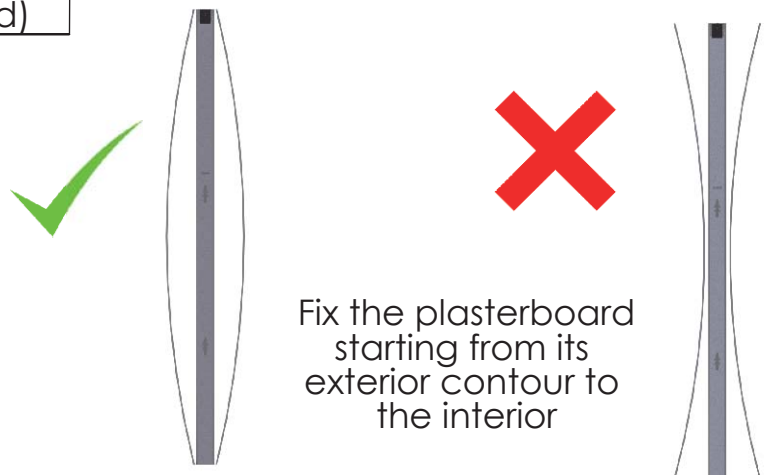
Plaster board installation **Step 6**



When plaster board is in place, before screwing, ensure that the screws are inserted only where corrugated ribbing touches the plaster board.



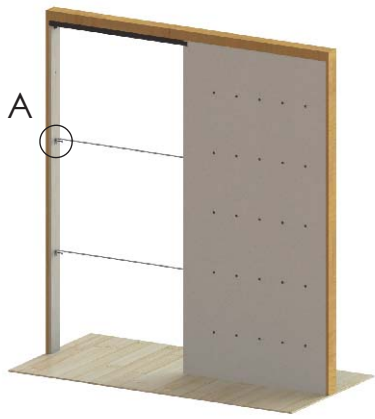
Plaster board installed



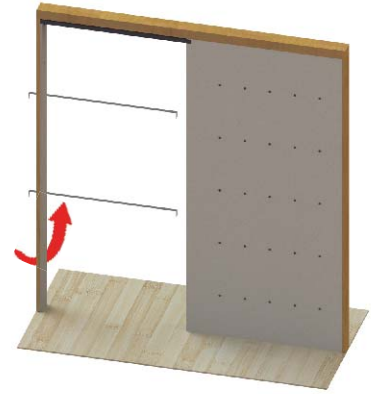
Fix the plasterboard starting from its exterior contour to the interior

DOOR PREPARATION AND INSTALLATION

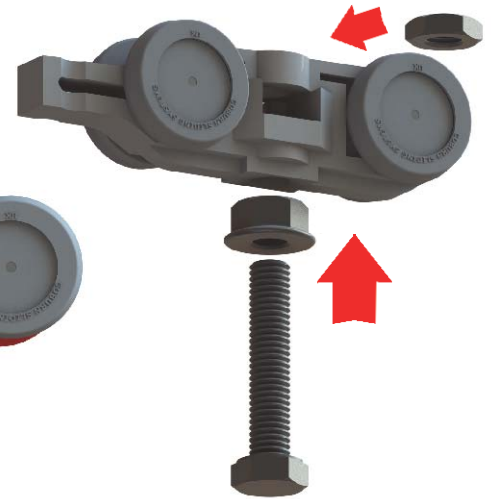
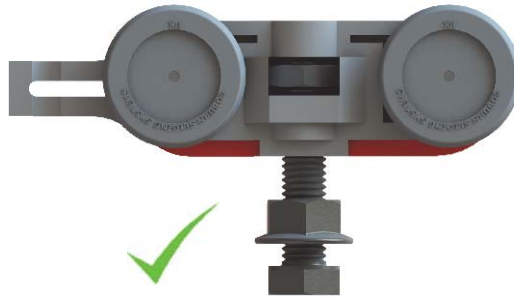
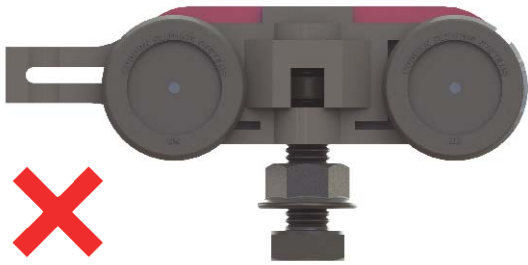
Prepare the hangers **Step 1**



Remove the frame straighteners

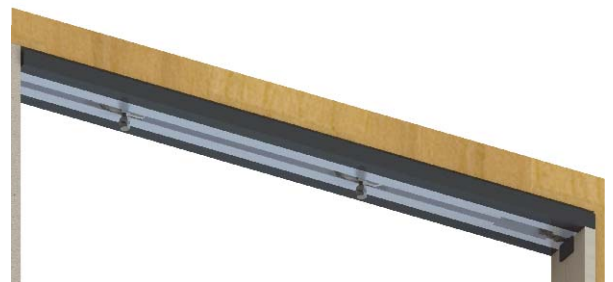
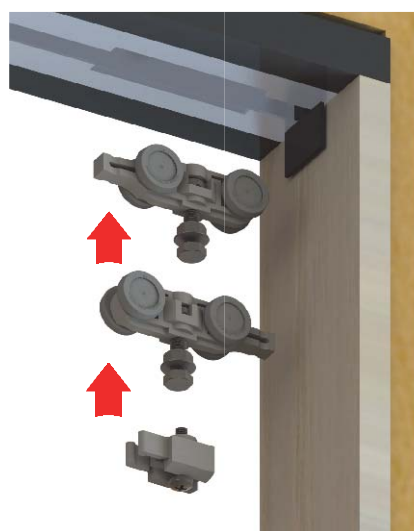
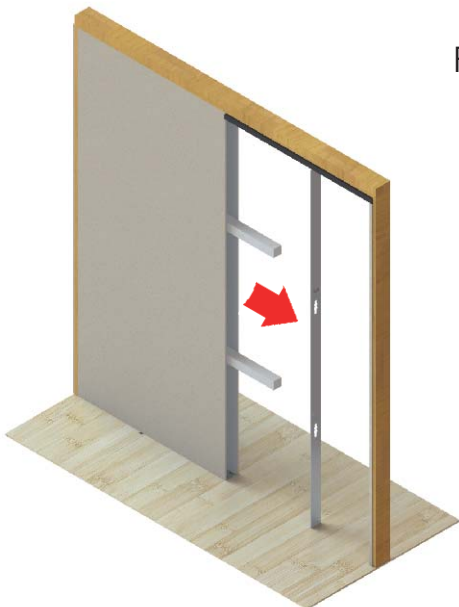


- Insert the nut in the body of the hanger
- Insert the bolt with the flange nut into the nut



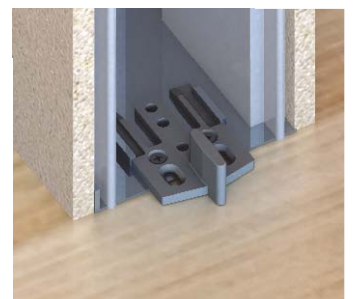
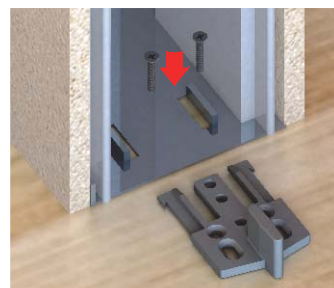
Insert the hangers, stopper and the bottom guide **Step 2**

Remove the cassette cover and the polystyrene blocks, then clean inside the pocket frame thoroughly

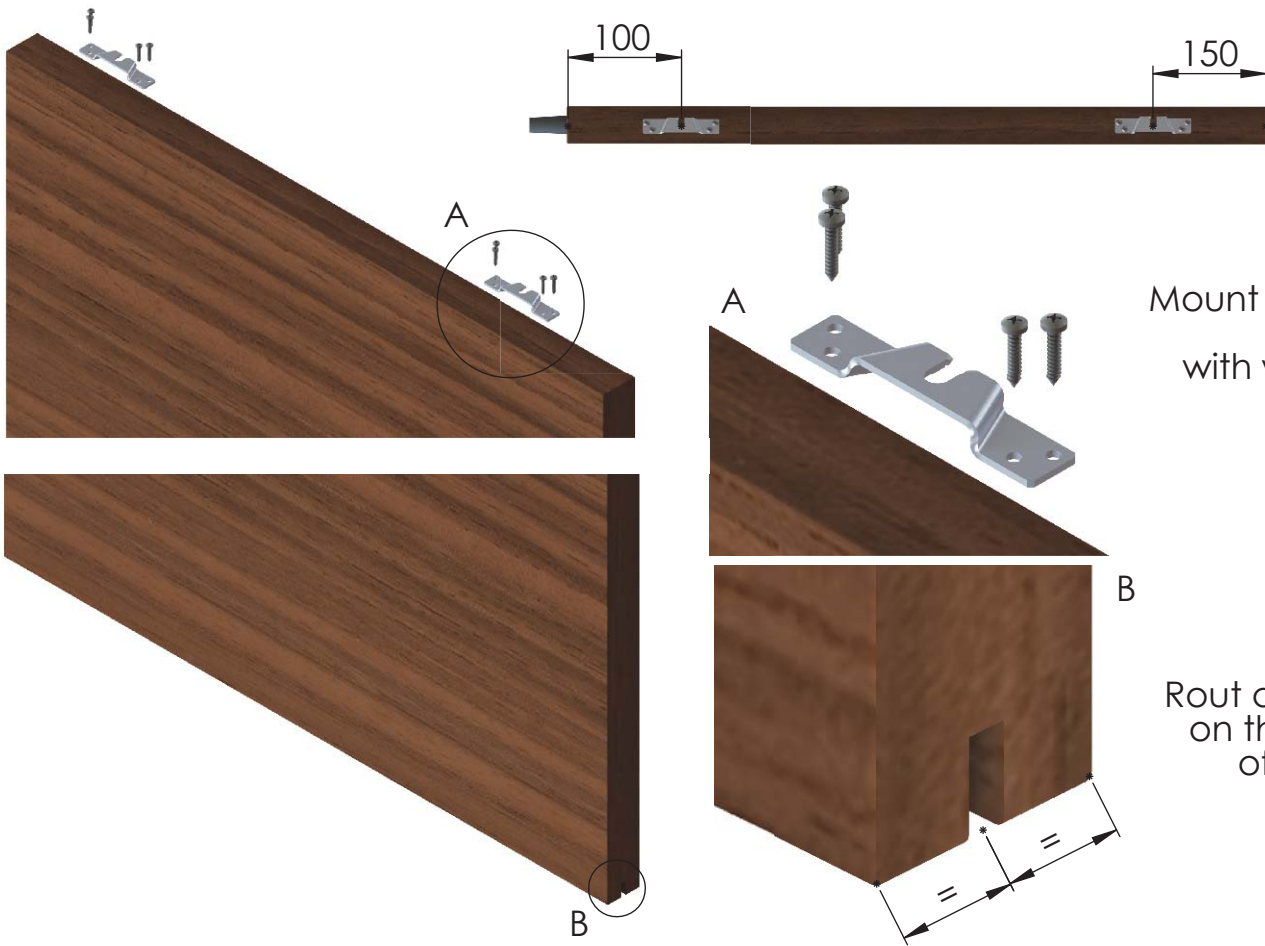


Insert both hangers and the stopper into the track

Slide the guide between the two pins and secure it with screws



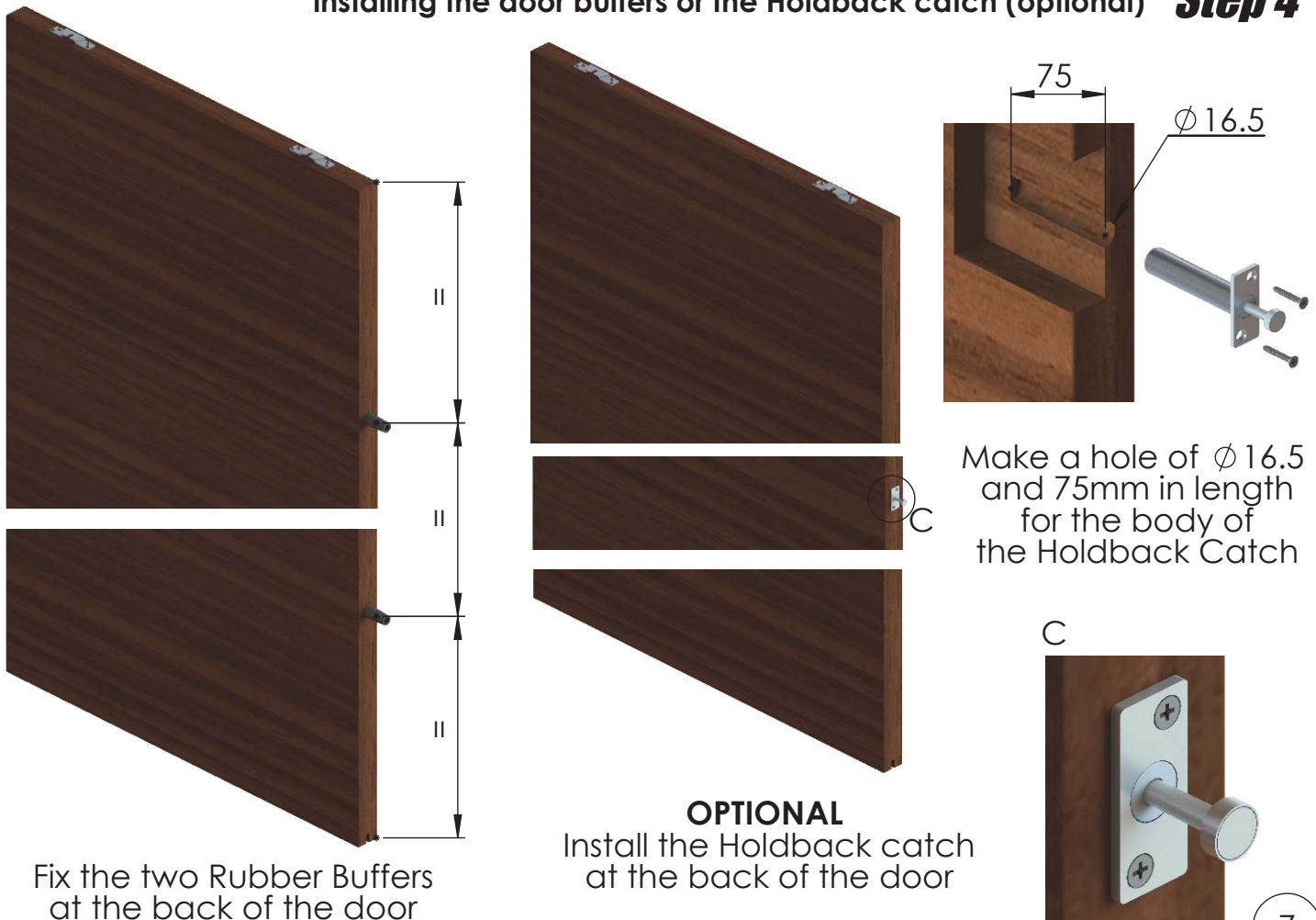
Preparing the door, installing the hanger plates **Step 3**



Mount the plates and fix them with wood screws

Route a 6x18 mm slot on the underside of the door

Preparing the door installing the door buffers or the Holdback catch (optional) **Step 4**

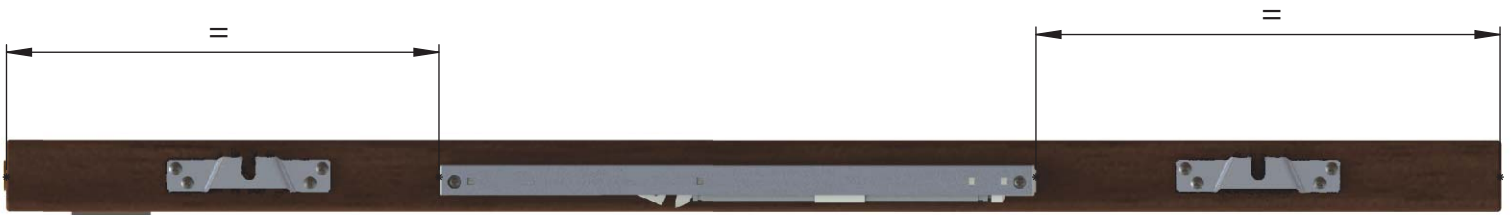
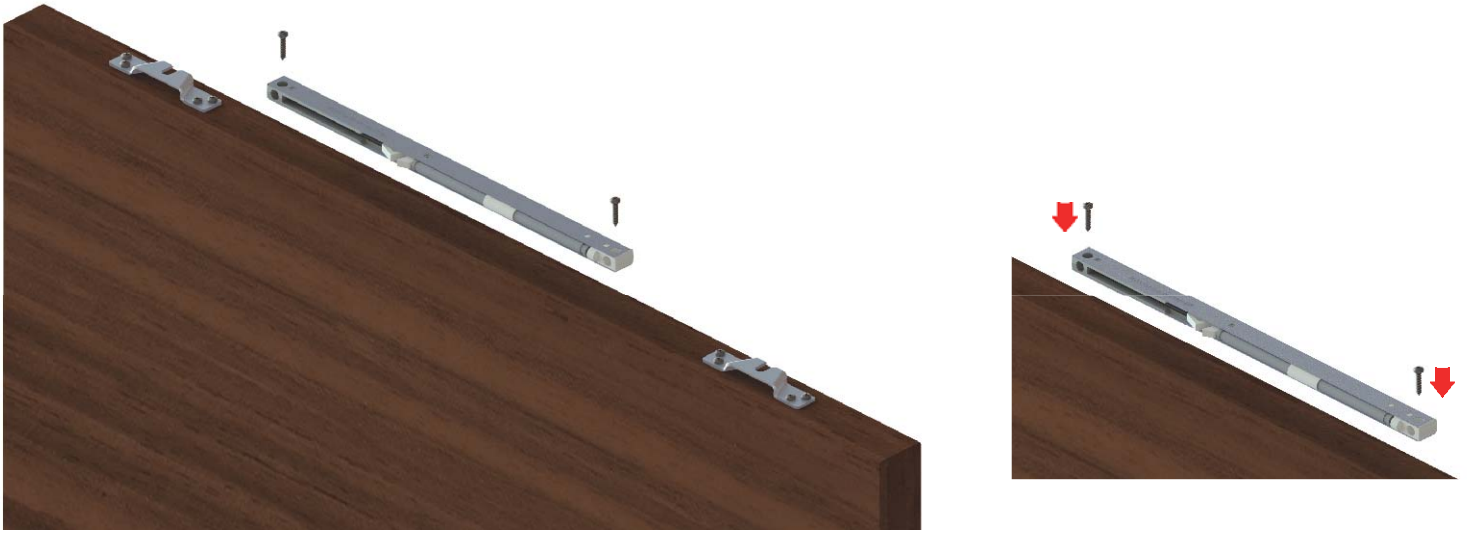


Fix the two Rubber Buffers at the back of the door

Make a hole of $\phi 16.5$ and 75mm in length for the body of the Holdback Catch

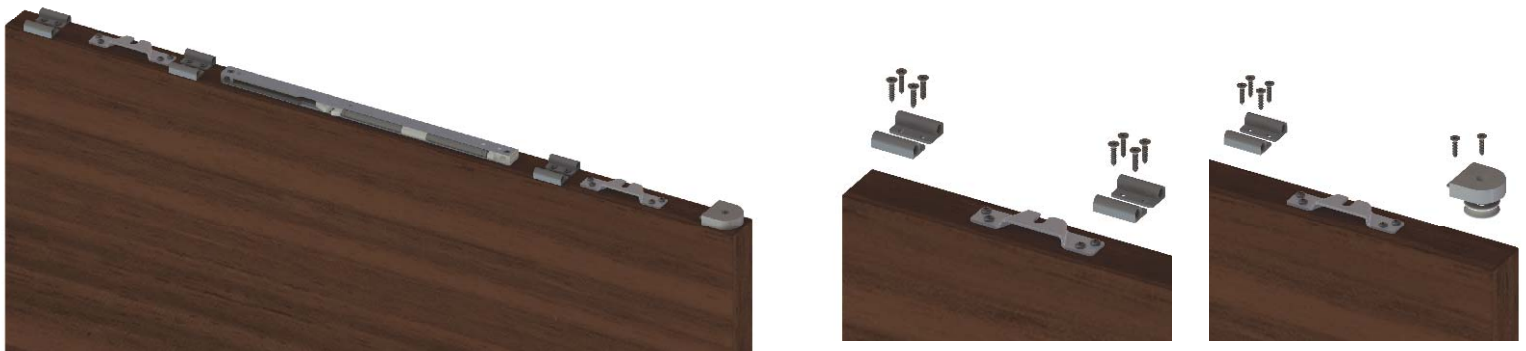
OPTIONAL
Install the Holdback catch at the back of the door

Soft closer installation (optional) **Step 5**



Fix the soft closer in the middle of the door, the trigger is facing to the opposite direction of the hanger plates

Self closer installation (optional) **Step 6**



This side goes inside the pocket

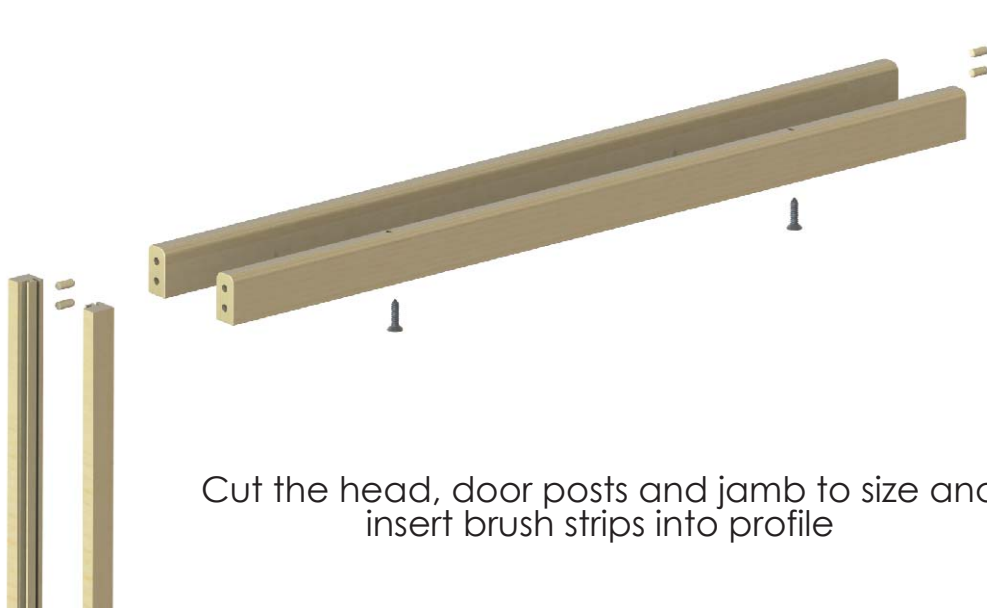
This side faces the jamb



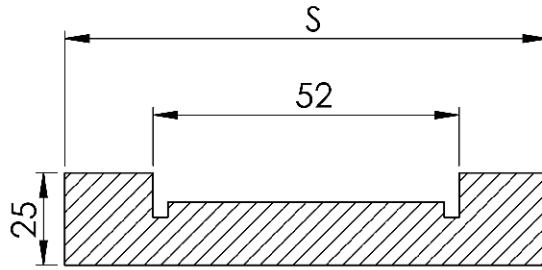
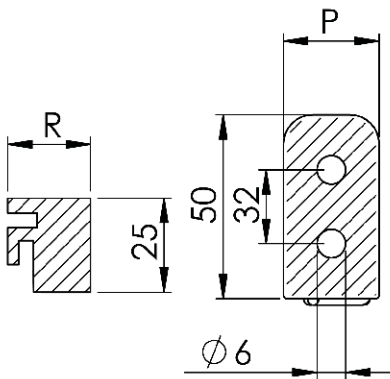
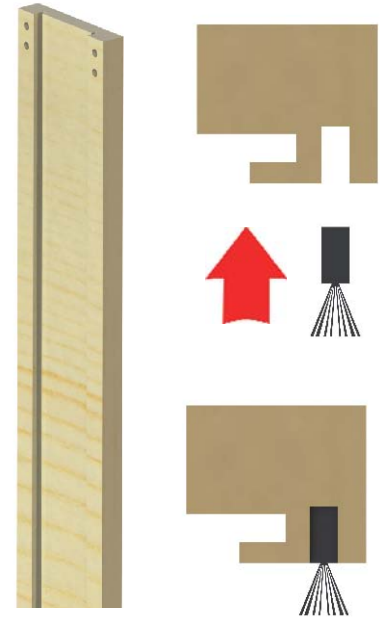
Install the self closer parts as seen on the above picture, using the instructions provided in the self closer box

JAMB INSTALLATION

Preparing the jambs *Step 1*



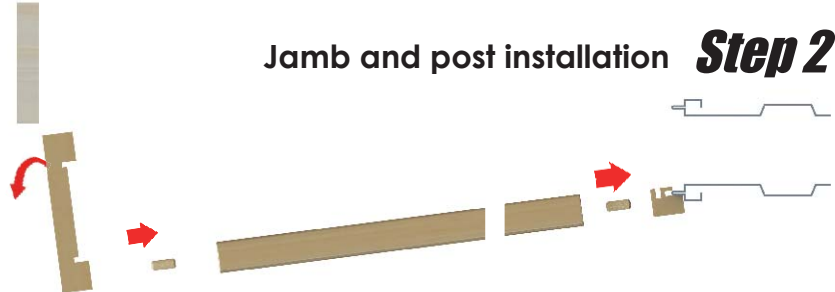
Cut the head, door posts and jamb to size and insert brush strips into profile



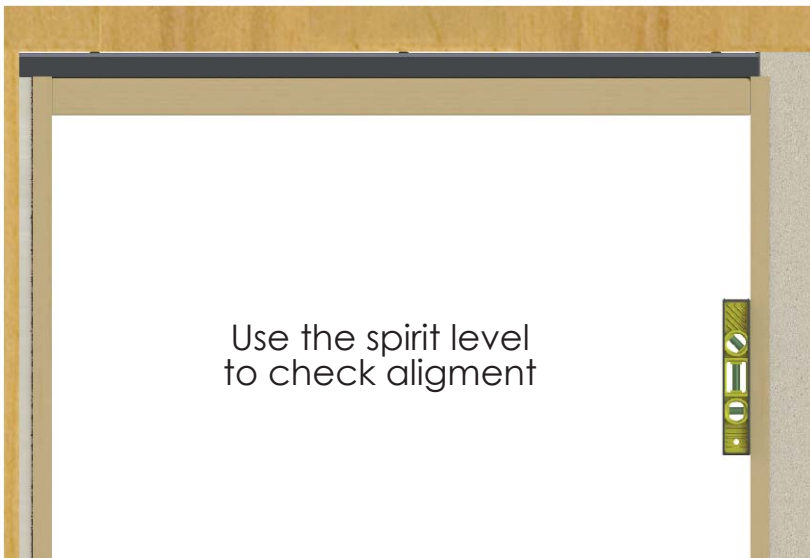
Wall Thickness	P	R	s
100 mm	26	21	100
125 mm	38	26	125



Jamb and post installation *Step 2*



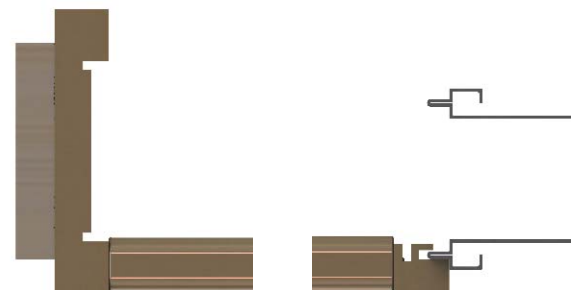
Fix the jamb, head and the door post with dowels and insert them into the frame

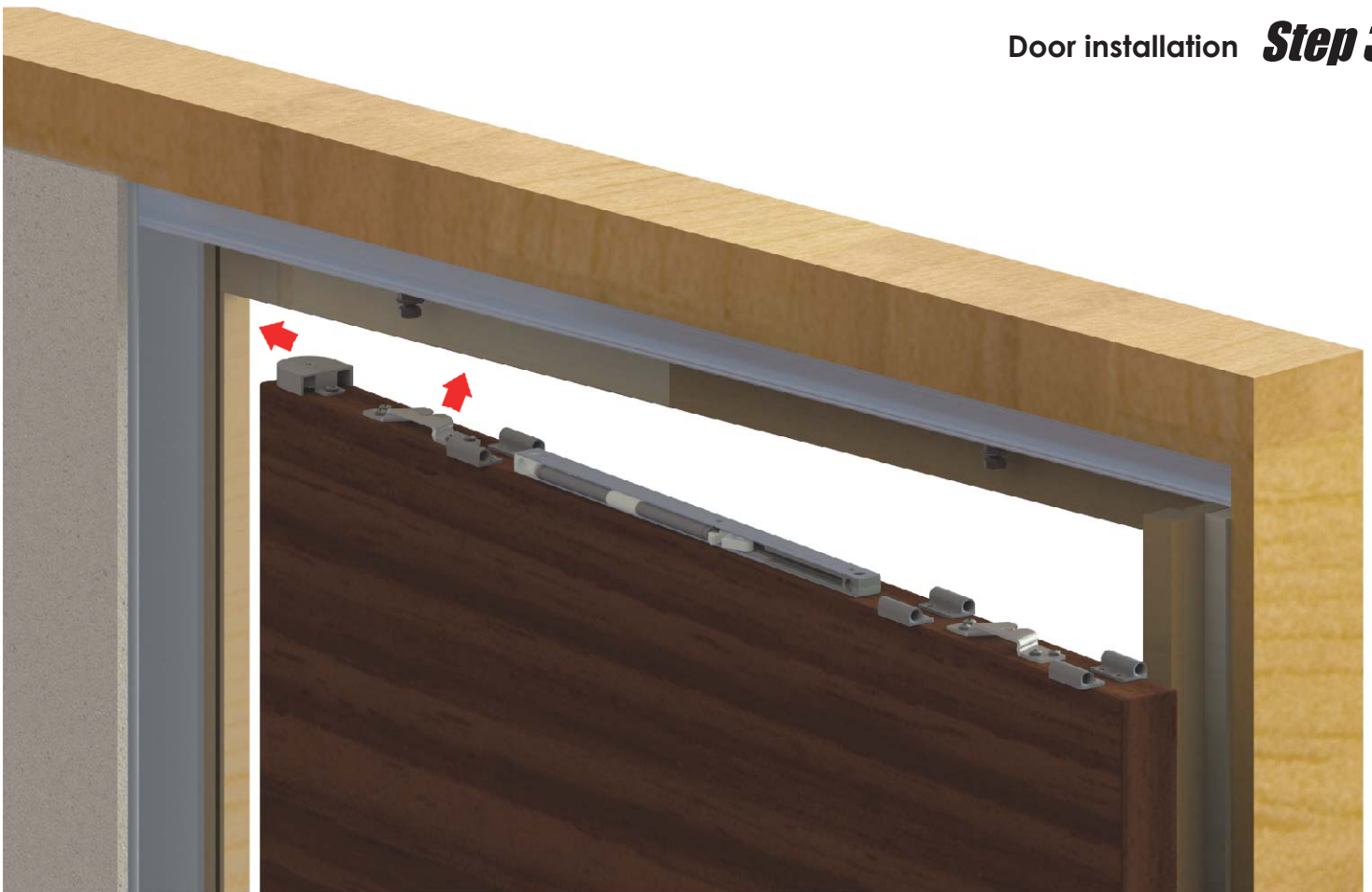


Use the spirit level to check alignment



Silicon should be used when fitting jamb, heads and architrave

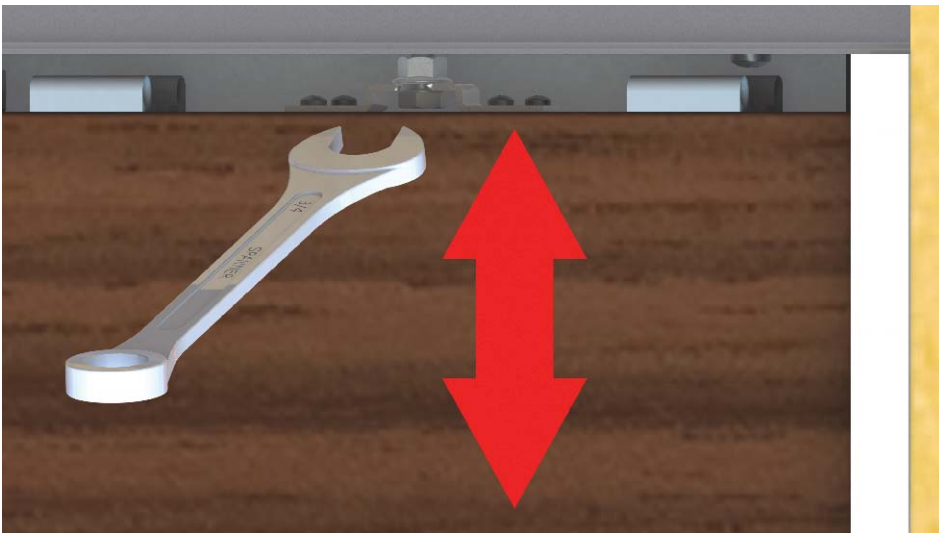




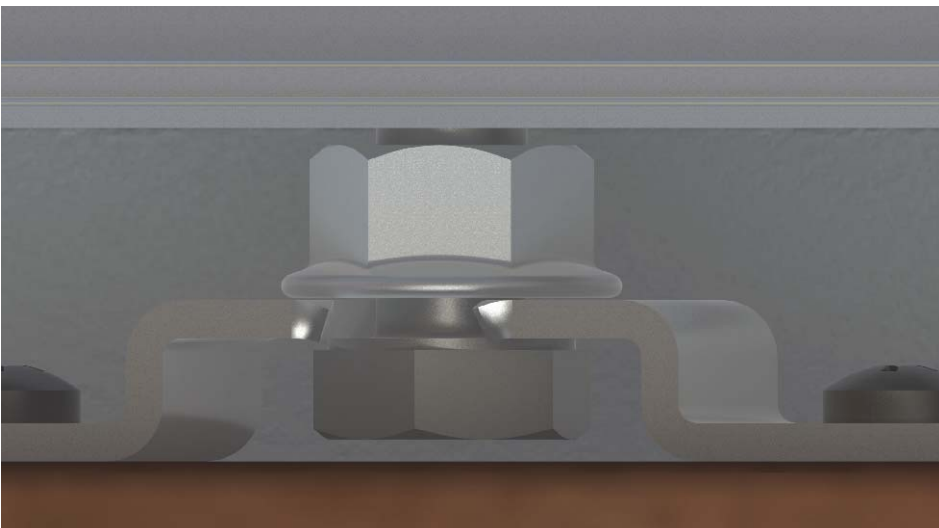
Insert the plates located on the door into the hanger bolts

Height adjustment **Step 4**

Adjust the door height with the hanger bolts



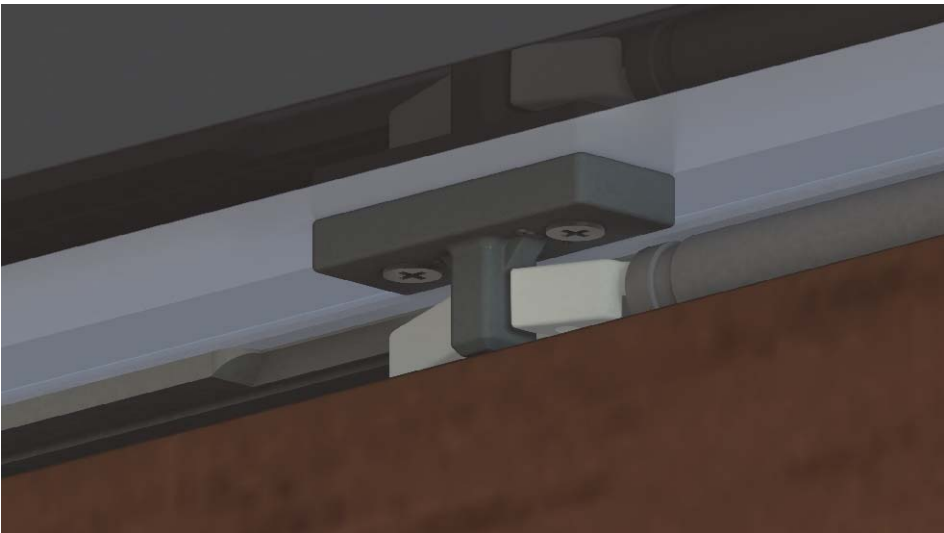
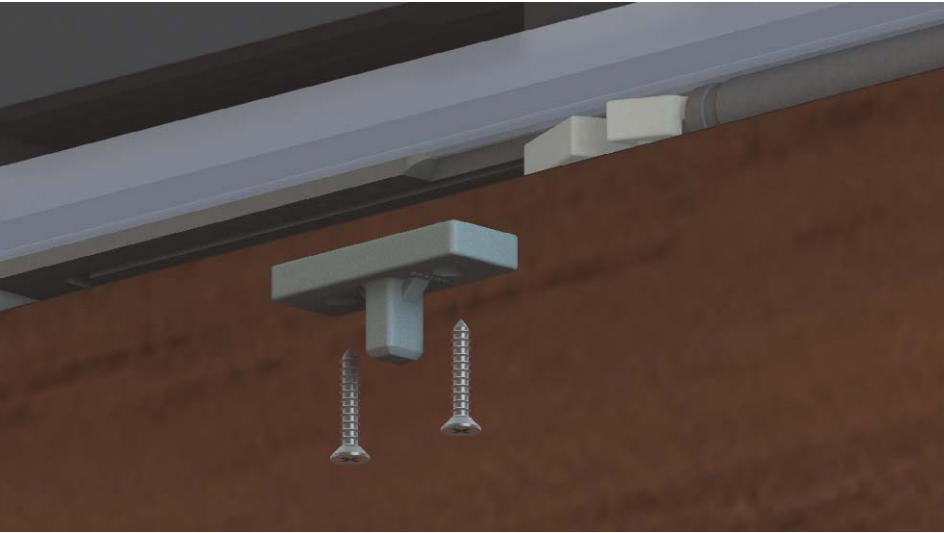
Secure the hanger by locking the nut on to the door plate



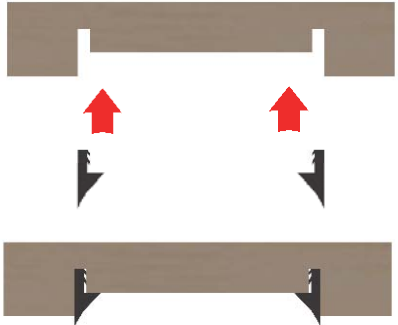
Fix the soft closer activator **Step 5**

Close the door fully and ensure trigger is released. Insert the activator inside the trigger as illustrated and mark the location

Then open the door and fix the activator on the marked location with screws

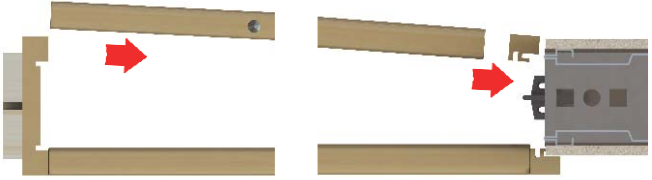
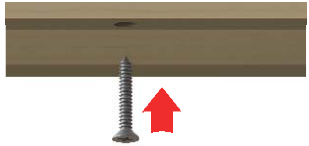


Second head and post installation **Step 6**



Put the rubber seals into position and push them fully in the cavity

Put the door post and the head into position and fix the head with screws





Fitting instructions



Coburn Sliding Systems Limited

Unit 1, Cardinal West, Cardinal Way,

Godmanchester, PE29 2XN, United Kingdom

Phone: +44 (0)20 8545 6680

E-mail: sales@coburn.co.uk

www.coburn.co.uk