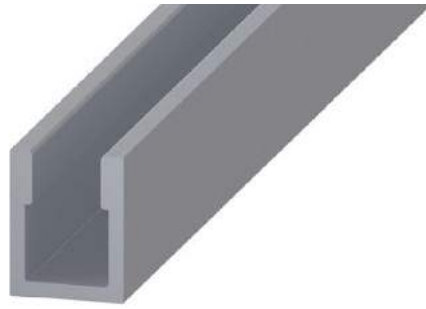


FITTING INSTRUCTIONS FOR FOLDASIDE 50

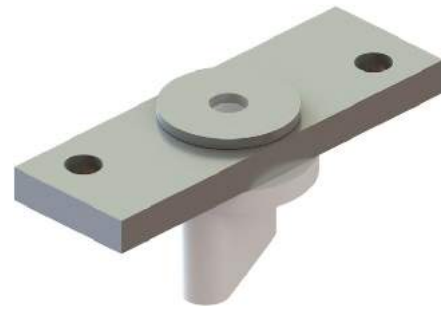
COMPONENTS



18020/24/30/36/40/60
Anodized Aluminium Track



41224/36/60
Bottom Channel



41346
Bottom guide



01821
4 Wheel
intermediate
hanger set



01822
2 Wheel end
hanger set



95519
Top & Bottom
pivot assembly



95548
3 Hinge Set, SS

Technical Specifications

Maximum door weight: 50kg

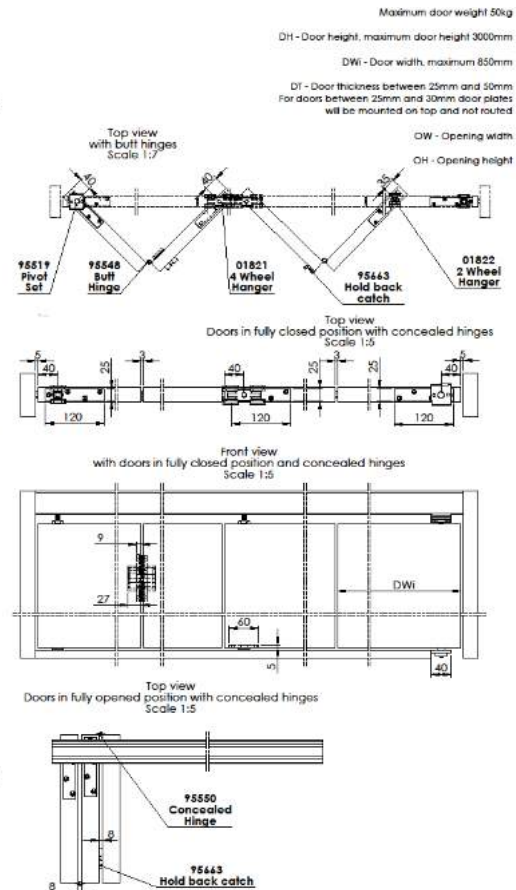
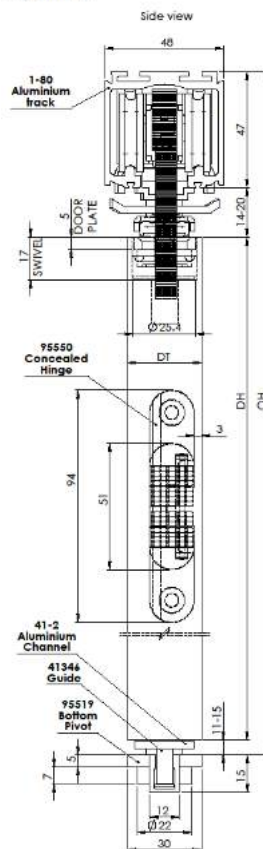
Maximum door width: 850mm

Maximum door height: 3000mm

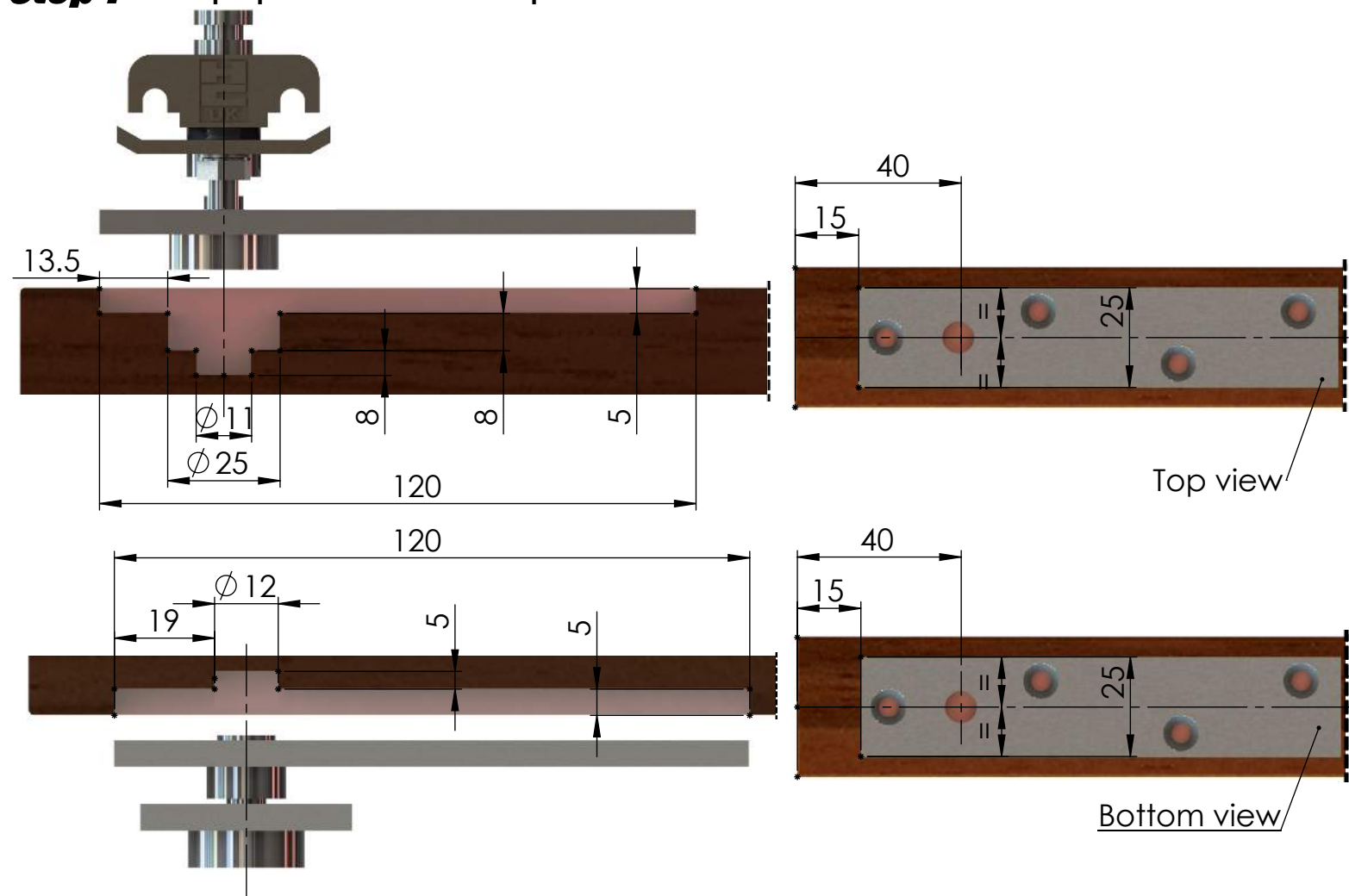
Door Thickness: 30 – 50mm

Track Dimensions:
48mm (w) x 47mm (h)

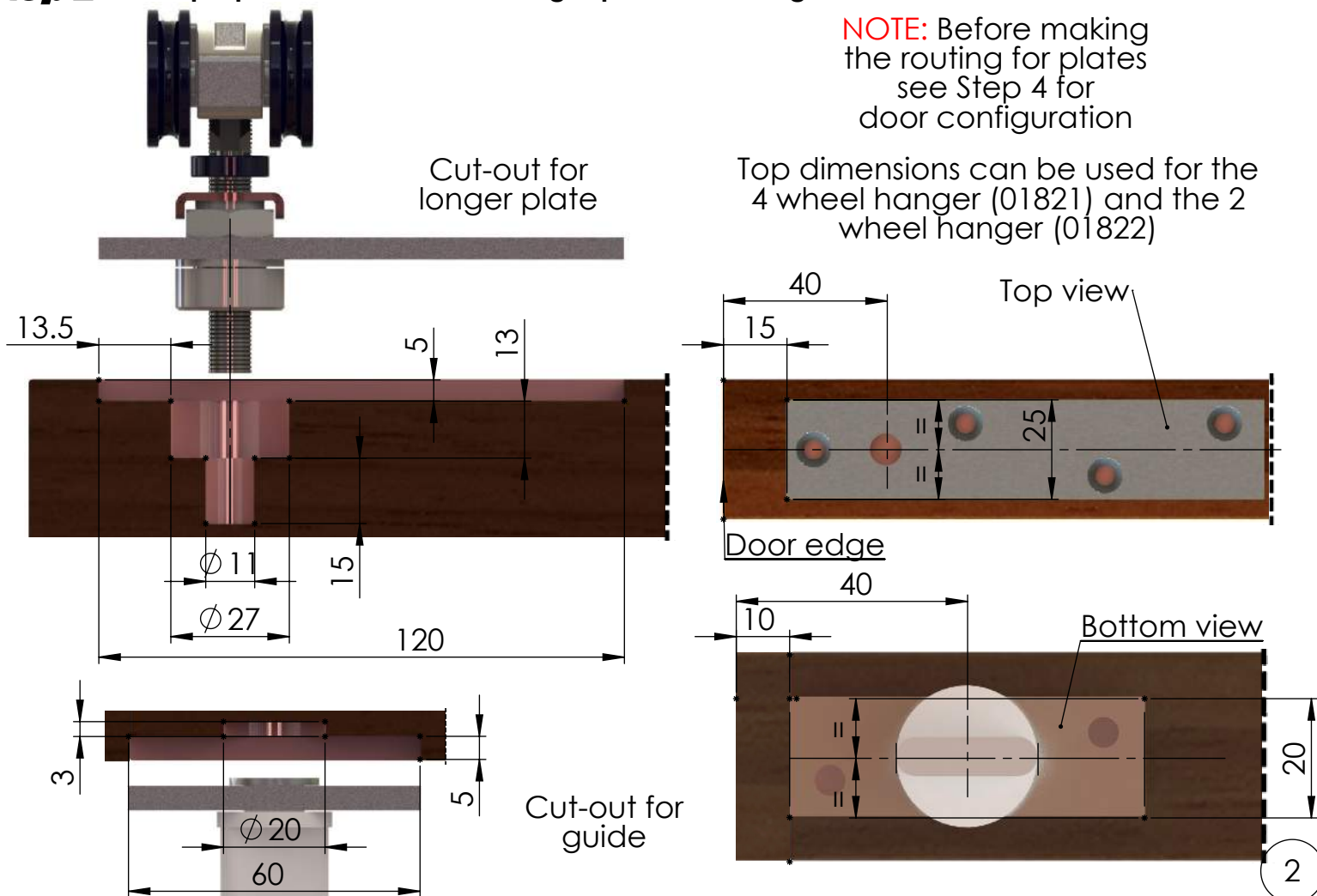
Foldaside 50



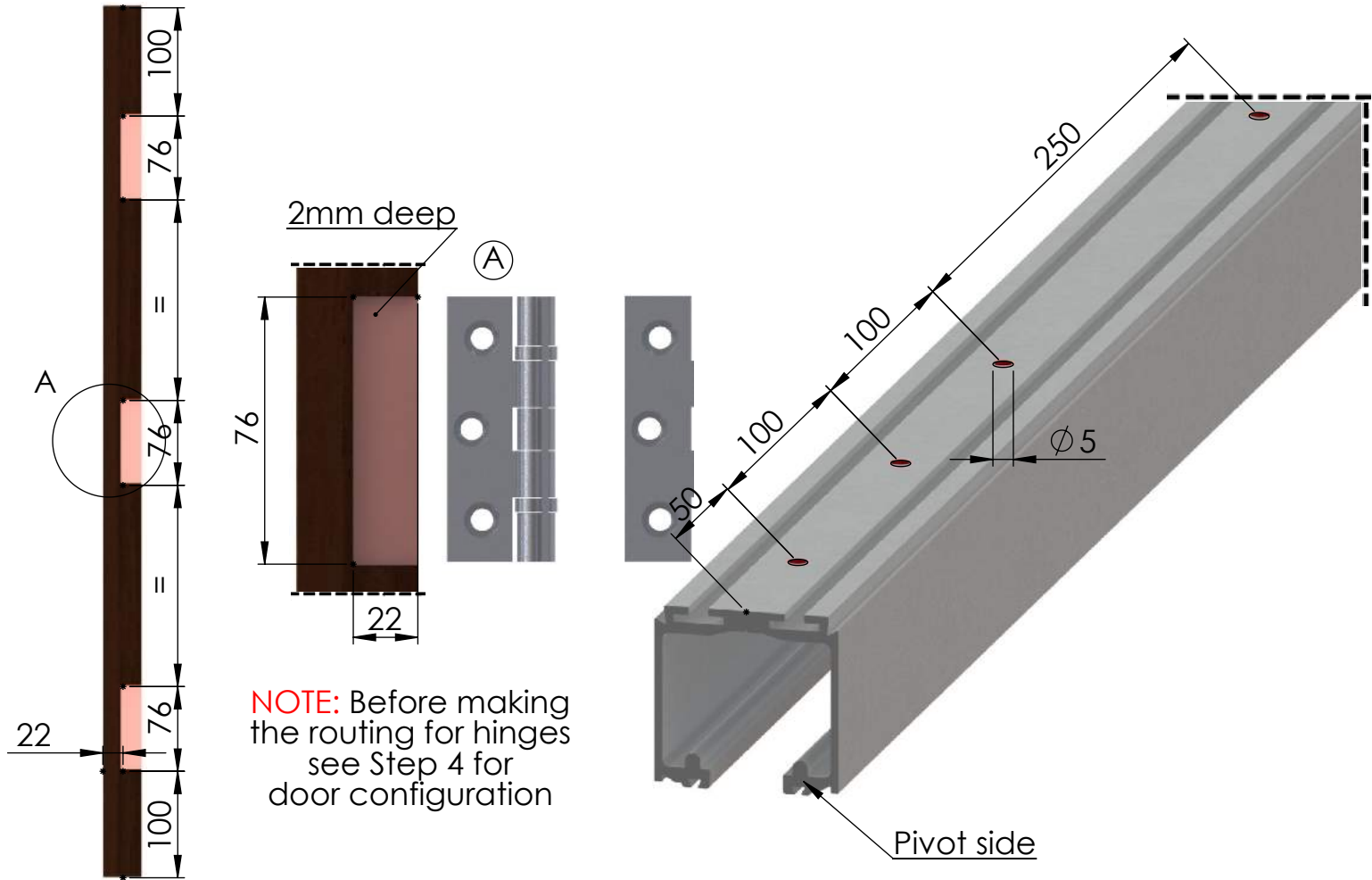
Step 1 Door preparation: cut-out for pivots



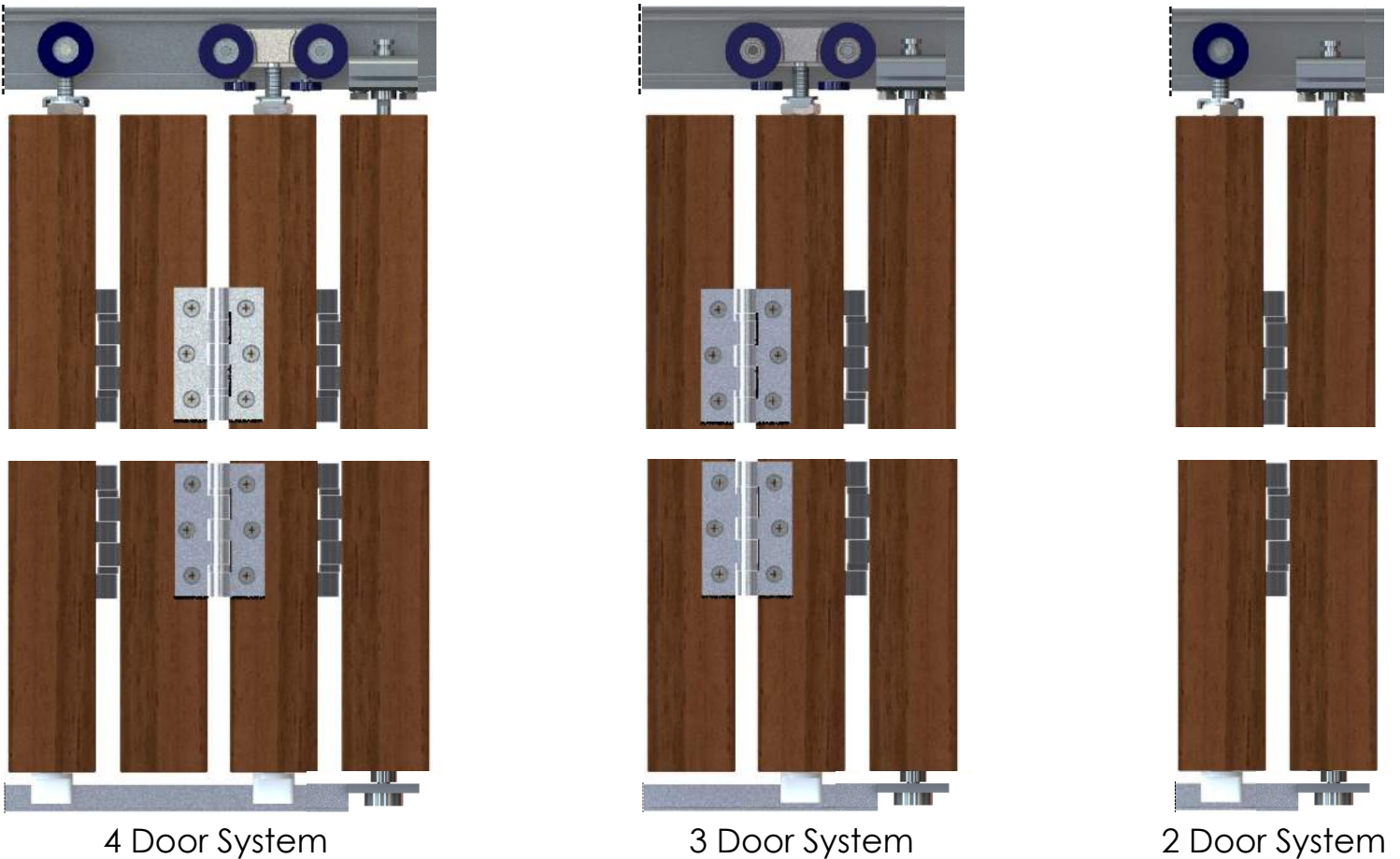
Step 2 Door preparation: cut-out for longer plate and hanger



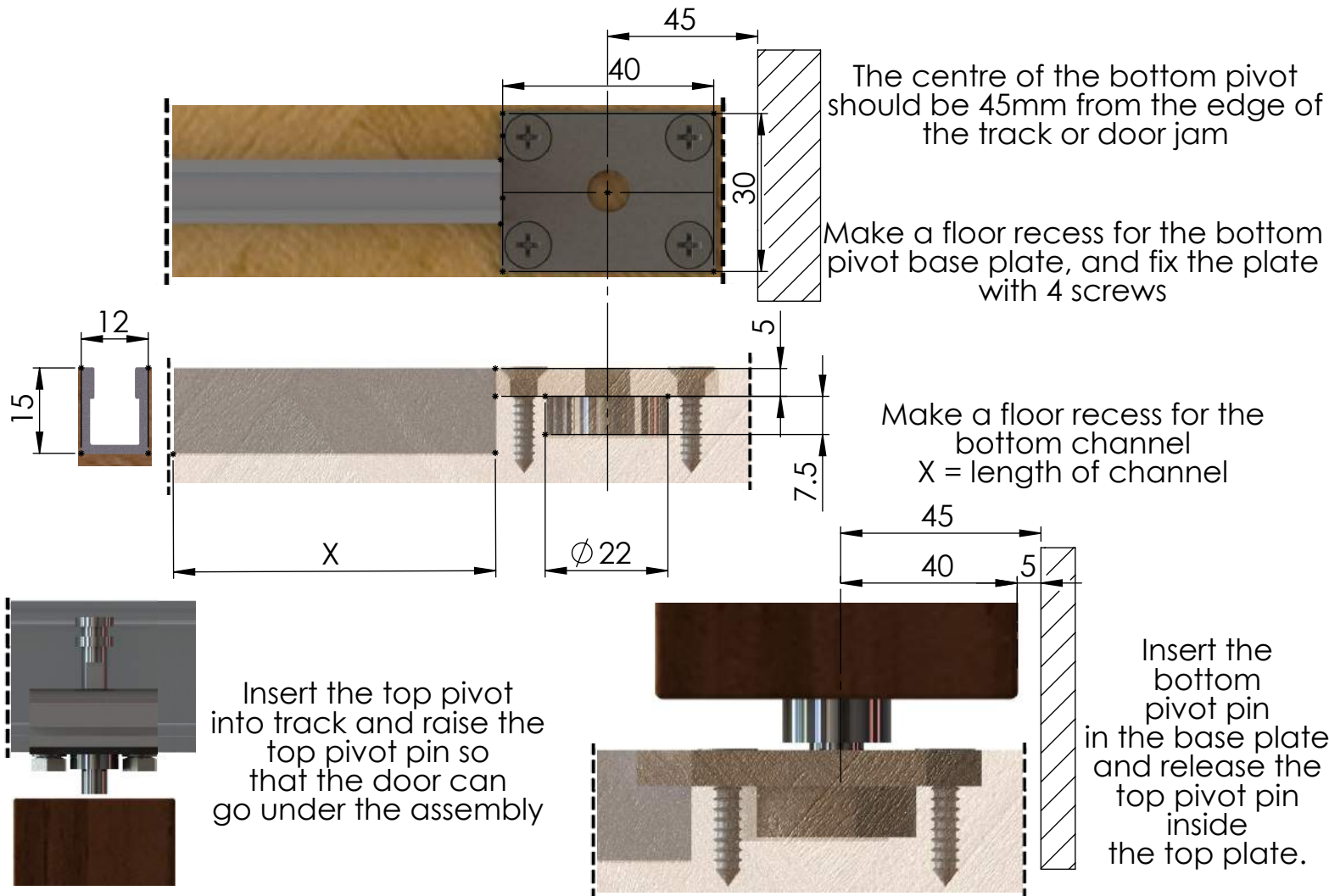
Step 3 Preparing the door and track



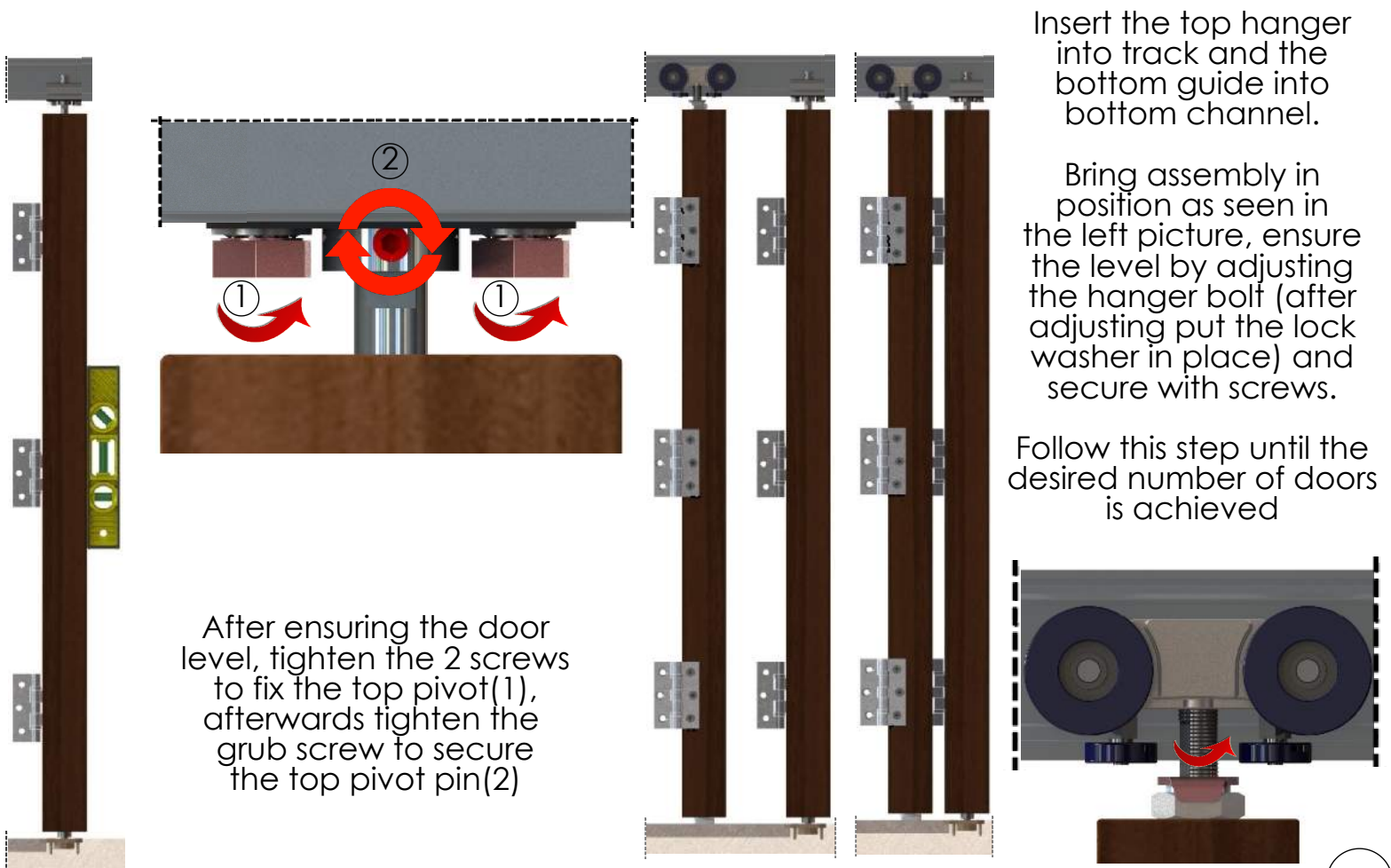
Step 4 Door configurations



Step 5 Mounting the floor channel and bottom pivot base



Step 6 Leveling the door and inserting the next leaf



Step 7 Installation of the hold back catch

Swing Door



95612 -
Flush
handle

95663 -
Hold
back
catch

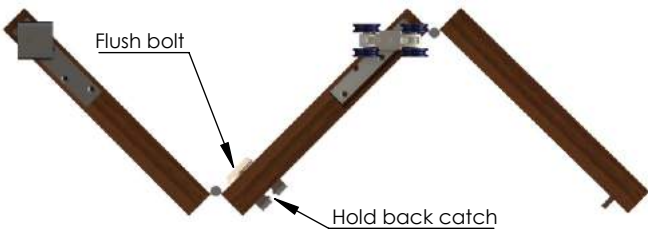
Middle Door



NOTE:

A hold back catch is compulsory for 3 door or 5 door configurations.

Step 8 Installation of the flush bolt and cut-out details



Flush bolt

Hold back catch

Front View Detail



150

Flush bolt

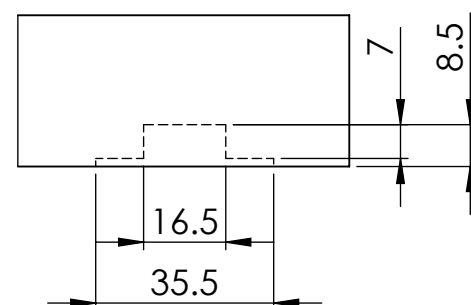
Keep plate

35.5

NOTE:

A flush bolt is compulsory if the bottom channel is not being used.

Top View Detail



16.5

35.5

7

8.5



Unit 1, Cardinal West,
Cardinal Distribution Park,
Godmanchester,
Huntingdon,
Cambridgeshire, PE29 2XN

Tel: +44 (0) 20 8545 6680

www.coburn.co.uk