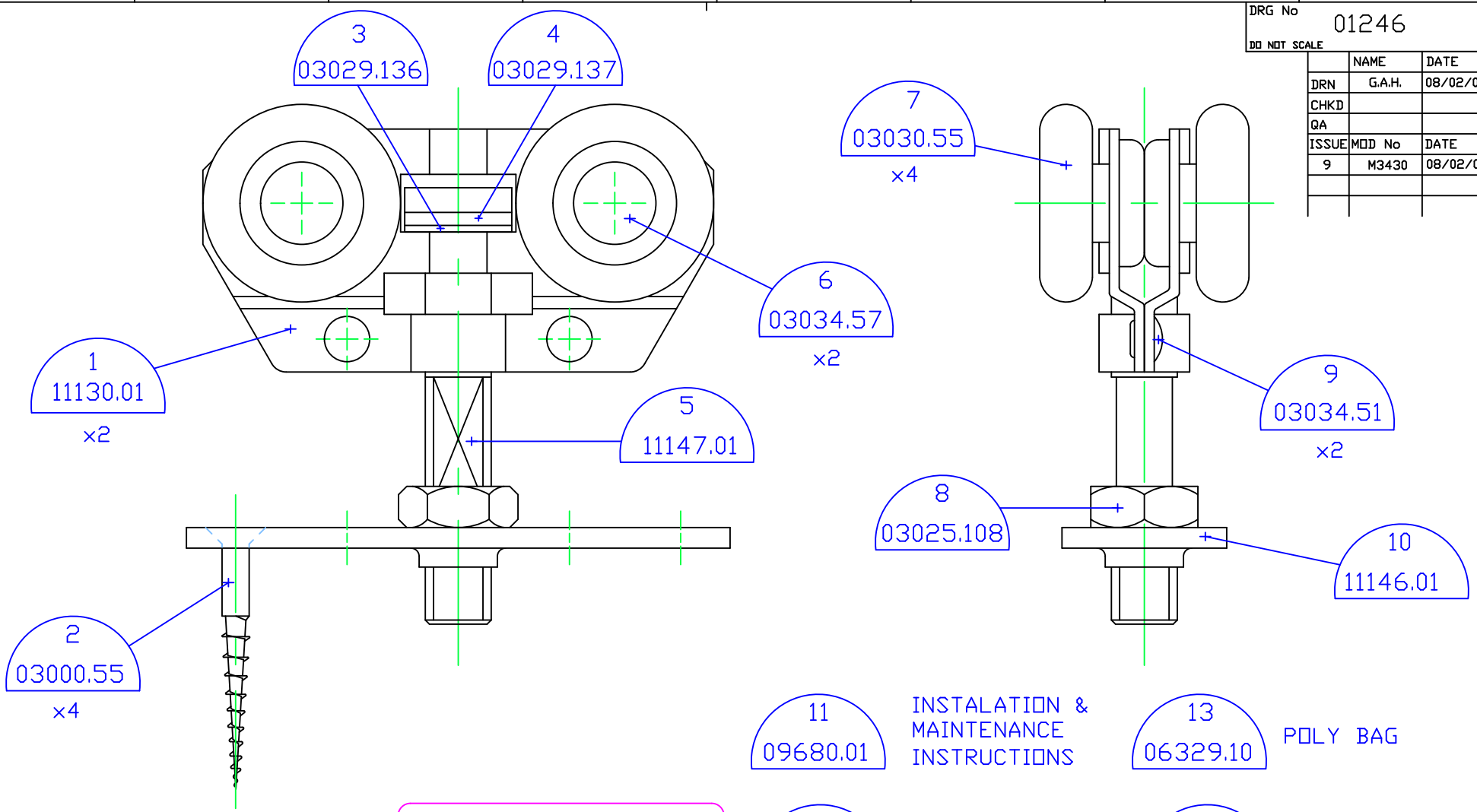
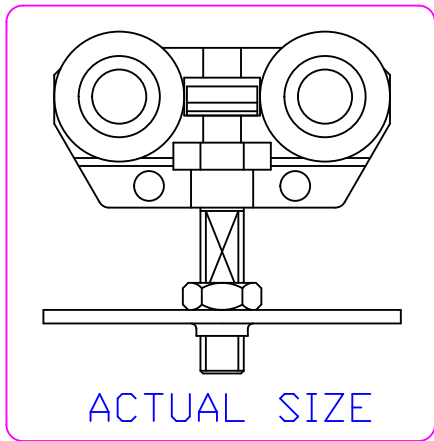


DRG No			01246		
DO NOT SCALE					
	NAME	DATE			
DRN	G.A.H.	08/02/02			
CHKD					
QA					
ISSUE	MOD No	DATE			
9	M3430	08/02/02			



- NOTES**
- ITEMS 3 - 4 - 5 MUST BE ASSEMBLED WITHIN BODY PLATES (ITEM 1) AFTER AXLES (ITEM 6) HAVE BEEN RIVETED.
 - ITEM 5 MUST ROTATE FREELY.
 - THERE SHOULD BE NO GAP BETWEEN BODY PLATES (ITEM 1) AFTER AXLES (ITEM 6) HAVE BEEN RIVETED.
 - AXLES (ITEM 6) SHOULD NOT TURN INDEPENDENTLY TO BODY PLATES (ITEM 1).



		HILLALDAM COBURN LTD UNIT 6, WYVERN ESTATE, BEVERLEY WAY, NEW MALDEN, SURREY, KT3 4PH, ENGLAND. TEL:- 0181 336 1515 FAX:- 0181 336 1414	
		CAD FILE No. COBURN\1\01246.DWG	
FINISH	TOLERANCES	SCALE 2:1 DIMENSIONS IN mm	
MATERIAL	0 Dec Pl ±0.5mm 1 Dec Pl ±0.2mm 2 Dec Pl ±0.1mm HOLES +0.12mm ANGLES ±0.5° (UNLESS STATED)		
TITLE		DRG No 01246 A3	
SERIES 100 FOLDING HANGER		/100	