

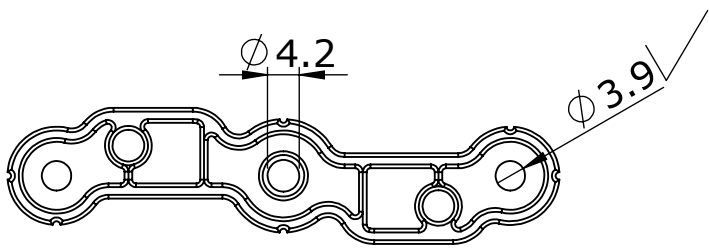


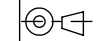
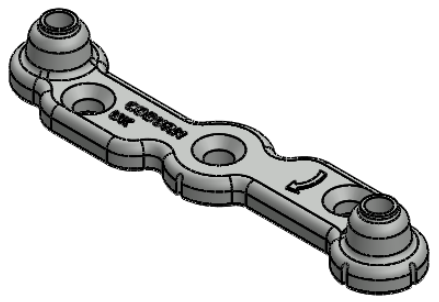
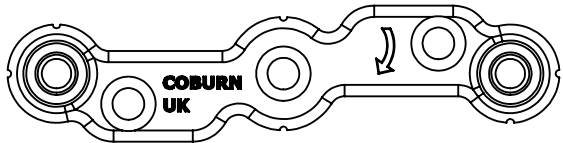
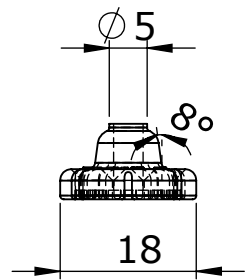
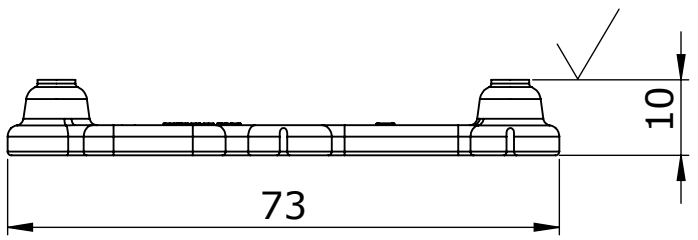
REMOVE ALL BURRS AND SHARP EDGES UNLESS NOTED OTHERWISE  
PARTS TO BE SUITABLY PACKAGED TO PREVENT CORROSION AND DAMAGE DURING TRANSIT

ITEM NO.	PART NUMBER	DESCRIPTION	QTY.	 HILLALDAM COBURN LTD UNIT 16, MERTON INDUSTRIAL PARK LEE ROAD, LONDON SW19 3HX, UK TEL:+44 (02)0 8545 6680 FAX:+44 (02)0 8545 6723 E-Mail:sales@hillaldam.co.uk Web:www.coburn.co.uk © COPYRIGHT HILLALDAM COBURN LTD THE INFORMATION CONTAINED IN THIS DRAWING IS THE SOLE PROPERTY OF <HILLALDAM COBURN LTD>. ANY REPRODUCTION IN PART OR AS A WHOLE WITHOUT THE WRITTEN PERMISSION OF <HILLALDAM COBURN LTD> IS PROHIBITED.	MATERIAL	UNLESS OTHERWISE SPECIFIED:	DRAWN	DATE	FILE DRG. No.	
1	wheel		2		Zinc Alloy	<b>DIMENSION(mm) TOLERANCE</b> ZERO PL DECIMAL ±0.2 ONE PL DECIMAL ±0.1 TWO PL DECIMAL ±0.05	Volkan Keskin	20/12/2013	3/ 00000/ 000	
2	pin_for roller		2		Zinc plated	ANGULAR TOLERANCE ±0.5° FORGING TOLERANCE SEE BS 4114	CHECKED MUS	20/12/2013	TITLE: <b>Adjustable Guide_with roller</b>	
3	Base Plate	Diecast Zinc	1		COMMENTS: REMOVE ALL SHARP EDGES AND BURRS	 DIMENSIONS ARE IN mm DO NOT SCALE DRAWING		SIZE <b>A4</b>	DRG/PART. No.	REV <b>01</b>
								SCALE: NTS	WEIGHT:	SHEET: 1/4



FOR UNSPECIFIED DIMENSIONS AND GEOMETRY, REFER TO 3D IGS FILE.  
 MACHINE CASTING AT PLACES MARKED ✓

DRAFT ANGLES AS REQUIRED.



UNLESS OTHERWISE SPECIFIED:

DIMENSION(mm)	TOLERANCE
ZERO PL DECIMAL	±0.2
ONE PL DECIMAL	±0.1
TWO PL DECIMAL	±0.05

ANGULAR TOLERANCE ±0.5°

FORGING TOLERANCE SEE BS 4114

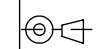


HILLALDAM COBURN LTD  
 UNIT 16, MERTON INDUSTRIAL PK  
 LEE ROAD, LONDON  
 SW19 3HX, ENGLAND  
 TEL: +44 (02)0 8545 6680  
 FAX: +44 (02)0 8545 6723  
 e-mail: sales@hillaldam.co.uk  
 www.coburn.co.uk  
 COPYRIGHT HILLALDAM COBURN LTD ©

THE INFORMATION CONTAINED IN THIS DRAWING IS THE SOLE PROPERTY OF <HILLALDAM COBURN LTD>. ANY REPRODUCTION IN PART OR AS A WHOLE WITHOUT THE WRITTEN PERMISSION OF <HILLALDAM COBURN LTD> IS PROHIBITED.

TITLE		<b>Base plate</b>
MATERIAL		<b>Zinc Alloy</b>
FINISH		<b>zinc plated</b>
DRAWN	DATE	Volkan Keskin 20/12/2013
CHECKED	DATE	MUS 20/12/2013
SCALE:NTS	SIZE: A4	SHEET:2/4
DRG/PART. No.	ISSUE	
	<b>01</b>	

REMOVE ALL BURRS AND SHARP EDGES

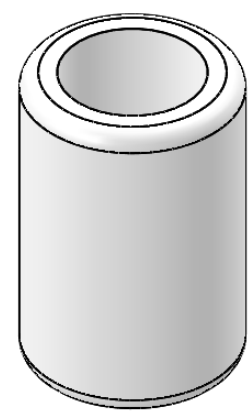
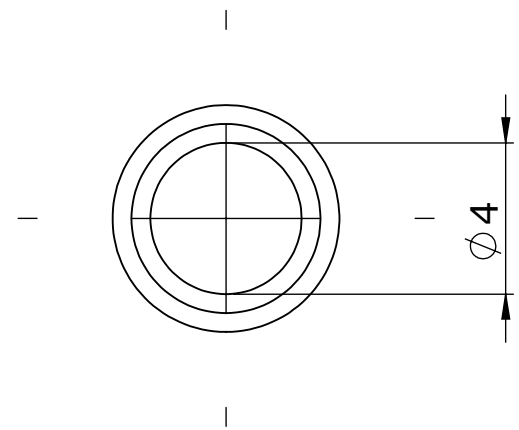
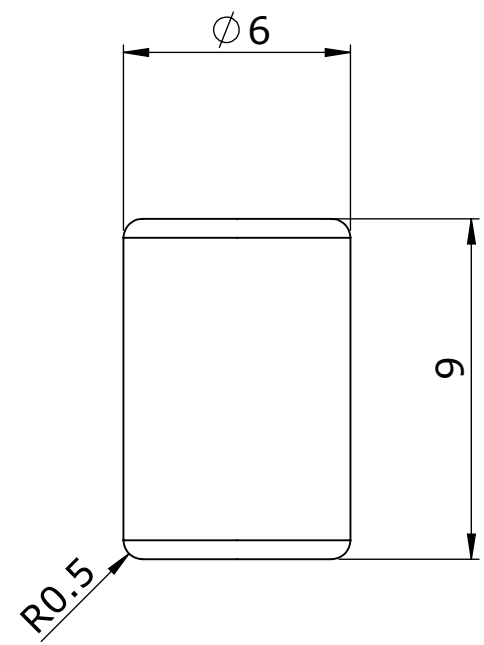


**UNLESS OTHERWISE SPECIFIED:**

DIMENSION(mm)	TOLERANCE
ZERO PL DECIMAL	±0.2
ONE PL DECIMAL	±0.1
TWO PL DECIMAL	±0.05

ANGULAR TOLERANCE ±0.5°

FORGING TOLERANCE SEE BS 4114



HILLALDAM COBURN LTD  
 UNIT 16, MERTON INDUSTRIAL PK  
 LEE ROAD, LONDON  
 SW19 3HX, ENGLAND  
 TEL: +44 (0)20 8545 6680  
 FAX: +44 (0)20 8545 6723  
 e-mail: sales@hillaldam.co.uk  
 www.coburn.co.uk

COPYRIGHT HILLALDAM COBURN LTD ©

THE INFORMATION CONTAINED IN THIS DRAWING IS THE SOLE PROPERTY OF <HILLALDAM COBURN LTD>. ANY REPRODUCTION IN PART OR AS A WHOLE WITHOUT THE WRITTEN PERMISSION OF <HILLALDAM COBURN LTD> IS PROHIBITED.

TITLE		
<b>Wheel with Bearings</b>		
MATERIAL		
Nylon 6		
FINISH		
pure white		
DRAWN	DATE	
Volkan Keskin	03/01/2014	
CHECKED	DATE	
MUS	28/03/2014	
SCALE:NTS	SIZE: A4	SHEET:3/4
DRG/PART. No.	ISSUE	
	<b>01</b>	

REMOVE ALL BURRS AND SHARP EDGES

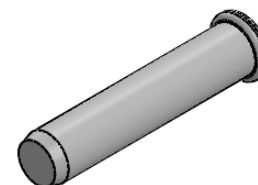
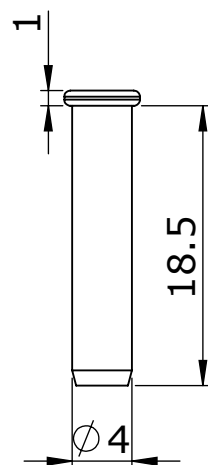
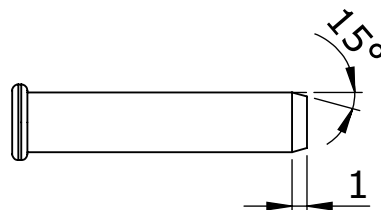
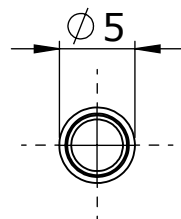


**UNLESS OTHERWISE SPECIFIED:**

DIMENSION(mm)	TOLERANCE
ZERO PL DECIMAL	±0.2
ONE PL DECIMAL	±0.1
TWO PL DECIMAL	±0.05

ANGULAR TOLERANCE ±0.5°

FORGING TOLERANCE SEE BS 4114



HILLALDAM COBURN LTD  
 UNIT 16, MERTON INDUSTRIAL PK  
 LEE ROAD, LONDON  
 SW19 3HX, ENGLAND  
 TEL: +44 (0)20 8545 6680  
 FAX: +44 (0)20 8545 6723  
 e-mail: sales@hillaldam.co.uk  
 www.coburn.co.uk

COPYRIGHT HILLALDAM COBURN LTD ©

THE INFORMATION CONTAINED IN THIS DRAWING IS THE SOLE PROPERTY OF <HILLALDAM COBURN LTD>. ANY REPRODUCTION IN PART OR AS A WHOLE WITHOUT THE WRITTEN PERMISSION OF <HILLALDAM COBURN LTD> IS PROHIBITED.

TITLE		
<b>Pin for roller</b>		
MATERIAL		
steel		
FINISH		
steel		
DRAWN	DATE	
Volkan Keskin	03/01/2014	
CHECKED	DATE	
MUS	28/03/2014	
SCALE:NTS	SIZE: A4	SHEET:4/4
DRG/PART. No.	ISSUE	
	<b>01</b>	

REMOVE ALL EXCESSIVE FLUSHES