



Straightaway 100 SS Commercial Sliding & Folding Door Systems

Door Specifications

- Maximum Door Weight: 100kg
- Door Thickness: 20mm - 50mm. Minimum door thickness 30mm when using channel
- Door Construction:
Timber framed, panelled or glazed with adequate top rail for secure fixing of hanger. Can also be used for metal doors of light angle or channel frame construction minimum thickness 40mm.

- Maximum Door Height: 2500mm
- Track Dimensions:
30mm (w) x 30mm (h)

Hardware Specifications

- Top track can be soffit fixed or side fixed with additional brackets
- Range of bottom guiding available to achieve clear thresholds
- Nylon wheeled hangers for smooth operation

- For single, bi parting or bi passing doors
- Detachable door plates enable easy and efficient installation
- Soft close available for doors up to 70kgs
- Hangers allow vertical and lateral adjustment

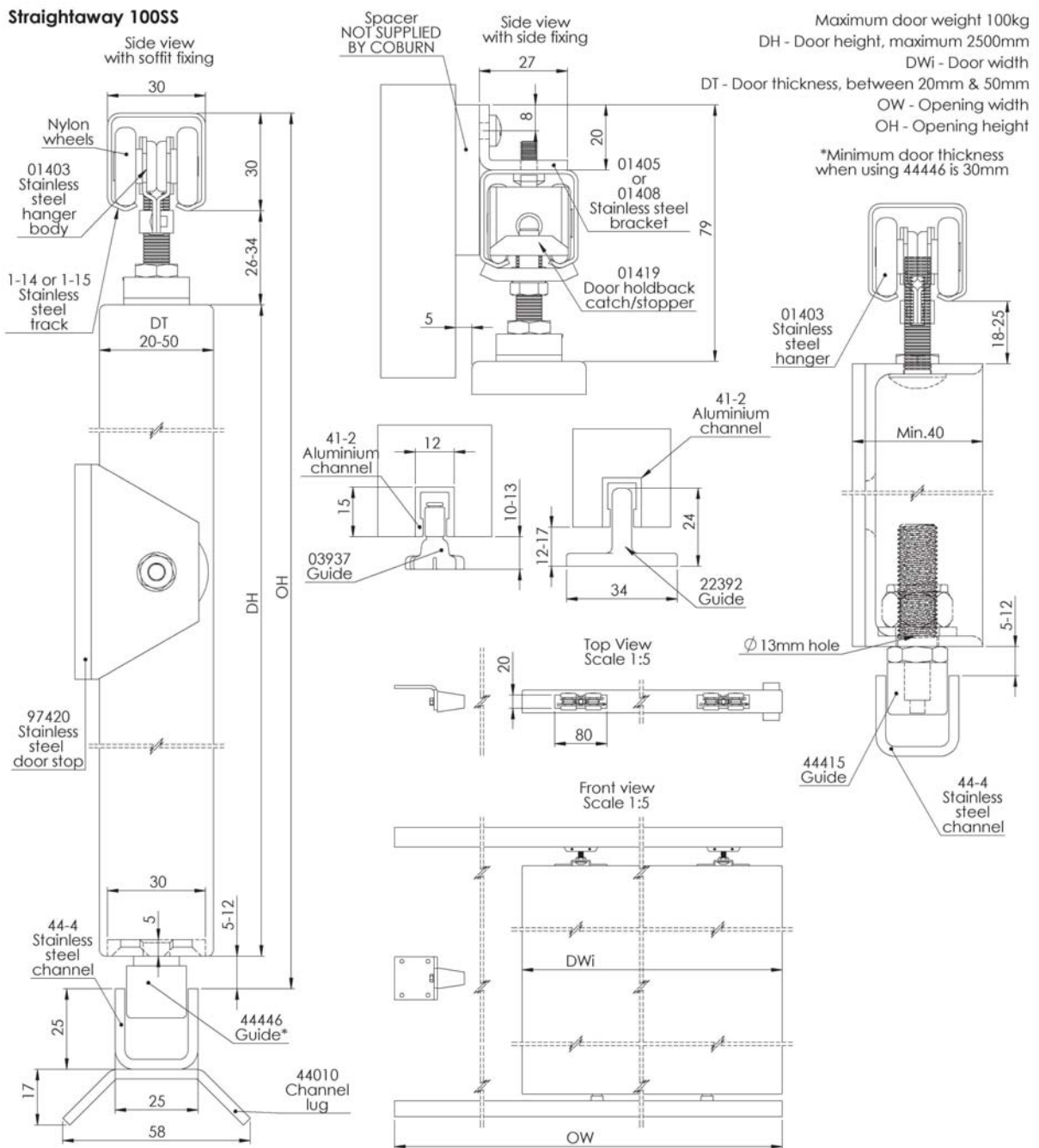
Straightaway 100 SS

Commercial Sliding & Folding Door Systems

Product Overview

Produced in stainless steel and developed to cope with harsh operating environments, the Coburn Straightaway 100SS is ideal for applications within the food and chemical industries and can withstand extreme climatic conditions.

Technical Specification



For further information please contact us:
 Tel: +44 (0)20 8545 6680 sales@coburn.co.uk www.coburn.co.uk

Straightaway 100 SS

Commercial Sliding & Folding Door Systems

Article No.	Description	Image
114	Mill finish grade 304 stainless steel top track available in 2.1 and 3.0m lengths	
115	Satin (inished) finish grade 316 stainless steel top track available in 2.1 and 2.5m lengths	
444	Mill finish grade 304 stainless steel bottom channel available in 2.1 and 3.0m lengths	
01405	Pack of 5 grade 304 stainless steel side fixing brackets	
01408	Pack of 8 grade 304 stainless steel side fixing brackets	
01419	Track end piece in pairs - grade 304 stainless steel	
01403	4 Wheel stainless steel hanger grade 316 with nylon wheels (pair)	
44371	Polypropylene door guide suitable for interior doors up to 1500mm wide	

Article No.	Description	Image
44446	Grade 304 stainless steel concealed guide suitable for timber doors over 1500mm wide	
44415	Grade 304 stainless steel roller guide suitable for metal doors of any width (pair)	
30611	Soft closer – side fix 70kg – not stainless steel	
30613	Soft closer – soffit fix 70kg – not stainless steel	
61401	Simultaneous synchro kit for doors up to 800mm wide – not stainless steel	
61403	Simultaneous synchro kit for doors up to 1200mm wide – not stainless steel	
97420	Grade 304 stainless steel door stop for wall fixing at mid height of door	
95612	Rectangular flush handle, 50mm x 100mm, grade 304 stainless steel. Depth 16mm, consider thickness of doors when fixing back to back (For our full range of accessories see pages 96-97)	



Commercial
Sliding & Folding
Door Systems

For further information please contact us:

Tel: +44 (0)20 8545 6680 sales@coburn.co.uk www.coburn.co.uk

Straightaway 100 SS

Commercial Sliding & Folding
Door Systems



Commercial
Sliding & Folding
Door Systems

For further information please contact us:

Tel: +44 (0)20 8545 6680 sales@coburn.co.uk www.coburn.co.uk

