

Foldaside 210 Interior

NOTE:

System recommended to be used up to 8 leaves

Maximum door weight 36kg

DH - Door height, maximum 2400mm

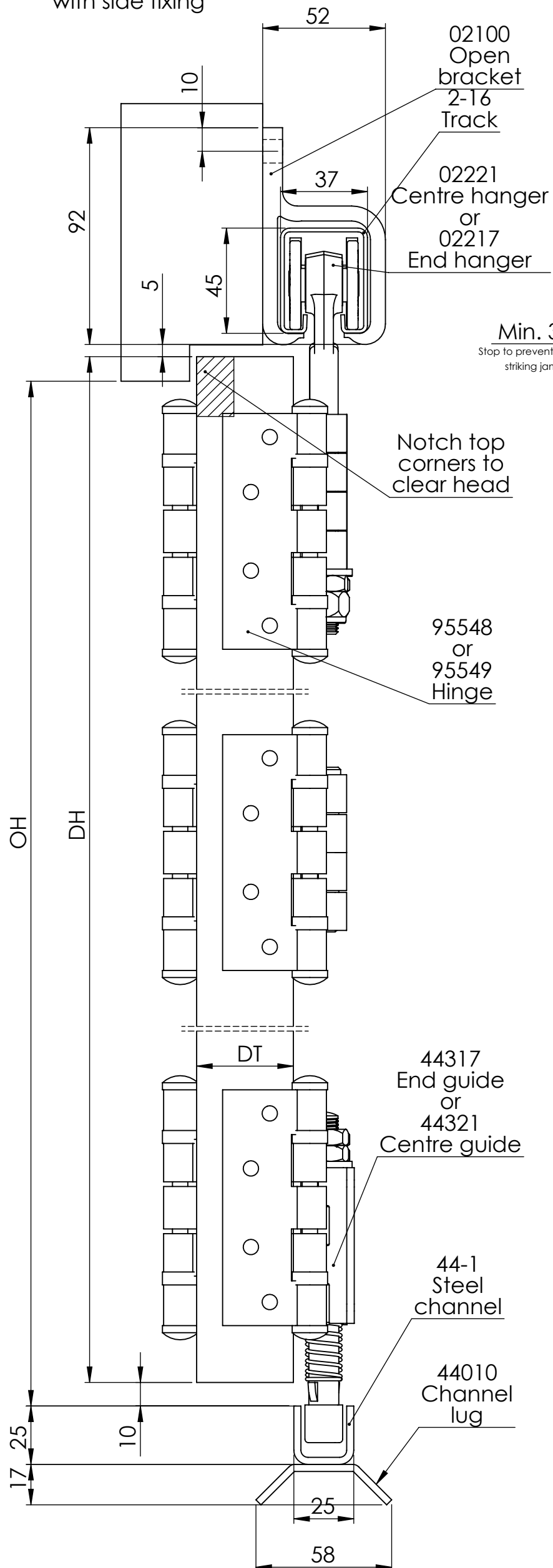
DWi - Door width, maximum 800mm

DT - Door thickness, between 32mm and 44mm

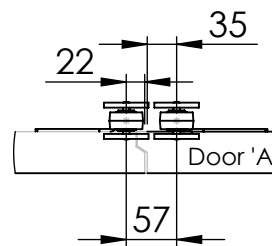
OW - Opening width

OH - Opening Height

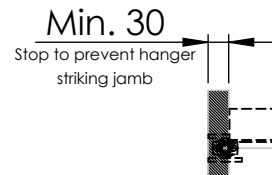
Side view
with side fixing



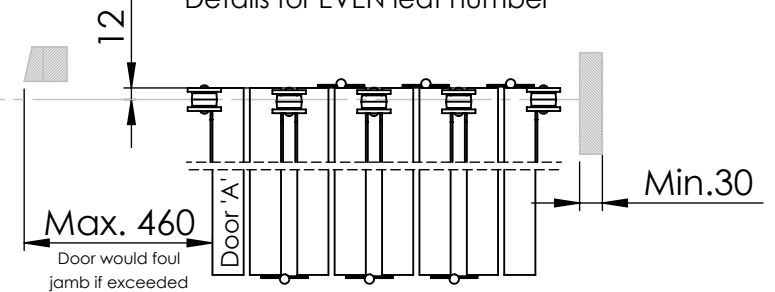
Top DETAIL view
EVEN number of leaves "floating" one
way with swing leaf on opposite jamb
Scale 1:3



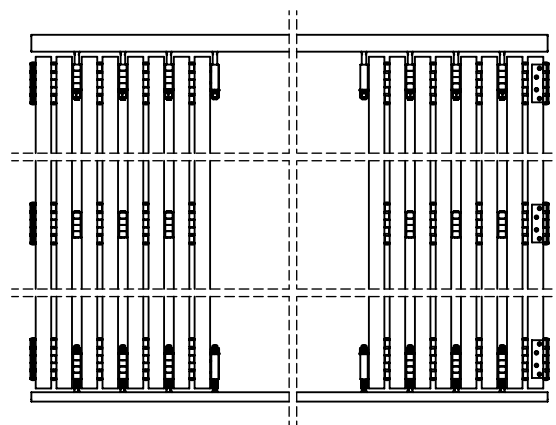
Top view
Doors in fully closed position
Details for EVEN leaf number
NOT TO SCALE



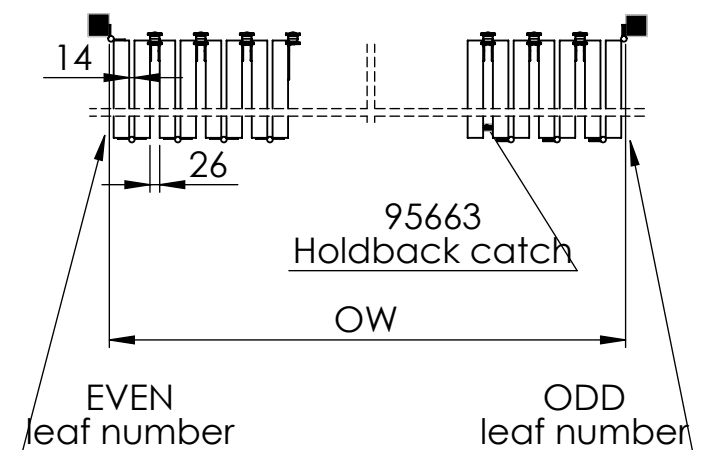
Top view
Doors in fully opened position
Details for EVEN leaf number



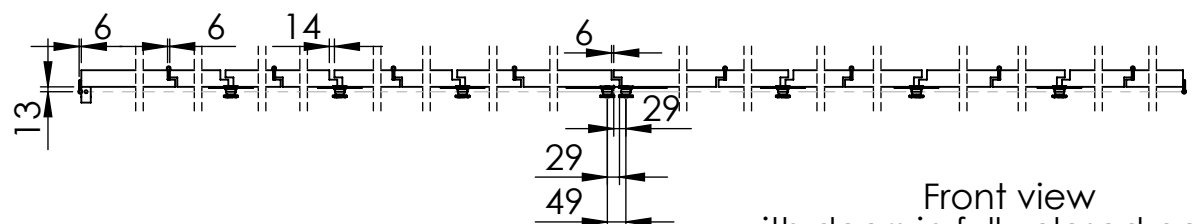
Front view
with doors in fully opened position
Scale 1:10



Top view
with doors in fully opened position
Scale 1:10



Top view
with doors in fully closed position
Scale 1:10



Front view
with doors in fully closed position
Scale 1:10

