



Centafold 644 Commercial Sliding & Folding Door Systems

### Door Specifications

- Maximum Door Weight: 60kg
- Door Thickness: 44mm only
- Maximum Door Width: 1200mm
- Maximum Opening Width: 18000mm
- Maximum Door Height: 3600mm
- Top Channel Dimensions  
45mm (w) x 29mm (h)

### Door Construction:

Up to 7½ leaves may be hinged together with the half leaf hinged to the jamb. With swing leaves on folding suites reduce door height to 3.0m, leaf width to 800mm and weight to 45kg. Always engage holdback catch before operating.

### SPECIAL NOTE:

Particular attention should be paid by the joiner to leaf sizes and the reduction of the first leaf at the jamb by 25mm as shown.

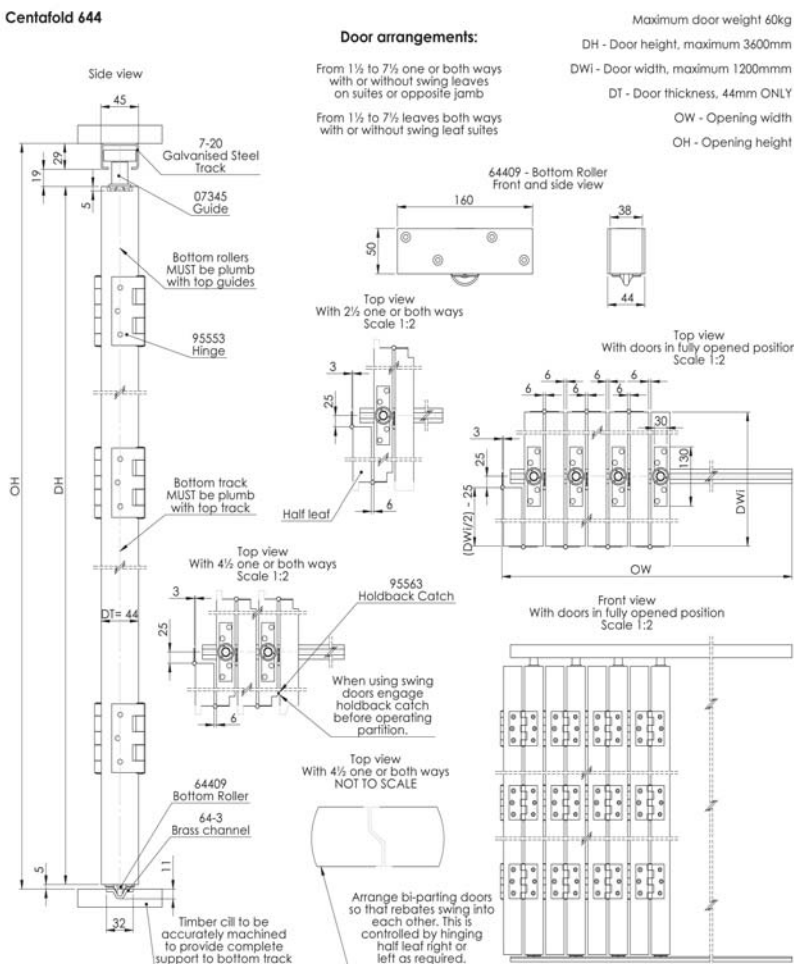
### Hardware Specifications

- Steel top channel galvanised to BS EN 10346 screwed directly to soffit
- Floor track unnecessary under swing leaves
- Bottom roller is supplied with silver and gold anodised aluminium cover plates
- Suitable for timber doors
- Aluminium bottom channel, drilled and countersunk
- Nylon wheeled top guide for smooth operation

## Commercial Sliding & Folding Door Systems

Centafold 644 is a bottom rolling system for internal folding doors for openings without rebated heads or cills. Ideal for when the overhead structure would not support the weight of a suite of doors. Suitable for hospitals, schools, offices etc.

## 644



Article No.	Description	Image
720	Galvanised steel top channel available in 1.8, 2.1, 2.4 and 3.0m lengths	
64330	Brass bottom track 3.0m	
64409	Bottom roller with silver and gold anodised aluminium cover plates	
95553	Polished brass butt hinges (pack of 3)	
07345	Top guide with single nylon wheel	
95664	Holdback catch (gold finish)	
95670	Flush bolt – gold anodised aluminium 190mm	
95615	Rectangular flush handle, 50mm x 100mm, polished brass (For our full range of accessories see pages 96-97)	



## Commercial Sliding & Folding Door Systems

For further information please contact us:

Tel: +44 (0)20 8545 6680 [sales@coburn.co.uk](mailto:sales@coburn.co.uk) [www.coburn.co.uk](http://www.coburn.co.uk)

