

Centafold 644

Maximum door weight 60kg

DH - Door height, maximum 3600mm

DWi - Door width, maximum 1200mmm

DT - Door thickness, 44mm ONLY

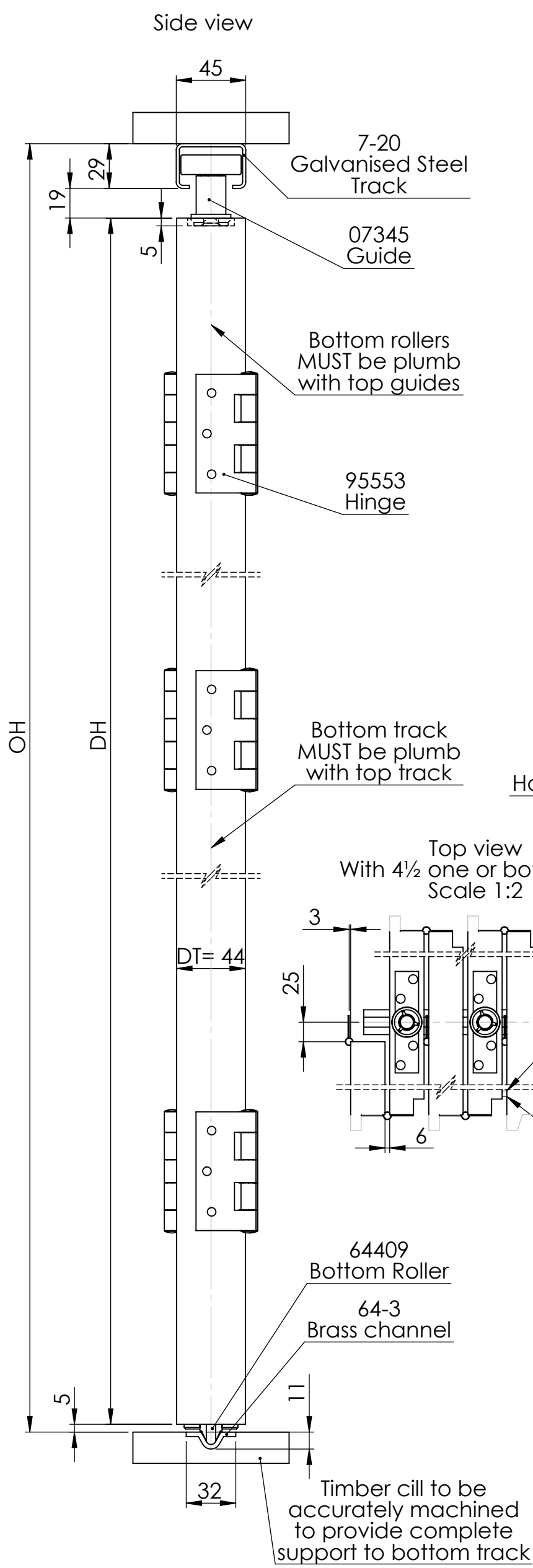
OW - Opening width

OH - Opening height

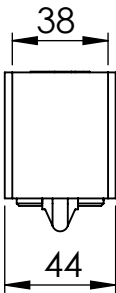
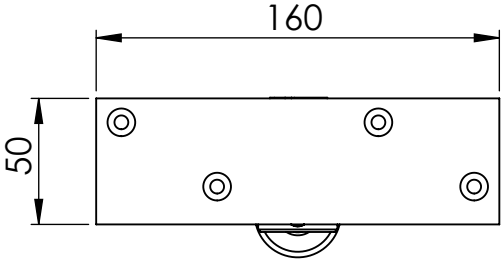
Door arrangements:

From 1½ to 7½ one or both ways
with or without swing leaves
on suites or opposite jamb

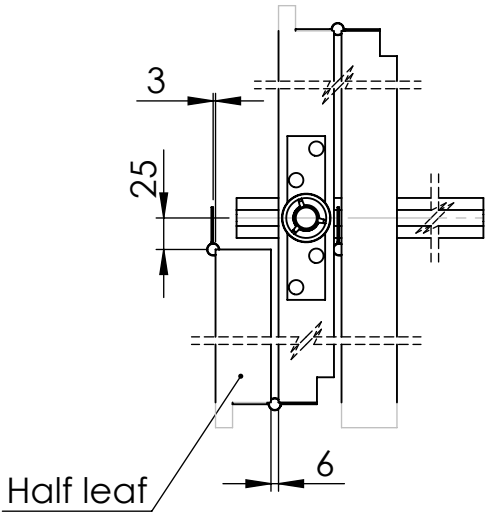
From 1½ to 7½ leaves both ways
with or without swing leaf suites



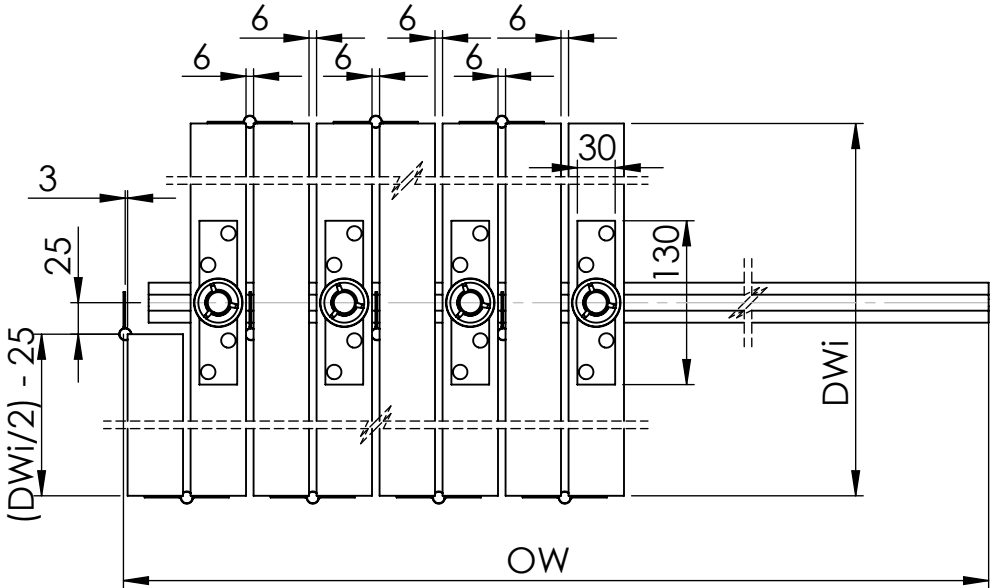
64409 - Bottom Roller
Front and side view



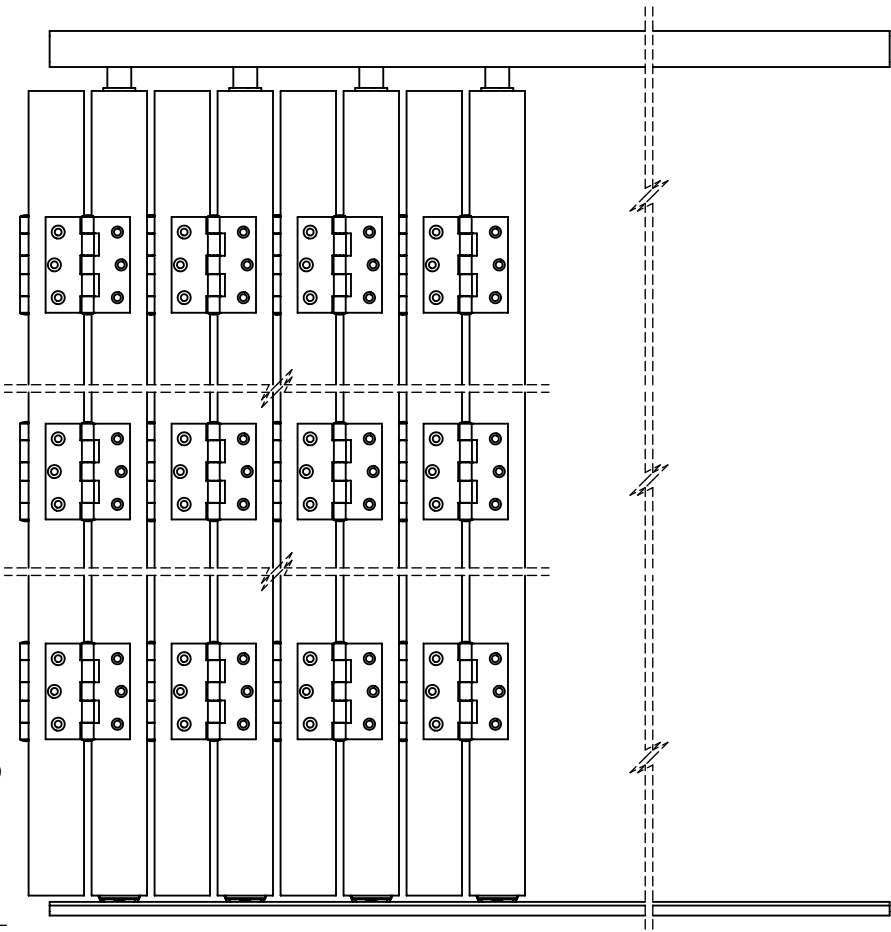
Top view
With 2½ one or both ways
Scale 1:2



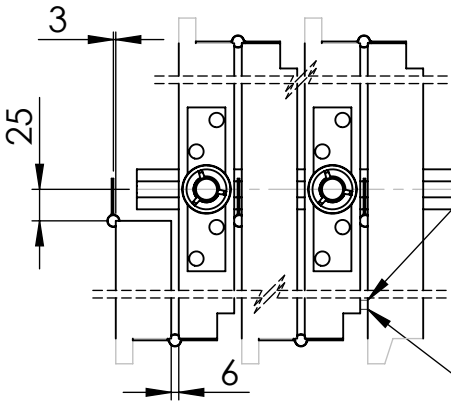
Top view
With doors in fully opened position
Scale 1:2



Front view
With doors in fully opened position
Scale 1:2



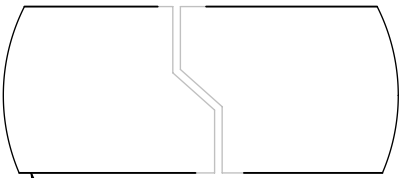
Top view
With 4½ one or both ways
Scale 1:2



95563
Holdback Catch

When using swing
doors engage
holdback catch
before operating
partition.

Top view
With 4½ one or both ways
NOT TO SCALE



Arrange bi-parting doors
so that rebates swing into
each other. This is
controlled by hinging
half leaf right or
left as required.