

SLIDING DOOR GEAR

ONE ONLY
2-002
LOCK JOINT KIT
FOR 2-100 BRACKET

This kit should always be supplied
with 2-100 plain bracket



A PRODUCT OF
Hillaldam Cobum

SLIDING DOOR GEAR

ONE ONLY
2-002
LOCK JOINT KIT
FOR 2-100 BRACKET

This kit should always be supplied
with 2-100 plain bracket



A PRODUCT OF
Hillaldam Cobum

SLIDING DOOR GEAR

ONE ONLY
2-002
LOCK JOINT KIT
FOR 2-100 BRACKET

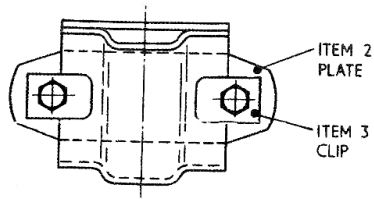
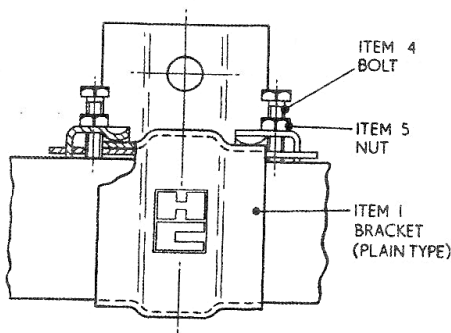
This kit should always be supplied
with 2-100 plain bracket



A PRODUCT OF
Hillaldam Cobum

ASSEMBLY INSTRUCTIONS FOR LOCK-JOINT
KIT 2-002 TO CONVERT PLAIN BRACKET
2-100 INTO A LOCK-JOINT BRACKET 2-102

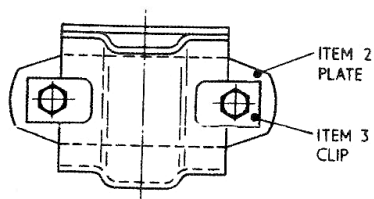
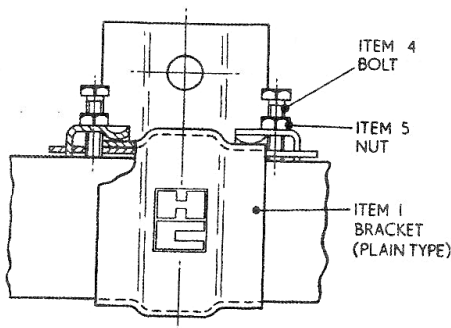
THE FOLLOWING PROCEDURE IS BEST UNDERTAKEN BEFORE ERECTION.



- (A) TAKE ONE 2-100 PLAIN BRACKET (ITEM 1) AND PASS THE LONG PLATE (ITEM 2) THROUGH TO PROJECT AN EVEN AMOUNT BOTH SIDES.
- (B) TAKE ONE ONLY CLIP (ITEM 3) AND PASS THE SHAPED END INTO THE SLOT IN ITEM 2 MAKING SURE THE OTHER END OVERLAPS THE BRACKET.
- (C) THREAD THE NUT (ITEM 5) UP THE BOLT (ITEM 4) TO WELL OVER HALF WAY AND THEN INSERT THE BOLT THROUGH THE PLAIN HOLE IN THE CLIP AND SCREW INTO THE THREADED HOLE IN THE PLATE.
- (D) REPEAT (B) AND (C) AT OPPOSITE SIDE
- (E) WHEN ERECTED WITH TWO LENGTHS OF TRACK BUTTING TOGETHER IN CENTRE OF BRACKET SCREW BOLTS (ITEM 4) DOWN ON TO TOP OF TRACK AND LOCK DOWN BY TIGHTENING NUTS (ITEM 5) DOWN ON TO TOP OF CLIPS (ITEM 3).

ASSEMBLY INSTRUCTIONS FOR LOCK-JOINT
KIT 2-002 TO CONVERT PLAIN BRACKET
2-100 INTO A LOCK-JOINT BRACKET 2-102

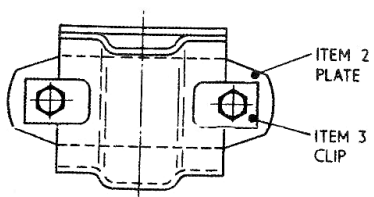
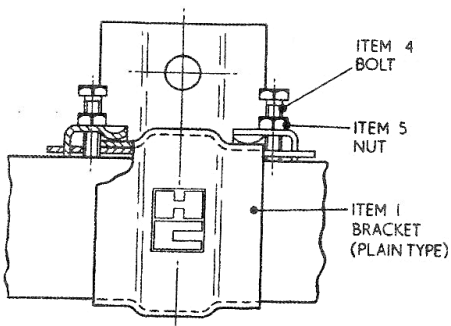
THE FOLLOWING PROCEDURE IS BEST UNDERTAKEN BEFORE ERECTION.



- (A) TAKE ONE 2-100 PLAIN BRACKET (ITEM 1) AND PASS THE LONG PLATE (ITEM 2) THROUGH TO PROJECT AN EVEN AMOUNT BOTH SIDES.
- (B) TAKE ONE ONLY CLIP (ITEM 3) AND PASS THE SHAPED END INTO THE SLOT IN ITEM 2 MAKING SURE THE OTHER END OVERLAPS THE BRACKET.
- (C) THREAD THE NUT (ITEM 5) UP THE BOLT (ITEM 4) TO WELL OVER HALF WAY AND THEN INSERT THE BOLT THROUGH THE PLAIN HOLE IN THE CLIP AND SCREW INTO THE THREADED HOLE IN THE PLATE.
- (D) REPEAT (B) AND (C) AT OPPOSITE SIDE
- (E) WHEN ERECTED WITH TWO LENGTHS OF TRACK BUTTING TOGETHER IN CENTRE OF BRACKET SCREW BOLTS (ITEM 4) DOWN ON TO TOP OF TRACK AND LOCK DOWN BY TIGHTENING NUTS (ITEM 5) DOWN ON TO TOP OF CLIPS (ITEM 3).

ASSEMBLY INSTRUCTIONS FOR LOCK-JOINT
KIT 2-002 TO CONVERT PLAIN BRACKET
2-100 INTO A LOCK-JOINT BRACKET 2-102

THE FOLLOWING PROCEDURE IS BEST UNDERTAKEN BEFORE ERECTION.



- (A) TAKE ONE 2-100 PLAIN BRACKET (ITEM 1) AND PASS THE LONG PLATE (ITEM 2) THROUGH TO PROJECT AN EVEN AMOUNT BOTH SIDES.
- (B) TAKE ONE ONLY CLIP (ITEM 3) AND PASS THE SHAPED END INTO THE SLOT IN ITEM 2 MAKING SURE THE OTHER END OVERLAPS THE BRACKET.
- (C) THREAD THE NUT (ITEM 5) UP THE BOLT (ITEM 4) TO WELL OVER HALF WAY AND THEN INSERT THE BOLT THROUGH THE PLAIN HOLE IN THE CLIP AND SCREW INTO THE THREADED HOLE IN THE PLATE.
- (D) REPEAT (B) AND (C) AT OPPOSITE SIDE
- (E) WHEN ERECTED WITH TWO LENGTHS OF TRACK BUTTING TOGETHER IN CENTRE OF BRACKET SCREW BOLTS (ITEM 4) DOWN ON TO TOP OF TRACK AND LOCK DOWN BY TIGHTENING NUTS (ITEM 5) DOWN ON TO TOP OF CLIPS (ITEM 3).