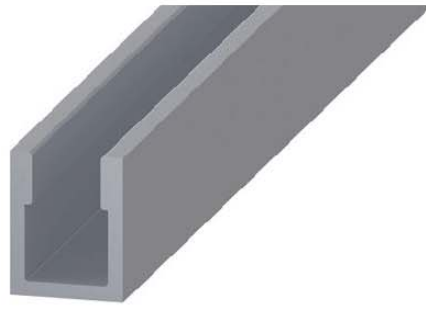


# FITTING INSTRUCTIONS FOR FOLDASIDE 50

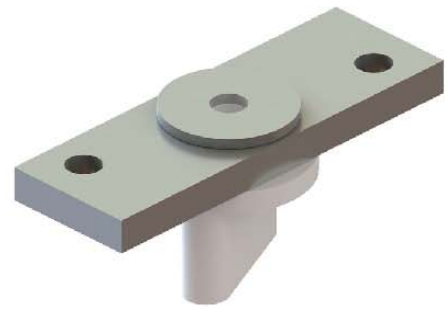
## COMPONENTS



18020/24/30/36/40/60  
Anodized Aluminium Track



41224/36/60  
Bottom Channel



41346  
Bottom guide



01821  
4 Wheel  
intermediate  
hanger set



01822  
2 Wheel end  
hanger set



95519  
Top & Bottom  
pivot assembly



95548  
3 Hinge Set, SS

### Technical Specifications

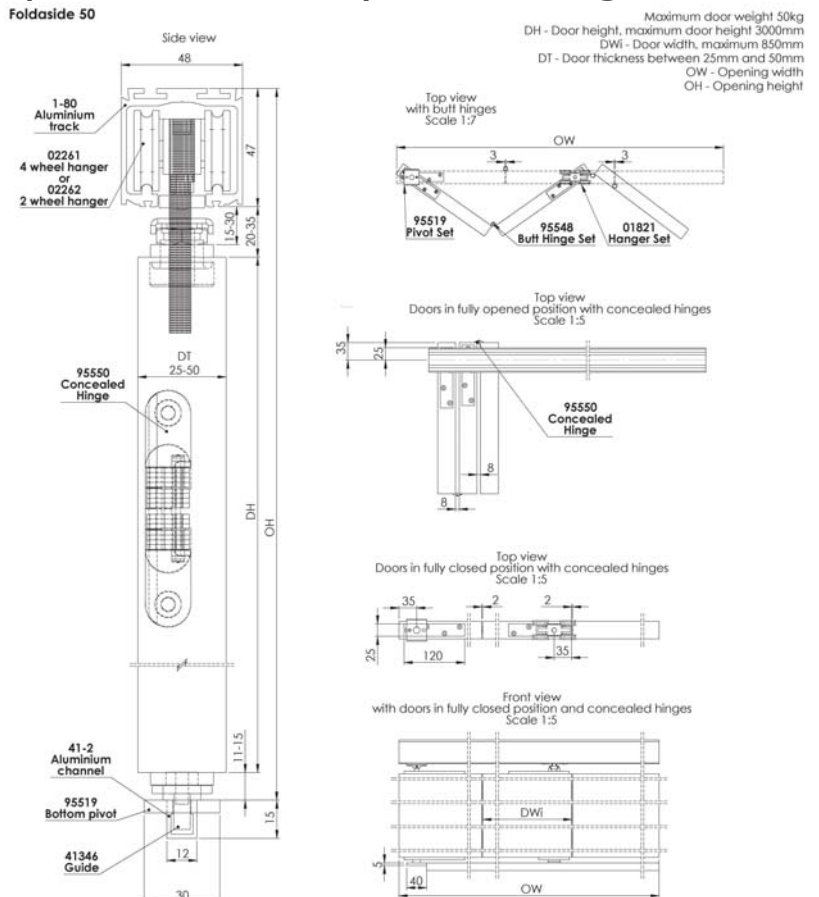
Maximum door weight: 50kg

Maximum door width: 850mm

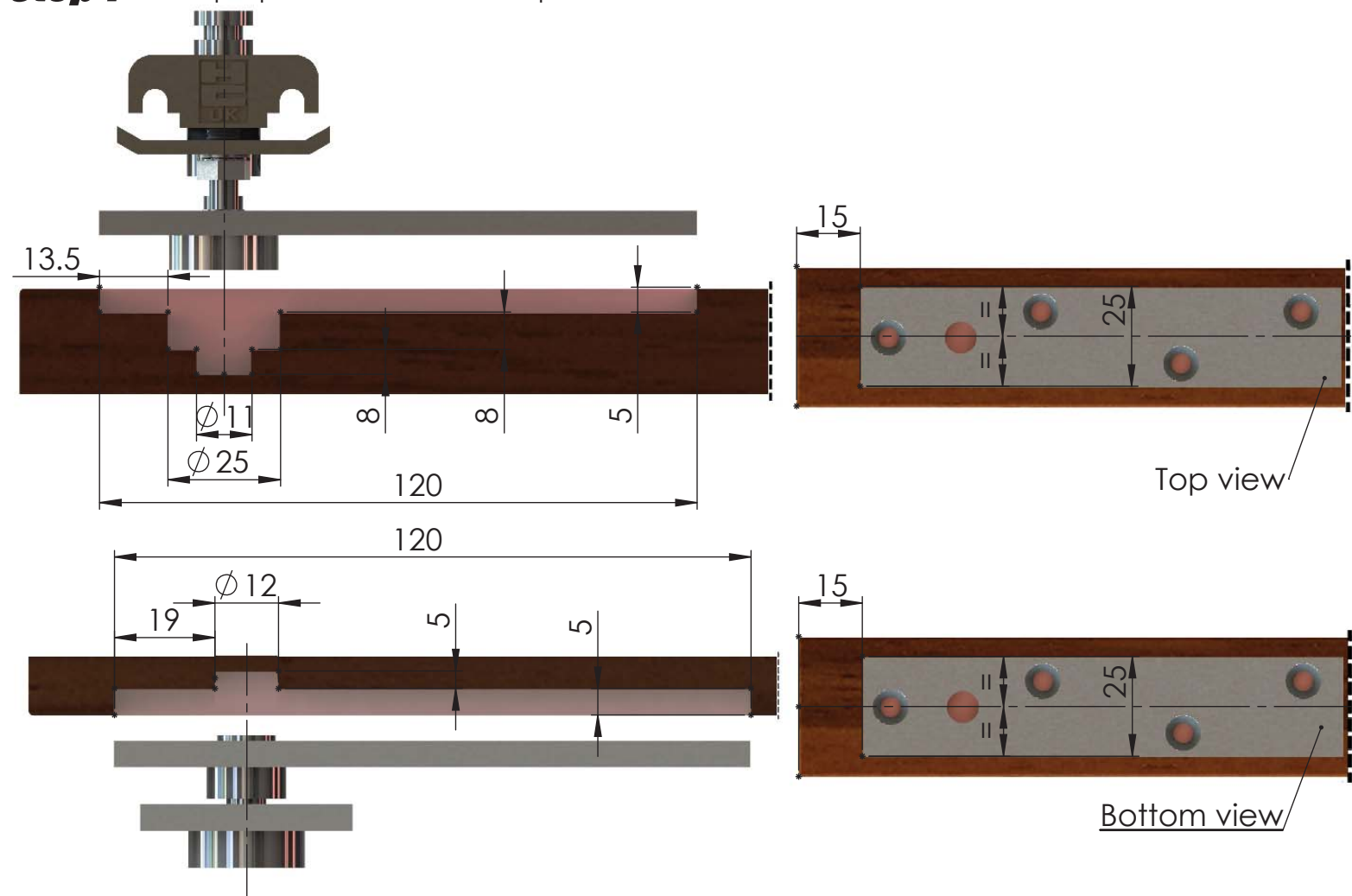
Maximum door height: 3000mm

Door Thickness: 30 – 50mm

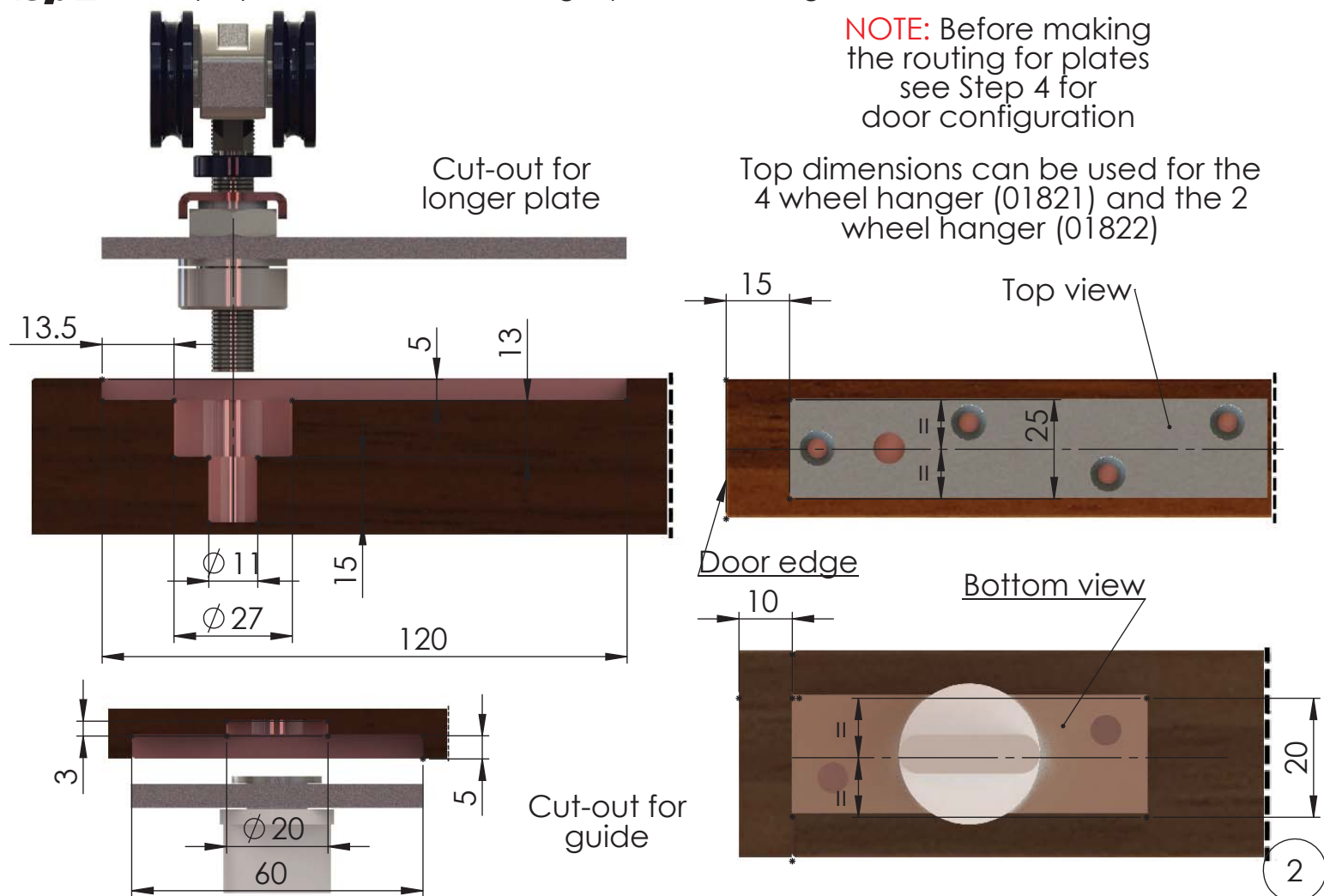
Track Dimensions:  
47mm (w) x 48mm (h)



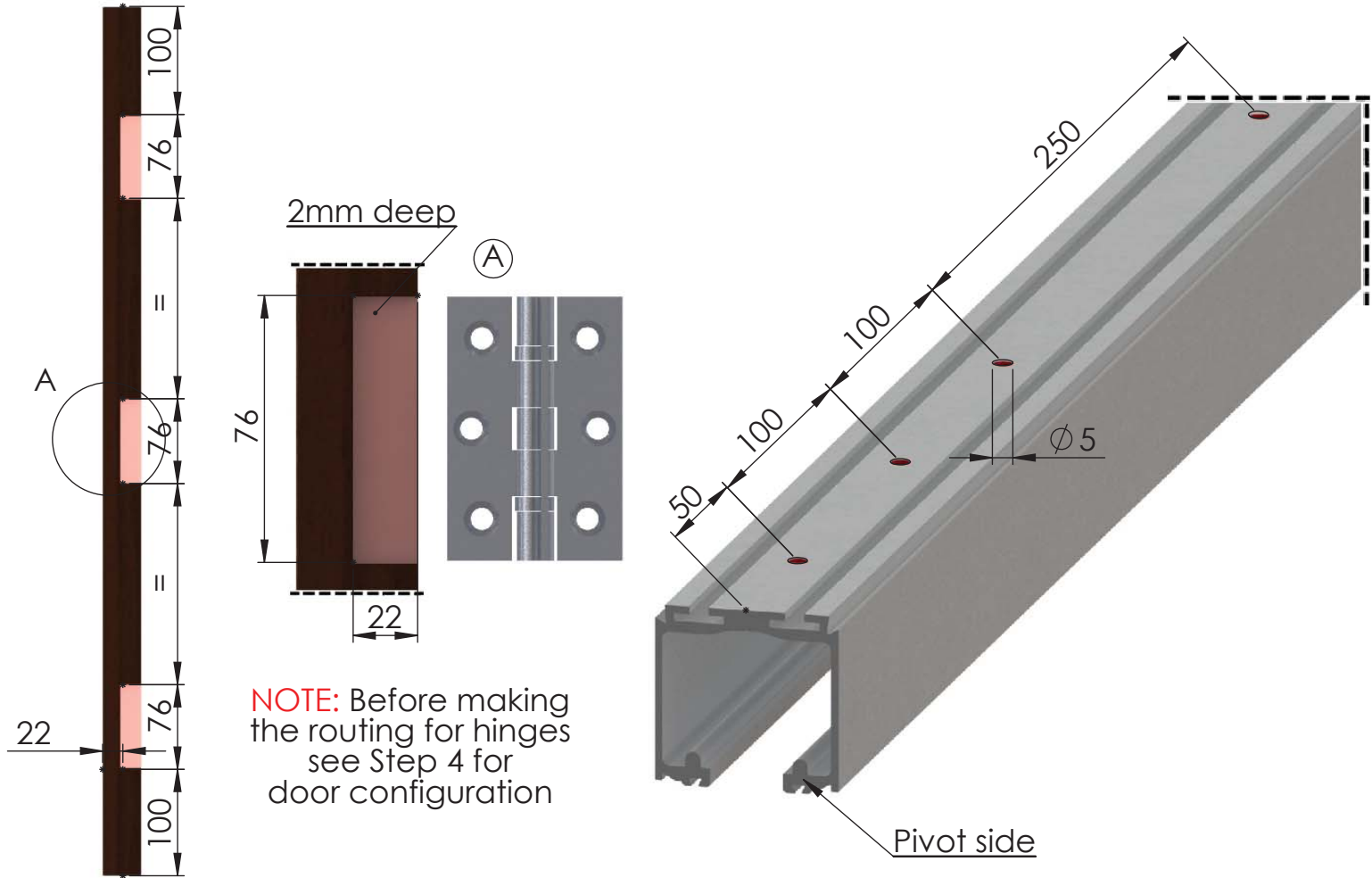
**Step 1** Door preparation: cut-out for pivots



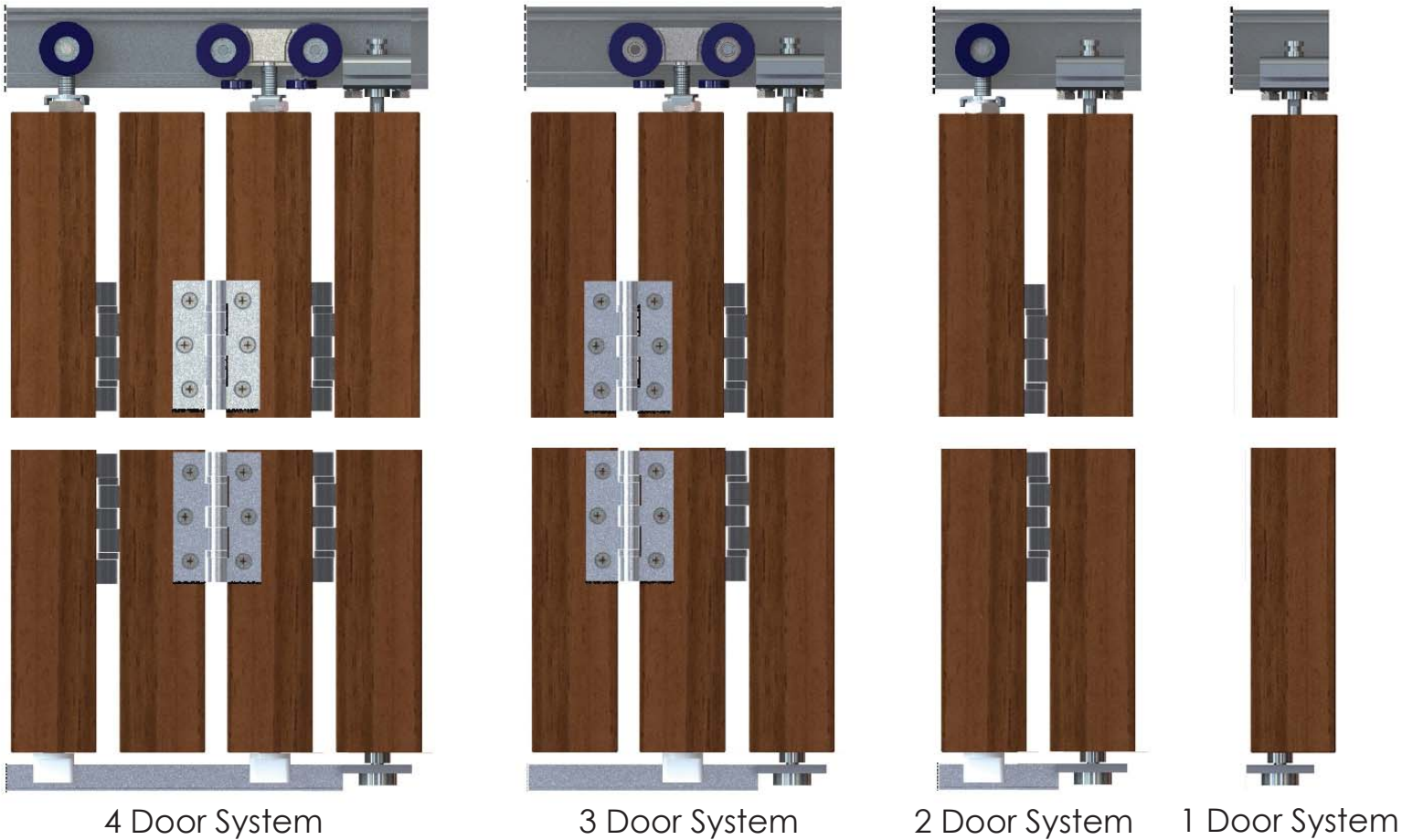
**Step 2** Door preparation: cut-out for longer plate and hanger



### Step 3 Preparing the door and track

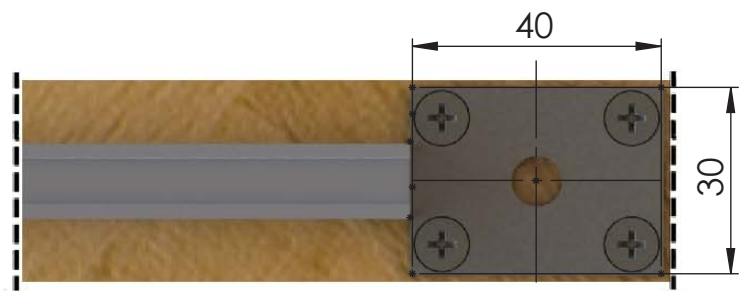


### Step 4 Door configuration

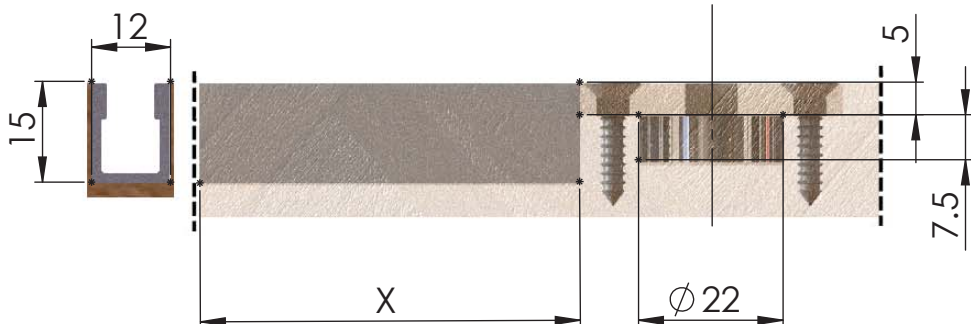




**Step 5** Mounting floor channel and bottom pivot base



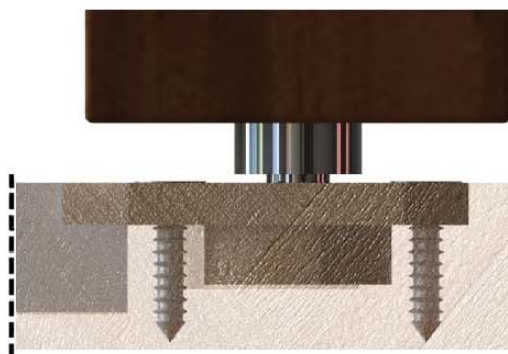
Make a floor recess for the bottom pivot base plate, and fix the plate with 4 screws



Make a floor recess for the bottom channel  
X = length of channel

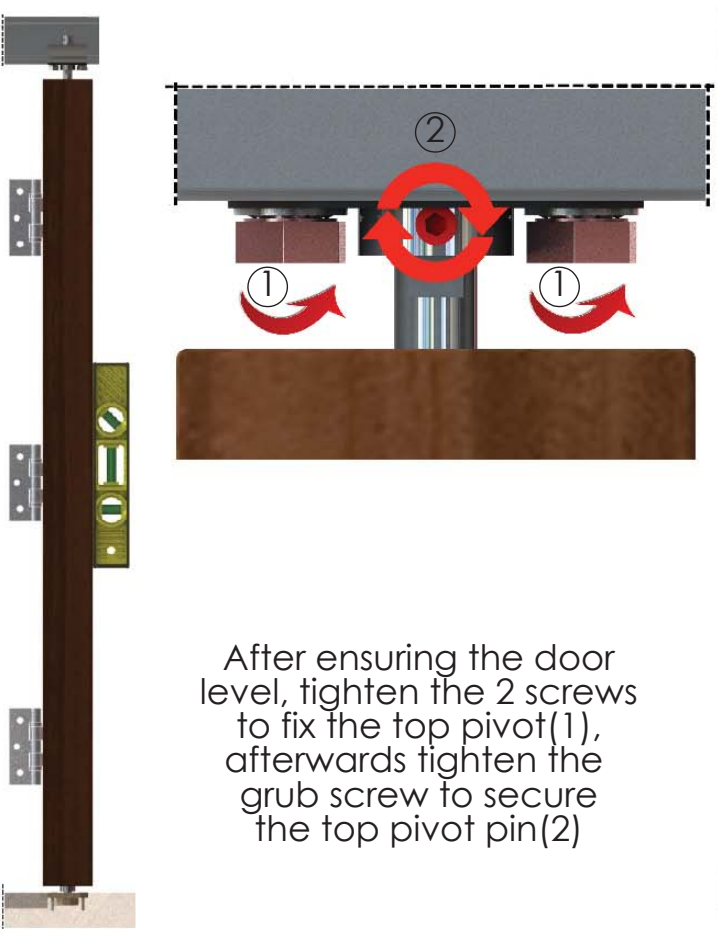


Insert the top pivot into track and raise the top pivot pin so that the door can go under the assembly



Insert the bottom pivot pin in the base plate and release the top pivot pin inside the top plate.

**Step 6** Leveling the door and insert the next leaf



After ensuring the door level, tighten the 2 screws to fix the top pivot (1), afterwards tighten the grub screw to secure the top pivot pin (2)



Insert the top hanger into track and the bottom guide into bottom channel.

Bring assembly in position as seen in the left picture, ensure the level by adjusting the hanger bolt (after adjusting put the lock washer in place) and secure with screws.

Follow this step until the desired number of doors is achieved

