

STRAIGHTAWAY G130 FITTING INSTRUCTIONS

Tracks can be Soffit or Side fixed.

Smooth and silent running.

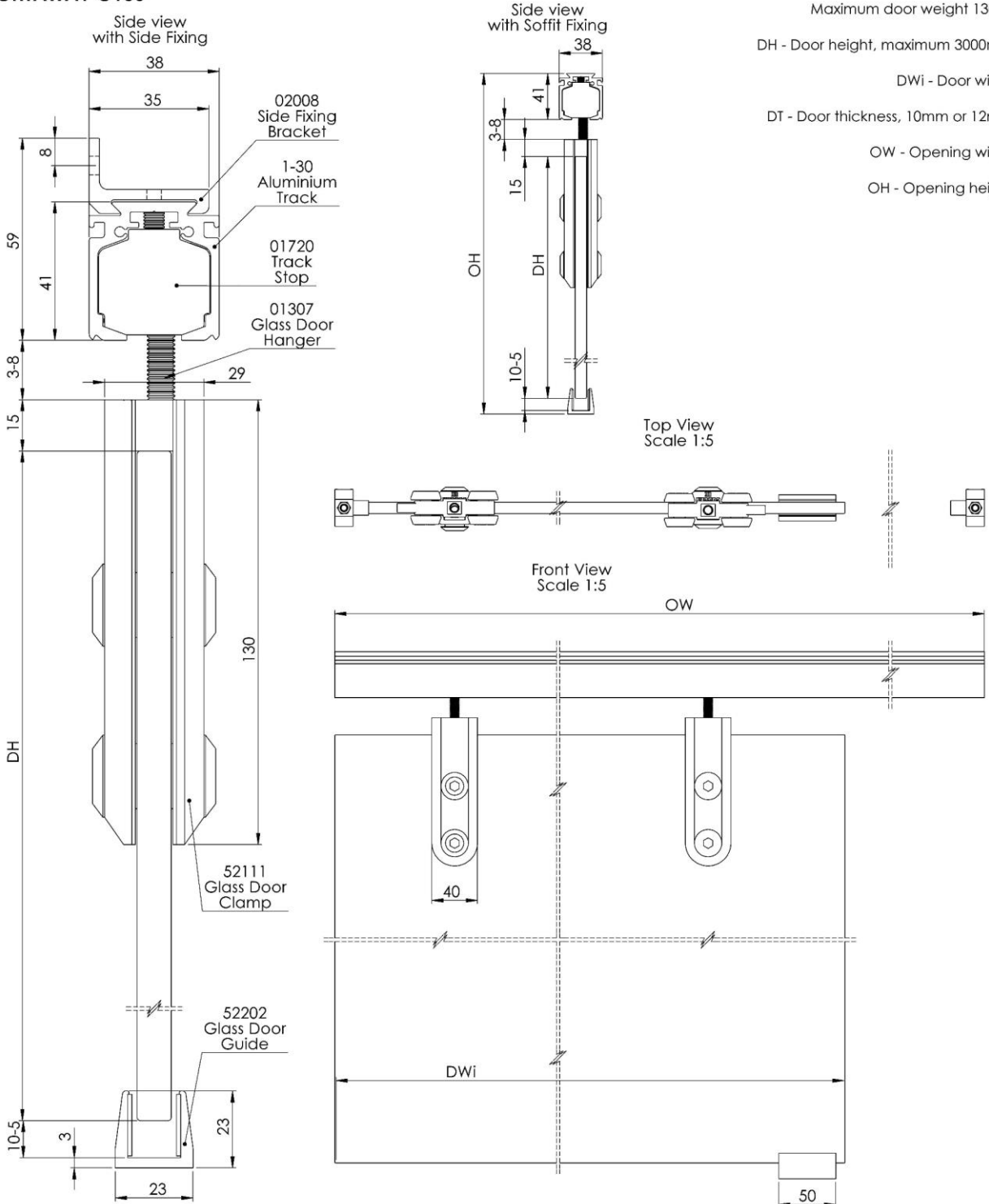
Soft closing available.

Simultaneous opening (synchro) optional.

Patch fittings supplied in brushed stainless steel finish.

No recess floor tracks required.

STRAIGHTAWAY G130



Maximum door weight 130kg

DH - Door height, maximum 3000mm

DWi - Door width

DT - Door thickness, 10mm or 12mm

OW - Opening width

OH - Opening height

ACCESSORIES



01307 – HANGER FOR GLASS DOORS (PAIR)



52111 – CLAMP, SATIN STAINLESS STEEL,
10 OR 12 MM GLASS



52112 – PATCH FITTINGS, SATIN STAINLESS STEEL,
130KG, 10 OR 12MM GLASS



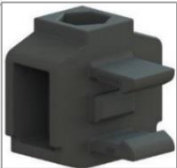
61401 – SIMULTANEOUS KIT



30614 – SOFT CLOSER, 130KG, TRACK MOUNTED



13020/24/30/36/40/60 – ALUMINIUM TRACK

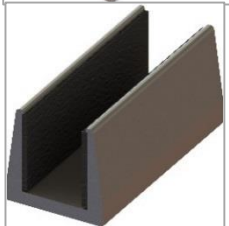


01720 – TRACK STOP, PAIR



02008 – FACE FIXED BRACKET (5PCS)

02009 – FACE FIXED BRACKET (8PCS)

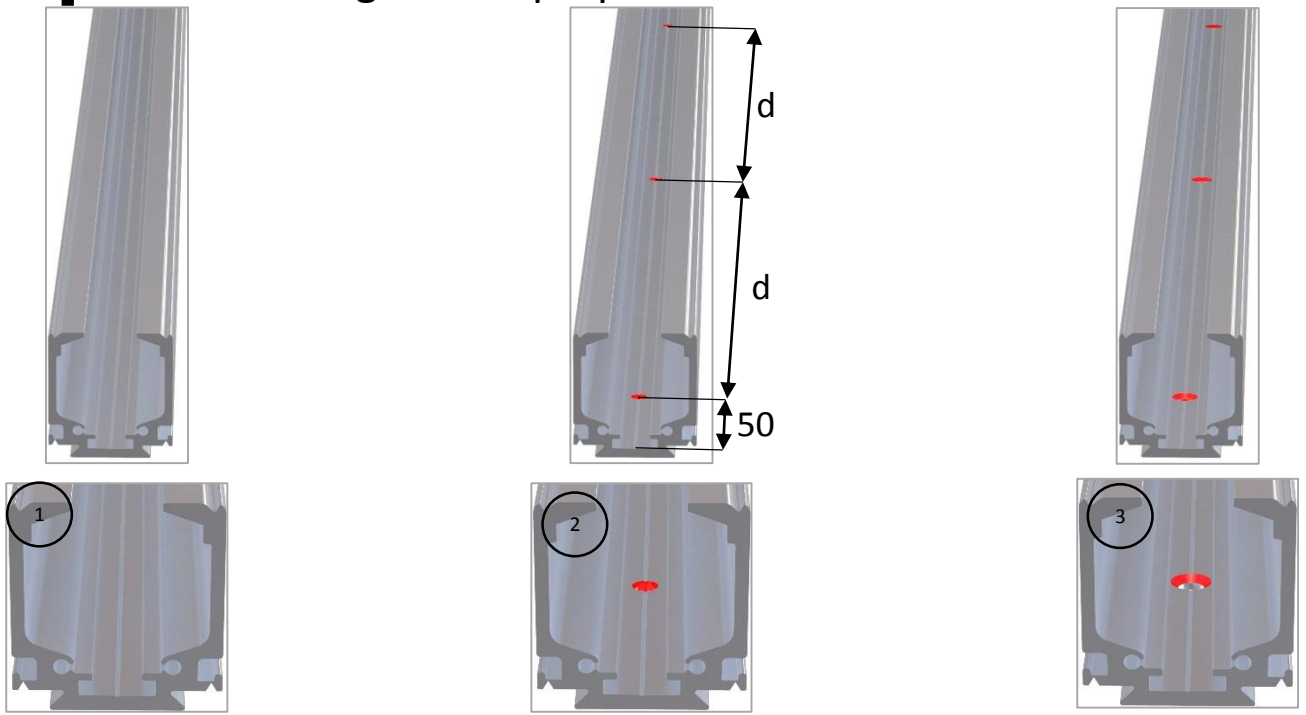


52202 – GLASS FLOOR GUIDE, ALUMINIUM



52203 – GLASS FLOOR GUIDE, SS

Step 1 Soffit fixing – track preparation

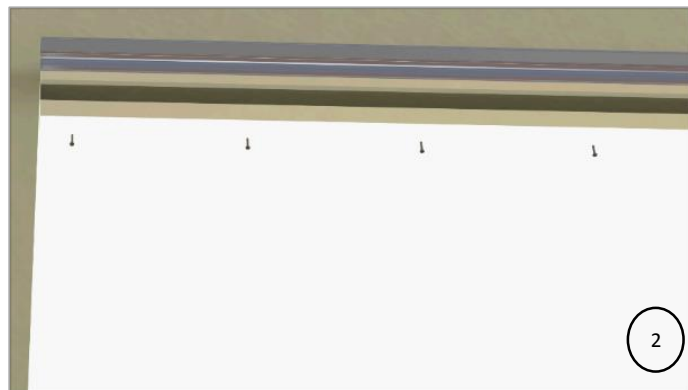
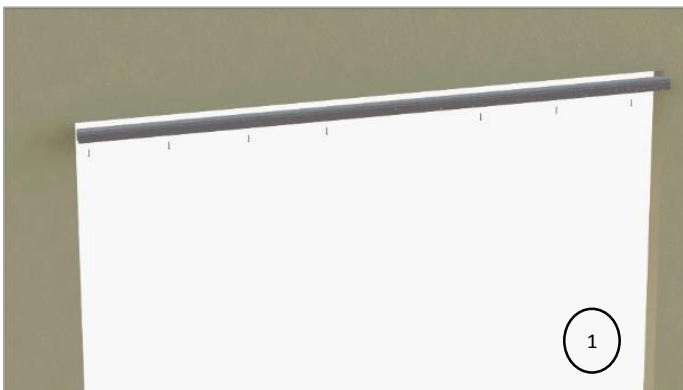


2. Pre-drill $\varnothing 5$ holes in track for easier installation.

3. We recommend to countersink all holes to eliminate the possibility of hanger bolt or hanger body touching the screw and stopping or interfering with the movement

NB: $d = 275 - 350\text{mm}$

Step 2 Soffit fixing – track installation



2. Go underneath the opening

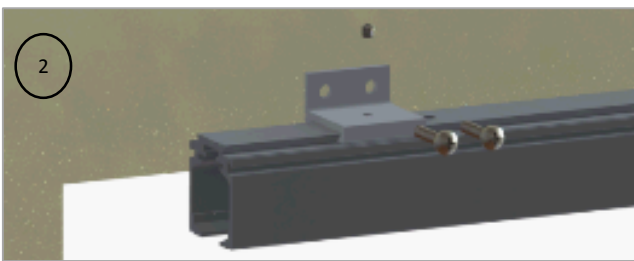
3. Insert the track into place and secure it with screws



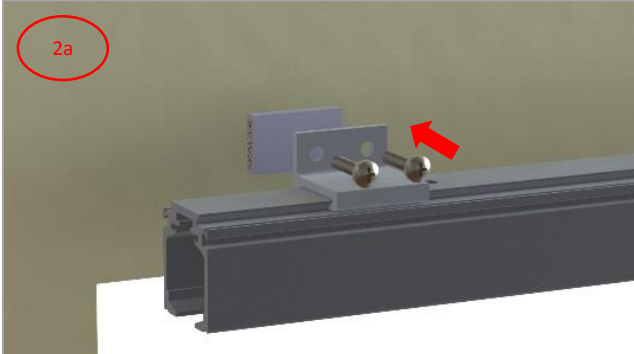
Step 3 Side fixing



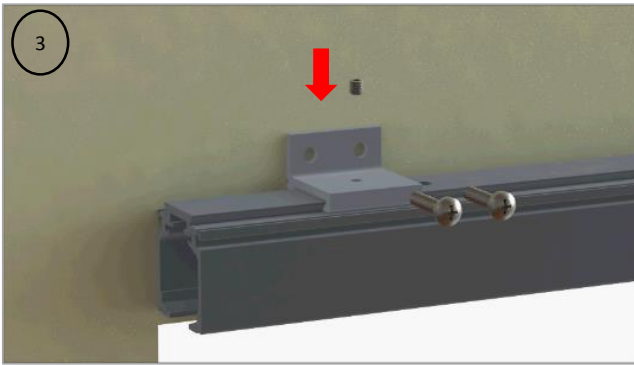
- 1. Track preparation
- 2. Slide brackets on top of track



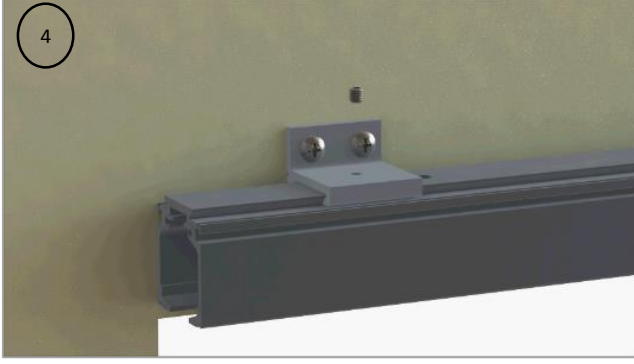
2a. **OPTIONAL STEP:** Use a spacer (NOT SUPPLIED BY COBURN) between bracket and wall so that 5mm minimum distance between door and wall is maintained



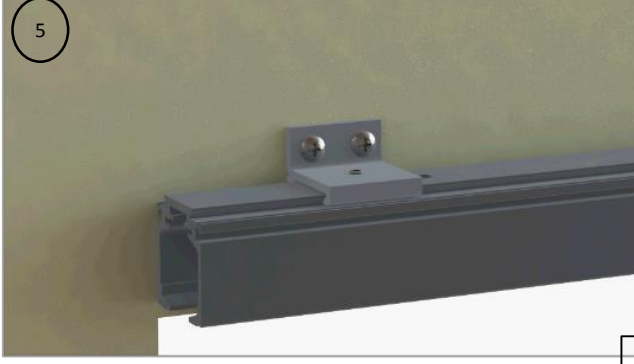
- 3. Butt brackets onto wall



- 4. Fix brackets with screws



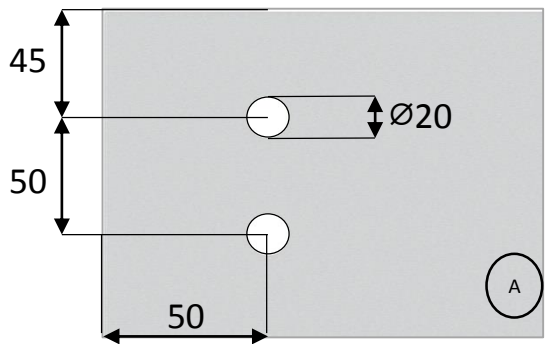
- 5. Secure track in place with socket screws



Step 4 Door preparation



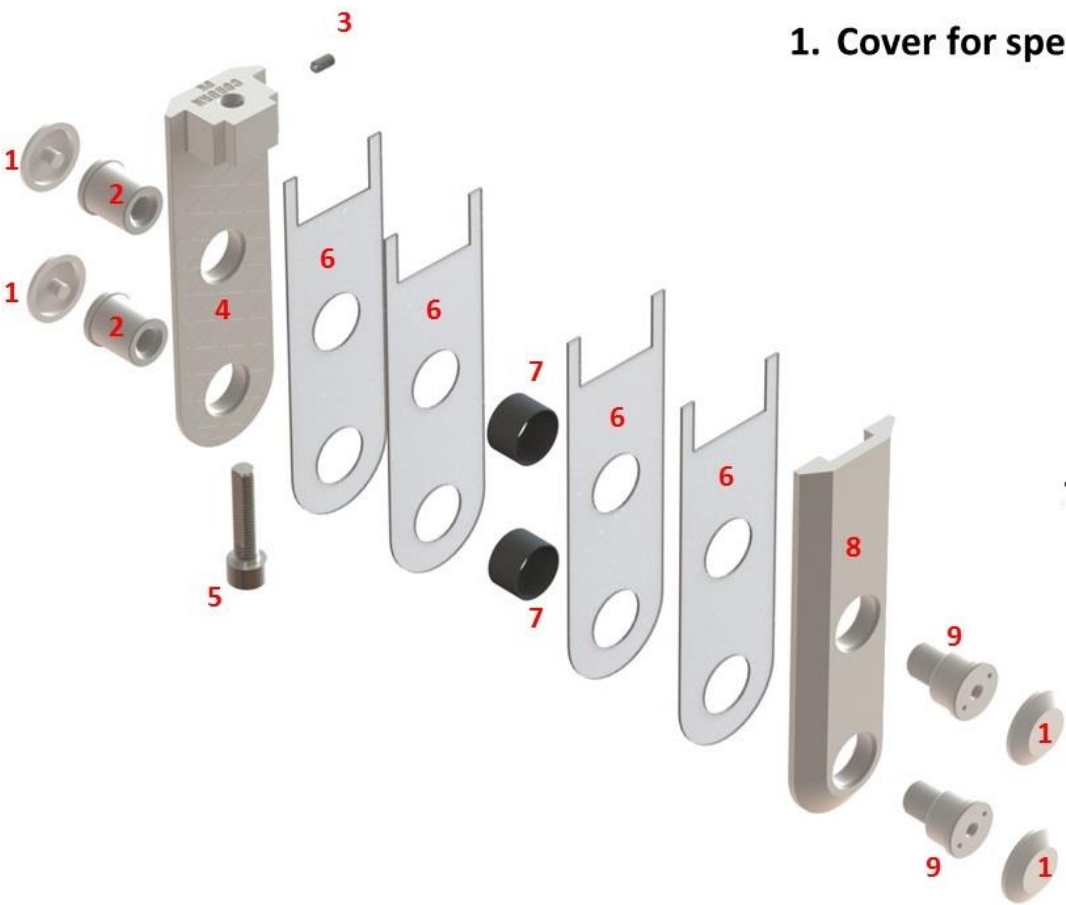
NOTE: We recommend to use safety (toughened/tempered/laminated) glass door



NOTE: We recommend that holes on glass to be drilled before toughening/tempering/lamination process. Please refer to the door manufacturer for details.

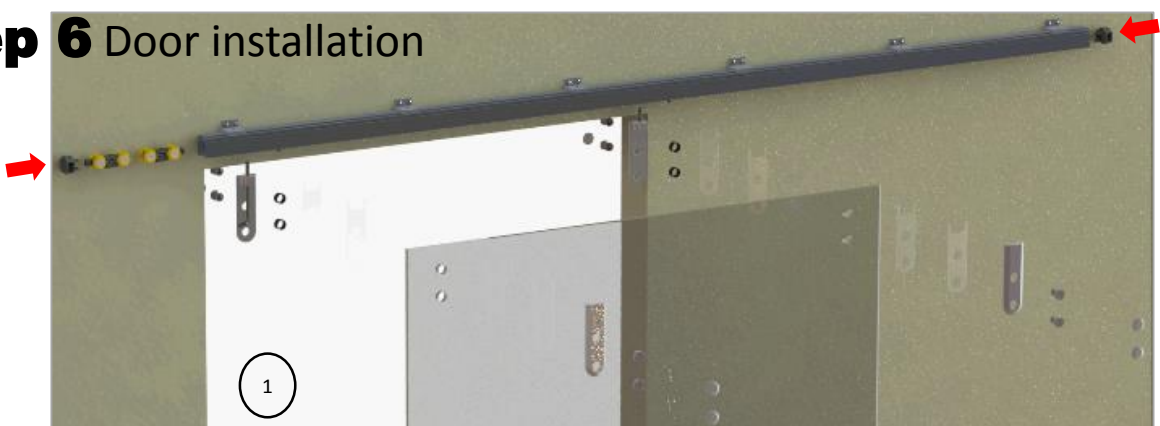
On each side of the door drill 2 x Ø20mm holes, 50mm from the edge and 50mm apart

Step 5 Identifying clamp components

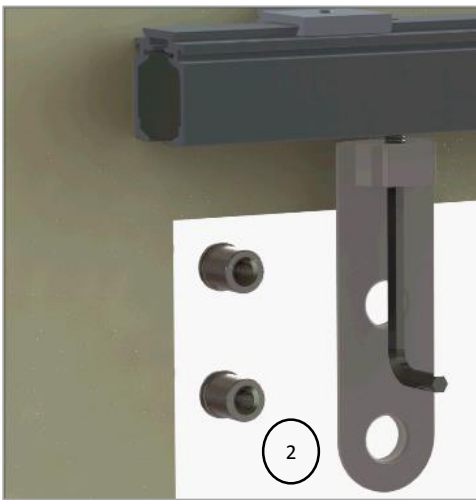


- 1. Cover for special screws and nuts
- 2. Special nuts
- 3. Socket screw
- 4. Clamp
- 5. Hanger bolt
- 6. Rubber spacers
- 7. Plastic protectors
- 8. Clamp cover
- 9. Special screws

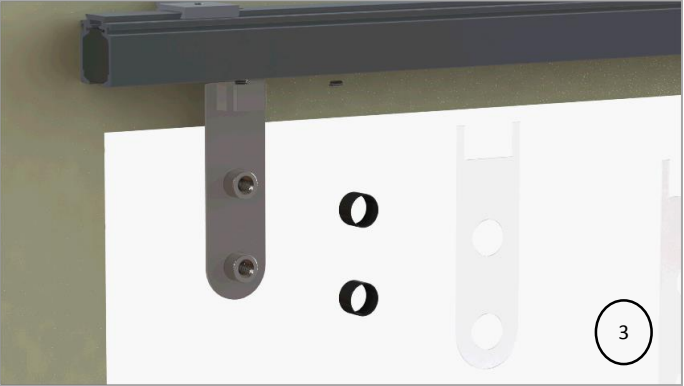
Step 6 Door installation



1. Slide components inside track

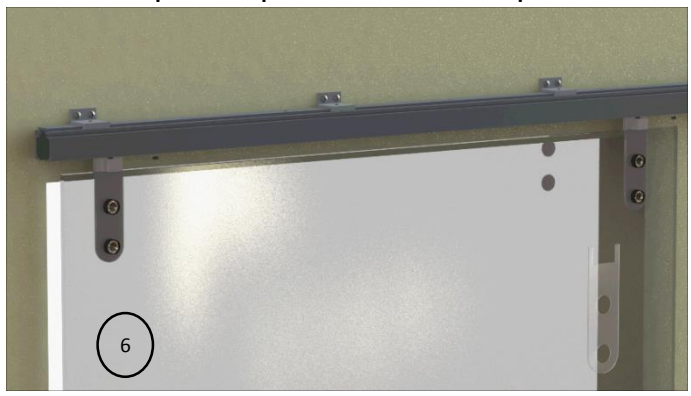


2. Insert hanger bolt assembled with the clamp inside the hanger



3. Insert special nuts inside clamp

4. Slide plastic protectors over special nut



5. Insert rubber spacer over plastic protectors.

6. Insert door into clamps

For door thickness of 10mm use 2 rubbers, they must be used on each side of the door

For door thickness of 12 mm use 1 rubber spacer on each side



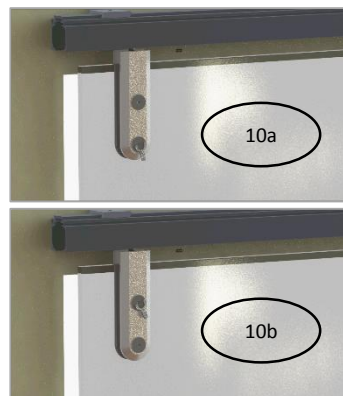
7. Place rubber spacer/spacers over door



8. Position clamp cover



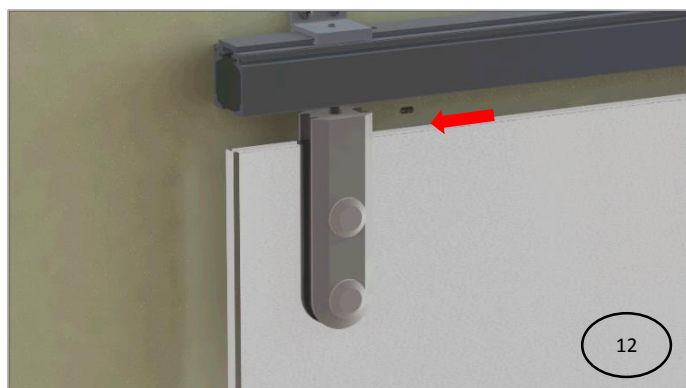
9. Secure clamp cover with special screws



10. Use special spanner supplied to tighten the special screws

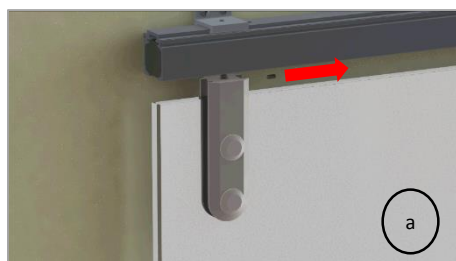


11. Install special covers for special nuts and screws



12. Secure hanger bolt with socket screw

Step 7 Door adjustment

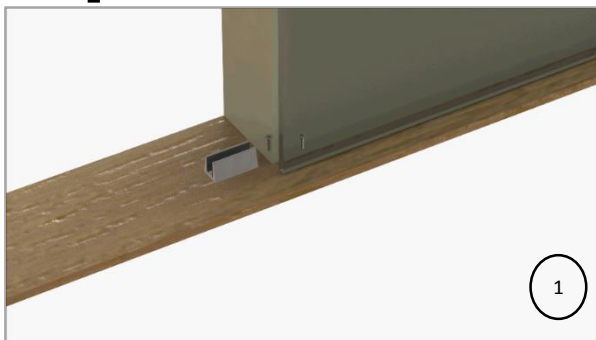


a. Remove/loosen socket screw

b. Adjust the level and height of door by rotating the hanger bolt

c. Tighten socket screw so that it will hold in place the hanger bolt

Step 10 Door adjustment



1. With the door fully closed, position the guide on the floor;
2. Slide the guide halfway;
3. Ensure the door is levelled and fix the guide with 1 screw
4. Fully close the door and fix second screw

Straightaway G130

Fitting instructions



Coburn Sliding Systems Limited

Unit 1, Cardinal West, Cardinal Way,

Godmanchester, PE29 2XN, United Kingdom

Phone: +44 (0)20 8545 6680

Fax: +44 (0)20 8545 6720

E-mail: sales@coburn.co.uk

www.coburn.co.uk