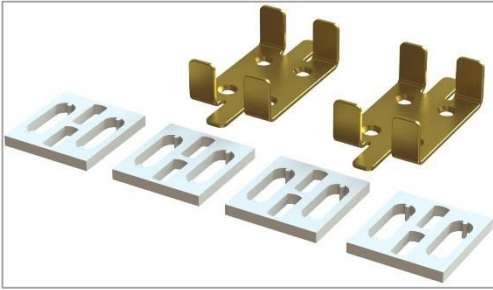


ADAPTOR KIT FITTING INSTRUCTIONS

COMPONENTS



61900 – ADAPTOR KIT, FOR DOORS 35mm TO 44mm THICK

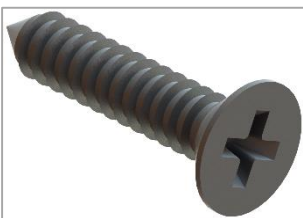
TOOLS REQUIRED



Power screw driver

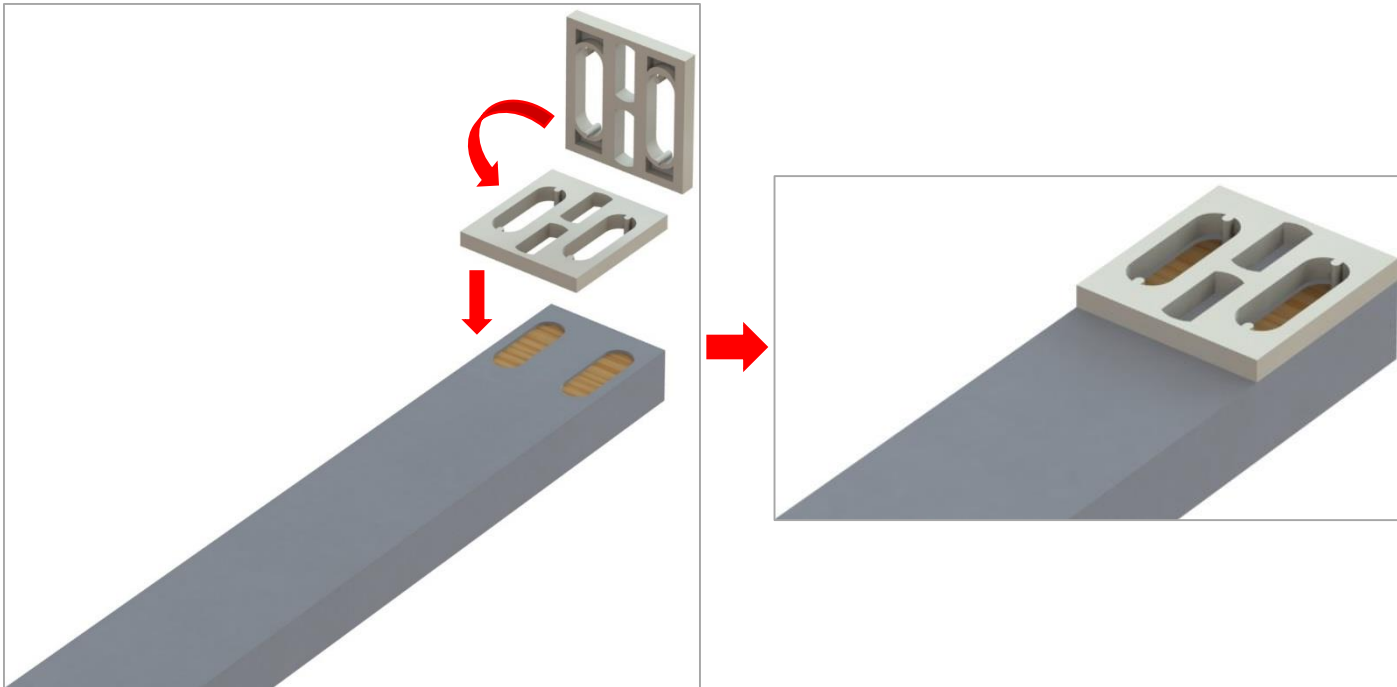


Pozi drive screw bit



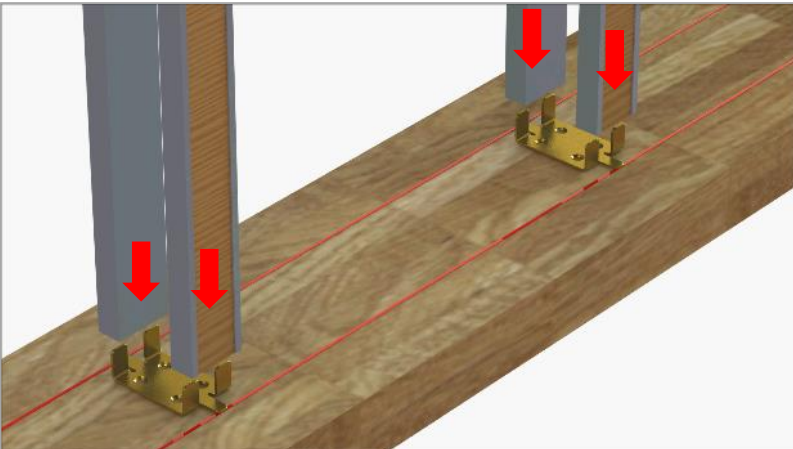
8x

Step 1 Prepare split stud

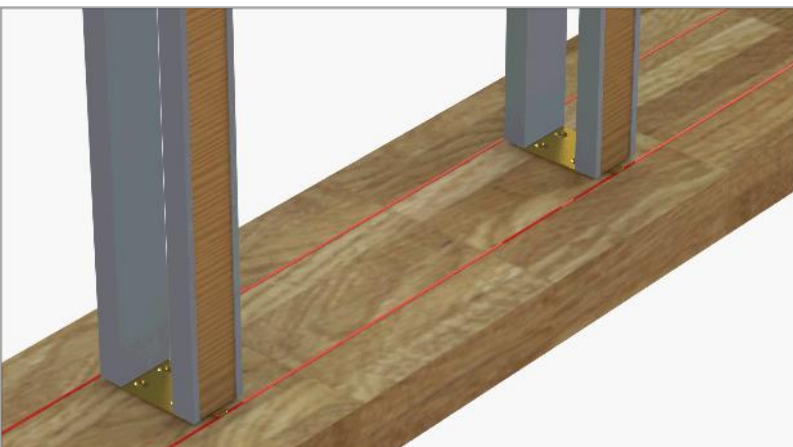


Before assembling split jambs to header, snap nylon spacer pads onto top end of each jamb
Place the plastic spacer pins facing the split stud slot and push it inside until you hear a CLICK sound.

Step 2 Fixing split studs into floor plate

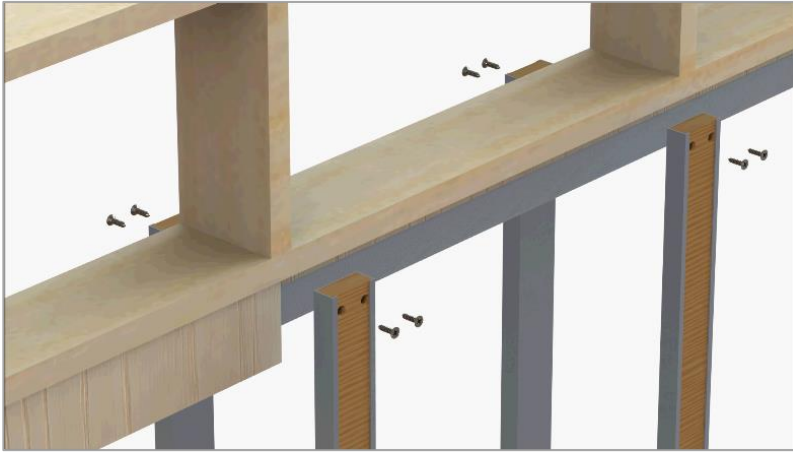


Split floor plate fingers into split studs.



DO NOT FIX THE PLATE TO THE FLOOR.

Step 2 Fixing split studs onto track

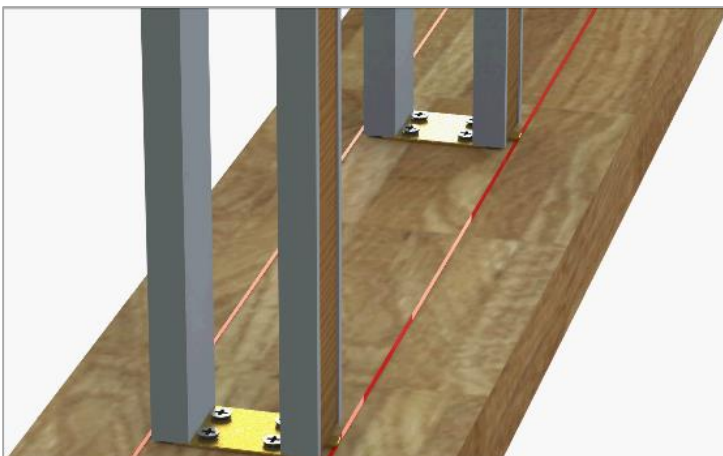
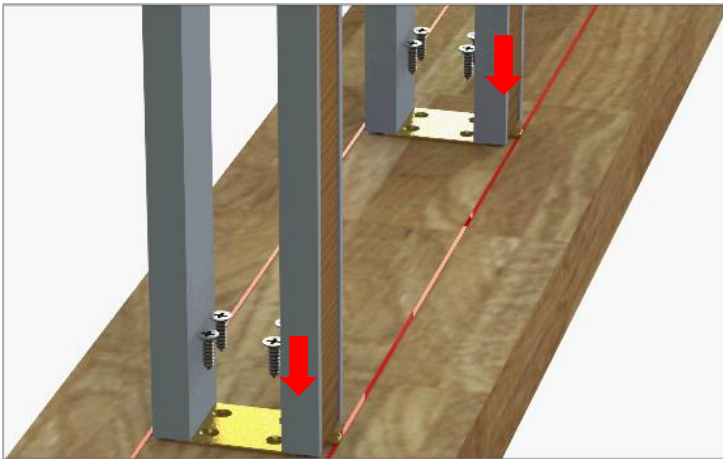


Fix the first set of split studs by butting them to the header and the track, make sure they are in a levelled position, and fix them with screws or nails.



Fix the second pair of studs by butting them to the track equally spaced between the first set and the back of the frame, make sure they are in a levelled position and fix them with screws.

Step 9 Fixing floor plates to floor



Ensure studs are levelled (on the front and on the side). To double check if everything is levelled the floor plate must be located in the middle of the chalk lines.

Secure the floor plate with screws.

Adaptor Kit

Fitting instructions



Coburn Sliding Systems Limited

Unit 1, Cardinal West, Cardinal Way,

Godmanchester, PE29 2XN, United Kingdom

Phone: +44 (0)20 8545 6680

Fax: +44 (0)20 8545 6720

E-mail: sales@coburn.co.uk

www.coburn.co.uk