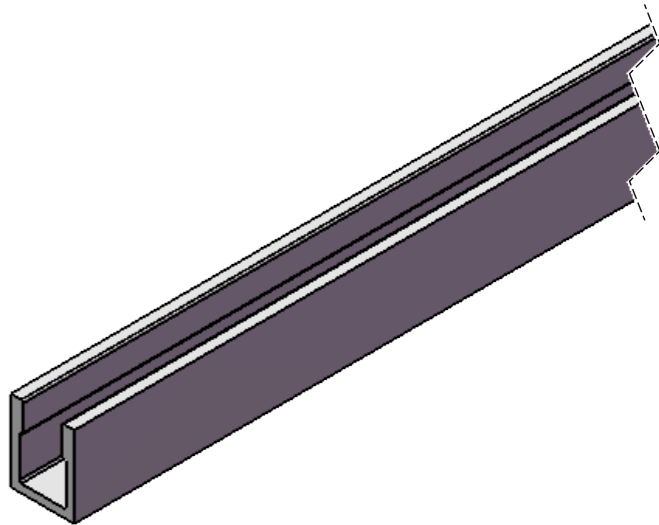
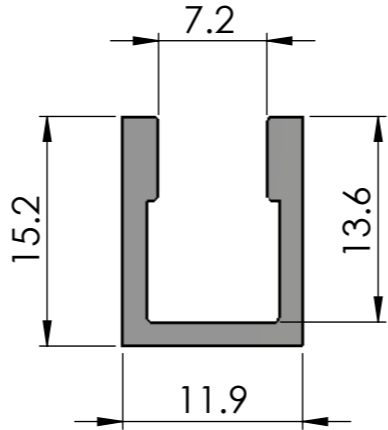


Aluminium Bottom Channel 41-2



Available in 3 sizes	
Part no	Size
41260	6m
41224	2.4m
41236	3.6m

COBURN
SLIDING SYSTEMS

HILLALDAM COBURN LTD
UNIT 16, MERTON INDUSTRIAL PARK
LEE ROAD, LONDON
SW19 3HX,
UK
TEL:+44 (02)0 8545 6680 FAX:+44 (02)0 8545 6723
E-Mail:sales@hillaldam.co.uk
Web:www.coburn.co.uk
© COPYRIGHT HILLALDAM COBURN LTD

THE INFORMATION CONTAINED IN THIS DRAWING IS THE SOLE PROPERTY OF <HILLALDAM COBURN LTD>. ANY REPRODUCTION IN PART OR AS A WHOLE WITHOUT THE WRITTEN PERMISSION OF <HILLALDAM COBURN LTD> IS PROHIBITED.

MATERIAL
Aluminium

FINISH
Mill

UNLESS OTHERWISE SPECIFIED:

DIMENSION(mm) TOLERANCE
ZERO PL DECIMAL ±0.2
ONE PL DECIMAL ±0.1
TWO PL DECIMAL ±0.05

ANGULAR TOLERANCE ±0.5°

FORGING TOLERANCE SEE BS 4114

COMMENTS: REMOVE ALL SHARP EDGES AND BURRS

DRAWN DATE
MUS 26/01/2012

CHECKED DATE
26/01/2012

DIMENSIONS ARE IN mm
DO NOT SCALE DRAWING

FILE DRG. No.
3/ 442/ 000

TITLE:
**Bottom Channel
41-2 for Straightaway
250**

SIZE A4	DRG/PART. No. 41-2	REV 01
SCALE: NTS	WEIGHT:	SHEET: 1/1