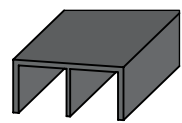
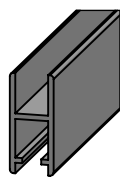


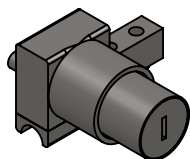
# KABINETTE INSTALLATION INSTRUCTIONS



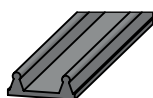
Top alu E-Track



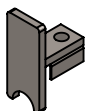
Glass alu H-Profile



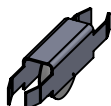
Push cylinder lock



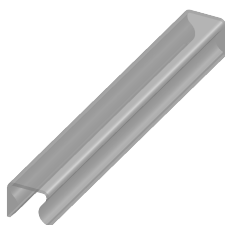
Bottom alu track



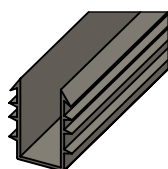
End cap



Trolley with  
nylon wheels



Silencer



U-Spline

## SIZE CALCULATION FOR EACH GLASS PANEL

Height = Full opening height (H) - 25mm

Width = Half of full opening + 25mm

(This should allow an **overlap of 50mm**)

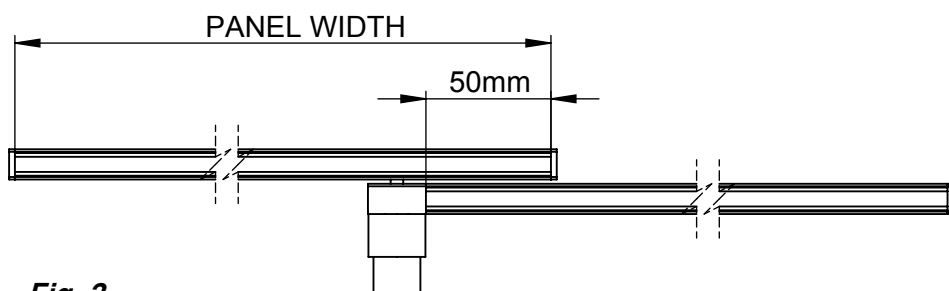


Fig. 2

## FEATURES:

- Double sliding glass doors on aluminium rails.
- Quiet rolling action.

## PANEL SPECIFICATION:

Thickness	6mm
Weight	12kg Maximum per panel 18kg Maximum per panel (with extra roller kit)
Height	1000mm Maximum per panel
Width	1050mm Maximum per panel
Glass panel must not exceed 0.8m <sup>2</sup>	
For panels over 12kg, additional Trolley wheels should be used (available to order).	

## COMPONENTS

Top alu E-Track (2mtrs)	1
Glass alu H-Profile (2mtrs)	2
Push cylinder lock	1
Bottom alu track (2mtrs)	1
End cap	3
Trolley with nylon wheels	8
Silencer, clear plastic (3cm)	4
U-Spline plastic (2mtrs)	1

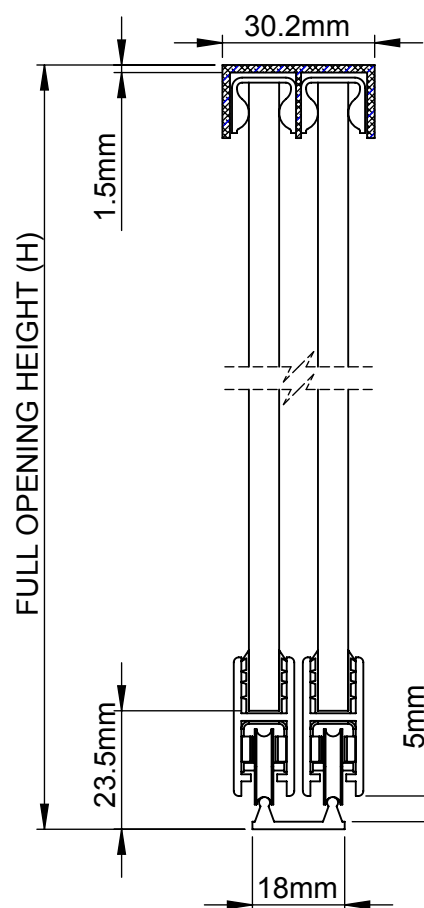
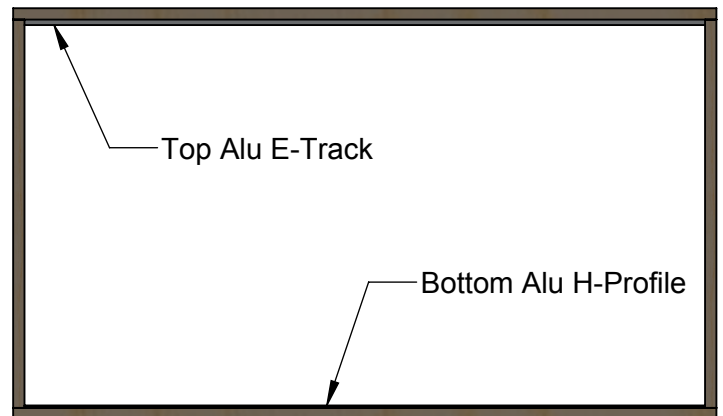


Fig. 1

Make sure that all parts have been received.

**Step 1.**

Cut the Top E-Track and the Bottom Track to the size of the width opening. Fit Top E-Track and Bottom track to the aperture ensuring they are secure. See fig. 3.



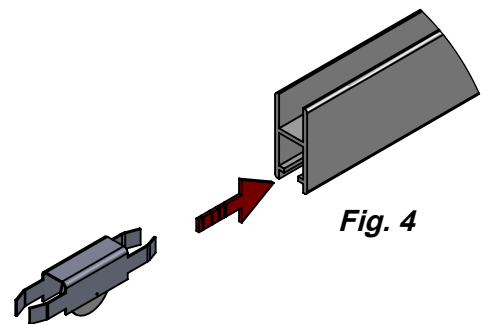
**Fig. 3**

**Step 2.**

Cut the Glass H-Profile to allow for an overlap of the doors. To achieve a 50mm overlap, divide the width of the aperture in half and add 25mm. As shown in fig. 2.

**Step 3.**

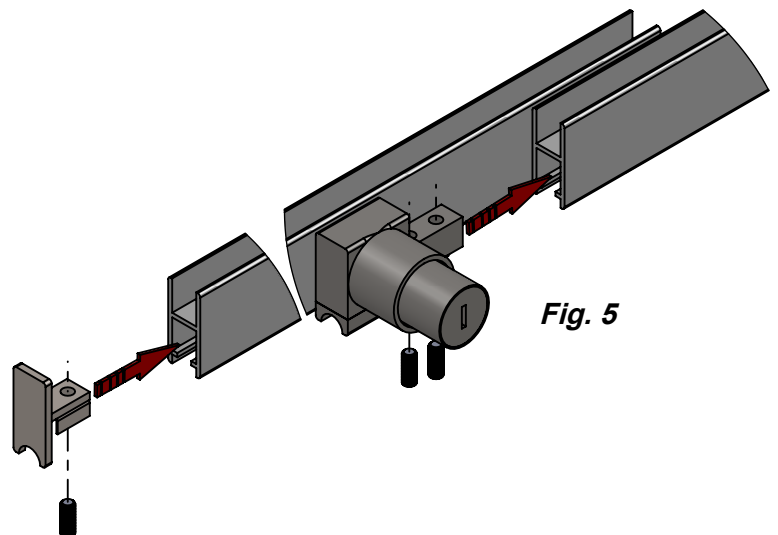
Slide the Trolleys into the Glass H-Profile from the ends, see fig. 4. Each trolley has a load capacity of 3kg, therefore 4 trolleys are required for a glass panel of 12kg maximum load.



**Fig. 4**

**Step 4.**

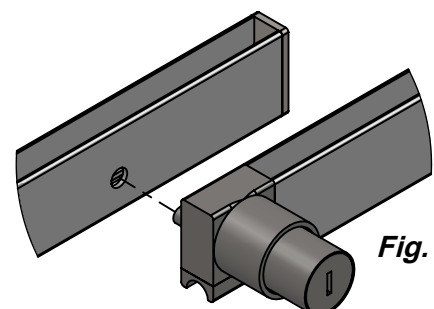
Fit the Lock and End Caps to the Glass H-Profiles locking them in place using the grab screws. See fig. 5.



**Fig. 5**

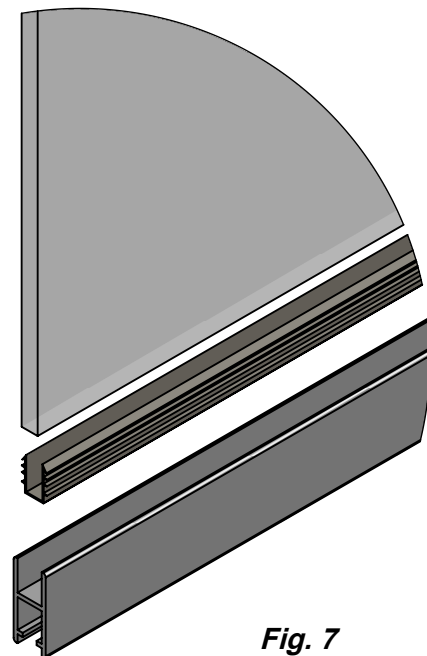
**Step 5.**

Place the Glass H-Profiles on the Bottom Track in the closed position and mark where the pin of the lock locates on the opposing Glass H-Profile, as shown in fig. 6. Drill a 6mm locating hole ensuring the Trolley does not interfere with the drilling. Re-assemble the H-Profile on the Bottom Track and check the fit of the lock against the hole.



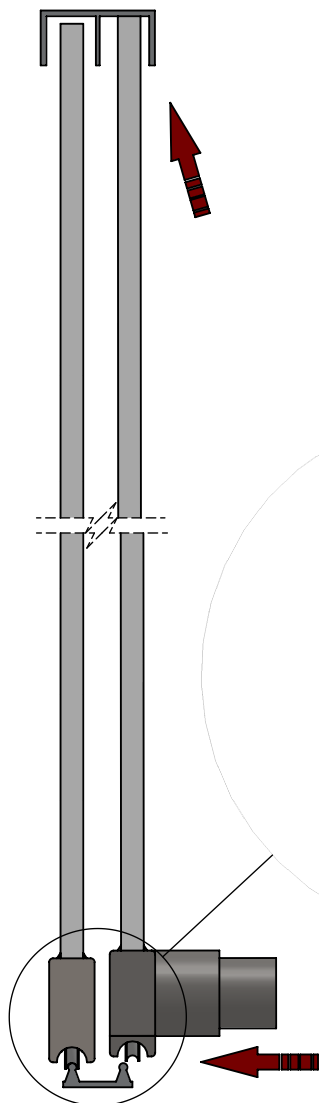
**Fig. 6**

**Step 6.**  
The U-Spline is used to ensure a tight fit for the glass in the H-Profile. Measure and cut the required length to fit the H-Profiles. Place the U-Spline on the bottom edge of the glass panel and press it into the H-Profile, as shown in fig. 7. Trim any excess on the sides.



**Fig. 7**

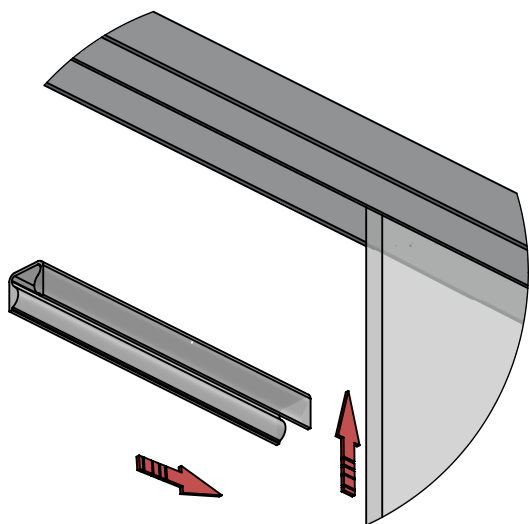
**Step 7.**  
Once the doors are assembled, fit them into position by lifting the assembly into the Top E-Track and lowering it on to the Bottom track. See fig. 8



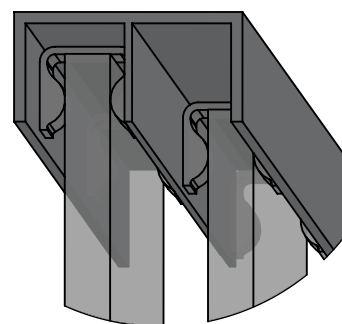
**Fig. 8**

**Step 8.**  
Fit the Silencers to the top corners of the doors by simply sliding them into position, see fig. 9 & 10. Once the Silencers are fitted it should be impossible to lift the doors out of the Top E-Track without removing the silencers.

If you experience any problems please contact Hillaldam Coburn for advice.



**Fig. 9**



**Fig. 10**

