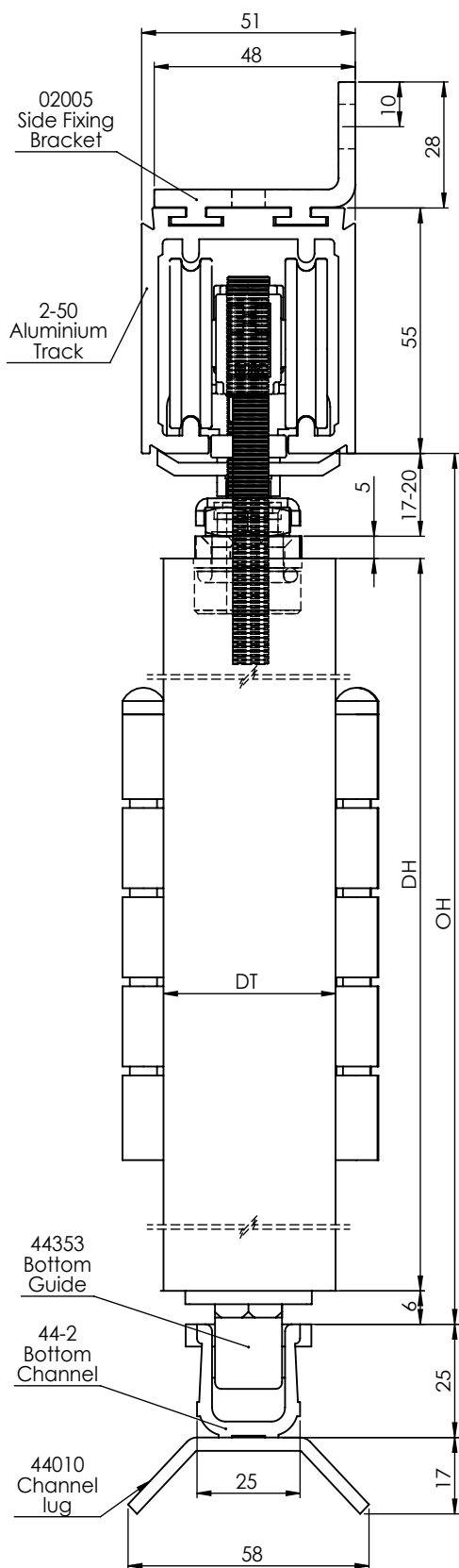


FOLDASIDE 75

FITTING INSTRUCTIONS

Foldaside 75

Side view



Maximum door weight 75kg

DH - Door Height, maximum 3000mm

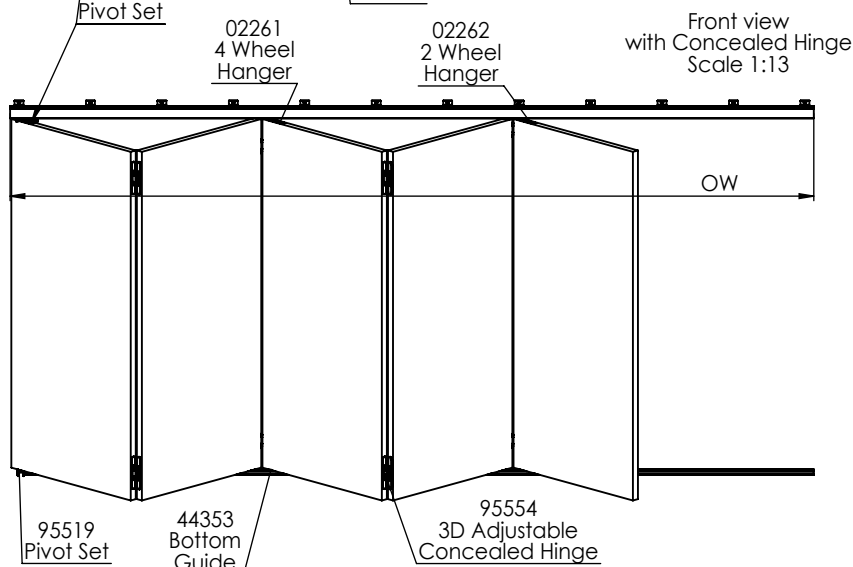
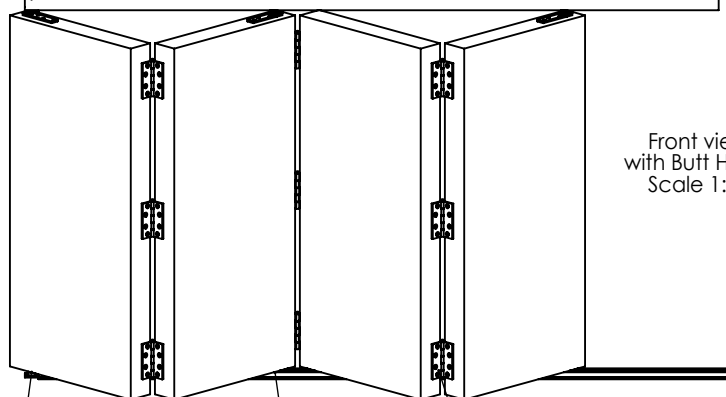
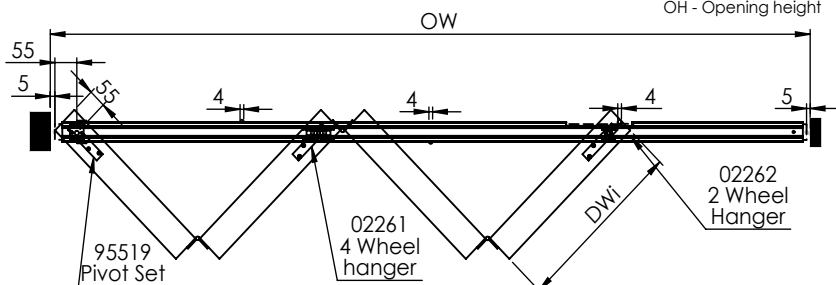
DW - Door width, maximum 950mm

DT - Door thickness, between 30mm and 55mm

OW - Opening width

OH - Opening height

Top view
Scale 1:13



ACCESSORIES



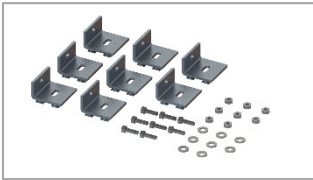
25024-30-36-40-60 – ALUMINIUM TRACK



02004 – SIDE FIXING BRACKET



02005 – SIDE FIXING BRACKET, PACK OF 5



02006 – SIDE FIXING BRACKET, PACK OF 8



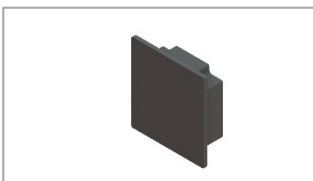
02261 – 4 WHEEL INTERMEDIATE HANGER, SINGLE



02262 – 2 WHEEL END HANGER, SINGLE

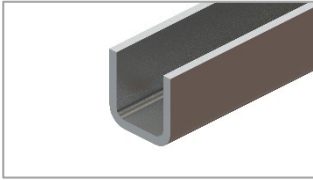


95519 – TOP AND BOTTOM PIVOT ASSEMBLIES

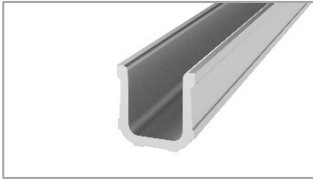


27402 – END CAPS FOR 2-50 TRACK, PAIR

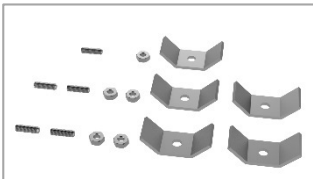
ACCESSORIES



44115-18-21-24-30-40 – STEEL CHANNEL



44215-18-21-24-30-36-60 – ALUMINIUM CHANNEL



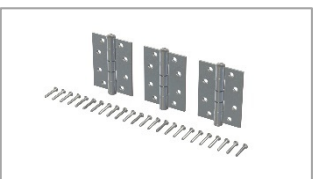
44010 – CHANNEL LUG, PACK OF



44353 – NYLON GUIDE



95554 – 3D ADJUSTABLE CONCEALED HINGE - PACK OF 2



95549 – SATIN STAINLESS STEEL BUTT HINGE, 102X76 - PACK OF 3

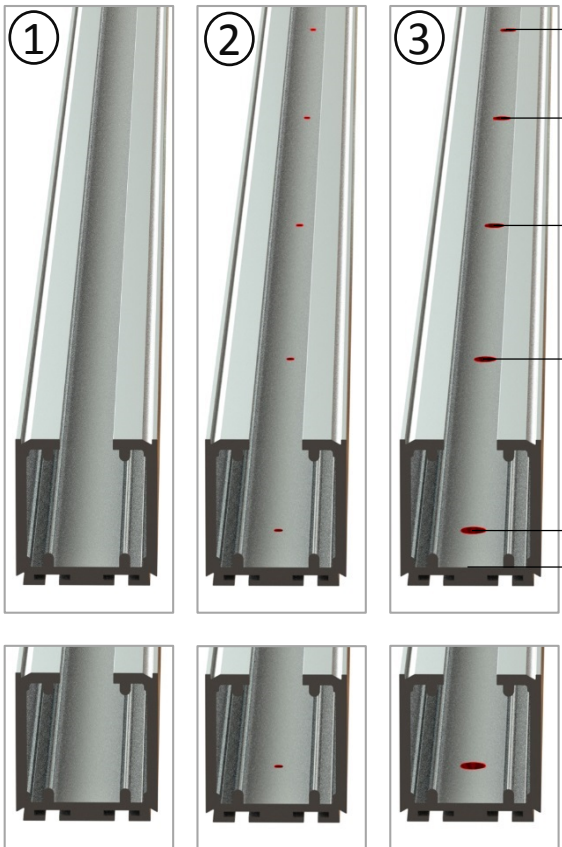


95669, 95699 – ANODIZED GOLD FLUSH BOLT, 150mm



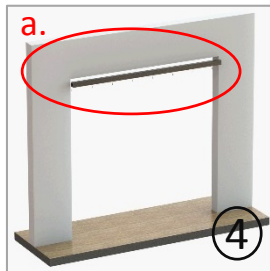
95695 – SILVER POWDER COATED, FLUSH BOLT, 150mm

Step 1 Soffit Fixing



d = 275mm – 300mm

Drill $\varnothing 6.5\text{mm}$ holes and countersink



Only for the stacking (opening) side

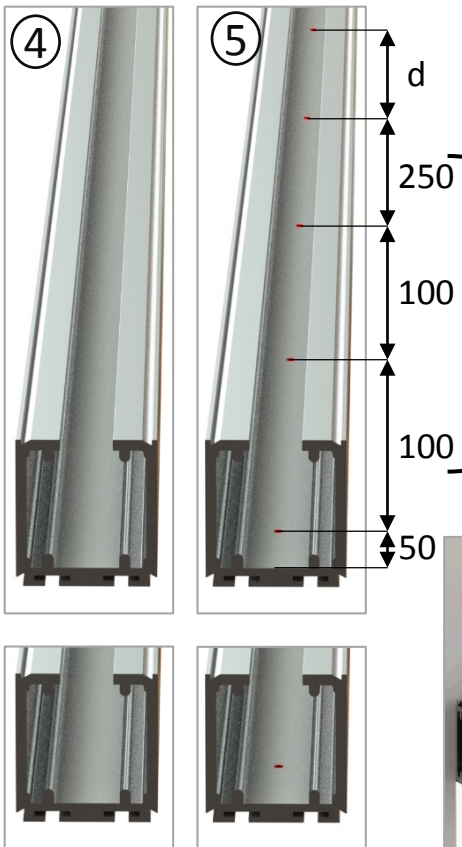
Go underneath the opening, insert the track into place and secure with screws



NOTE: Insert hardware into track prior to mounting if access is restricted afterwards.



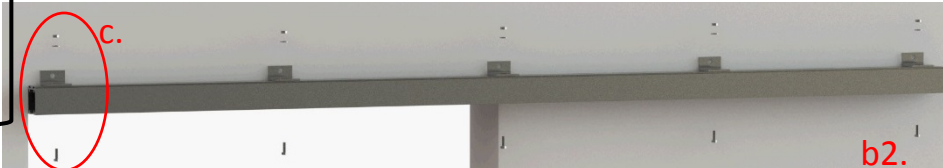
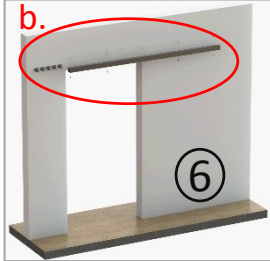
Step 2 Side Fixing



d = 450mm – 550mm

Drill $\varnothing 6.5\text{mm}$ holes

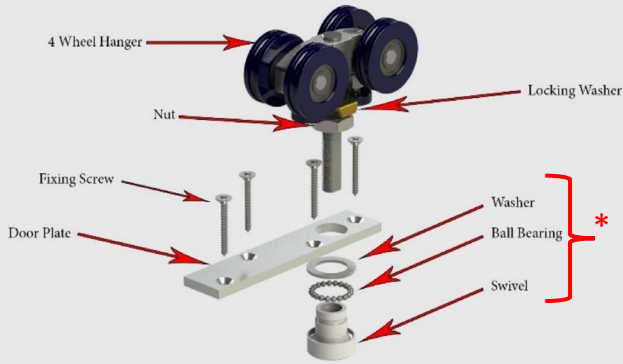
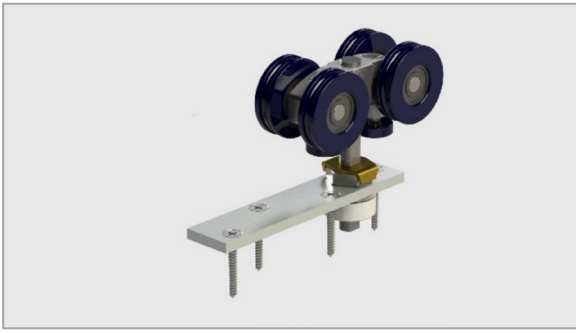
Only for the stacking (opening) side



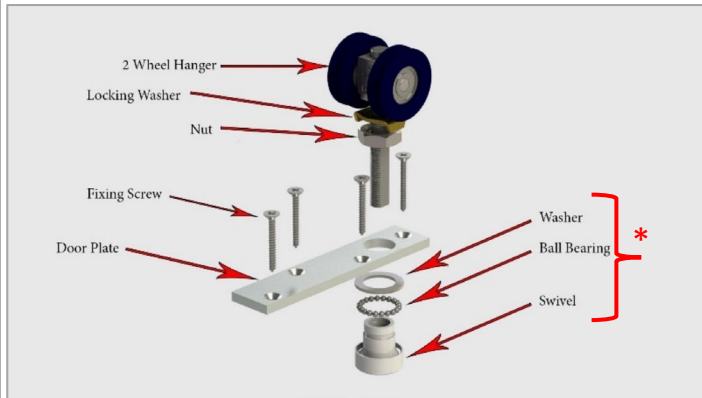
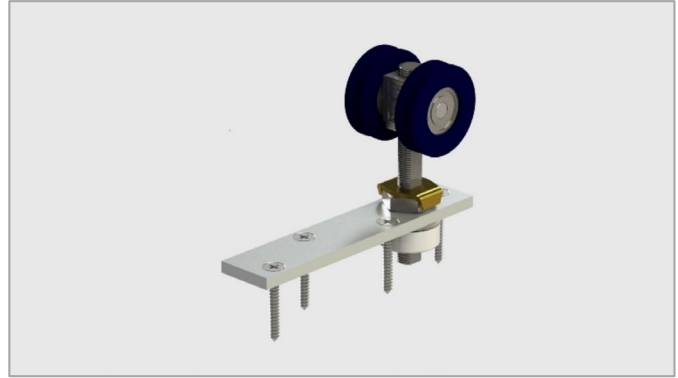
Slide brackets onto track and fix them with screw supplied (c1. and c2.). With track in a levelled position mark hole position (c3.), drill hole (c4.) and secure with screws (c5.).

Step 3 Identifying Hanger

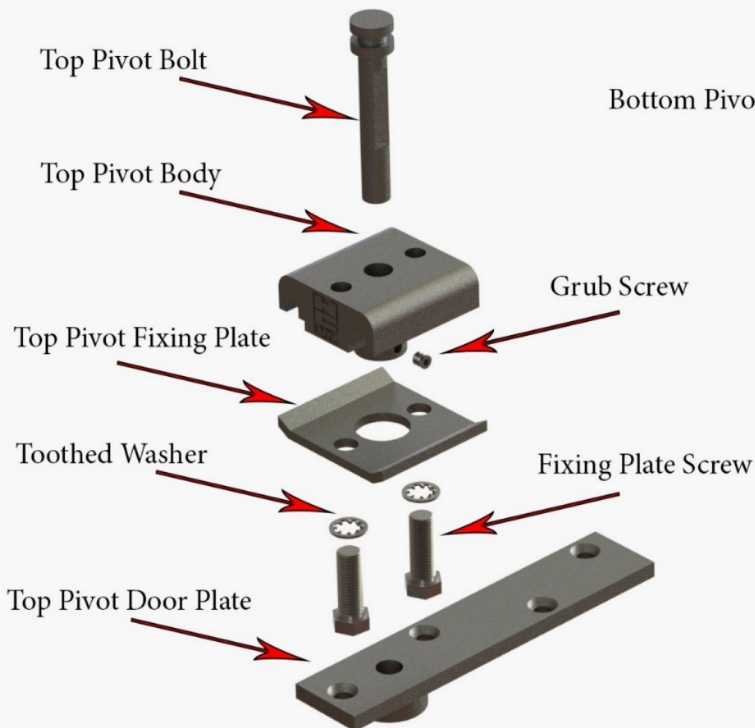
02261 4 Wheel Hanger



02262 2 Wheel Hanger



95519 Pivot set



NOTE: To be assembled before using

Step 4 Door Preparation

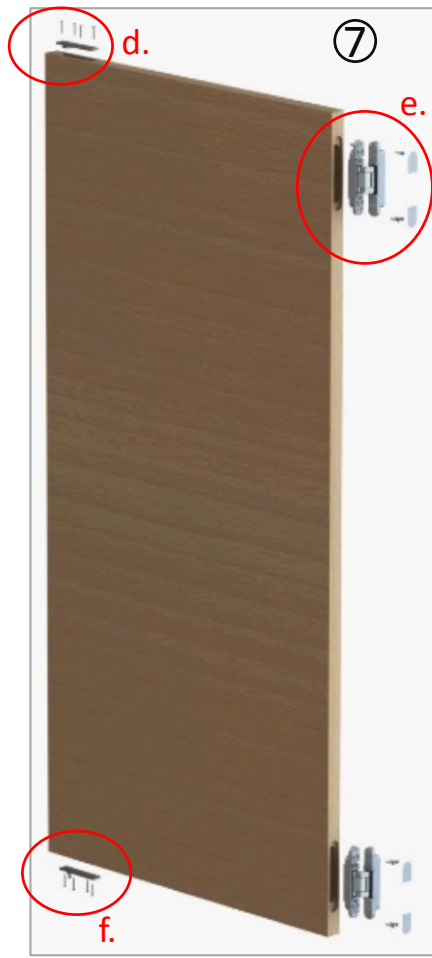
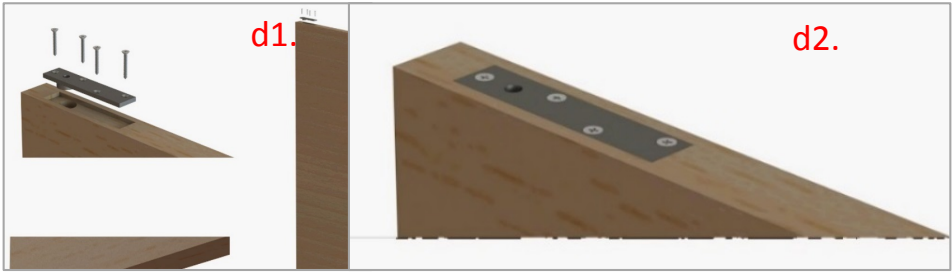


Fig. 7 – Pivot door is equipped with top and bottom pivot and a hinge set
 Fig. 8 – 2 or 4 wheel hanger door is equipped on top with a hanger, with a guide on bottom and 2 hinge sets
 Fig. 9 – Door is equipped with 2 hinge sets
 Fig. 10 – Final door with hanger is equipped with a hanger on top, with a guide on bottom and 1 hinge set
 Fig. 11 – Swing door is equipped with 1 hinge set

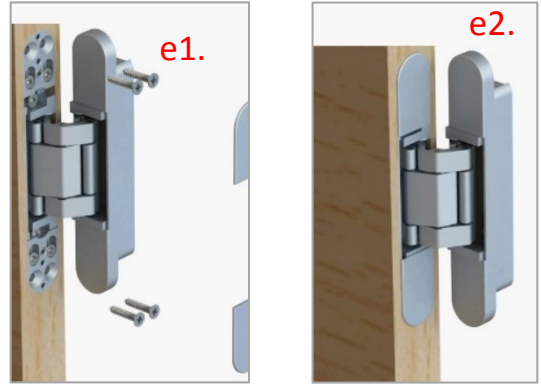
Door configuration	Figure to use
2 Door	7 + 10
3 Door	7 + 8 + 11
4 Door	7 + 8 + 9 + 10
5 Door	7 + 8 + 9 + 8 + 11
6 Door	7 + 8 + 9 + 8 + 9 + 10

Top pivot Door Plate

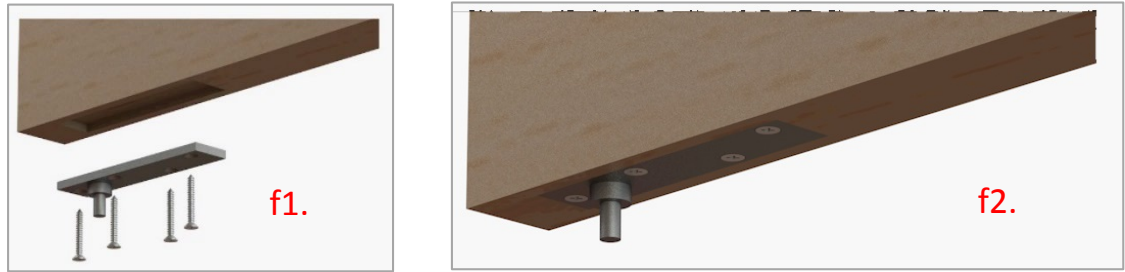
For cut-out details see page 10 and 11



Hinge



Bottom Pivot Door Plate



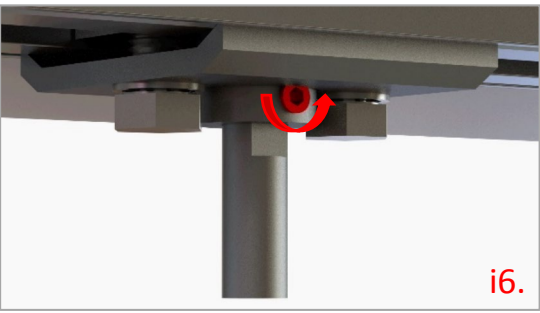
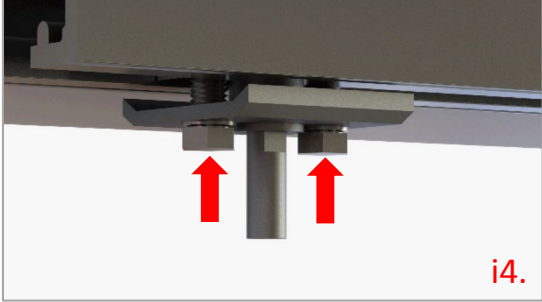
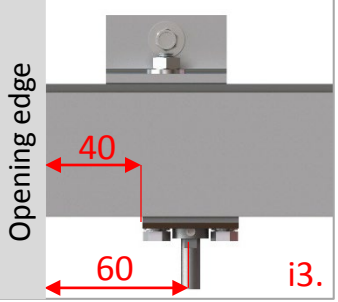
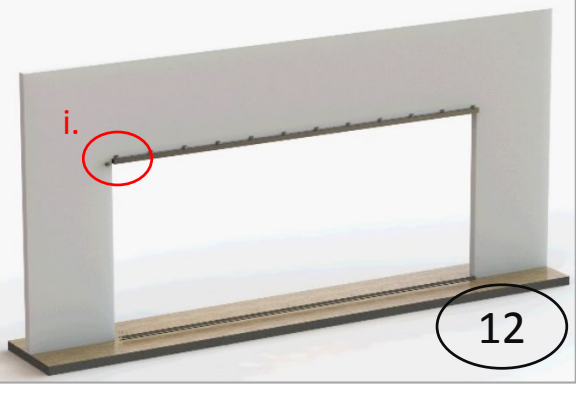
2 or 4 Wheel Hanger Plate



Bottom Guide

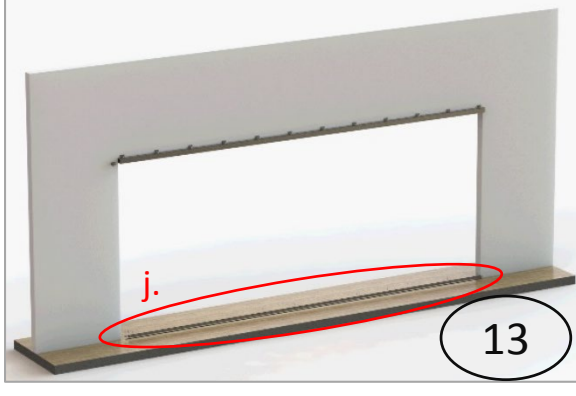


Step 5 Top pivot installation

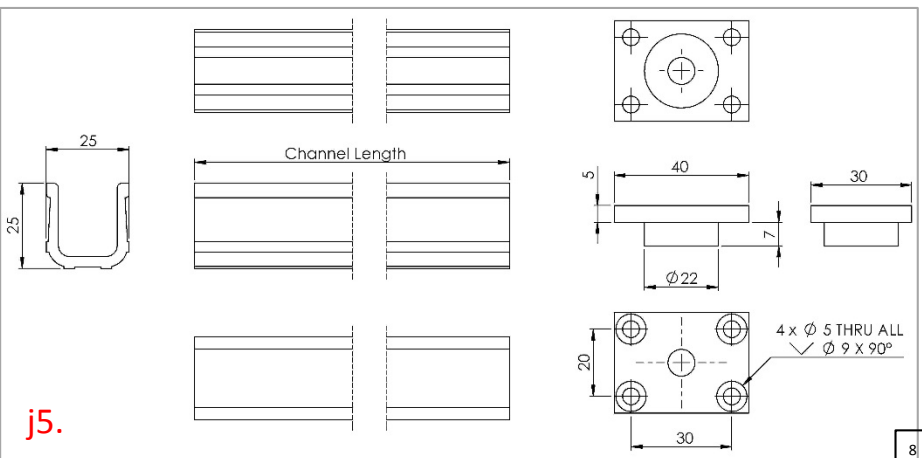


Insert top pivot assembly into track (i1., i2. and i3.).
 Secure pivot position with fixing plate by tightening screws (i4. and i5.). Loosen grub screw (i6.), raise top pivot bolt and use grub screw to hold pivot bolt in up position.

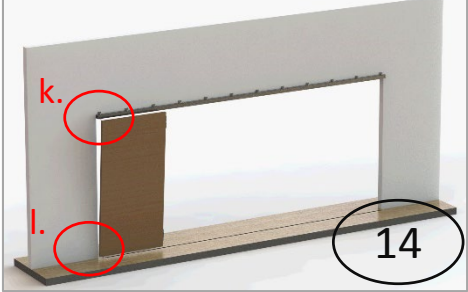
Step 6 Bottom Pivot Floor Plate and Channel installation



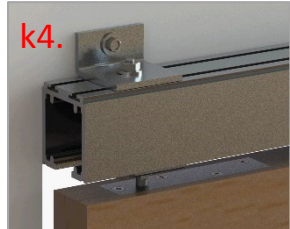
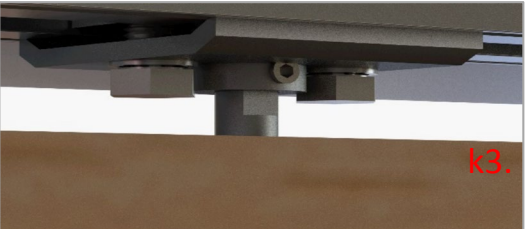
Butt bottom pivot floor plate to channel (j2. and j3.) and secure them with screws into floor (j3. and j4.). See j5. for cut-out details.



Step 7 Installing Pivot Door

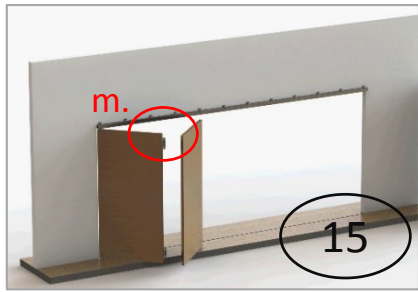


Insert the bottom pivot door plate pin into floor plate (l1. and l2.). Straighten door and lower top pivot bolt into top pivot door plate by loosening grub screw, ensure bolt is all the way down by pushing it from the top and secure bolt position by tightening grub screw (k3.).

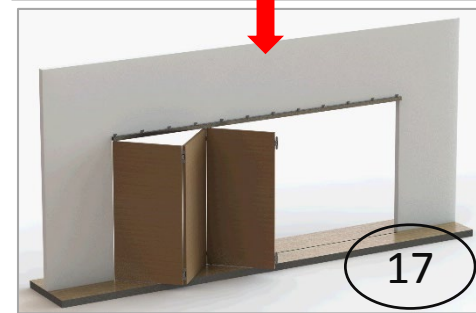
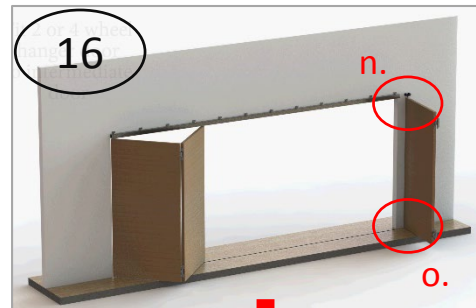


Step 8 Installing Intermediate Door

Insert hinges into door (m1. and m2.), remove hinge caps (m2.), secure hinges with screws (m3.) and refit caps (m3.). See page 12 for hinge adjustments.

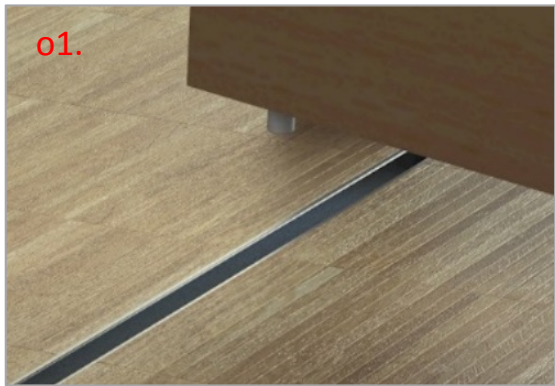


Step 9 Installing Hanger Door

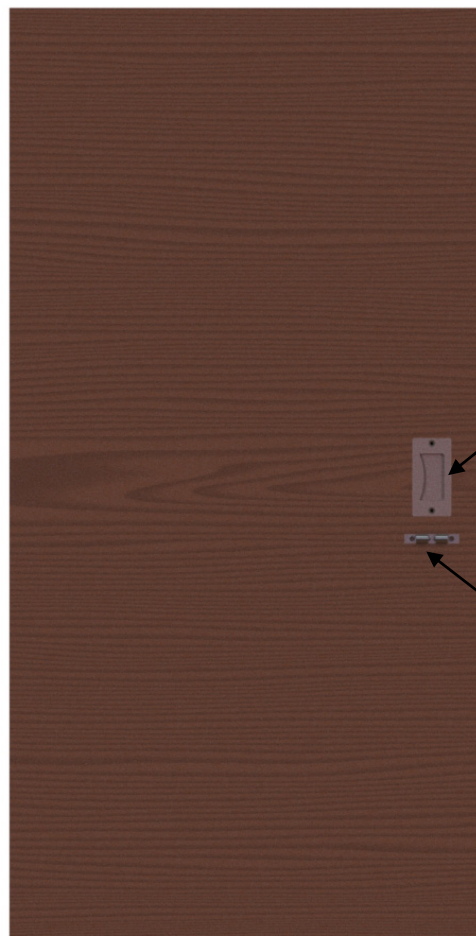


Insert bottom guide into channel (o1. and o2.) and slide hanger into track (n1. and n2.)

NOTE: In the case of hangers already being inside track, insert bottom guide into channel, position door plate under hanger bolt and connect the two parts



Step 10 Installing the hold back catch



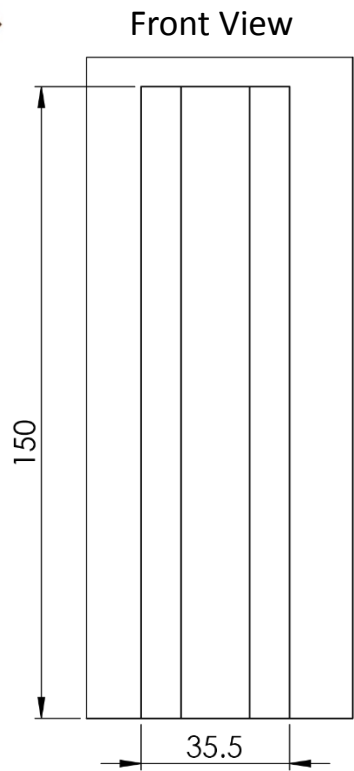
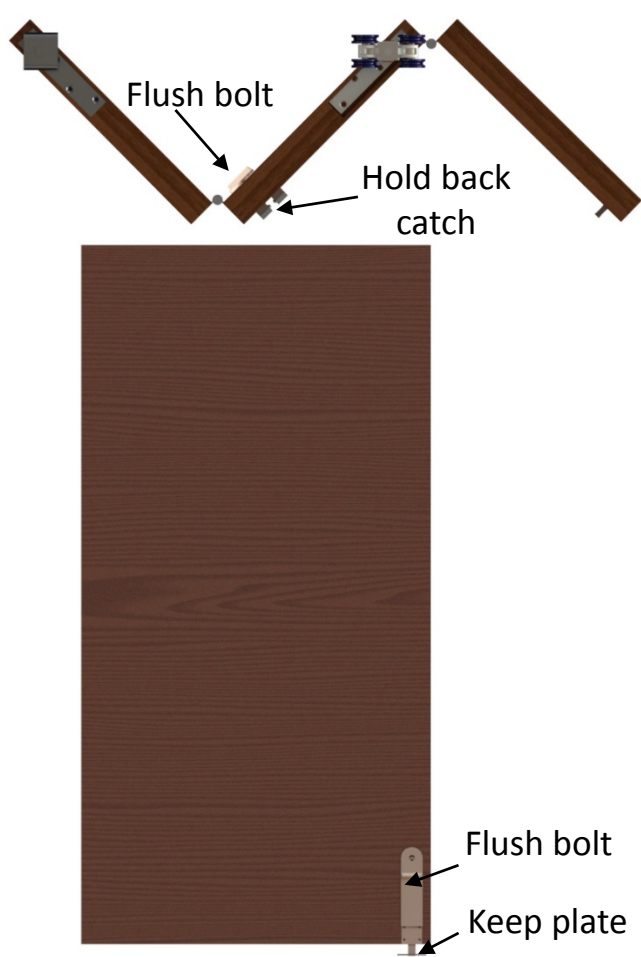
95612 – Flush Handle

95663 – Hold back catch

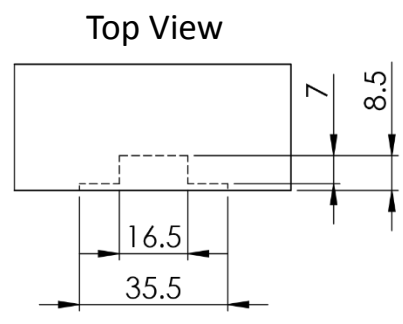
NOTE: A hold back catch is compulsory for 3 door and 5 door configurations

Step 11

Installing the flush bolt and cut out details



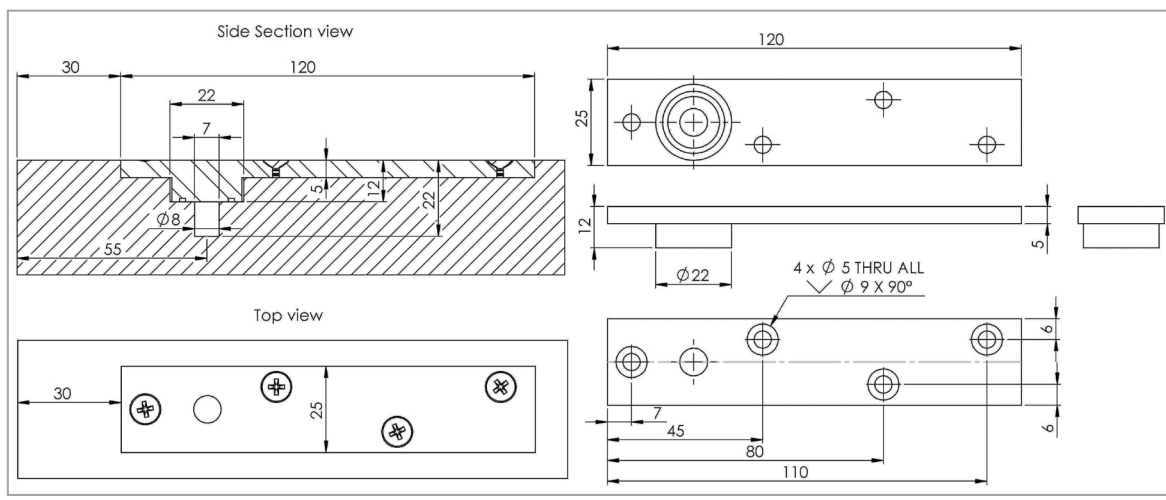
NOTE: A flush bolt is compulsory if the bottom channel is not being used.



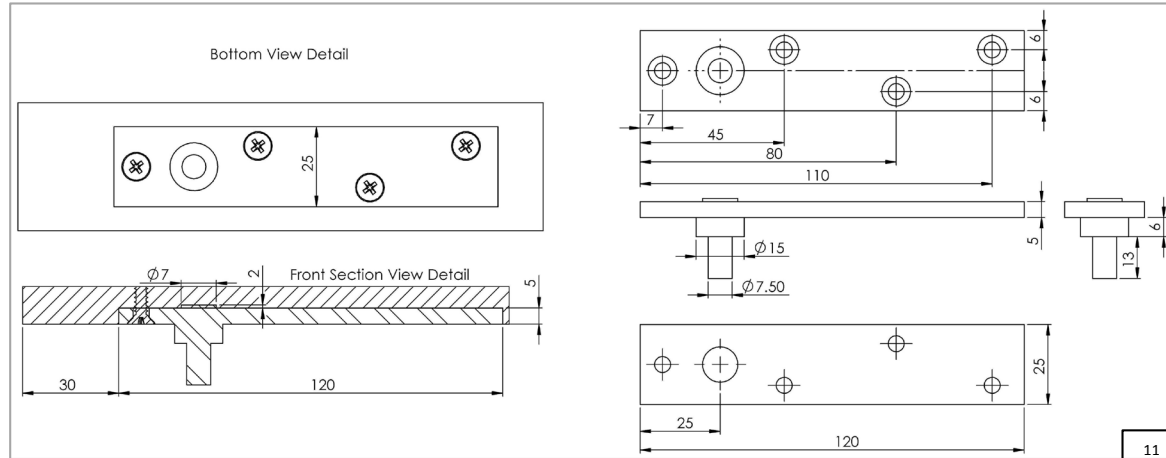
Cut-out Details

NOTE: In assembly drawings/sections dimensions are from edge of door NOT from edge of opening

Top Pivot Plate Cut-out

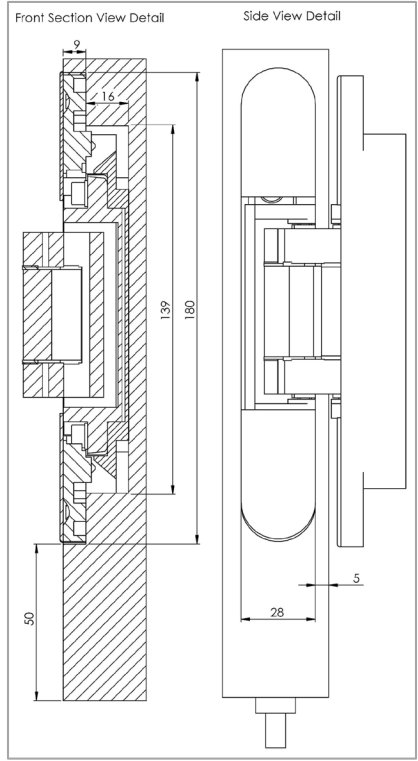
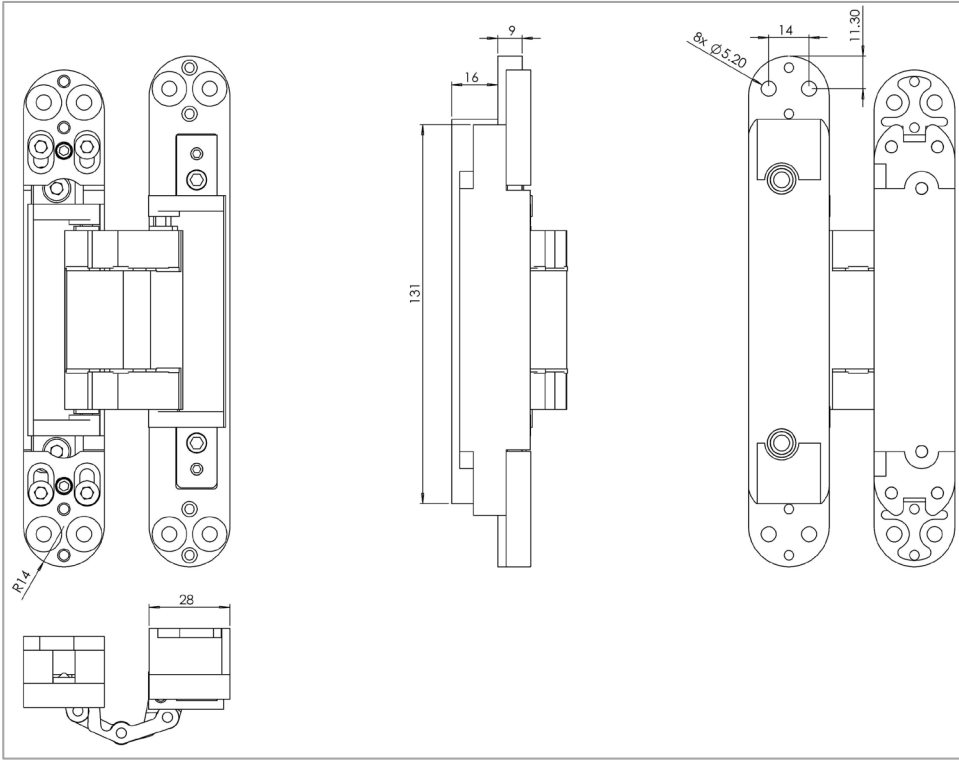


Bottom Pivot Plate Cut-out

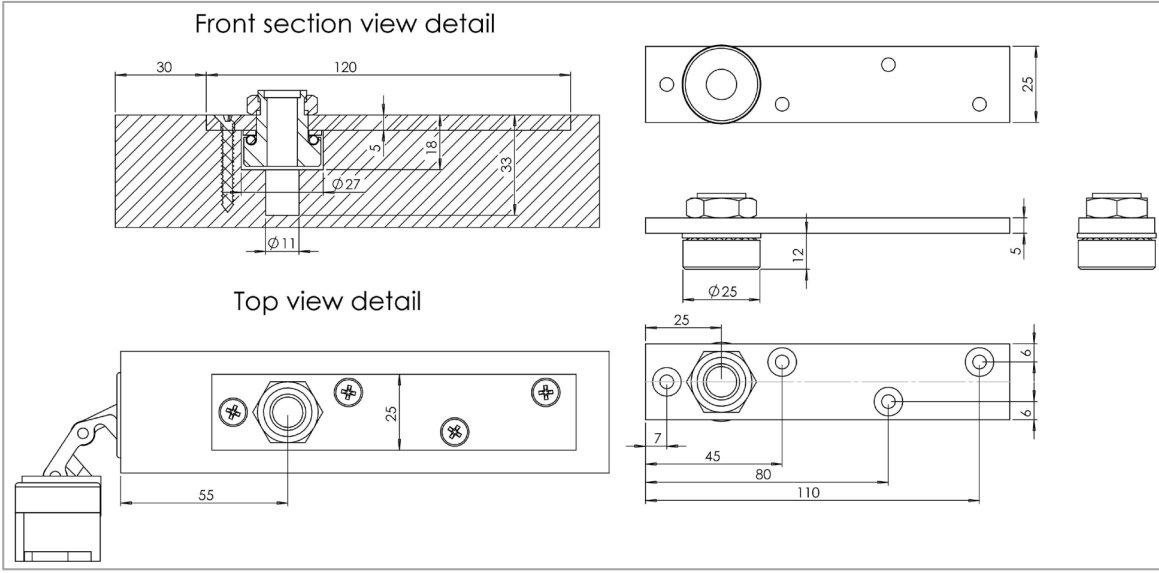


Cut-out Details

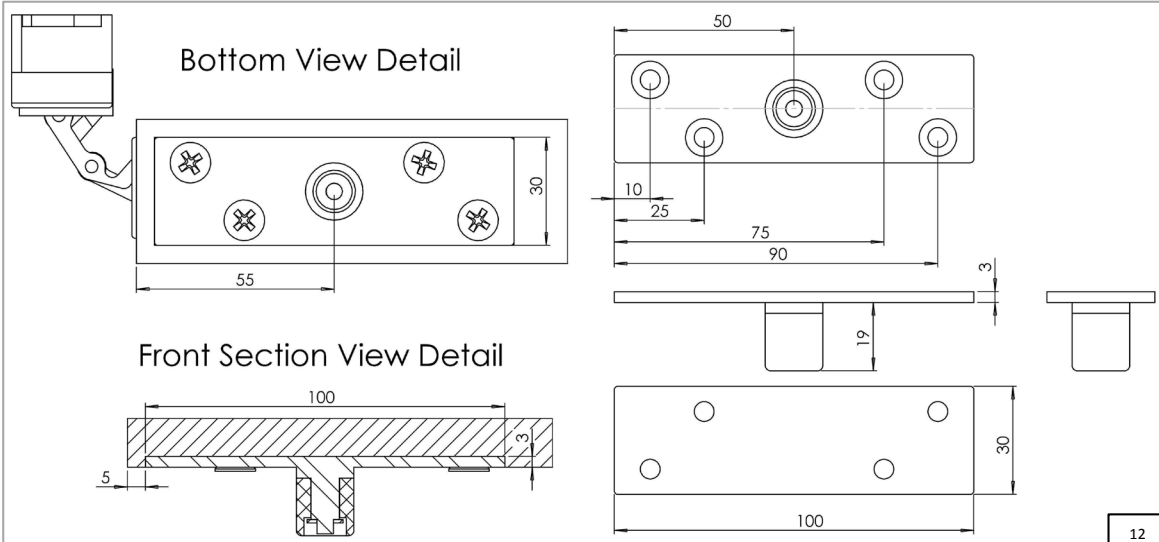
Hinge Cut-out



Hanger Plate Cut-out



Bottom Guide Cut-out

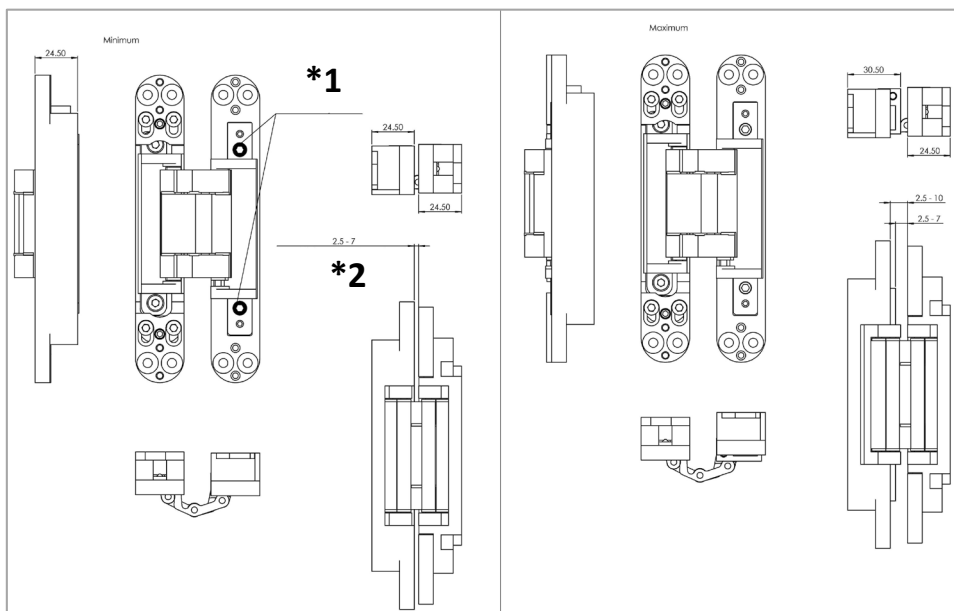


Hinge Adjustments

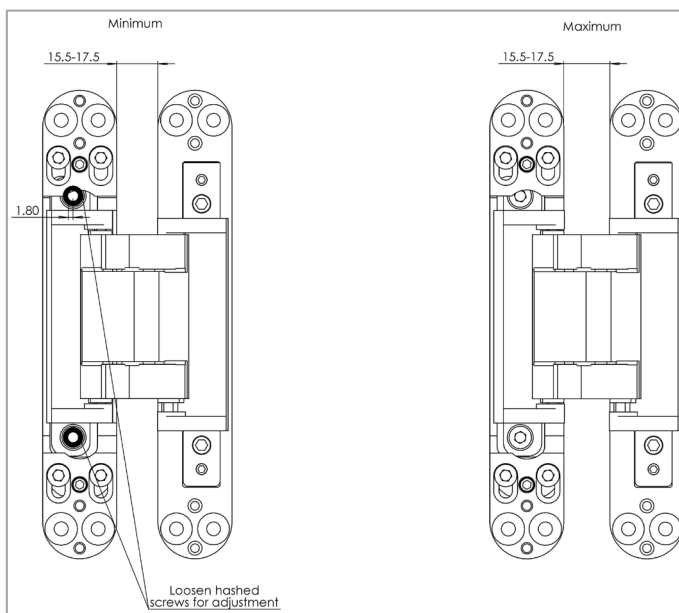
Gap Adjustment

***1** – Loosen hashed screws for adjustment

***2** – Minimum gap shown is without cover caps. Cover cap thickness is 1.5mm and must be taken into account.



Horizontal Adjustment



Vertical Adjustment

NOTE: All drawings are available on our website or can be made available on request

