



Flat Track 360

Sliding & Folding Door Systems



Product Overview

The largest of the Flat Track family the Flat Track 360 system truly marries both form and function. The simplicity of its exposed steel flat bar track and steel strap hangers give it a rustic barn door look making it ideal for barn conversions and the renovation of listed buildings, whilst its precisely engineered and lifetime lubricated components make for an impressive 360kg weight capacity enabling it to get to grips with even the largest rustic door. Combine this with the solid feel and smooth action it provides ensures that Flat Track 360 is also able perform in a commercial setting just as effectively as it will in a residential environment.

Features

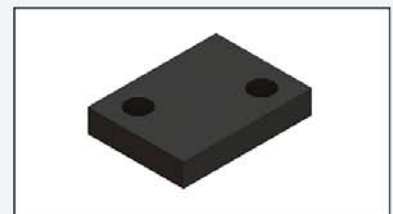
- Durable steel strap hangers run freely across a solid steel flat bar
- Anti-jump blocks prevent door from being removed from track
- Precisely machined steel wheels featuring sealed ball bearings that are lifetime lubricated ensure smooth running system
- Easy to install
- For internal use only

Technical Specifications

- Maximum Door Weight: 360kg
- Door Thickness: 38mm - 75mm



Hanger



Anti-jump



Jointing Bracket



Stopper



Flat track
360kg system shown

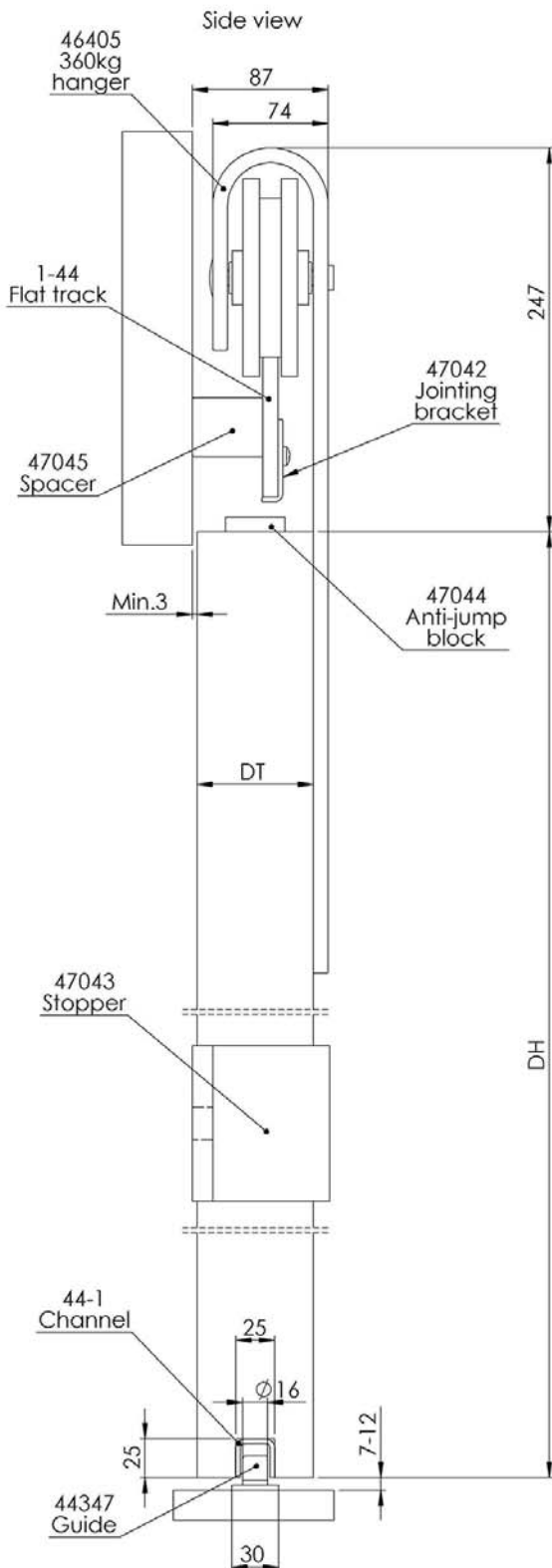
Maximum door weight 360kg

DH - Door height

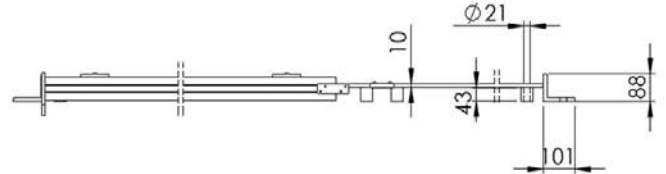
DWi - Door width

DT - Door thickness, between 38mm and 75mm

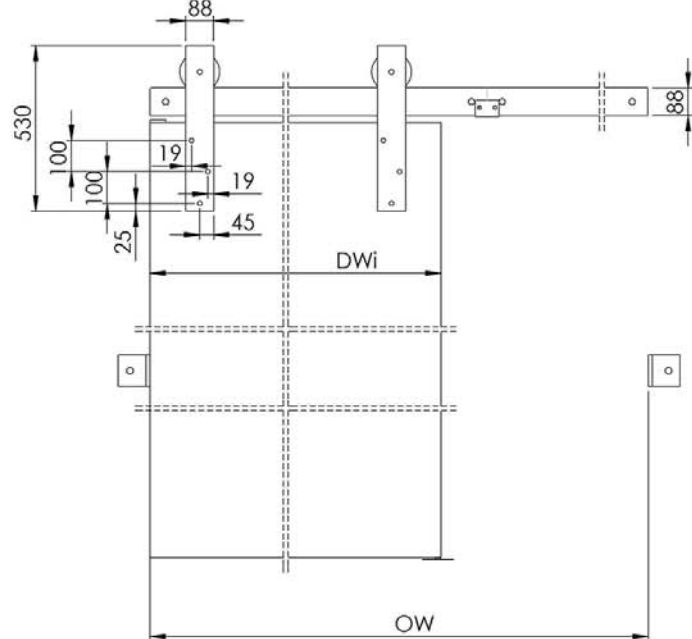
OW - Opening width



Front view
Scale 1:5



Front view
Scale 1:5



For further information on our products and services:

Tel: +44 (0)20 8545 6680 sales@coburn.co.uk www.coburn.co.uk

Coburn Sliding Systems LTD

Unit 1, Cardinal West, Cardinal Way, Cardinal Distribution Park.
Godmanchester, Huntingdon, Cambridgeshire, PE29 2XN United Kingdom.

