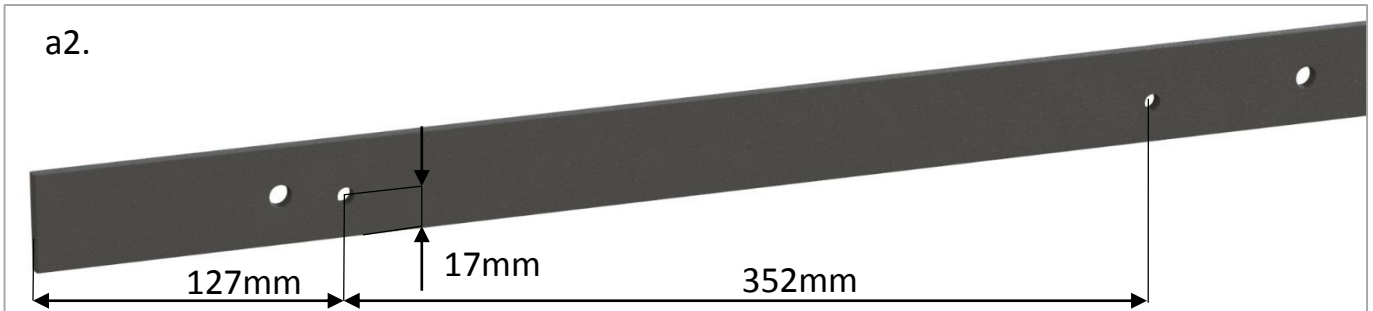
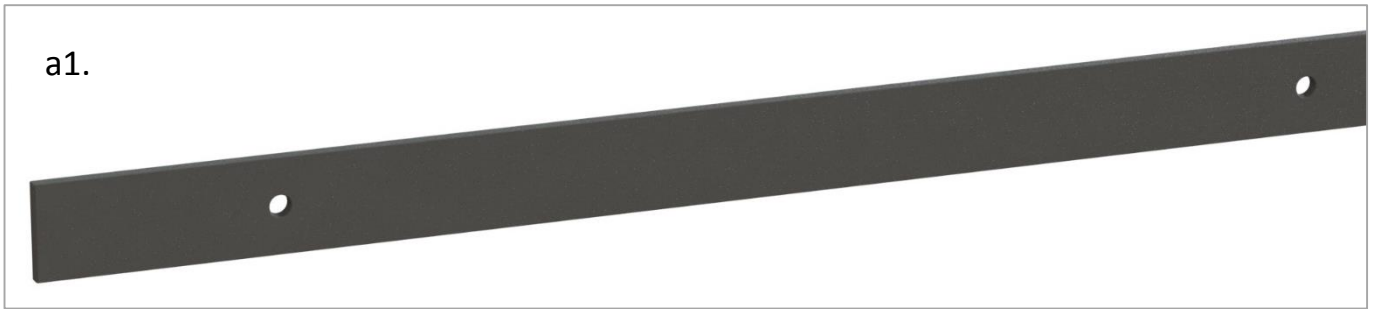
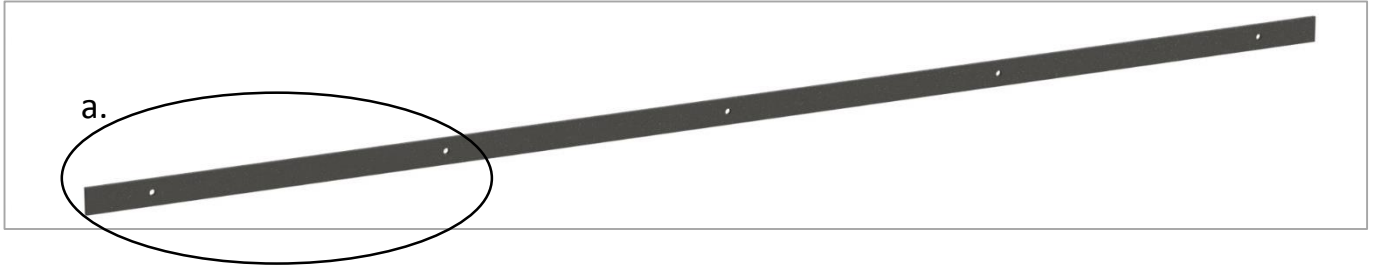


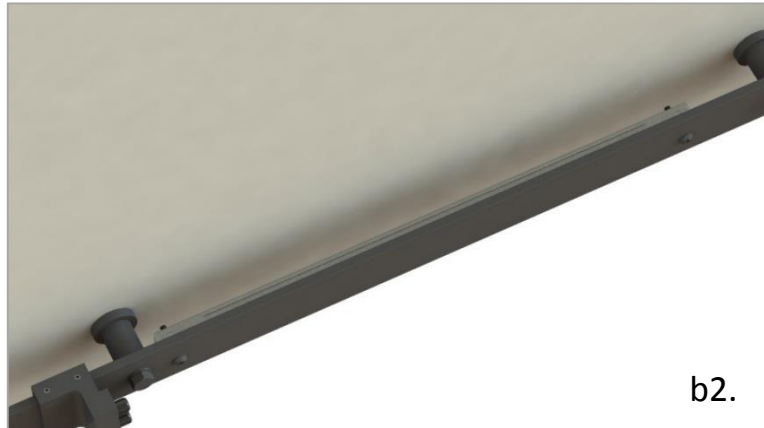
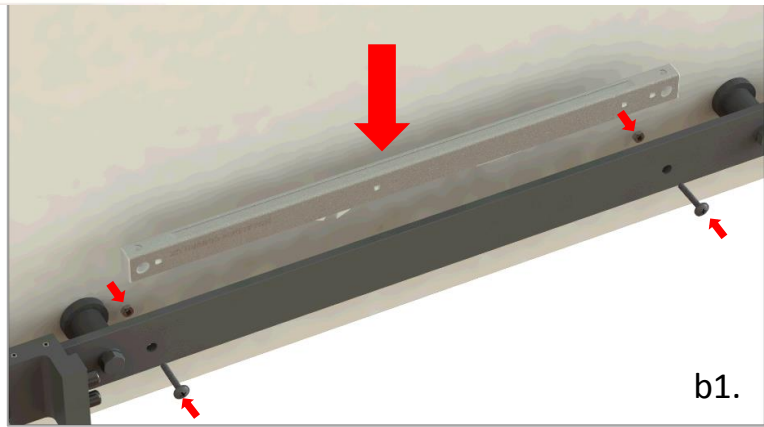
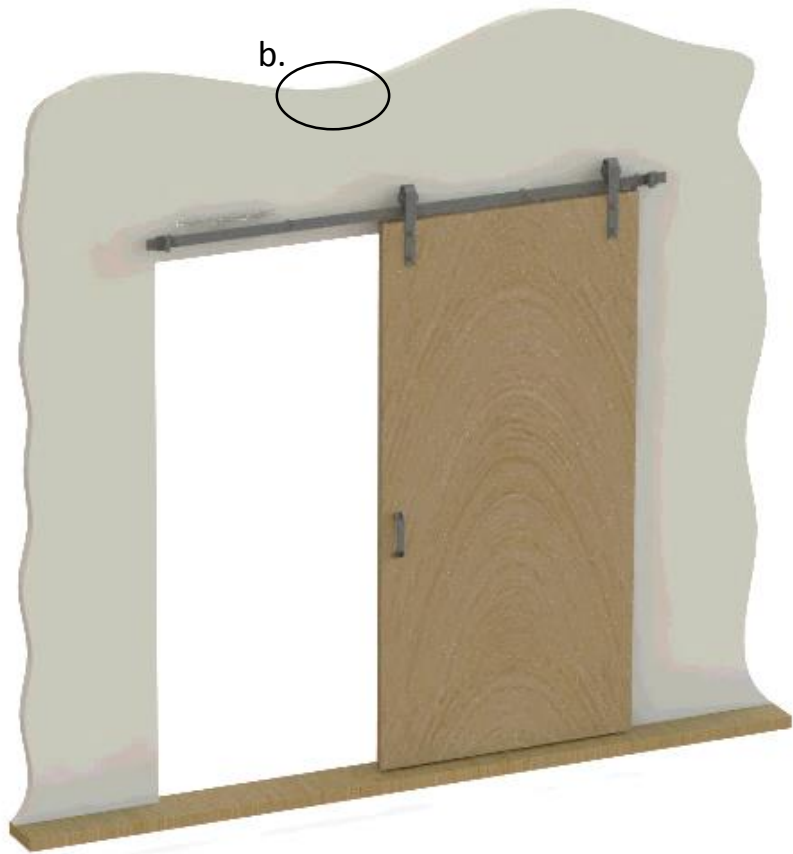
FLAT TRACK 100 SOFT CLOSER FITTING INSTRUCTIONS

Step 1 Track preparation



Drill 2x $\varnothing 5$ mm holes on the side where the soft closer will be mounted. For soft closing drill on closing side; for soft opening drill in opening side

Step 3 Fit soft closer



Place soft closer behind track and secure with nuts and screws. After securing soft closer make sure door is in fully closed position

Step 4 Fit actuator on top of door



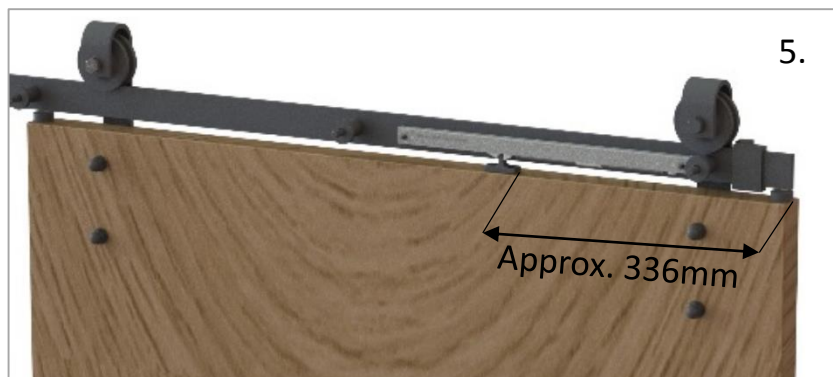
2. With the door in fully closed position and the soft closer in a closed position (spring and piston are not in tension) place actuator on top of door and in the soft closer trigger. Mark the position. It should be approx. 336mm



3. Open door and fix actuator in place with screws



Repeat or use same steps for soft opening



NOTE: View is from the back of track, wall is hidden on purpose so that details are revealed better. The actuator installation must be done from the top

Flat track 100

Soft closer

Fitting instructions



Coburn Sliding Systems Limited
Unit 1, Cardinal West, Cardinal Way,
Godmanchester, PE29 2XN, United Kingdom

Phone: +44 (0)20 8545 6680

Fax: +44 (0)20 8545 6720

E-mail: sales@coburn.co.uk

www.Coburn.co.uk