

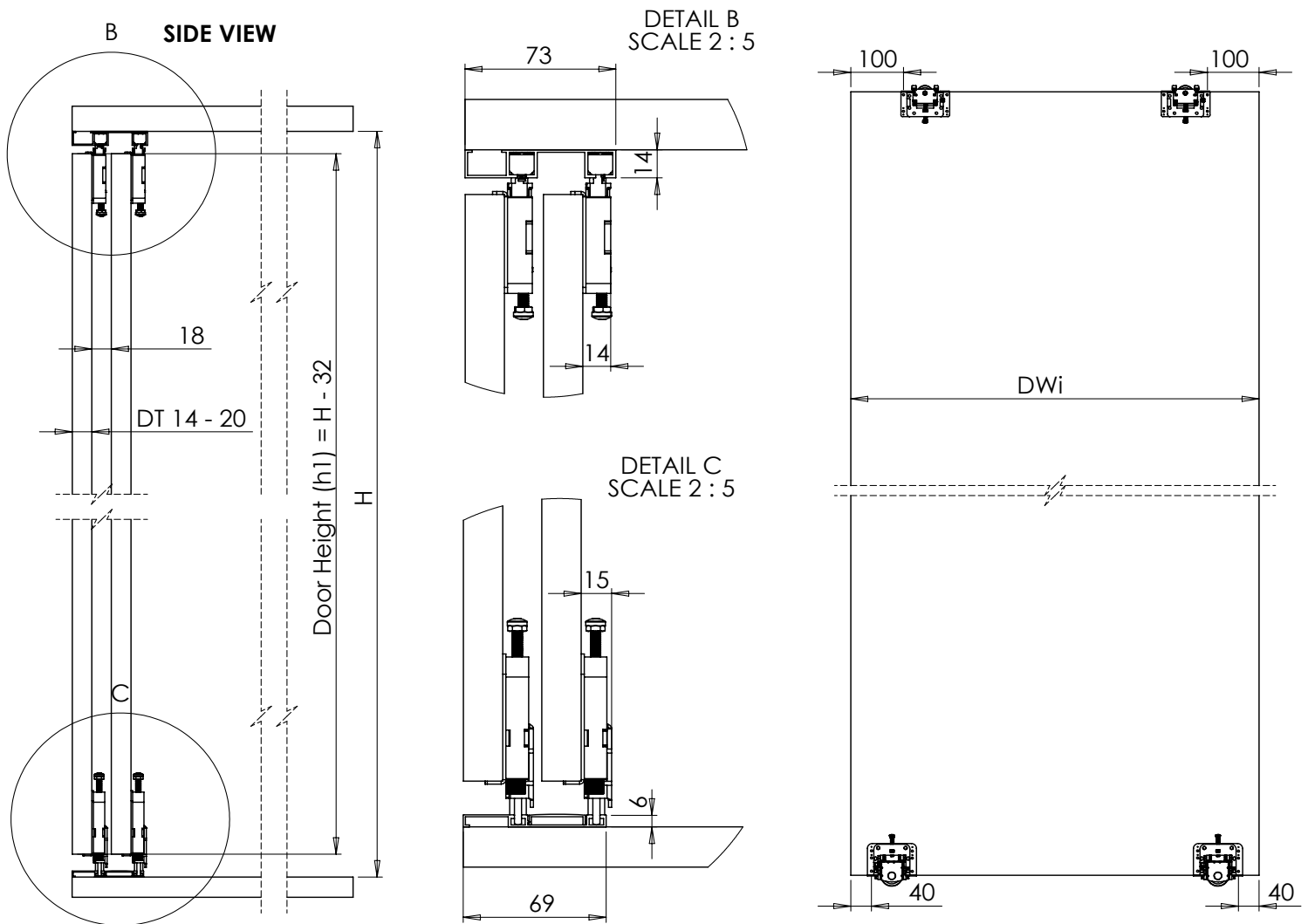
CELANTUR 50

Door Specification

Max Door Weight: 50kg,

Door Thickness: 14mm - 20mm,

Max Door Height: 2700mm



FITTING MANUAL 2 & 3 DOOR SYSTEM

$$DWi - \text{Door Width (2 Door)} = \frac{OW - 2F}{2} + 10$$

$$DWi - \text{Door Width (3 Door)} = \frac{OW - 2F}{3} + 15$$

DT - Door Thickness, between 14mm and 20mm

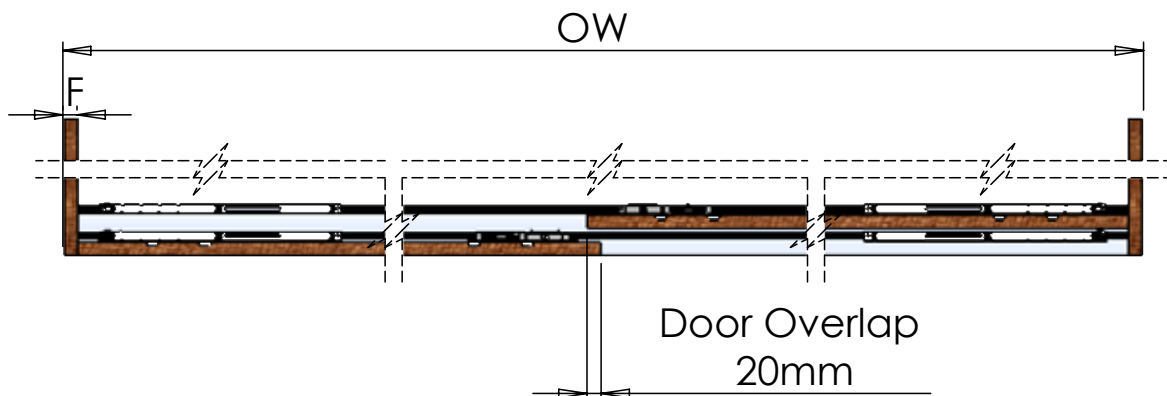
OW - Opening Width

H - Inside Height of Wardrobe

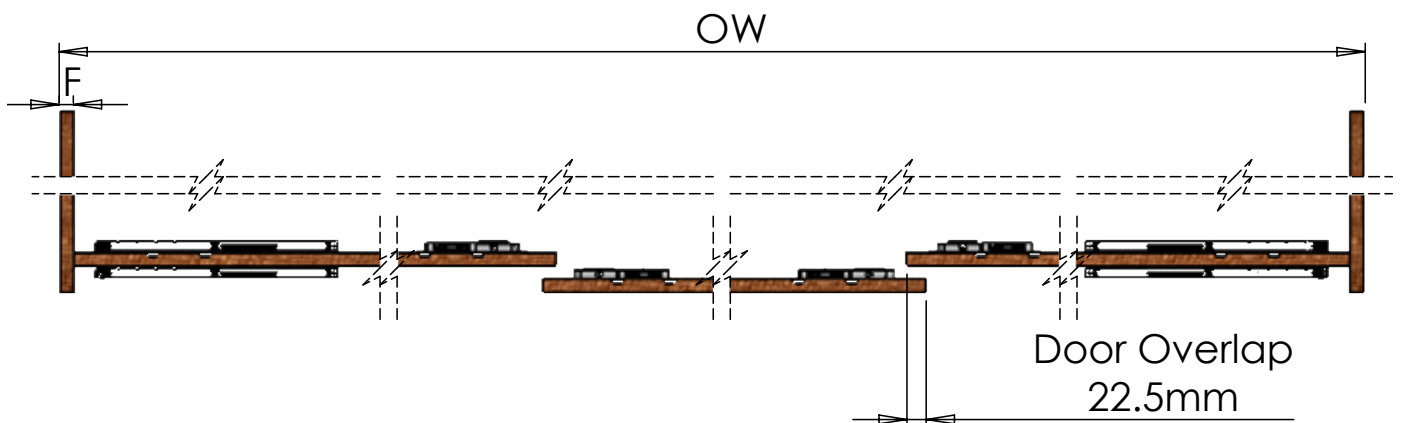
$$DH = H - 32$$

F - Thickness of Side Panel

2 DOOR



3 DOOR





SCREWDRIVER

A Phillips head screwdriver.



RULER

Size: 300mm.

System Components



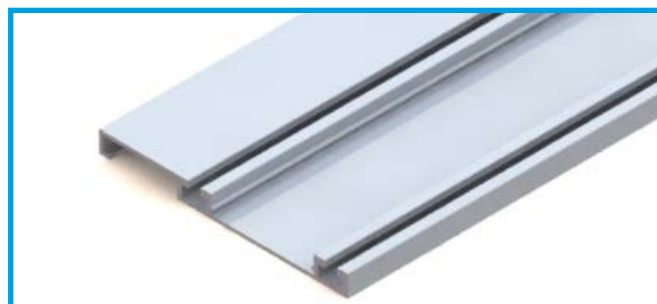
TOP TRACK*

Article Number: 868

Quantity: 1 Piece

Celantur 50, top track, anodised.

* Available in 2 meters (868-20), and 3 meters (868-30).



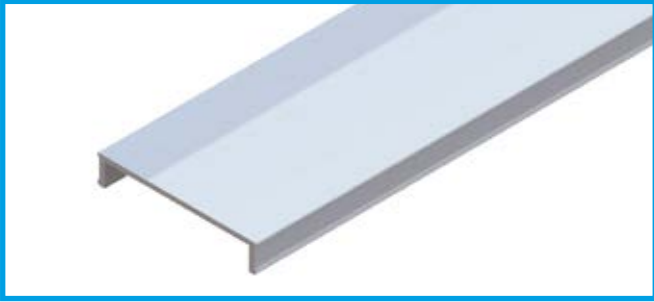
BOTTOM TRACK*

Article Number: 868

Quantity: 1 Piece

Celantur 50, bottom track, anodised.

* Available in 2 meters (868-20), and 3 meters (868-30).



BOTTOM TRACK COVER

Article Number: 868

Quantity: 1 Piece

Celantur 50, bottom track cover, anodised.

* Available in 2 meters (868-20), and 3 meters (868-30).



FITTINGS PACK (2 DOOR / 3 DOOR)

Article Number: 86901 / 86902

Top Runner: 4 Pieces / 6 Pieces

Bottom Runner : 4 Pieces / 6 Pieces

Soft Closing Dampers : 4 Pieces



SPACER*

Quantity: 8 Pieces / 12 Pieces

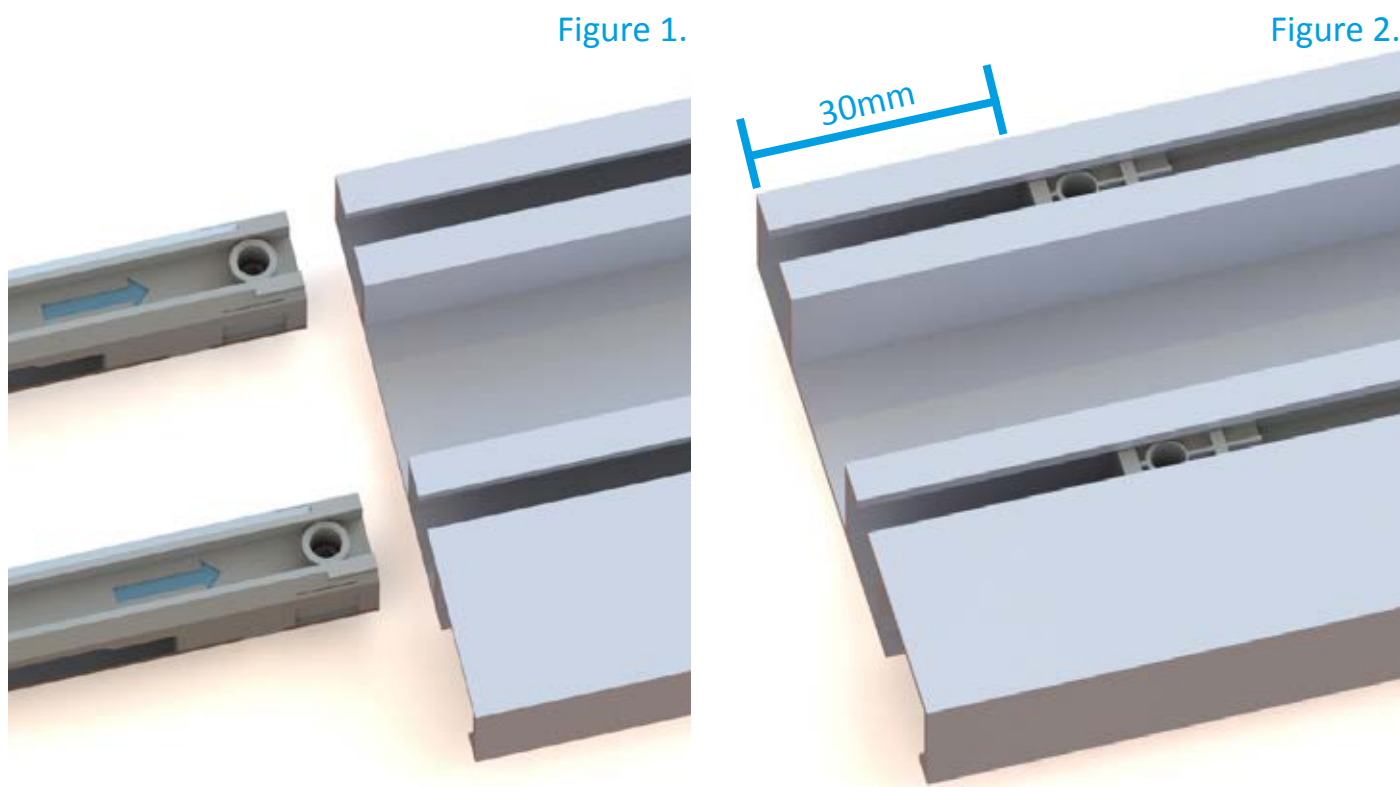
* Used for Aluminium doors only.



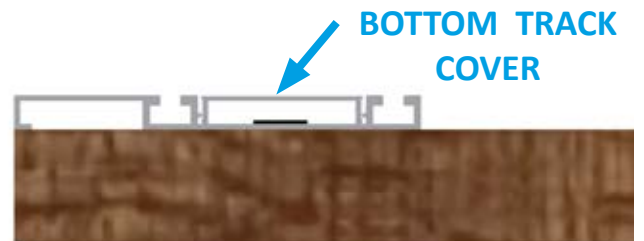
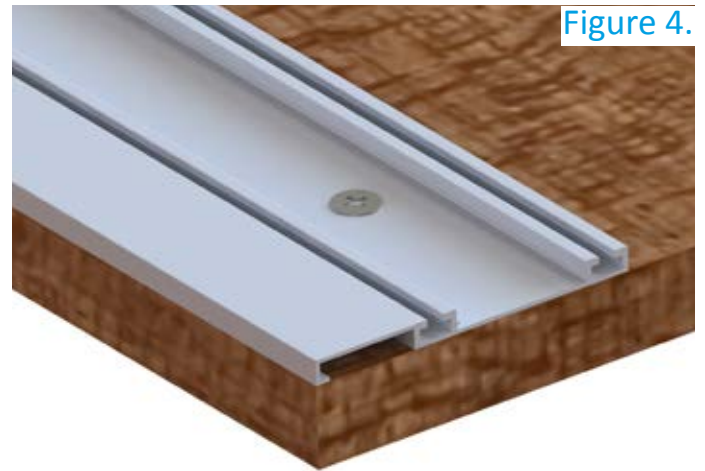
FIXINGS

Cross Head Self Tapping Screws
Size: M4 x 14mm

Allen Key: 2mm



1. Remove the top track **8-68**, and soft closing dampers from the outer packaging.
2. Arrange the soft closing dampers so that the arrow is facing upwards, and in the correct direction as guided in **Figure 1**.
3. Slide the soft closing dampers into the top track, leaving 30mm distance from the edge of the top track as guided in **Figure 2**.
4. Twist the top track around and do the same for the other end, (4 dampers inserted in total).



1. Fix the top track **8-68**, onto the inside of the wardrobe using the self tapping screws as guided in **Figure 3**.
2. Fix the bottom rail **8-68**, onto the inside of the wardrobe using the self tapping screws as guided in **Figure 4**.
3. Fix the bottom track cover as guided in **Figure 4**.

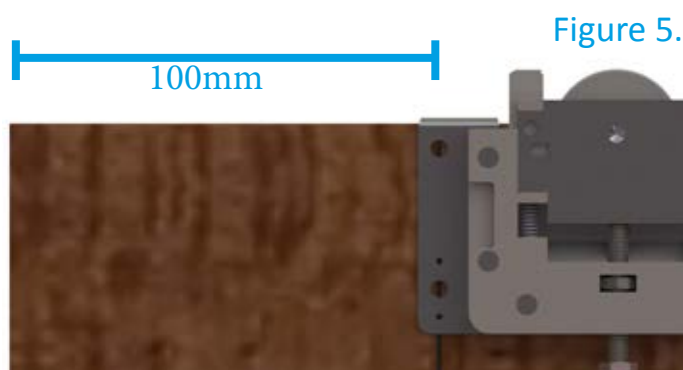


Figure 5.

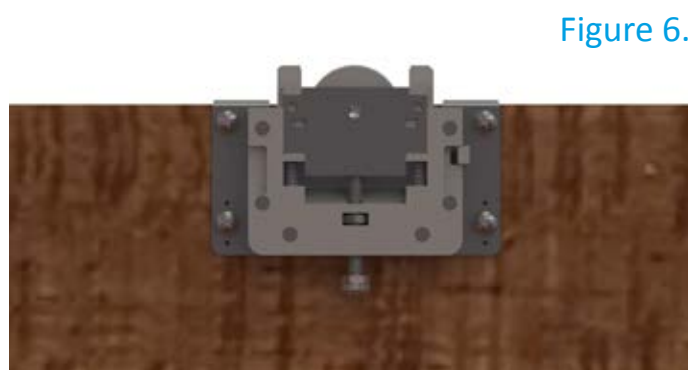


Figure 6.

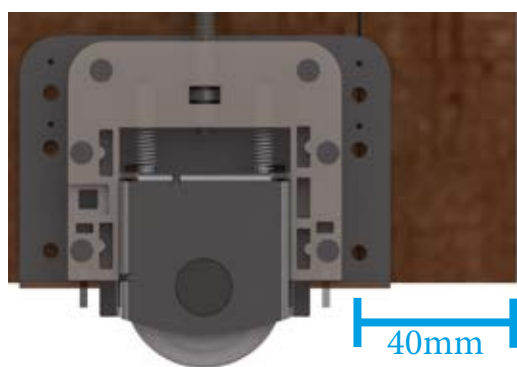


Figure 7.



Figure 8.

1. Place the inner door/s face down onto the floor.
2. Using the ruler, mark out a vertical line, 100cm from the top left and top right of the door/s.
3. Place the centre of the drilled hole of the upper roller on the marked out vertical line as guided in **Figure 5**.
4. Fix the upper rollers onto the inner door/s using the screws as guided in **Figure 6**.
5. Using the ruler, mark out a vertical line, 40mm from the bottom left and bottom right of the door/s.
6. Place the centre of the drilled hole of the bottom roller on the marked out vertical line as guided in **Figure 7**.
7. Fix the bottom rollers onto the inner door/s using the self tapping screws as guided in **Figure 8**.

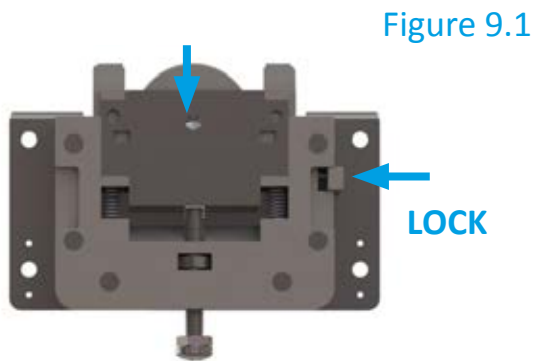


Figure 9.1

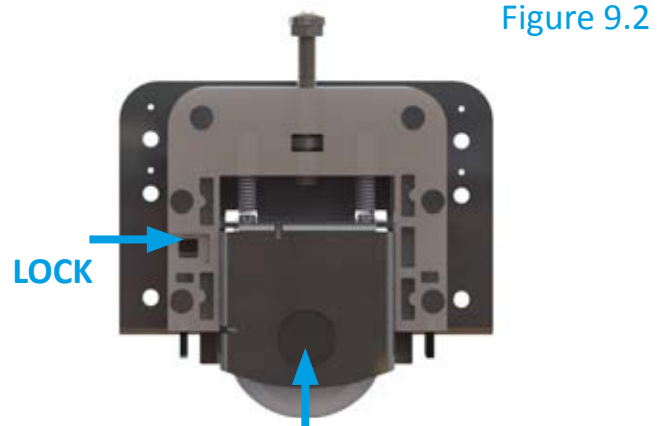


Figure 9.2

8. Lock the upper roller by pushing down the wheel and sliding the clip into place as guided in **Figure 9.1**.
9. Lock the bottom roller by pushing up the wheel and sliding the clip into place as guided in **Figure 9.2**.
10. Repeat the previous 9 steps for the outer door.

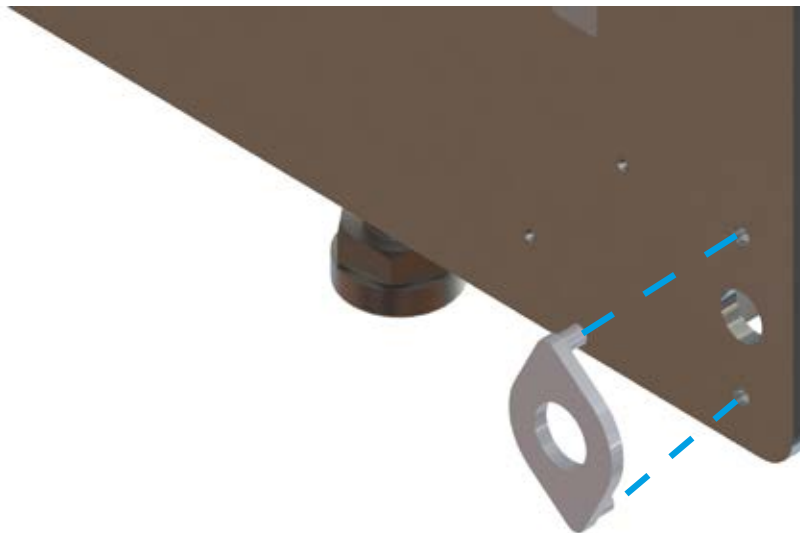


Figure 10.

11. If using an aluminium framed door/s, install the spacers onto the rollers as guided in **Figure 10**, if not skip this step.



Figure 11.



Figure 12.

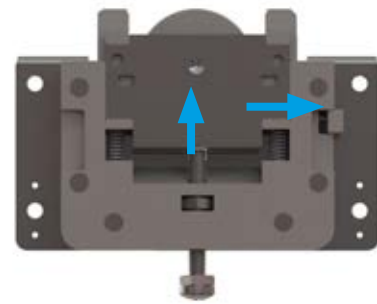
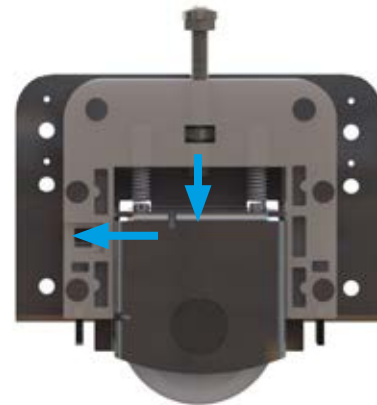


Figure 13.

UNLOCK



UNLOCK

1. Place the inner door/s on the centre of the bottom track.
2. Softly push the inner door/s onto the bottom track to ensure the door is fixed into place as guided in **Figure 11**.
3. Carefully direct the upper roller into position as guided in **Figure 12**.
4. Unlock, the upper and bottom rollers after the door has been correctly installed, by sliding the lock and pushing the wheel as guided in **Figure 13**.
5. Repeat the previous 4 steps for the outer door.

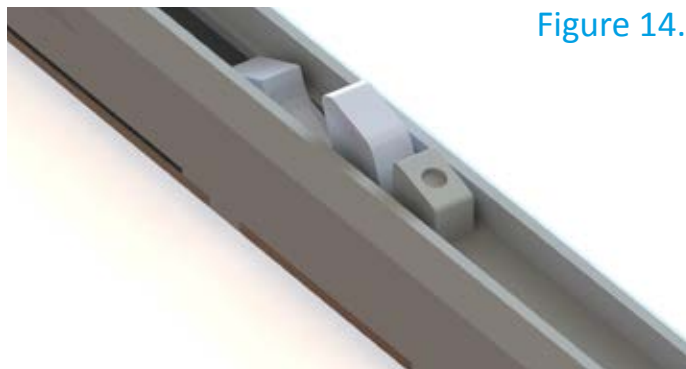


Figure 14.

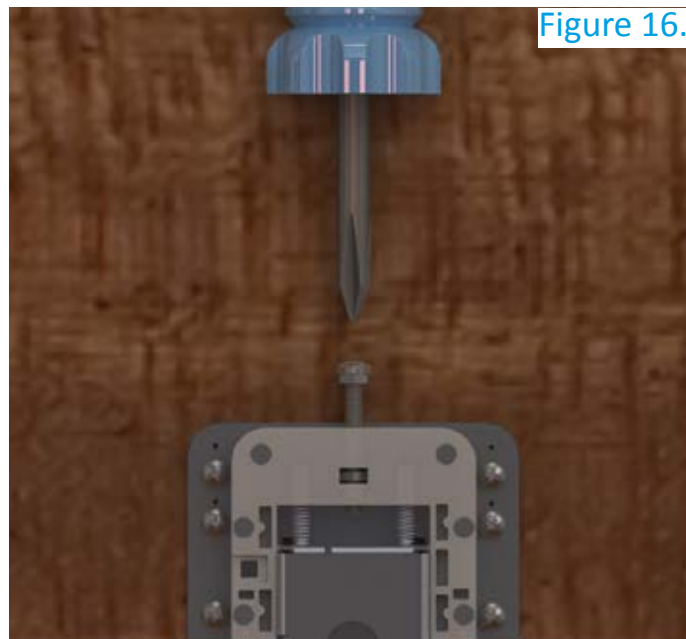


Figure 16.



Figure 15.

1. Push the hook located in the soft closing damper into the correct position as guided in **Figure 14**.
2. Push the door to the end of the track.
3. Using the Allen key, screw the soft closing Damper onto the top track as guided in **Figure 15**, move down the length of the damper and screw in the other end. Repeat this step for the remaining 3 dampers.
4. Adjust the screw and nut on the bottom roller to regulate the door gap as guided in **Figure 16**.

CELANTUR 50



Unit 1, Cardinal West,
Cardinal Distribution Park,
Godmanchester,
Huntingdon,
Cambridgeshire, PE29 2XN

Tel: +44 (0) 20 8545 6680

www.coburn.co.uk