



Celantur 80

Wardrobe Door System

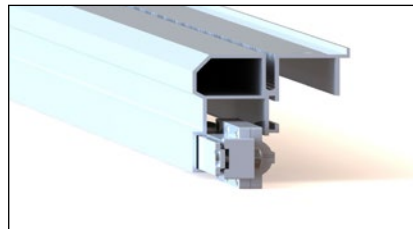


Product Overview

The Celantur 80 is a desirable and elegant wardrobe system using a combination of upper and lower rails, neatly concealed at the rear of the doors, which enables the doors to glide effortlessly through a single plane. The system is perfectly suited for larger sized wardrobe doors.

Features

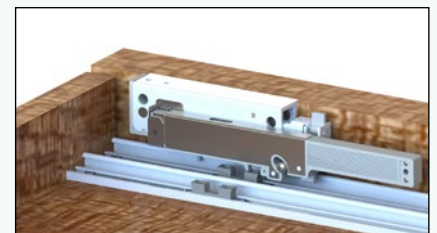
- Supplied with upper and lower aluminium rails, which when fitted are concealed at the back of the sliding doors
- Equipped with soft closing and soft opening dampers as standard
- Easy to fix anti-jump with one click
- Variable thickness adjustment
- Kits available for 2 and 3 sliding doors with exterior door overlapping
- Self cleaning rollers



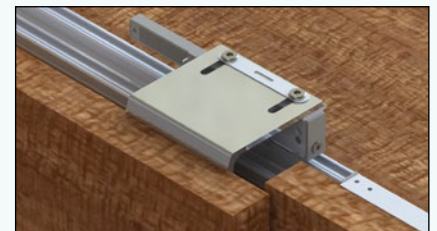
Installing the Bottom Damper in the track

Technical Specification

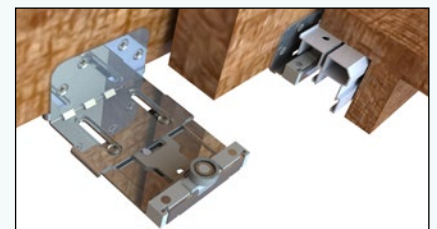
- Maximum Door Weight: 80kg
- Door Thickness: 16 - 46mm
- Maximum Door Height: 3000mm



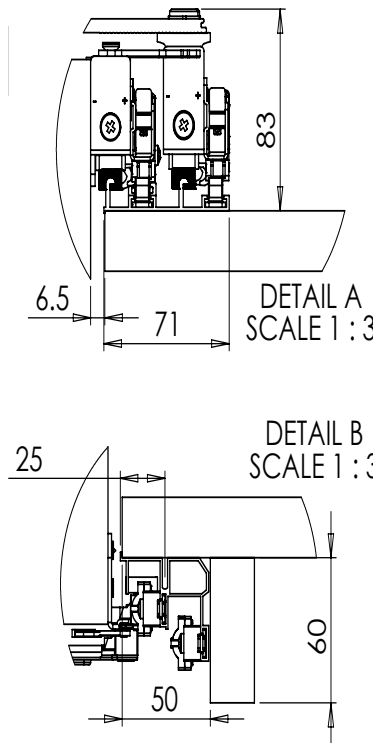
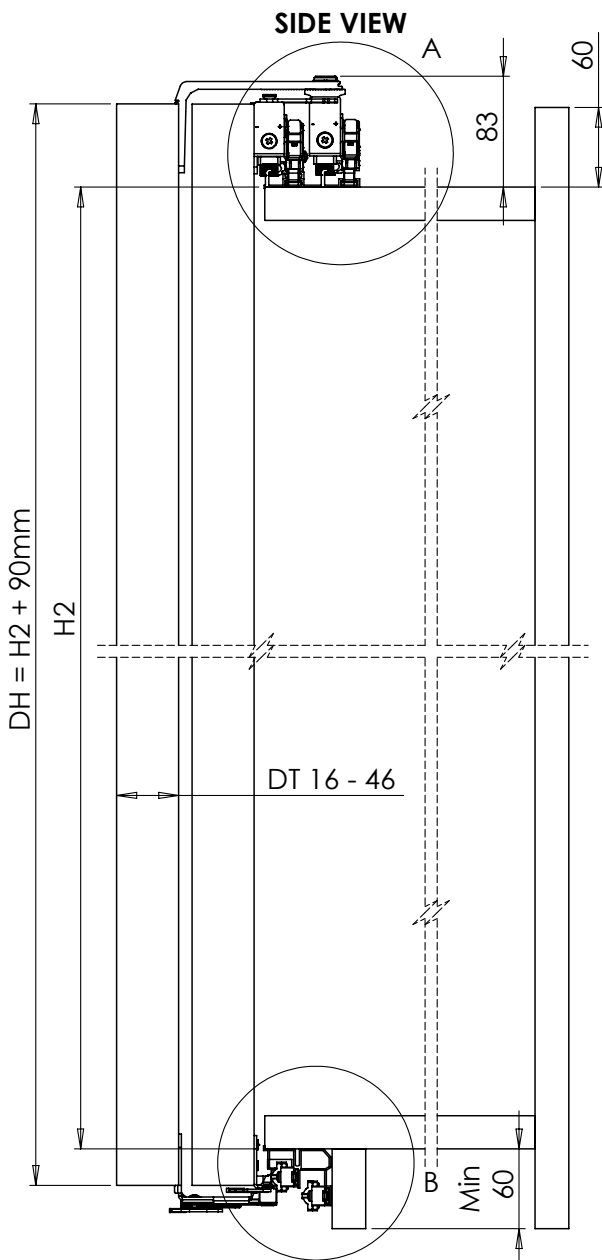
Top track with Top Inside Roller and Soft closer



Outer Top roller and Top Track



Bottom Rollers and Bottom Track



Calculation of Cabinet size
 $K1 = k + T + 8$ (T = Thickness of door)

Maximum Door Weight - 80kg

DH - Door Height, Maximum 3000mm
 DWi - Door Width (2 door) = $\frac{W}{2} + 10$

DWi - Door Width (3 door) = $\frac{W}{3} + 10$

DT - Door Thickness, between 16mm and 46mm

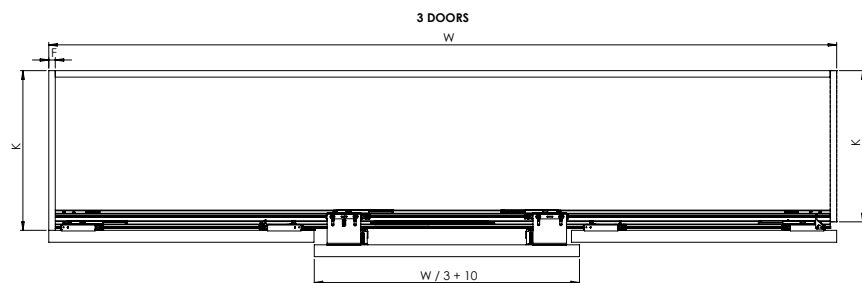
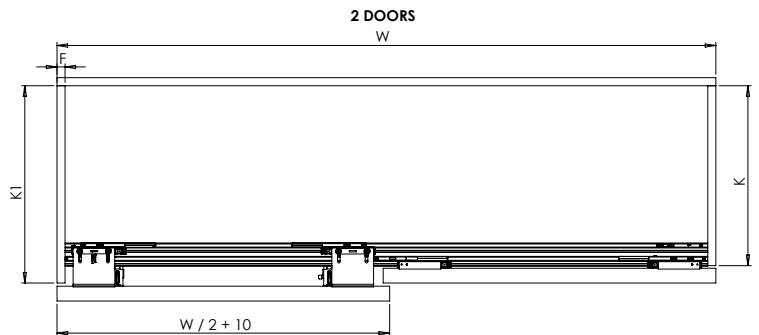
W - Opening Width

H - Inside Height of Wardrobe

DH = H2 + 90

F - Thicknes of Side Panel

2 DOORS



For further information on our products and services:
 Tel: + 44 (0)20 8545 6680, sales@coburn.co.uk, www.coburn.co.uk

Coburn Sliding Systems Ltd.
 Unit 1, Cardinal West, Cardinal Way, Cardinal Distribution Park.
 Godmanchester, Huntingdon, Cambridgeshire, PE29 2XN United Kingdom.

Dealer Stamp