



# Topslide 50 Wardrobe Door System

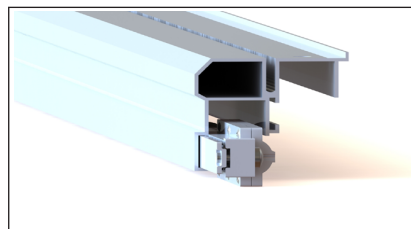


## Product Overview

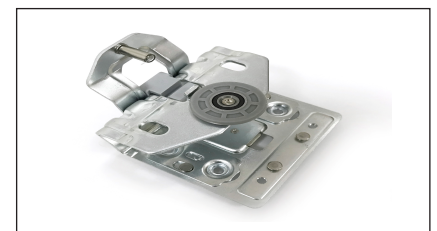
The Topslide 50 is a neat and stylish wardrobe sliding system that uses upper and lower tracks combined with smooth running rollers that enable the door to glide effortlessly in a single plane. The system is perfectly suited for light to medium weight wardrobe doors.

## Features

- Slim top and bottom aluminium tracks, supplied with bottom track cover
- Quick and easy installation
- Equipped with soft closing dampers as standard
- Soft closing dampers concealed in the track
- Variable door height adjustment
- Kits available for 2 and 3 sliding doors



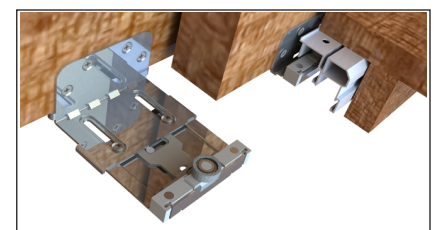
Installing the Bottom Damper in the track



Top Roller with Soft Closing actuator



Top Roller



Bottom Rollers and Bottom Track

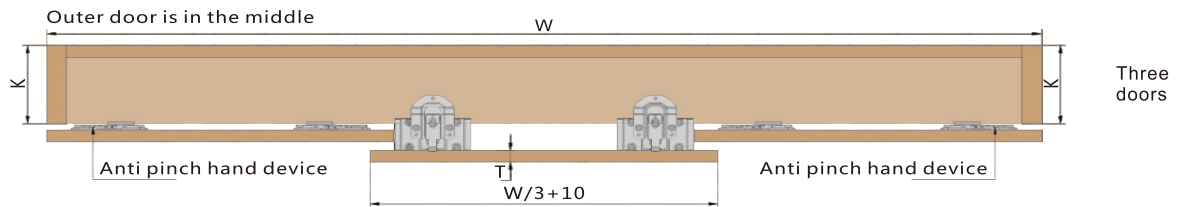
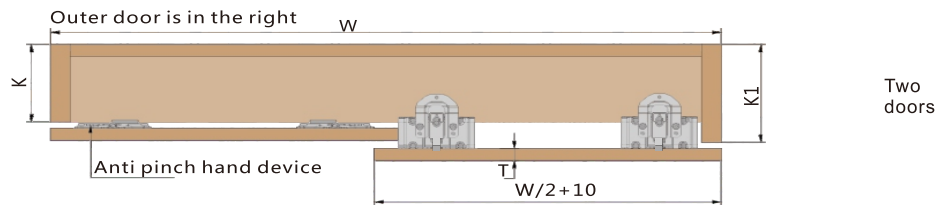
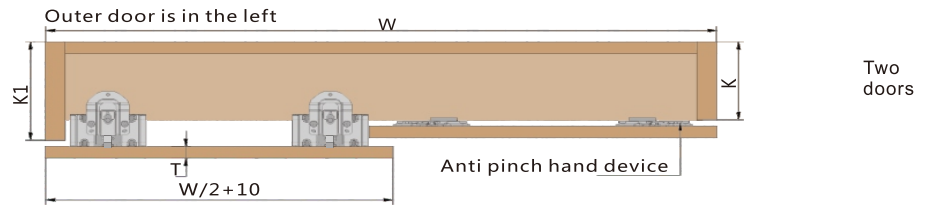
## Technical Specification

- Maximum Door Weight: 50kg
- Door Thickness: 18 - 25mm
- Maximum Door Height: 2700mm

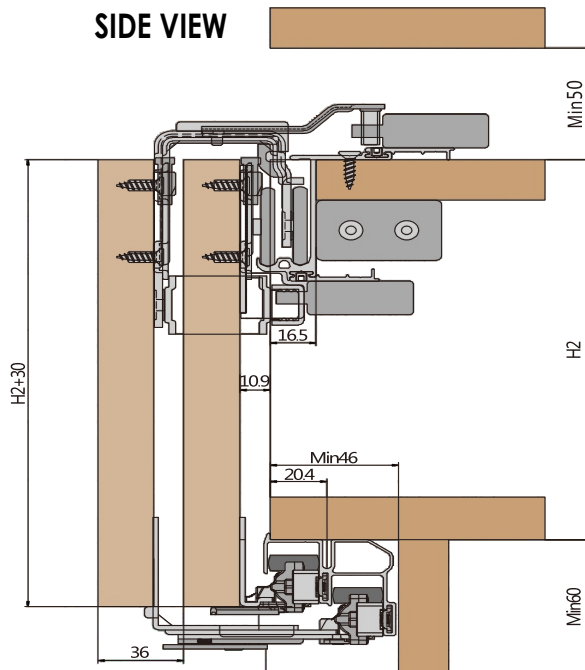




Calculation of cabinet size  $K1=K+36$  ( $T$ =Thickness of door  $18 \leq T \leq 25$ )  
Width of door depends on the actual shape of door



SIDE VIEW



Maximum Door Weight - 50kg

DH - Door Height, Maximum 2700mm

T - Door Thickness, between 18mm and 25mm

W - Wardrobe Width



For further information on our products and services:  
Tel: + 44 (0)20 8545 6680, sales@coburn.co.uk, www.coburn.co.uk

Coburn Sliding Systems Ltd.  
Unit 1, Cardinal West, Cardinal Way, Cardinal Distribution Park.  
Godmanchester, Huntingdon, Cambridgeshire, PE29 2XN United Kingdom.

Dealer Stamp

