

Coburn Foldaside & Cornaway



Foldaside and Cornaway Door Systems

FOR EXTERIOR FOLDING DOORS AND FOR DOORS SLIDING FROM THE OPENING TO SIDE WALLS



A comprehensive range of sliding door fittings for exterior folding doors, and for doors sliding round the corner from the opening to side wall or walls.

All standard Foldaside and Cornaway hangers are of steel construction with ball bearings lubricated for life. Backflaps are either pressed steel or malleable iron. Full details of the hangers, backflaps, hinges, guides, tracks, brackets and bottom channels are shown on the pages relating to the gear concerned.

In most instances, opening widths are unlimited, but individual door leaves are restricted to between 700 and 1000mm wide. With the Foldaside system not more than eight leaves should be hinged together (six on Foldaside 410) and with the Cornaway system not more than five leaves. Façade may be used only with an odd number of leaves. See the pages relating to the gear concerned for complete details of maximum sizes etc.

All performance recommendations apply to the gear only and specifiers and purchaser must satisfy themselves that the building structures are adequate for the door weights and wind pressures and will allow the specified working clearances to be maintained under all conditions. All loadings given are based on doors subjected to normal manual usage under normal conditions.

Whilst the systems shown in this catalogue are especially suitable for exterior openings, their use may also be considered for interior applications.

Index

FAÇADE

BOTTOM ROLLING FOLDING DOOR SYSTEM

Maximum Door Height (m)	Maximum Weight per leaf (kg)	Gear Number	Page Numbers
3.0	60	-	5

FOLDASIDE

EXTERIOR FOLDING DOORS

2.4	36	210	6-7
3.3	55	310	8-9
3.6	60	310	8-9
4.2	70	410	10-11

CORNAWAY

FOR DOORS SLIDING FROM THE OPENING TO SIDE WALLS

2.4	36	210	12-13
3.3	50	310	14-15
3.6	60	310	14-15

Top Track Brackets

DESIGN

Brackets have been designed to perform to all maximum carrying capacities shown in this catalogue under all normal conditions. For unusual and mechanically operated doors consult HILLALDAM COBURN.

MATERIALS

All brackets are either aluminium, forged or pressed steel.

JOINT AND END BRACKETS

The 100 type of side fixing brackets for all tracks except for 4-30 have a detachable lock-joint kit to convert the ordinary plain bracket, and most types of brackets for 2-16, 3-20, 3-25 and 4-30 tracks have detachable end plates which convert plain brackets to any hand of closed end.

SINGLE TRACK SIDE FIXING BRACKETS

Type -100 Open bracket

- 051 Closed end piece to convert 2-100 & 3-100 open brackets to any hand of closed end
- 4-051 Closed end piece to convert 4-100 open bracket to any hand of closed end
- 002 Lock joint plate to convert 2-100 & 3-100 open brackets to lock joint brackets
- 4-102 Lock joint bracket for 4-30 track

Track No.	A mm	B mm	C Open/ Closed mm	C Lock Joint mm	D mm	E mm	H Bolt Dia mm
2-16	92	50	49	49	76	25	10
3-20	121	67	60	60	102	35	12
3-25							
4-30	152	81	75	75	130	45	16

UNIVERSAL SOFFIT FIXING BRACKETS

Type - 150 Open bracket

- 051 Closed end piece to convert open bracket to any hand of closed end
- 152 Lock joint bracket

Track No.	A mm	B mm	C mm	D mm	H Bolt Dia mm
2-16	70	45	45	90	8
3-20	94	58	57	115	10
3-25					
4-30	120	76	76	140	12

SOFFIT FIXING BRACKET

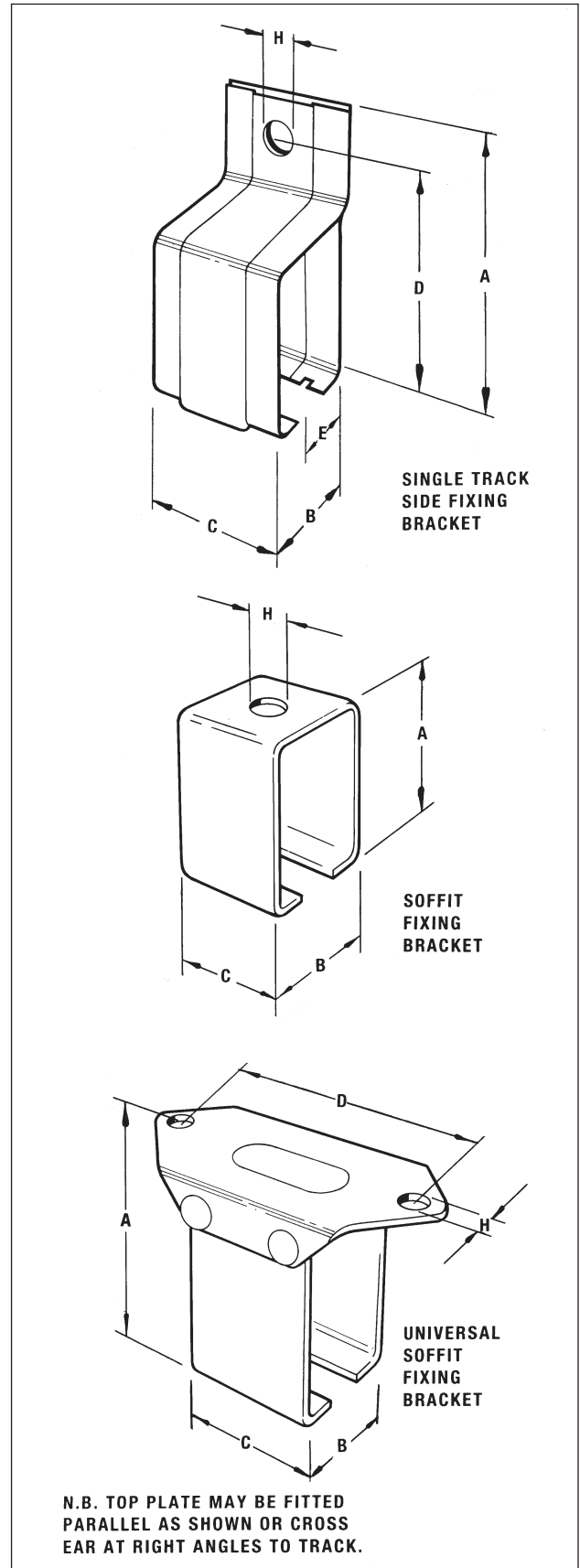
Type - 190 Open bracket

- 192 Lock joint bracket

Track No.	A mm	B mm	C mm	H Bolt Dia mm
2-16	65	44	44	10
3-20	87	58	57	12
3-25				
4-30	113	73	76	16

FINISH

All steel brackets are supplied plated.



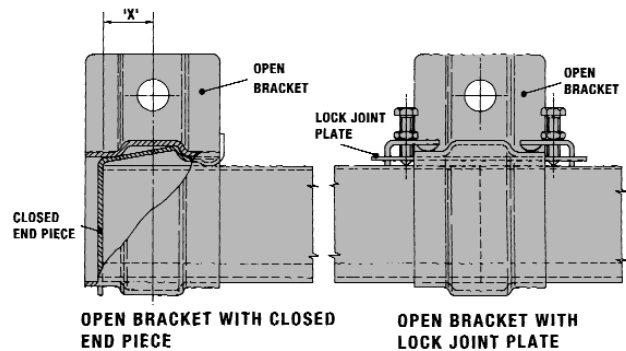
Top Track Brackets Spacings

Side or soffit fixing track brackets are available and should be positioned at the centres shown. With Foldaside 410 sliding and folding door gear (pages 10 and 11) the bracket centres are restricted to a maximum 800mm. An additional track bracket should therefore be specified when using 1.8m track lengths.

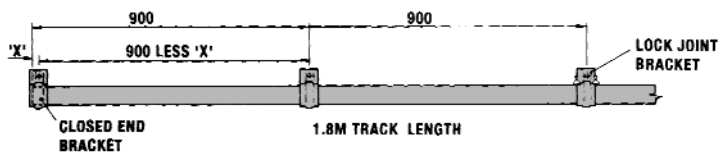
Foldaside doors require an extra bracket fitted where the concentrated weight of the folded doors is carried when in the open parked position.

All types of brackets employ set screw jointing devices and are available with closed end pieces to blank off the end of track runs. Brackets with closed end pieces should be fitted at the end of each track run and lock joint brackets at each track joint.

Cornaway top track curves should be supported with lock joint brackets at each end and one open bracket in the centre of the curve - see appropriate drawings pages 13 and 15.

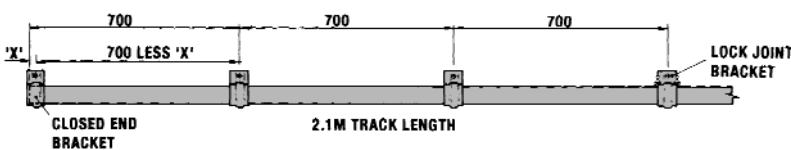


BRACKET SPACINGS



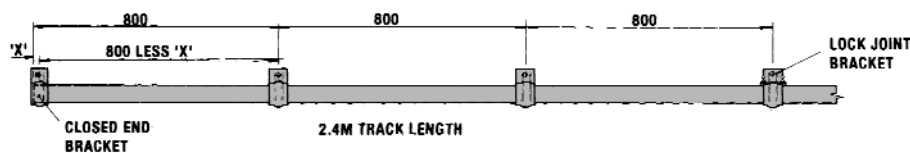
Track No.	Dimension 'X'
2-16	16
3-20	20
3-25	25
4-30	25

FOR TRACKS 2-16, 3-20, 3-25 AND 4-30 THE CLOSED END PLATES ARE SENT SEPARATELY AND CAN BE ASSEMBLED EITHER HAND.

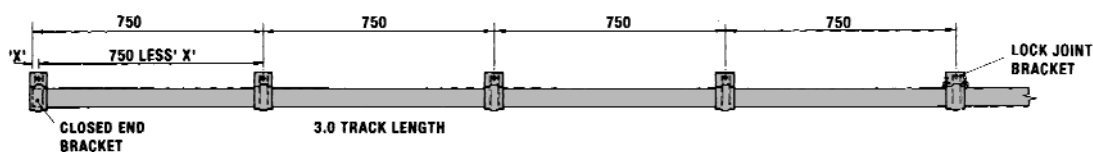


FOR TRACKS 2-16 AND 3-20 TYPE 100 SIDE WALL BRACKETS THE LOCK JOINT DEVICE IS ALSO SUPPLIED AS A KIT AND IS ASSEMBLED TO A PLAIN BRACKET.

EXTRA BRACKETS ARE NECESSARY WHERE A CONCENTRATED WEIGHT OF FOLDED DOORS IS CARRIED.



ADDITIONAL BRACKETS MAY BE NECESSARY WITH HEAVIEST GEARS. REFER TO APPROPRIATE DRAWINGS.



Coburn Façade

Sliding/Folding Door Hardware



SPECIFICATION:

Maximum leaf weight:	60kg
Maximum leaf height:	3000mm
Maximum lead width:	900mm
Recommended door thickness:	44mm
Doors up to 60mm can also be used (apply to Coburn for details)	
SPECIAL NOTES:	
3 or 5 leaves can be hinged together and to the frame.	
Odd numbers of doors only	
No floating suites.	

Coburn Façade is the latest in sliding/folding door hardware for fully rebated timber doors. Specially developed for quality applications, Coburn Façade is a product to meet the growing demand for clear access to terraces and patios in both commercial and domestic situations.

Available in a Sovereign silver finish, Coburn Façade allows doors to be rebated in the usual way within a frame, to provide a proper draught seal. All door leaves should be of equal width and the system requires that 3 or 5 leaves are used.

Best performance is achieved when the doors open outwards, but the system can be adapted with a flat cill where inward opening is preferred.

Coburn Façade does not include the doors.

COMPONENTS

Part Number	Description	Quantities Needed	
		3 Door	5 Door
		09767	09768
09761	Bottom Roller	1	2
09762	Top Guide	1	2
09763	Intermediate Hinge	6	9
09766	Int Hinge with handle	1	2
95616	Flush Handle	3	4
95663	Holdback Catch	1	1
95673	Flush Bolt	2	4
07115	Brush Strip	3	5
07156	Draught Seal	24m	40m
66-4	Bottom Track S/S	1	2
44-4	Top Channel S/S	1	2



Foldaside 210 Sliding & Folding Door System

FOR TOP HUNG INWARD FOLDING DOORS

APPLICATION

For garages, factories, and light industrial use etc.

RANGE

Maximum weight per door leaf 36kg (80lb)
 Maximum door height 2.4m (8ft)
 Maximum opening width Unlimited
 Maximum door leaf width 800mm (2ft 8ins)
 Up to 8 leaves may be hinged together.
 Consider door area in exposed positions.

DOOR CONSTRUCTION

Door thickness 38 to 44mm. Width of door leaves vary according to arrangements, refer to drawing for details. Swing leaves are best hinged to jambs. When hinged to folding suites reduce door leaf widths to 700mm. Always engage holdback catch before operating.

FIXING

Side fixing standard. Additional brackets required where doors stack when folded. All hangers and guides have vertical adjustment. Floor channel unnecessary under swing leaves.

HANGERS

All steel, ball bearing, lubricated for life.
 Pressed steel backflaps. 2-217 Two wheel end pattern.
 2-221 Two wheel centre pattern.

TRACK

2-16 (1.6mm) Galvanised steel to BS EN 10142.
 Lengths 1.8m to 6.0m.

TRACK BRACKETS

Steel. See drawing and full range page 3.

INTERMEDIATE HINGES

95-500 Pressed steel backflaps.

FOLDASIDE BUTT HINGES

95-520 Steel, size 75 x 50mm. 95-522 Steel, size 89x60mm.
 95-524 Steel, size 102 x 67mm.

DOOR GUIDES

Pressed steel backflaps, brass roller. 44-317 End pattern.
 44-321 Centre pattern.

FLOOR CHANNEL

44-1 Galvanised steel. Lugs available for concrete with connecting shoes for joints. Lengths 1.8m to 4.0m.

FURNITURE

Full range of door furniture available.

FINISHES

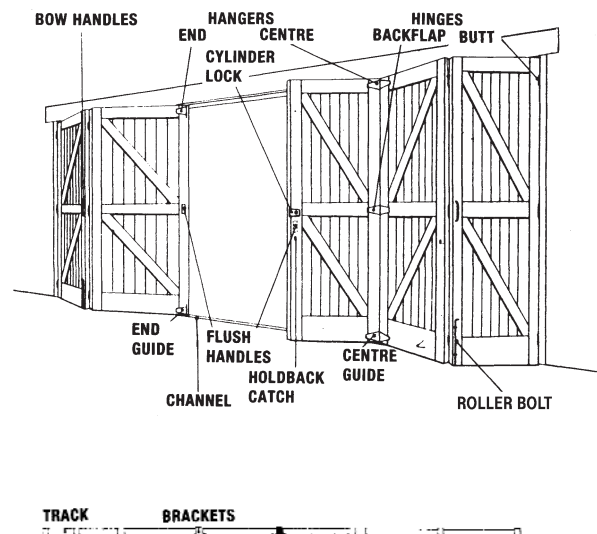
Top track galvanised, brackets and backflaps zinc plated.

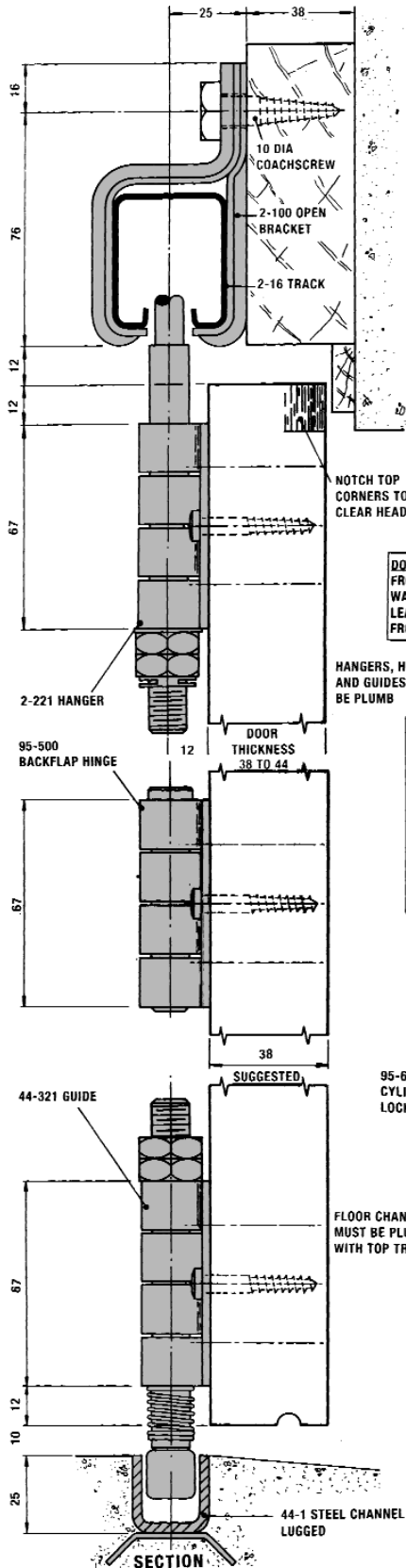
EXAMPLE

Quantities for a door opening 3.5m wide x 2.1 high. Weight of each leaf 25kg. Three leaves folding one way, two opposite way, end leaves hinged to jambs.

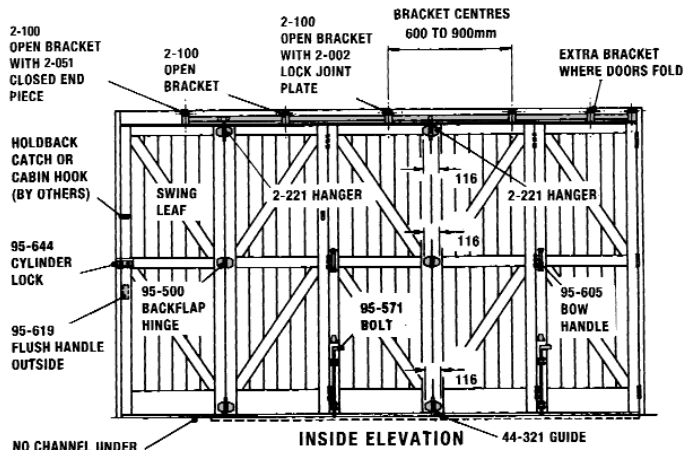
A TYPICAL BILL OF QUANTITIES

ITEM				
A	2-16	Track, 2 x 6.0m	3.6	LIN.M
B	2-100	Brackets, open, side wall	7	NO.
C	2-051	Closed end piece (pair)	1	NO.
D	2-002	Lockjoint plate	1	NO.
E		Bolts for brackets (by others)	7	NO.
F	2-217	End Hanger	1	NO.
G	2-221	Centre hanger, 2 wheel	1	NO.
H	95-500	Backflap hinge	1	NO.
J	95-520	Foldaside steel hinges pack	2	NO.
K	95-524	Foldaside steel hinges pack	2	NO.
L	44-317	End guide	1	NO.
M	44-321	Centre guide	1	NO.
N	44-1	Channel 2 x 1.8m	3.6	LIN.M
O	44-011	Channel shoe	1	NO.
P	44-010	Channel lugs pack	2	NO.
Q	95-570	Roller bolt	2	NO.
R	95-605	Bow handles	2	NO.
S	95-619	Flush handle	3	NO.
T	95-644	Cylinder lock	1	NO.





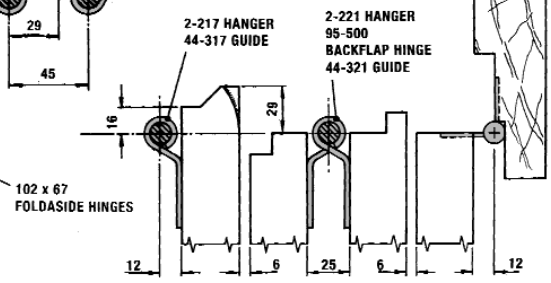
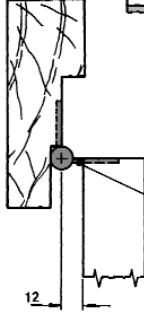
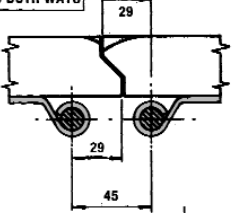
STANDARD TRACK LENGTHS				
1.8	2.1	2.4	3.0	METRES



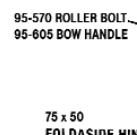
DOOR ARRANGEMENTS
 FROM 2 TO 8 LEAVES ONE WAY WITH OR WITHOUT SWING LEAF ON OPPOSITE JAMB
 FROM 2 TO 8 LEAVES BOTH WAYS



HANGERS, HINGES AND GUIDES MUST BE PLUMB



95-644 CYLINDER LOCK

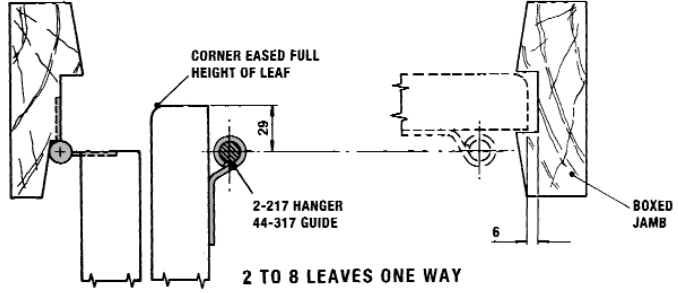


75 x 50 FOLDASIDE HINGES

NOTE: FOR 44 DOORS USE 89 x 60 FOLDASIDE HINGES

2 TO 8 LEAVES ONE WAY WITH SWING LEAF ON OPPOSITE JAMB

FLOOR CHANNEL MUST BE PLUMB WITH TOP TRACK



Foldaside 310 Sliding & Folding Door System

FOR TOP HUNG INWARD FOLDING DOORS

APPLICATION

For garages, factories, warehouses and industrial use etc.

RANGE

Track size	3-20	3-25
Maximum weight per door leaf	55kg (120lb)	60kg (130lb)
Maximum door height	3.3m (11ft)	3.6m (12ft)
Maximum opening width	Unlimited	Unlimited
Maximum door leaf width	900mm (3ft)	900mm (3ft)

Up to 8 leaves may be hinged together.
Consider door area in exposed positions.

DOOR CONSTRUCTION

Door thickness 44 to 57mm. Width of door leaves vary according to arrangements, refer to drawings for details. Swing leaves are best hinged to jambs. When hinged to folding suites reduce door leaf widths to 800mm. Always engage holdback catch before operating.

FIXING

Side fixing standard. Additional brackets required where doors stack when folded. All hangers and guides have vertical adjustment. Floor channel unnecessary under swing leaves.

HANGERS

All steel, ball bearing, lubricated for life.
Pressed steel backflaps for doors up to 50kg.
Malleable backflaps for doors up to 60kg.

TRACK

3-20 (2.0mm). 3-25 (2.5mm). Galvanised steel to BS EN 10142. Lengths 1.8m to 6.0m.

TRACK BRACKETS

Steel. See drawing and full range page 3.

INTERMEDIATE HINGES

95-500 or 95-501 Pressed steel backflaps.

FOLDASIDE BUTT HINGES

95-524 Steel, size 102 x 67mm.
95-530 Steel, size 100 x 100mm.

DOOR GUIDES

Pressed steel backflaps for doors up to 50kg.
Malleable backflaps for doors up to 60kg.

FLOOR CHANNEL

45-1 Galvanised Steel continuously lugged for concrete.
Lengths 1.8m to 3.0m.

FURNITURE

Full range of door furniture available.

FINISHES

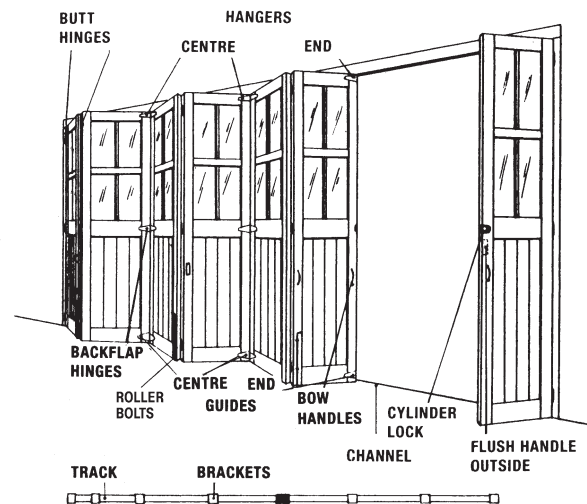
Top track galvanised, brackets and backflaps zinc plated.

EXAMPLE

Quantities for a door opening 5.4m wide x 3.3m high. Weight of each leaf 56kg.
Six leaves folding one way, seventh leaf hinged to opposite jamb.

A TYPICAL BILL OF QUANTITIES

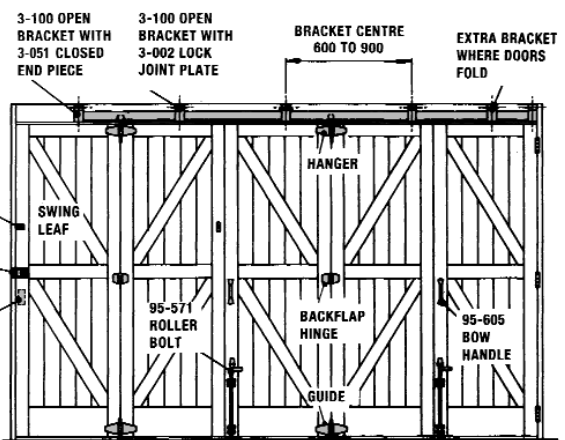
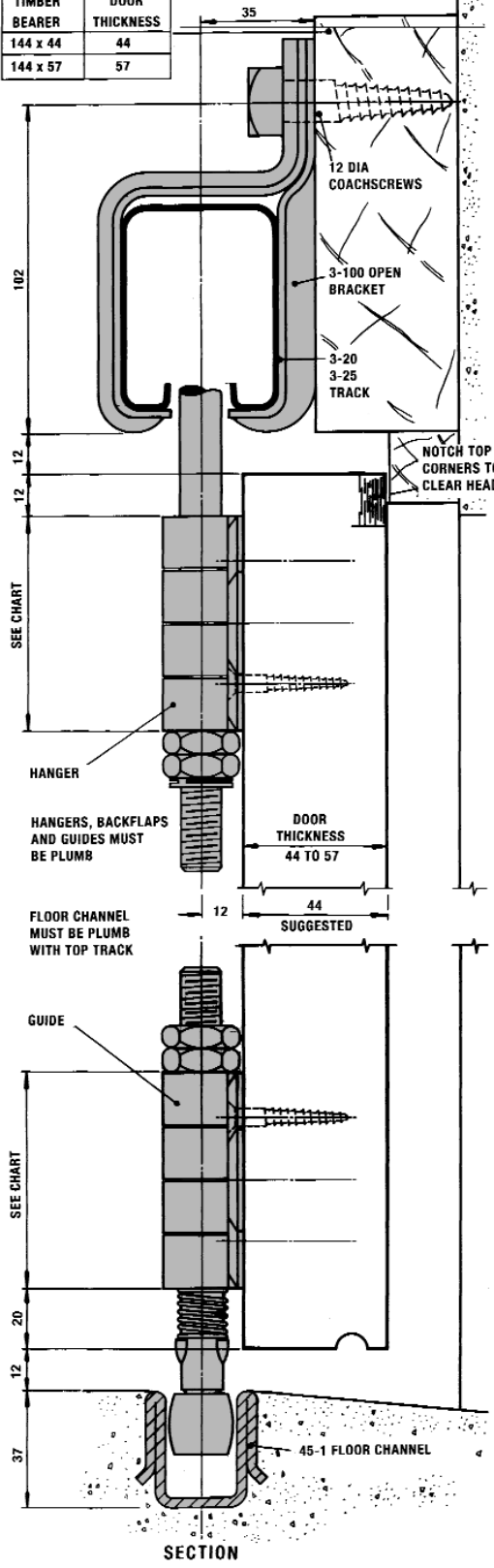
ITEM				
A	3-25	Track 2 x 2.4m	4.8	LIN.M
B	3-100	Brackets, open, side wall	8	NO.
C	3-051	Closed end piece	2	NO.
D	3-002	Lock joint plate	1	NO.
E		Bolts for brackets (by others)	8	NO.
F	3-218	End hanger	1	NO.
G	3-222	Centre hanger, 2 wheel	2	NO.
H	95-501	Backflap hinge	2	NO.
J	95-524	Foldaside steel hinges (pack)	3	NO.
K	95-530	Foldaside steel hinges (pack)	2	NO.
L*	45-318	End guide	1	NO.
M*	45-322	Centre guide	2	NO.
N	45-1	Channel 2 x 2.4m	4.8	LIN.M
O	45-011	Connecting shoe	1	NO.
P	95-571	Roller Bolt	3	NO.
Q	95-605	Bow handle	4	NO.
R	95-619	Flush handle	2	NO.
S	95-644	Cylinder lock	1	NO.



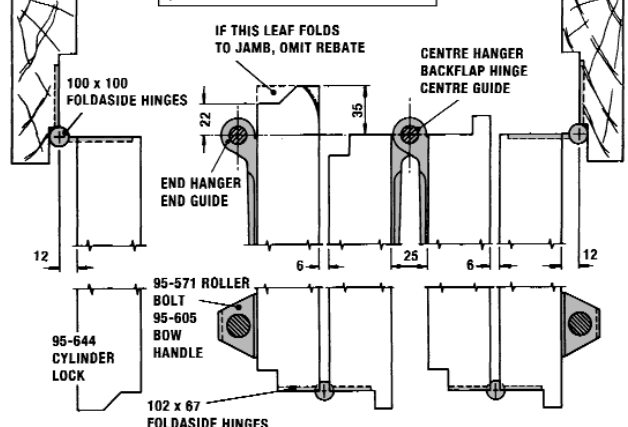
* If leaf weight is less than 45kg substitute 45-317 (End Guide) and 45-321 (Centre Guide)

TIMBER BEARER	DOOR THICKNESS
144 x 44	44
144 x 57	57

STANDARD TRACK LENGTHS				
1.8	2.1	2.4	3.0	METRES



DOOR ARRANGEMENTS
 FROM 2 TO 8 LEAVES ONE WAY WITH OR WITHOUT SWING LEAF ON OPPOSITE JAMB
 FROM 2 TO 8 LEAVES BOTH WAYS
 4, 6 OR 8 LEAVES 'FLOATING'



2, 4, 6 OR 8 LEAVES ONE WAY WITH SWING LEAF JAMB ON OPPOSITE JAMB

MAX WEIGHT	MAX HEIGHT	TRACK	END HANGER	2 WHEEL CENTRE HANGER	BACK FLAP HINGE	END GUIDE	CENTRE GUIDE
Up to 50kg	3.3m	3-20	3-217	3-221	95-500	45-317	45-321
			108 x 67 S	216 x 67 S	116 x 67 S	108 x 67 S	216 x 67 S
50 to 55kg	3.3m	3-20	3-218	3-222	95-501	45-318	45-322
55 to 60kg	3.6m	3-25	171 x 76 M	343 x 76 M	216 x 67 S	171 x 76 M	343 x 76 M

Ⓢ STEEL Ⓜ MALLEABLE
 CHART FOR CATALOGUE NUMBERS AND BACKFLAP DIMENSIONS



Foldaside 410 Sliding & Folding Door System

FOR TOP HUNG INWARD FOLDING DOORS

APPLICATION

Heavy industrial use. For garages, factories, warehouses etc

RANGE

Maximum weight per door leaf 70kg (150lb)
 Maximum door height 4.2m (14ft)
 Maximum opening width Unlimited
 Maximum door leaf width 900mm (3ft)
 Up to 6 leaves may be hinged together.
 Consider door area in exposed positions.

DOOR CONSTRUCTION

Door thickness 44 to 57mm. Width of door leaves vary according to arrangements; refer to drawings for details. Swing leaves are best hinged to jambs.

FIXING

Side fixing standard. Additional brackets required where doors stack when folded. All hangers and guides have vertical adjustment. Floor channel unnecessary under swing leaves.

HANGERS

All steel, ball bearing, lubricated for life.
 Malleable backflaps. 4-218 Two wheel end pattern.
 4-222 Two wheel centre pattern.

TRACK

4-30 (3.0mm) Galvanised steel to BS EN 10142.
 Lengths 1.8m to 3.0m.

TRACK BRACKETS

Steel. See drawing and full range page 3.

INTERMEDIATE HINGES

95-501 Pressed steel backflaps.

FOLDASIDE BUTT HINGES

95-530 Steel, size 100 x 100mm.

DOOR GUIDES

Malleable backflaps, brass roller. 45-318 End pattern.
 45-322 Centre pattern.

FLOOR CHANNEL

45-1 Galvanised Steel. Continuously lugged for concrete.
 Lengths 1.8m to 3.0m.

FINISHES

Top track galvanised, brackets and backflaps zinc plated.

FURNITURE

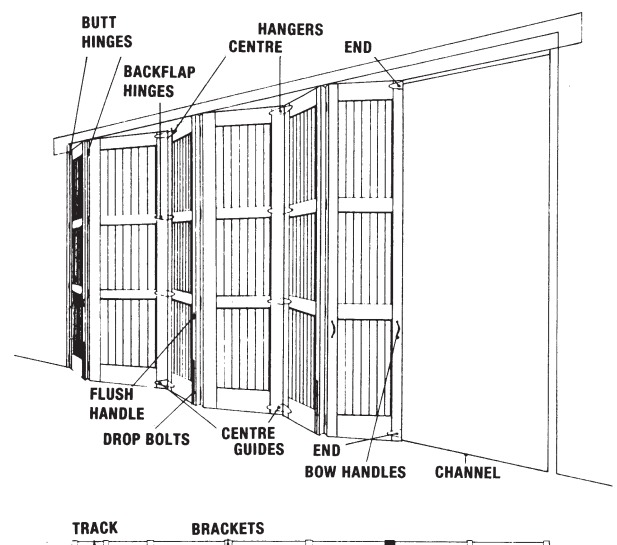
Full range of door furniture available.

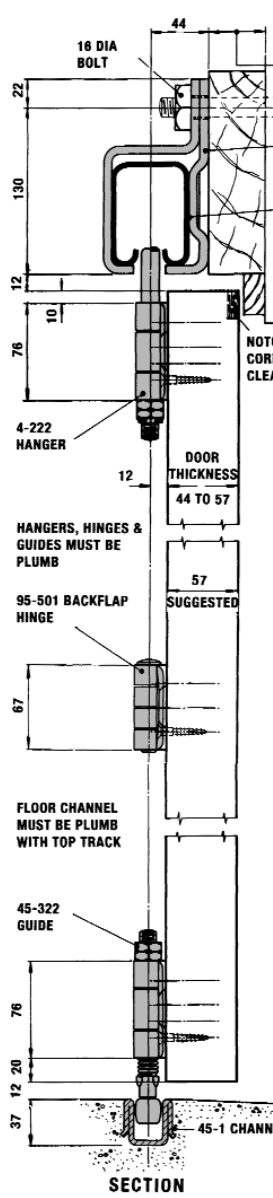
EXAMPLE

Quantities for a door opening 4.8m wide x 3.9m high.
 Weight of each leaf 65kg. Six leaves folding one way.

A TYPICAL BILL OF QUANTITIES

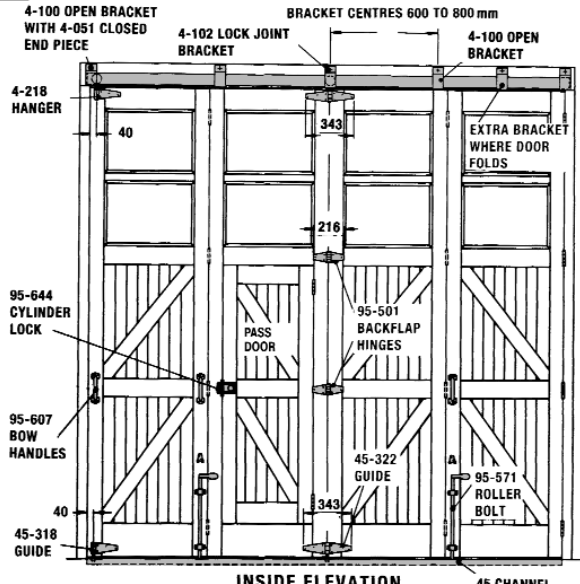
ITEM				
A	4-30	Track 1 x 3.0m, 1 x 1.8m	4.8	LIN.M
B	4-100	Brackets, open, side wall	8	NO.
C	4-051	Closed end piece	2	NO.
D	4-102	Bracket, lock-joint, side wall	1	NO.
E		Bolts for brackets (by others)	9	NO.
F	4-218	End hanger	1	NO.
G	4-222	Centre hanger, 2 wheel	2	NO.
H	95-501	Backflap hinge	4	NO.
J	95-524	Foldaside steel hinges (pack)	4	NO.
K	95-530	Foldaside steel hinges (pack)	1	NO.
L	45-318	End guide	1	NO.
M	45-322	Centre guide	2	NO.
N	45-1	Channel 1 x 3.0m, 1 x 1.8m	4.8	LIN.M
O	45-011	Connecting shoes	1	NO.
P	95-571	Roller bolt	3	NO.
Q	95-607	Bow handle	4	NO.
R	95-619	Flush handle	1	NO.



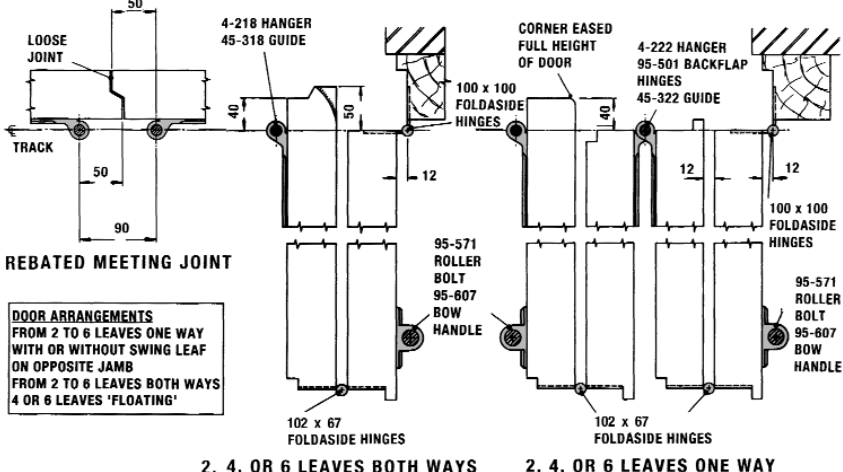


TIMBER BEARER	FINISHED DOOR THICKNESS
169 x 32	44
169 x 44	57

STANDARD TRACK LENGTHS			
1.8	2.1	2.4	3.0 METRES



INSIDE ELEVATION
A PASS DOOR MAY BE INCORPORATED IF REQUIRED

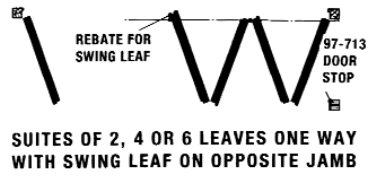


DOOR ARRANGEMENTS
FROM 2 TO 6 LEAVES ONE WAY WITH OR WITHOUT SWING LEAF ON OPPOSITE JAMB
FROM 2 TO 6 LEAVES BOTH WAYS 4 OR 6 LEAVES 'FLOATING'

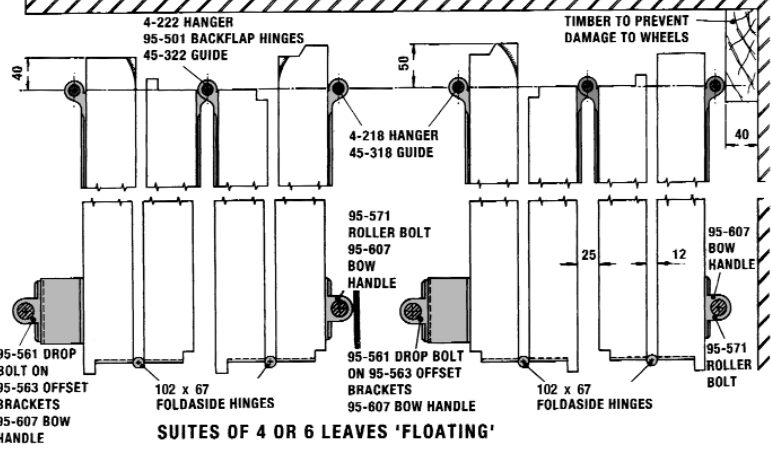
2, 4, OR 6 LEAVES BOTH WAYS 2, 4, OR 6 LEAVES ONE WAY



SUITES OF 2, 4, OR 6 LEAVES EACH WAY



SUITES OF 2, 4 OR 6 LEAVES ONE WAY WITH SWING LEAF ON OPPOSITE JAMB



SUITES OF 4 OR 6 LEAVES 'FLOATING'

Cornaway 210 Sliding Door System

FOR DOORS SLIDING FROM THE OPENING TO SIDE WALL OR WALLS

APPLICATION

Top hung angle sliding doors for residential garages and light industrial use etc.

RANGE

Maximum weight per door leaf 36kg (80lb)
 Maximum door height 2.4m (8ft)
 Maximum opening width Unlimited
 Maximum door leaf width 1m (3ft 3ins)
 Up to 5 leaves may be hinged together.
 Consider door area in exposed positions.

DOOR CONSTRUCTION

Door thickness 38 to 44mm. All door leaves equal width. If swing leaves hinged to sliding doors reduce door widths to 700mm. If depth of return wall exceeds radius of curve by 75mm or more, a swing leaf is not essential.

FIXING

Side fixing standard. It is essential that top tracks and floor channels are plumb. Notch top corners of doors where shown, to clear stop at head. Hangers and guides have vertical adjustments.

HANGERS

All steel, ball bearing, lubricated for life. Pressed steel backflaps, 2-217 End pattern. 2-221 Centre pattern.

TRACK

2-16 (1.6mm) Galvanised steel to BS EN 10142. Lengths 1.8m to 6.0m. Curves radius 600mm.

TRACK BRACKETS

Steel. See drawing and full range page 3.

INTERMEDIATE HINGES

95-500 Pressed steel backflaps.

DOOR GUIDES

Pressed steel backflaps, brass roller. 44-317 End pattern. 44-321 Centre pattern.

FLOOR CHANNEL

44-1 Galvanised steel, lugs available for concrete with connecting shoes for joints. Lengths 1.8m to 4.0m. Curves radius 600mm.

DOOR STOPS

97-711 Steel with rubber buffers, fixed mid-height of doors.

FURNITURE

Full range of door furniture available.

FINISHES

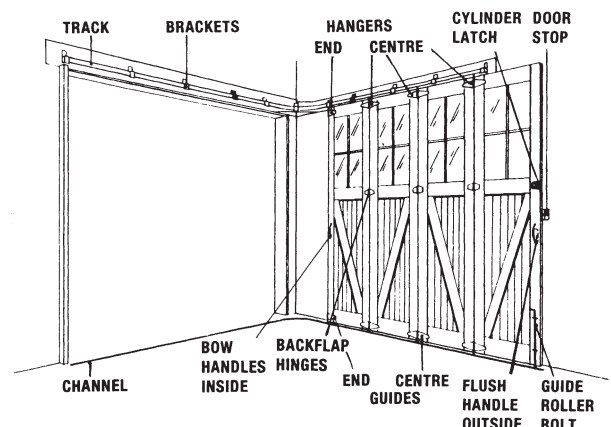
Top track galvanised, brackets and backflaps zinc plated.

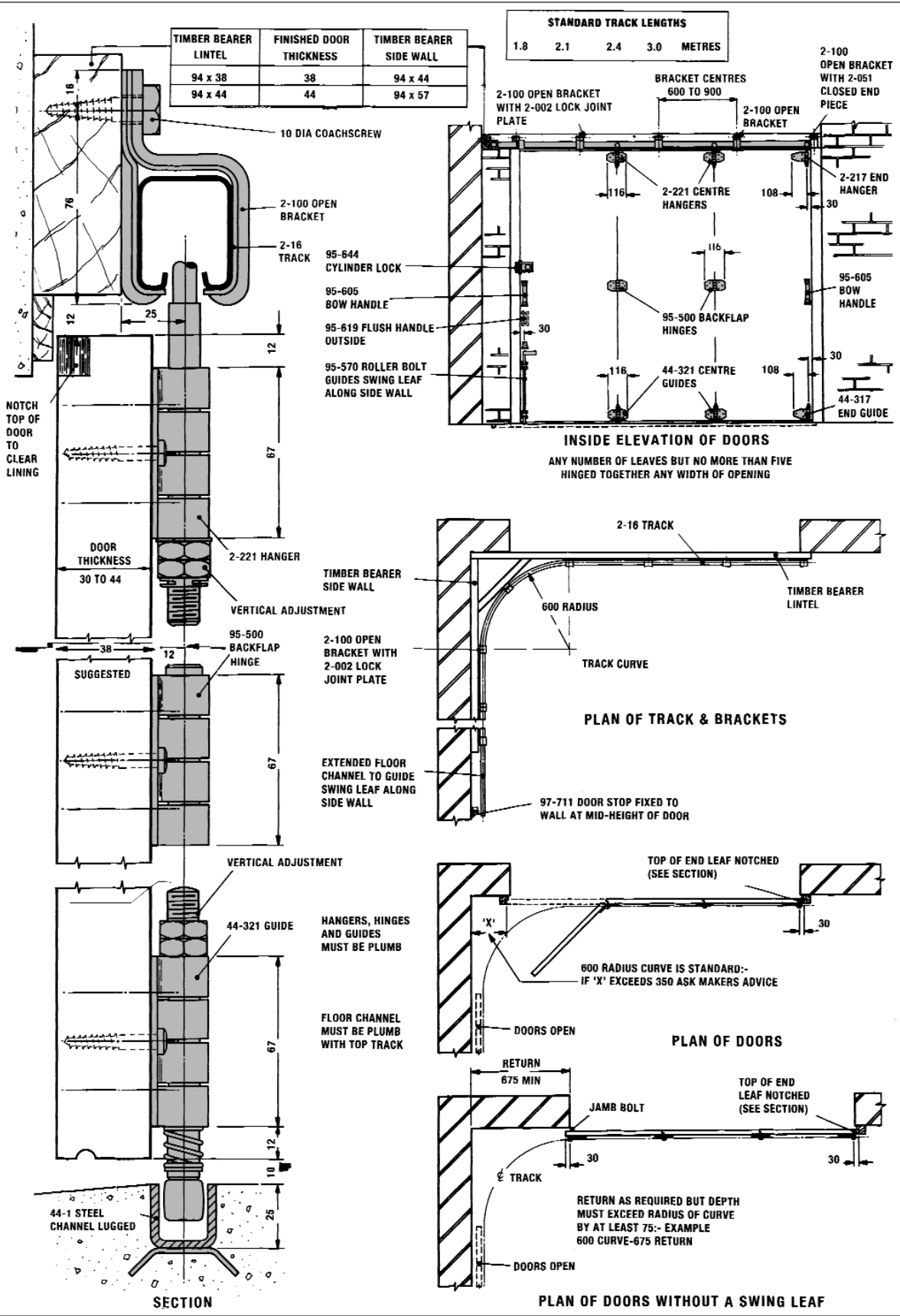
EXAMPLE

Quantities for a door opening 2.4m wide x 2.1 m high. 250mm return. Weight of each leaf 30kg. Four leaves sliding one way.

A TYPICAL BILL OF QUANTITIES

ITEM				
A	2-16	Track 1 x 1.8m 1 x 2.1m	3.9	LIN.M
B	2-16-600	Track curve 600mm Rad.	1	NO.
C	2-100	Bracket, open, side wall	8	NO.
D	2-051	Closed end pieces (pair)	1	NO.
E	2-002	Lock joint plates	2	NO.
F		Bolts for brackets (by others)	8	NO.
G	2-217	End hanger	1	NO.
H	2-221	Centre hanger	3	NO.
J	95-500	Backflap hinge	3	NO.
K	44-317	End guide	1	NO.
L	44-321	Centre guide	3	NO.
M	44-1	Channel 1 x 2.1m 1 x 2.4m	4.5	LIN.M
N	44-1-600	Channel curve 600mm Rad	1	NO.
O	44-011	Connecting shoes	2	NO.
P	44-010	Channel lugs (pack)	3	NO.
Q	95-570	Guide roller bolt	1	NO.
R	95-605	Bow handle	2	NO.
S	95-619	Flush handle	1	NO.
T	97-711	Door stop	1	NO.
U	95-644	Cylinder latch	1	NO.





Cornaway 310 Sliding Door System

FOR DOORS SLIDING FROM THE OPENING TO THE SIDE WALL OR WALLS

APPLICATION

Top hung angle sliding doors for domestic and industrial use. For garages, factories, etc.

RANGE

Track size	3-20	3-25
Maximum weight per door leaf	50kg (110lb)	60kg (130lb)
Maximum door height	3.3m (11ft)	3.6m (12ft)
Maximum opening width	Unlimited	Unlimited
Maximum door leaf width	1m (3ft 3ins)	1m (3ft 3ins)

Up to 5 leaves may be hinged together. Consider door area in exposed positions.

DOOR CONSTRUCTION

Door thickness 44 to 57mm. All door leaves equal width. If swing leaves hinged to sliding doors reduced door widths by 100mm, height by 300mm and weight by 10kg. If depth of return wall exceeds radius of curve by 75mm or more, a swing leaf is not essential.

FIXING

Side fixing standard. It is essential that top tracks and floor channels are plumb. Notch top corners of door where shown to clear stop at head. Hangers and guides have vertical adjustment.

HANGERS

All steel ball bearing, lubricated for life, malleable backflaps. 3-218 End pattern. 3-222 Centre pattern.

TRACK

3-20 (2.0mm) 3-25 (2.5mm) Galvanised steel to BS EN 10142. Lengths 1.8m to 6.0m. Curves radius 600mm.

TRACK BRACKETS

Steel. See drawing and full range page 3.

INTERMEDIATE HINGES

95-501 Pressed steel plated backflaps.

DOOR GUIDES

Malleable backflaps, brass roller. 45-318 End pattern. 45-322 Centre pattern

FLOOR CHANNEL

45-1 Galvanised Steel, continuously lugged for concrete. Lengths 1.8m to 3.0m. Curves radius 600mm.

DOOR STOPS

97-711 Steel, fixed mid-height of doors.

FURNITURE

Full range of door furniture available.

FINISHES

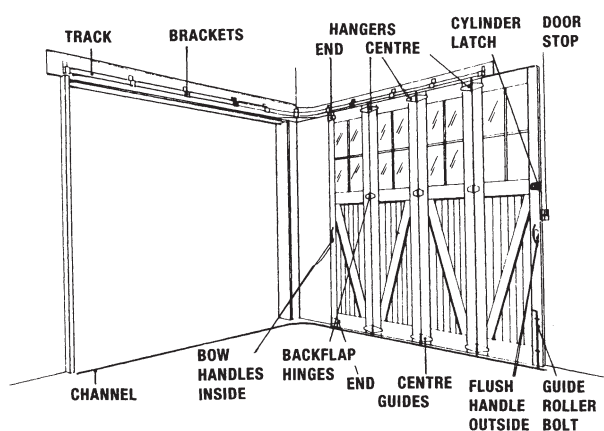
Top track galvanised, brackets and backflaps zinc plated.

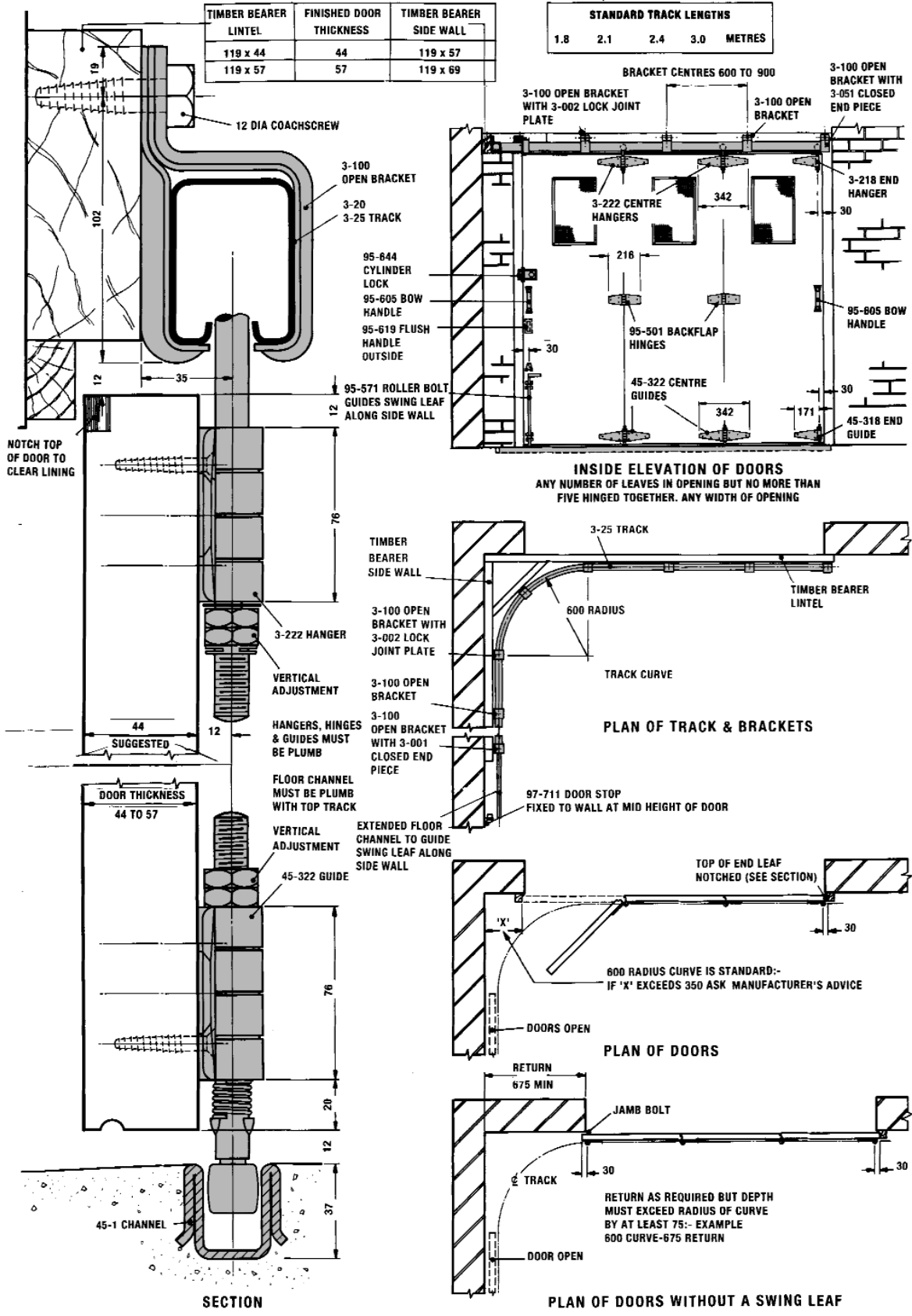
EXAMPLE

Quantities for a door opening 3.4m wide x 2.7 high. 225mm return. Weight of each leaf 45kg. Four leaves sliding one way.

A TYPICAL BILL OF QUANTITIES

ITEM				
A	3-20	Track 2 x 3.0m	6.0	LIN.M
B	3-20-600	Track curve 600mm Rad.	1	NO.
C	3-100	Bracket, open, side wall	11	NO.
D	3-051	Closed end pieces	2	NO.
E	3-002	Lock joint plates	2	NO.
F		Bolts for brackets (by others)	11	NO.
G	3-218	End hanger	1	NO.
H	3-222	Centre hanger	3	NO.
J	95-501	Backflap Hinge	3	NO.
K	45-318	End guide	1	NO.
L	45-322	Centre guide	3	NO.
M	45-1	Channel 1 x 3.0m 2 x 1.8m	6.6	LIN.M
N	45-1-600	Channel curve 600mm Rad	1	NO.
O	45-011	Connecting shoes	3	NO.
P	95-571	Guide roller bolt	1	NO.
Q	95-605	Bow handle	2	NO.
R	95-619	Flush handle	1	NO.
S	97-711	Door stop	1	NO.
T	95-644	Cylinder latch	1	NO





Hillaldam Coburn has a history of commitment to quality and technical developments. Products are always manufactured to the appropriate British Standards and the company was one of the first in the industry to have operating procedures approved under BS EN ISO 9001.

Constant testing ensures that quality is maintained and a programme of product improvement is regularly reviewed and updated.

The following range of literature is available on request:

SLIDING DOOR GEAR

- External Foldaside and Cornaway Systems
- Façade
- Fire Rated Straightaway 320
- Flat Track
- Glassmaster Base 150
- Hideaway Protek Complete Range
- Interior Sliding and Folding Solutions
- Internal Foldaside and Centafold Systems
- Stainless Steel Systems
- Straightaway 250
- Straightaway Door Gear (Internal and External)
- The Buyers Guide

OTHER COBURN PRODUCTS

- Dictator Range of products
- Door Furniture Data Sheet
- Folding Fabric Partitions
- Movable Walls
- Rediframe® Steel Door Frame

ALSO AVAILABLE

- Hillaldam Coburn Corporate Brochure
- Quote Form



[twitter @SalesCoburn](#)



facebook

[Facebook.co.uk/Hillaldam Coburn](https://www.facebook.com/HillaldamCoburn)



Certificate No. 14679

The products designed and supplied by Hillaldam Coburn Ltd are covered by a Quality Assurance system in accordance with BS EN ISO 9001:2008

The company reserves the right from time to time to make such alteration in design and manufacture as it considers necessary without notice. Drawings, specifications, illustrations, tables and other details are not binding in detail. Conditions of sale are as those published on the Company's tender forms.

HILLALDAM COBURN LIMITED

UNIT 16, MERTON INDUSTRIAL PARK, LEE ROAD, LONDON, SW19 3HX, UK

Tel: +44 (0) 20 8545 6680 Fax: +44 (0) 20 8545 6720 Email: sales@hillaldam.co.uk Web: www.coburn.co.uk